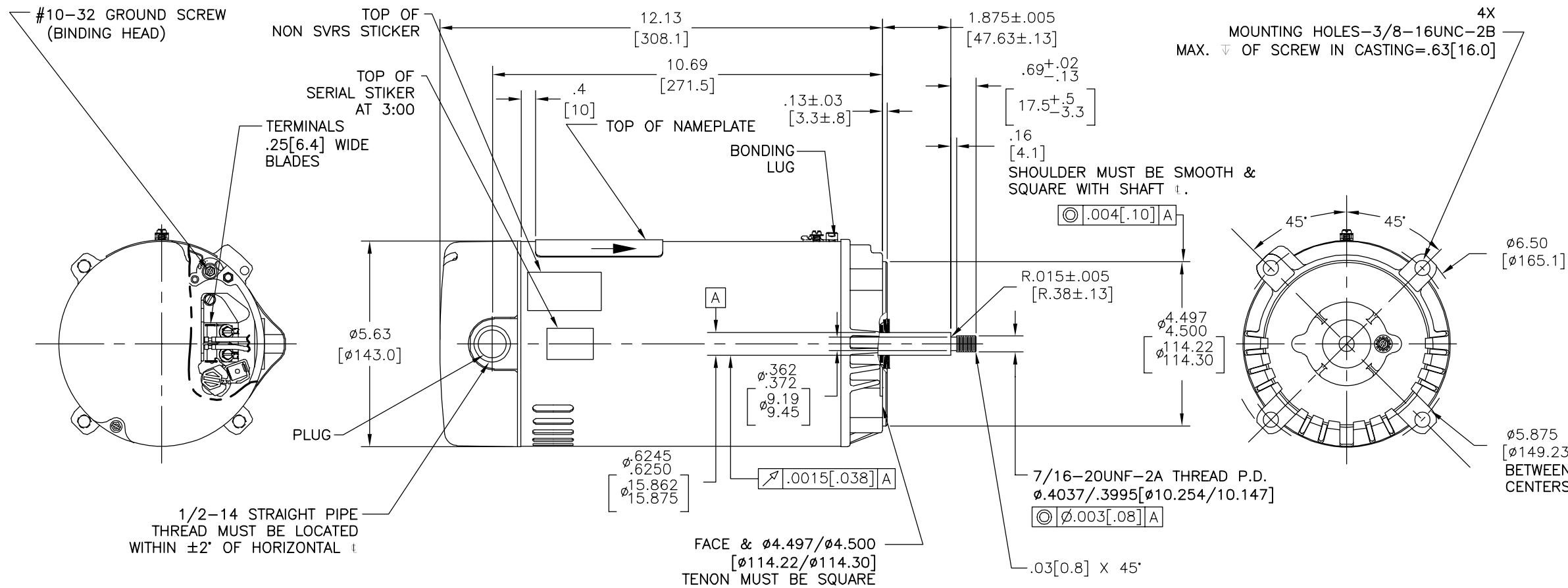


| REV | ECO | REV BY | DATE | APPD | DATE |
|-----|---------|------------|------------|----------|------------|
| F | 0025584 | J.AGUILERA | 04-26-2012 | R.RASCON | 04-26-2012 |



| NAMEPLATE DATA | EXTERNAL CONNECTION DIAGRAM | NOTES |
|---|---|---|
| MODEL: C48L2N134C1 CUST PN: UST1152 HP: 1 1/2 SF: 1.0 ROT: CCWPE RPM: 3450 TYPE: UAC CODE: H FORM: FRAME: 56J VOLTS: 115/230 AMPS: MAX AMPS: 18.6/9.3 SF AMPS: - PH: 1 HZ: 60 INS: B AMB: 50 DUTY: CONT ENCLOSURE: ODP THERM. PROT. CET40ABM | <p>GRD GREEN (GROUND) HIGH VOLTAGE SHOWN. ROTATE DIAL CCW TO 115 FOR LOW VOLTAGE. USE COPPER CONDUCTORS ONLY. INSTALL MOTOR WITH VENTS DOWN. ACCEPTABLE FOR FIELD WIRING</p> | 1. FINISH PAINT TO BE SATIN BLACK. 2. .44[11.1] WRENCH FLATS ON SHAFT-FOR ACCESS TO THIS WRENCH FLAT REMOVE END COVER. 3. STAINLESS STEEL SHAFT EXT. 4. LIMITS ON AMPLITUDE OF VIBRATION MEASURED AT BEARING HOUSING = .001[.03]. 5. DUAL VOLTAGE MOTERS ARE TO BE CONNECTED FOR HIGHER VOLTAGE. QUICK VOLTAGE CHANGE PLUG INCLUDED ON THE TERMINAL BOARD. 6. SUPPORT PAD TO BE PACKED WITH EACH MOTOR |

| | | | | | |
|-------------------|-----------------|---|--|--|---|
| PERFORMANCE CURVE | APPROVED SAMPLE | GEOMETRIC CHARACTERISTICS & SYMBOLS □ FLATNESS - STRAIGHTNESS ∟ ANGULARITY ⊥ PERPENDICULARITY (SQUARENESS) // PARALLELISM ○ ROUNDNESS (CIRCULARITY) ∅ CYLINDRICITY △ PROFILE OF ANY SURFACE ∩ PROFILE OF ANY LINE ↑ RUNOUT ⊕ TRUE POSITION ⊙ CONCENTRICITY = SYMMETRY | UNLESS OTHERWISE SPECIFIED DIM. TOLERANCES ARE AS FOLLOWS: INCH X XX XXX XXXX ±.1 ±.02 ±.005 ±.0005 mm ±0.5 ±0.13 ±0.013 ANG. ±.50 DEG REMOVE BURRS & BREAK SHARP EDGES: INCH .003-.015 mm 0.1-0.4 CORNER FILLETS TO: INCH .020 mm 0.5 MACHINE SURFACES: INCH 125 mm 3.2 | DR BY: JACK.Z 10-27-2009 APPD: KG 10-27-2009 THIRD ANGLE PROJECTION EDS DATE 11-11-2011 FORMAT REV G CONFIDENTIAL: THIS DRAWING AND ITS INFORMATION ARE THE EXCLUSIVE AND CONFIDENTIAL PROPERTY OF REGAL-BELOIT CORPORATION AND ARE NOT TO BE DISCLOSED, DUPLICATED, DISTRIBUTED OR OTHERWISE USED WITHOUT THE WRITTEN CONSENT OF REGAL-BELOIT CORPORATION. -ALL RIGHTS RESERVED. | REGAL-BELOIT CORPORATION DESCRIPTION: MODEL-PFHP-48FR OUTLINE SIZE: C DWG NO: UST1152 SCALE: NONE SHEET: 1 |
| C48L2W36 | CSA | | ASME Y14.5M 1994 METRIC DIMS. SHOWN IN [BRACKETS] | | |

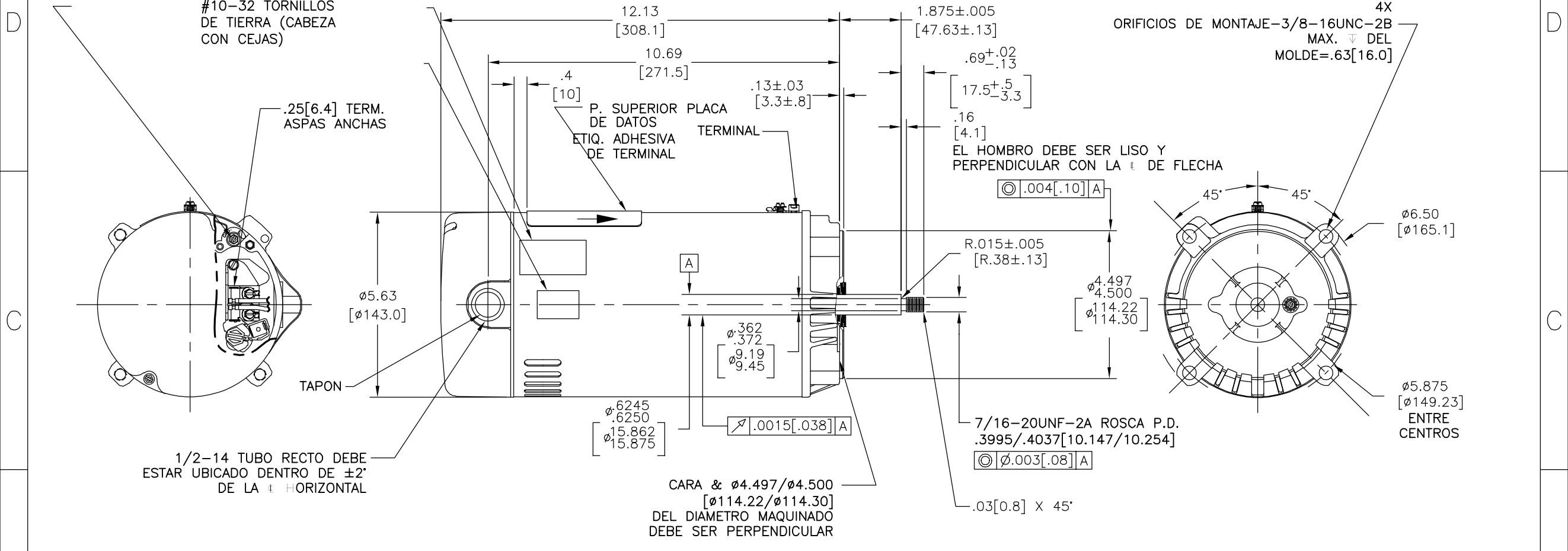
4

3

2

1

| | | | | | |
|-----------|---------|---------------|------------|---------------|------------|
| REVISION: | ECO | REVISADO POR: | FECHA: | APROBADO POR: | FECHA: |
| F | 0025584 | J.AGUILERA | 04-26-2012 | R.RASCON | 04-26-2012 |



| NAMEPLATE DATA | EXTERNAL CONNECTION DIAGRAM | NOTES |
|---|---|--|
| MODEL: C48L2N134C1 CUST PN: UST1152 HP: 1 1/2 SF: 1.0 ROT: CCWPE RPM: 3450 TYPE: UAC CODE: H FORM: FRAME: 56J VOLTS: 115/230 AMPS: MAX AMPS: 18.6/9.3 SF AMPS: - PH: 1 HZ: 60 INS: B AMB: 50 DUTY: CONT ENCLOSURE: ODP THERM. PROT. CET40ABM | <p>GRD GREEN (GROUND) HIGH VOLTAGE SHOWN. ROTATE DIAL CCW TO 115 FOR LOW VOLTAGE. USE COPPER CONDUCTORS ONLY. INSTALL MOTOR WITH VENTS DOWN. ACCEPTABLE FOR FIELD WIRING</p> | 1. PINTURA DE ACABADO ES EL SATIN NEGRO. 2. PLANOS DE .44[11.1] PARA LLAVE EN LA PARA TENER ACCESO A ESTE PLANO DE LLAVE RETIRAR CUBIERTA. 3. EXTENSION DE FELCHA DE ACERO INOXIDABLE. 4. LIMITES DE AMPLITUD DE MEDICION DE VIBRACION EN LA CAVIDAD DEL BALERO = .001[.03]. 5. MOTORES DE DOBLE VOLTAJE SE VAN A CONECTAR PARA ALTO VOLTAJE. CLAVIJA PARA CAMBIO RAPIDO DE VOLTAJE INCLUIDA EN LA TABLILLA DE CONEXIONES. 6. ATENUADOR DE SOPORTE ESTA EMPACADO CON CADA MOTOR. 7. ENSAMBLE DE REFERENCIA DEL MOTOR: 617158-008 |

| | | | | | | |
|-------------------|-----------------------|--|---|-----------------------------|-----------------------|---------------------------|
| PERFORMANCE CURVE | APPROVED SAMPLE | CARACTERISTICAS DE GEOMETRIA Y SIMBOLOS | A MENOS QUE SE ESPECIFIQUE DE OTRA MANERA, LAS TOLERANCIAS DE LAS DIMS; SON LAS SIGUIENTES: | DIBUJADO POR: JACK.Z | 10-27-2009 | |
| C48L2W36 | CSA | □ PLANICIDAD - RECTITUD < ANGULARIDAD ⊥ PERPENDICULARIDAD (A ESQUADRA) // PARALELISMO ○ REDONDEZ (CIRCULARIDAD) ∅ CILINDRICIDAD △ PERFIL DE CUALQUIER SUPERFICIE ∩ PERFIL DE CUALQUIER LINEA † VARIACION ⊕ POSICION REAL ⊙ CONCENTRICIDAD = SIMETRIA | PULG ±.1 ±.02 ±.005 ±.0005 mm ±0.5 ±0.13 ±0.013 ANG. ±.50 GRADOS ELIMINAR REBABAS Y ORILLAS FILOSAS DEL BORDE. PULG .003-.015 mm 0.1-0.4 FILETEAR ESQUINA: PULG .020 mm 0.5 MAQUINAR SUPERFICIES PULG 125 mm 3.2 | APROBADO POR: KG | 10-27-2009 | |
| UL COMPONENT | CSA | ASME Y14.5M 1994 | DIMS METRICAS MOSTRADAS [PARENTESIS] | TERCER ANGULO DE PROYECCION | FECHA EDS: 11-11-2011 | TAMAÑO: C |
| FILE# | CCN# | FILE# | GUIDE# | | REV. FORMATO: G | NUMERO DE DIBUJO: UST1152 |
| E46412 | PRGY2 | LR43341 | 4211-02 | | | ESCALA: NONE |
| CUSTOMER | DISTRIBUTION SERVICES | | | | | HOJA: 1 |

4

3

2

1

