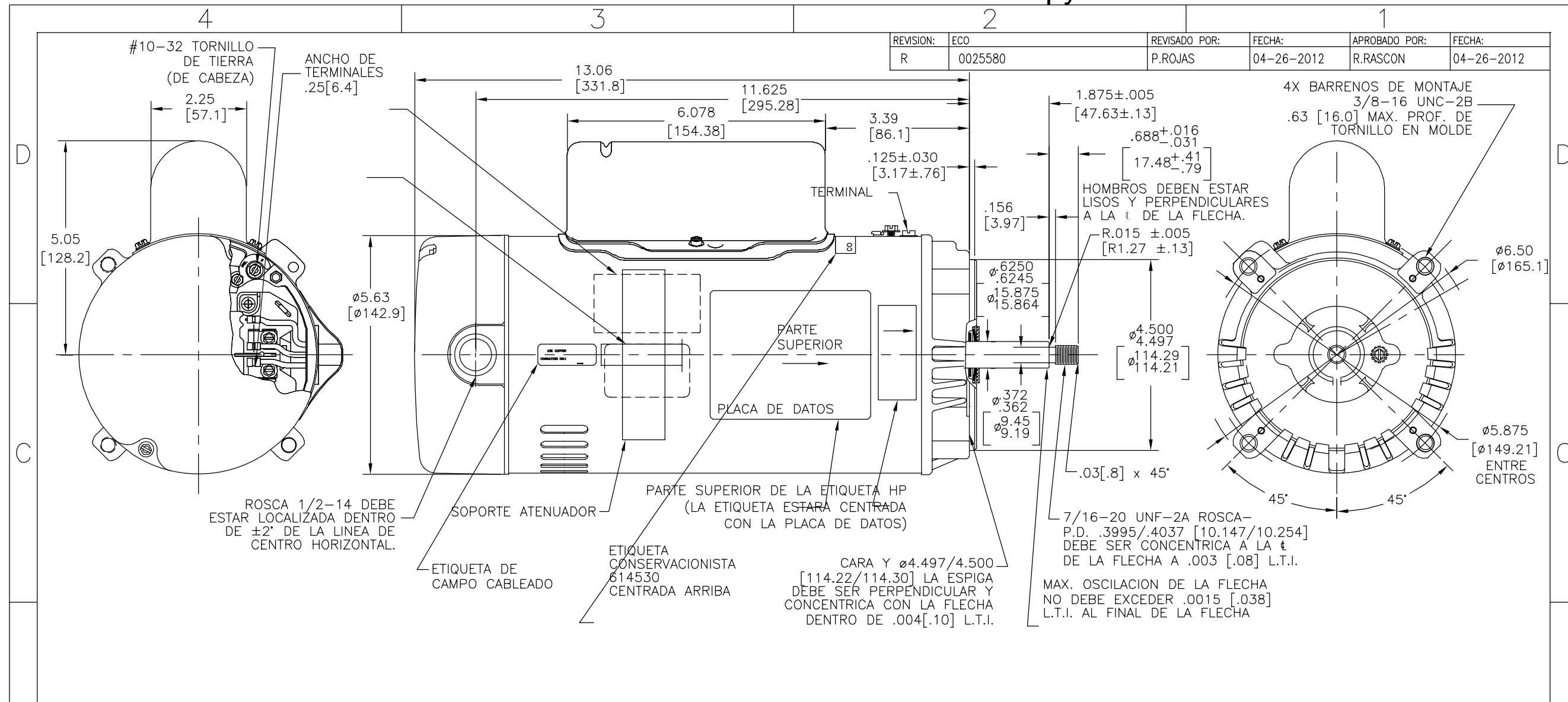


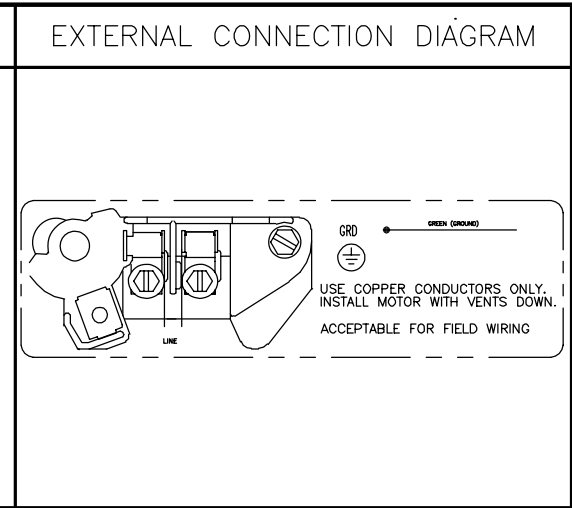
NAMEPLATE DATA	EXTERNAL CONNECTION DIAGRAM	NOTES
MODEL: K48N2N106C1 CUST PN: ST1202 HP: 2 SF: 1.32 ROT: CCWPE RPM: 3450 TYPE: UAK CODE: G FORM: FRAME: 56J VOLTS: 208-230 AMPS: MAX AMPS: 12.6-11.4 SF AMPS: - PH: 1 HZ: 60 INS: B AMB: 50°C DUTY: CONT ENCLOSURE: ODP THERMALLY PROTECTED	<p>USE COPPER CONDUCTORS ONLY. INSTALL MOTOR WITH VENTS DOWN. ACCEPTABLE FOR FIELD WIRING</p>	<ol style="list-style-type: none"> FINISH PAINT TO BE SATIN BLACK. .44[11.1] WRENCH FLATS ON SHAFT-FOR ACCESS TO THIS WRENCH FLAT REMOVE END COVER. STAINLESS STEEL SHAFT EXT. LIMITS ON AMPLITUDE OF VIBRATION MEASURED AT BEARING HOUSING = .001[.03]. MOTOR ASSEMBLY REFERENCE:629535-002

<table border="1"> <tr> <th>PERFORMANCE CURVE</th> <th>APPROVED SAMPLE</th> </tr> <tr> <td>K48M2W18</td> <td></td> </tr> <tr> <th>UL COMPONENT</th> <th>CSA</th> </tr> <tr> <td>FILE#</td> <td>CCN#</td> <td>FILE#</td> <td>GUIDE#</td> </tr> <tr> <td>E25022</td> <td>XEWR2</td> <td>LR43341</td> <td>4211-01</td> </tr> <tr> <th>CUSTOMER</th> <td colspan="3">DISTRIBUTION SERVICES</td> </tr> </table>	PERFORMANCE CURVE	APPROVED SAMPLE	K48M2W18		UL COMPONENT	CSA	FILE#	CCN#	FILE#	GUIDE#	E25022	XEWR2	LR43341	4211-01	CUSTOMER	DISTRIBUTION SERVICES			<p>GEOMETRIC CHARACTERISTICS & SYMBOLS</p> <ul style="list-style-type: none"> □ FLATNESS - STRAIGHTNESS ∠ ANGULARITY ⊥ PERPENDICULARITY (SQUARENESS) // PARALLELISM ○ ROUNDNESS (CIRCULARITY) ⊘ CYLINDRICITY △ PROFILE OF ANY SURFACE ∩ PROFILE OF ANY LINE ↑ RUNOUT ⊕ TRUE POSITION ◎ CONCENTRICITY ≡ SYMMETRY <p>ASME Y14.5M 1994</p>	<p>UNLESS OTHERWISE SPECIFIED DIM. TOLERANCES ARE AS FOLLOWS:</p> <p>INCH X XX XXX XXXX $\pm .1 \pm .02 \pm .005 \pm .0005$ mm $\pm 0.5 \pm 0.13 \pm 0.013$ ANG. $\pm .50$ DEG REMOVE BURRS & BREAK SHARP EDGES: INCH .003-.015 mm 0.1-0.4 CORNER FILLETS TO: INCH .020 mm 0.5 MACHINE SURFACES: INCH 125 mm 3.2</p> <p>METRIC DIMS. SHOWN IN [BRACKETS]</p>	<p>DR BY: BL 07-15-2010</p> <p>APPD: MY 07-15-2010</p> <p>THIRD ANGLE PROJECTION</p> <p>EDS DATE 11-11-2011 FORMAT REV G</p> <p>CONFIDENTIAL: THIS DRAWING AND ITS INFORMATION ARE THE EXCLUSIVE AND CONFIDENTIAL PROPERTY OF REGAL-BELOIT CORPORATION AND ARE NOT TO BE DISCLOSED, DUPLICATED, DISTRIBUTED OR OTHERWISE USED WITHOUT THE WRITTEN CONSENT OF REGAL-BELOIT CORPORATION. -ALL RIGHTS RESERVED.</p>	<p>REGAL-BELOIT CORPORATION</p> <p>DESCRIPTION: MODEL-PFHP-48FR OUTLINE</p> <p>SIZE: C DWG NO: ST1202</p> <p>SCALE: NONE SHEET: 1</p>
PERFORMANCE CURVE	APPROVED SAMPLE																					
K48M2W18																						
UL COMPONENT	CSA																					
FILE#	CCN#	FILE#	GUIDE#																			
E25022	XEWR2	LR43341	4211-01																			
CUSTOMER	DISTRIBUTION SERVICES																					



REVISION:	ECO	REVISADO POR:	FECHA:	APROBADO POR:	FECHA:
R	0025580	P.ROJAS	04-26-2012	R.RASCON	04-26-2012

NAMEPLATE DATA	
MODEL: K48N2N106C1	
CUST PN: ST1202	
HP: 2	SF: 1.32
ROT: CCWPE	
RPM: 3450	
TYPE: UAK	CODE: G
FORM:	FRAME: 56J
VOLTS: 208-230	
AMPS:	
MAX AMPS: 12.6-11.4	
SF AMPS: -	
PH: 1	HZ: 60
INS: B	AMB: 50°C
DUTY: CONT	
ENCLOSURE: ODP	
THERMALLY PROTECTED	



- | NOTES |
|---|
| 1. PINTURA PARA ACABADO SERA NEGRO SATINADO. |
| 2. .44[11.1] LLAVE PLANA EN FLECHA- PARA TENER ACCESO A ESTA LLAVE PLANA REMOVER LA TAPA. |
| 3. EXTENSION DE FLECHA DE ACERO INOXIDABLE. |
| 4. LIMITS ON AMPLITUDE OF VIBRATION MEASURED AT BEARING HOUSING = .001[.03]. |
| 5. CONNECTED FOR HIGH VOLTAGE QUICK VOLTAGE CHANGE PLUG INCLUDED ON THE TERMINAL BOARD. |

PERFORMANCE CURVE	APPROVED SAMPLE		
K48M2W18			
UL COMPONENT	CSA		
FILE#	CCN#	FILE#	GUIDE#
E25022	XEWR2	LR43341	4211-01
CUSTOMER	DISTRIBUTION SERVICES		

CARACTERISTICAS DE GEOMETRIA Y SIMBOLOS

- ∠ PLANICIDAD
- RECTITUD
- ∠ ANGULARIDAD
- ⊥ PERPENDICULARIDAD (A ESCUADRA)
- // PARALELISMO
- REDONDEZ (CIRCULARIDAD)
- ∅ CILINDRICIDAD
- △ PERFIL DE CUALQUIER SUPERFICIE
- ∧ PERFIL DE CUALQUIER LINEA
- ↑ VARIACION
- ⊕ POSICION REAL
- ◎ CONCENTRICIDAD
- = SIMETRIA

ASME Y14.5M 1994

A MENOS QUE SE ESPECIFIQUE DE OTRA MANERA, LAS TOLERANCIAS DE LAS DIMS; SON LAS SIGUIENTES:

PULG ±.1 ±.02 ±.005 ±.0005
 mm ±0.5 ±0.13 ±0.013

ANG. ±50 GRADOS

ELIMINAR REBABAS Y ORILLAS FILOSAS DEL BORDE.

PULG .003-.015 mm 0.1-0.4

FILETEAR ESQUINA: PULG .020 mm 0.5

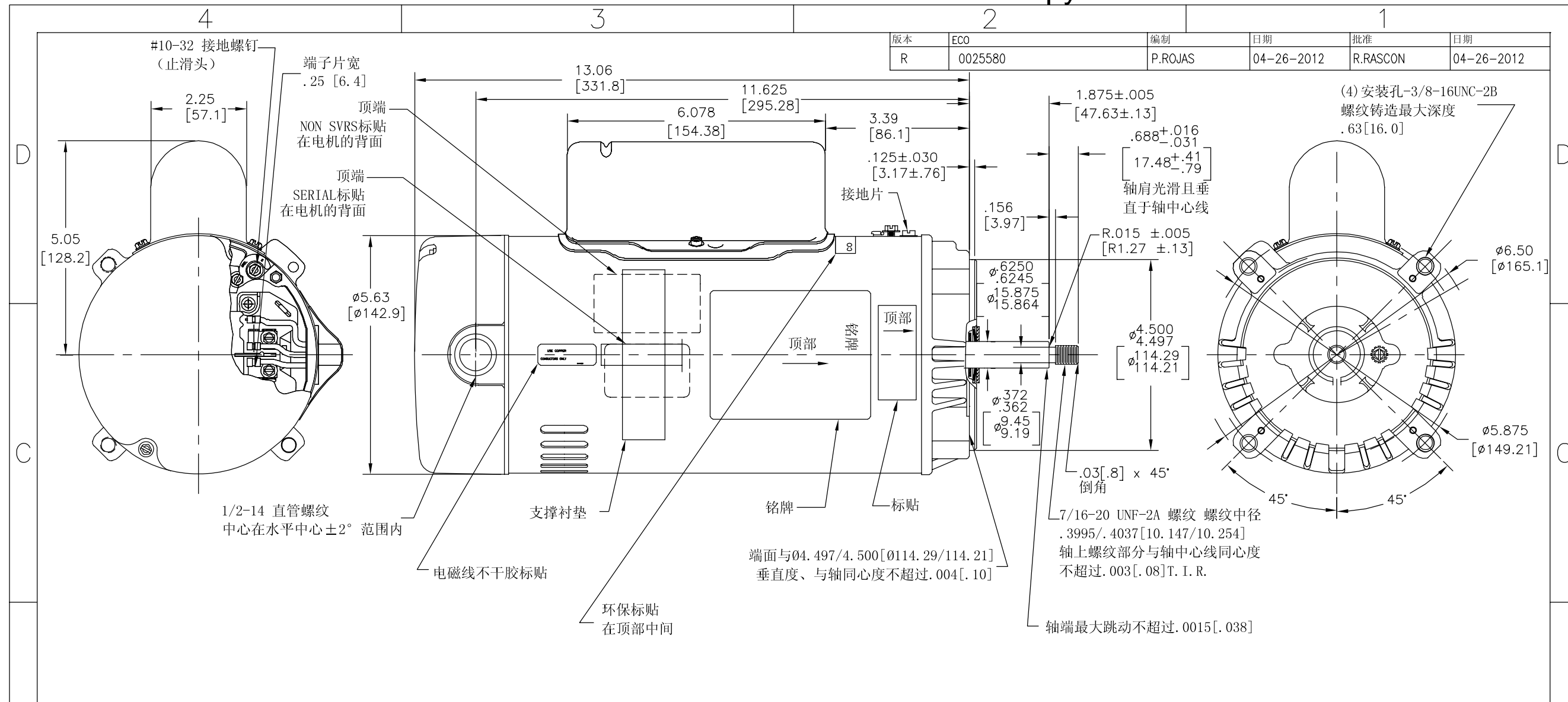
MAQUINAR SUPERFICIES

PULG 125 mm 3.2

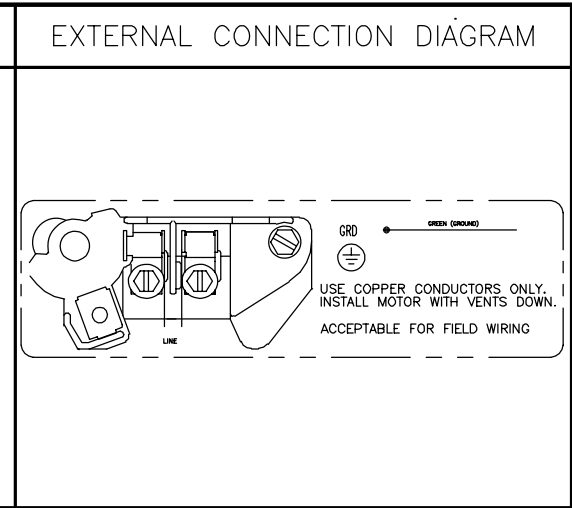
DIMS METRICAS MOSTRADAS [PARENTESIS]

DIBUJADO POR:	BL	07-15-2010
APROBADO POR:	MY	07-15-2010
TERCER ANGULO DE PROYECCION		FECHA EDS: 11-11-2011
		REV. FORMATO: G
CONFIDENCIAL: ESTE DIBUJO Y SU INFORMACION SON PROPIEDAD DE USO EXCLUSIVO Y CONFIDENCIAL DE REGAL-BELOIT CORPORATION. Y NO DEBERAN SER REVELADOS, DUPLICADOS, DISTRIBUIDOS O USARSE DE OTRA MANERA SIN EL CONSENTIMIENTO ESCRITO DE REGAL-BELOIT CORPORATION. -TODOS LOS DERECHOS RESERVADOS.		

DESCRIPCION:	
MODEL-PFHP-48FR OUTLINE	
TAMAÑO: C	NUMERO DE DIBUJO: ST1202
ESCALA: NONE	HOJA: 1



NAMEPLATE DATA	
MODEL: K48N2N106C1	
CUST PN: ST1202	
HP: 2	SF: 1.32
ROT: CCWPE	
RPM: 3450	
TYPE: UAK	CODE: G
FORM:	FRAME: 56J
VOLTS: 208-230	
AMPS:	
MAX AMPS: 12.6-11.4	
SF AMPS: -	
PH: 1	HZ: 60
INS: B	AMB: 50°C
DUTY: CONT	
ENCLOSURE: ODP	
THERMALLY PROTECTED	



- NOTES
1. 表面为黑色喷漆。
 2. 移去端盖可见.44[11.1]的扁身。
 3. 不锈钢轴伸。
 4. 轴承腔振幅不超过.001[.03]
 5. 电机组件参考: 629535-002

PERFORMANCE CURVE	APPROVED SAMPLE		
K48M2W18			
UL COMPONENT	CSA		
FILE#	CCN#	FILE#	GUIDE#
E25022	XEWR2	LR43341	4211-01
CUSTOMER	DISTRIBUTION SERVICES		

形位公差	除另有注明
□ 平面度	尺寸公差如下:
— 直线度	英寸 X ±.1 ±.02 ±.005 ±.0005
∠ 倾斜度	毫米 ±0.5 ±0.13 ±0.013
⊥ 垂直度	角度 ±.50度
// 平行度	清理毛刺和尖棱
○ 圆度	英寸 .003-.015 毫米 0.1-0.4
⊘ 圆柱度	内圆角
△ 面轮廓度	英寸 .020 毫米 0.5
∩ 线轮廓度	表面粗糙度
∧ 圆跳动	英制 125 米制 3.2
⊕ 位置度	米制尺寸显示在 []
◎ 同轴度	
≡ 对称度	

ASME Y14.5M 1994

绘图: BL	07-15-2010
批准: MY	07-15-2010
第三角投影	图纸格式发布日期 11-11-2011 图纸格式版本 G
机密: 本图纸及相关信息所有权归REGAL-BELOIT CORPORATION. 未经REGAL-BELOIT CORPORATION书面授权, 不得泄露、复制、传播或作其他用途。一版权所有	

名称 MODEL-PFHP-48FR OUTLINE	
图幅 C	图号 ST1202
比例 NONE	页号 1