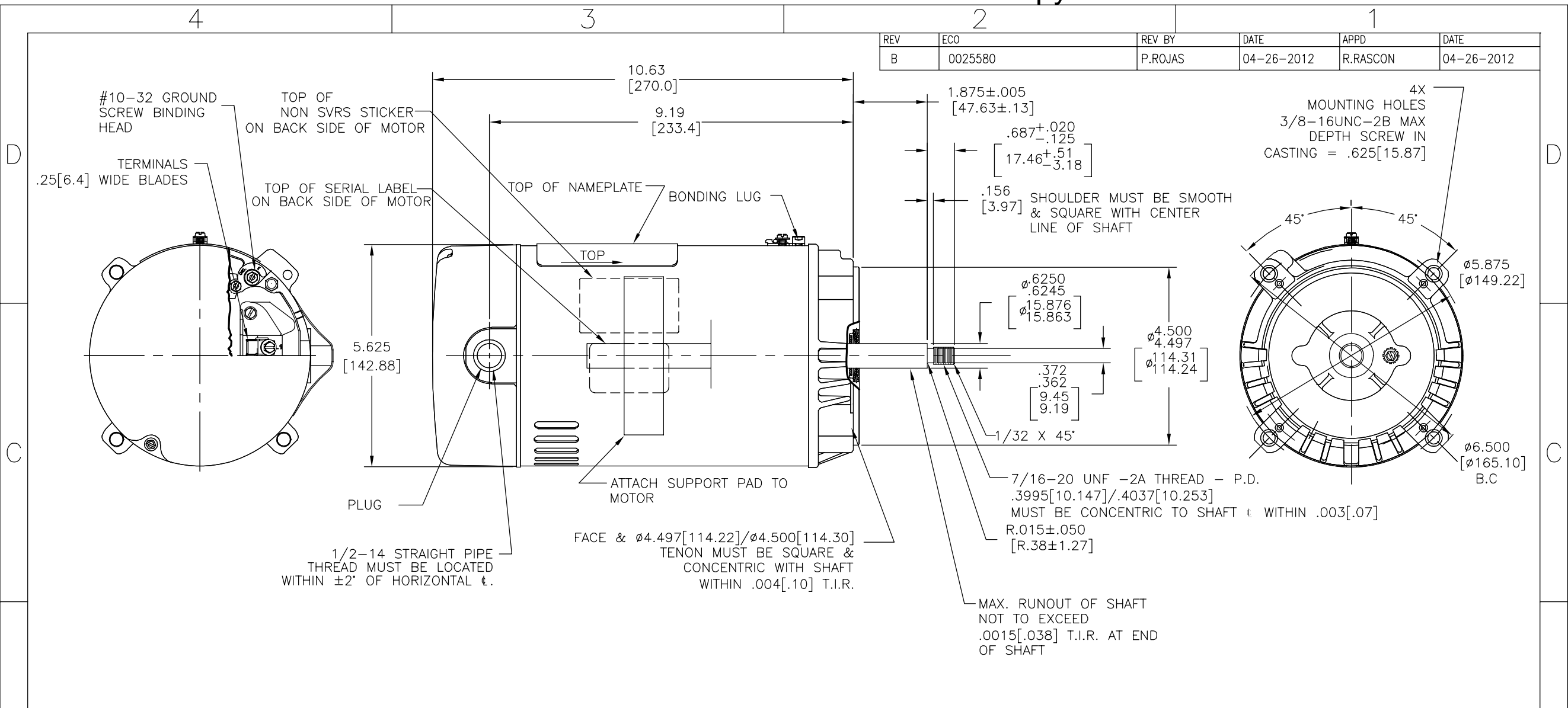


REV	ECO	REV BY	DATE	APPD	DATE
B	0025580	P.ROJAS	04-26-2012	R.RASCON	04-26-2012



NAMEPLATE DATA	EXTERNAL CONNECTION DIAGRAM	NOTES
MODEL: C48J2N131C2C CUST PN: ST1052 HP: 1/2 SF: 1.6 ROT: CCWPE RPM: 3450 TYPE: UAC CODE: L FORM: FRAME: 56J VOLTS: 115/230 AMPS: -- MAX AMPS: 11.0/5.5 SF AMPS: -- PH: 1 HZ: 60 INS: B AMB: 50 DUTY: CONT ENCLOSURE: ODP THERMALLY PROTECTED	<p>HIGH VOLTAGE SHOWN, ROTATE DIAL CCW TO 115 FOR LOW VOLTAGE. USE COPPER CONDUCTORS ONLY. INSTALL MOTOR WITH VENTS DOWN. ACCEPTABLE FOR FIELD WIRING</p>	NOTES: (1) FINISH PAINT TO BE SATIN BLACK (2) 7/16" WRENCH FLATS ON SHAFT- FOR ACCESS TO THIS WRENCH FLAT REMOVE END COVER. (3) STAINLESS STEEL SHAFT EXT. (4) LIMITS ON AMPLITUDE OF VIBRATION MEASURED AT BEARING HOUSING = .001[.02] (5) DUAL VOLTAGE MOTORS ARE TO BE CONNECTED FOR HIGHER VOLTAGE QUICK VOLTAGE CHANGE PLUG INCLUDED ON THE TERMINAL BOARD

PERFORMANCE CURVE	APPROVED SAMPLE	GEOMETRIC CHARACTERISTICS & SYMBOLS	UNLESS OTHERWISE SPECIFIED DIM. TOLERANCES ARE AS FOLLOWS:	DR BY: FX	10-11-2010
C48J2W34		□ FLATNESS - STRAIGHTNESS ∠ ANGULARITY ⊥ PERPENDICULARITY (SQUARENESS) ∥ PARALLELISM ○ ROUNDNESS (CIRCULARITY) ∅ CYLINDRICITY △ PROFILE OF ANY SURFACE ∩ PROFILE OF ANY LINE ↑ RUNOUT ⊕ TRUE POSITION ⊙ CONCENTRICITY = SYMMETRY	INCH ±.1 ±.02 ±.005 ±.0005 mm ±0.5 ±0.13 ±0.013 ANG. ±.50 DEG REMOVE BURRS & BREAK SHARP EDGES: INCH .003-.015 mm 0.1-0.4 CORNER FILLETS TO: INCH .020 mm 0.5 MACHINE SURFACES: INCH 125 mm 3.2	APPD: TZ	10-11-2010
UL COMPONENT	CSA	ASME Y14.5M 1994	METRIC DIMS. SHOWN IN [BRACKETS]	THIRD ANGLE PROJECTION	EDS DATE 11-11-2011
FILE#	CCN#	FILE#	GUIDE#		FORMAT REV G
E25022	XEWR2	LR43341	4211-01	CONFIDENTIAL: THIS DRAWING AND ITS INFORMATION ARE THE EXCLUSIVE AND CONFIDENTIAL PROPERTY OF REGAL-BELOIT CORPORATION AND ARE NOT TO BE DISCLOSED, DUPLICATED, DISTRIBUTED OR OTHERWISE USED WITHOUT THE WRITTEN CONSENT OF REGAL-BELOIT CORPORATION. -ALL RIGHTS RESERVED.	
CUSTOMER	DISTRIBUTION SERVICES				

REGAL-BELOIT CORPORATION	
DESCRIPTION	
MODEL-PFHP-48FR	
OUTLINE	
SIZE	DWG NO
C	ST1052
SCALE	SHEET
NONE	1

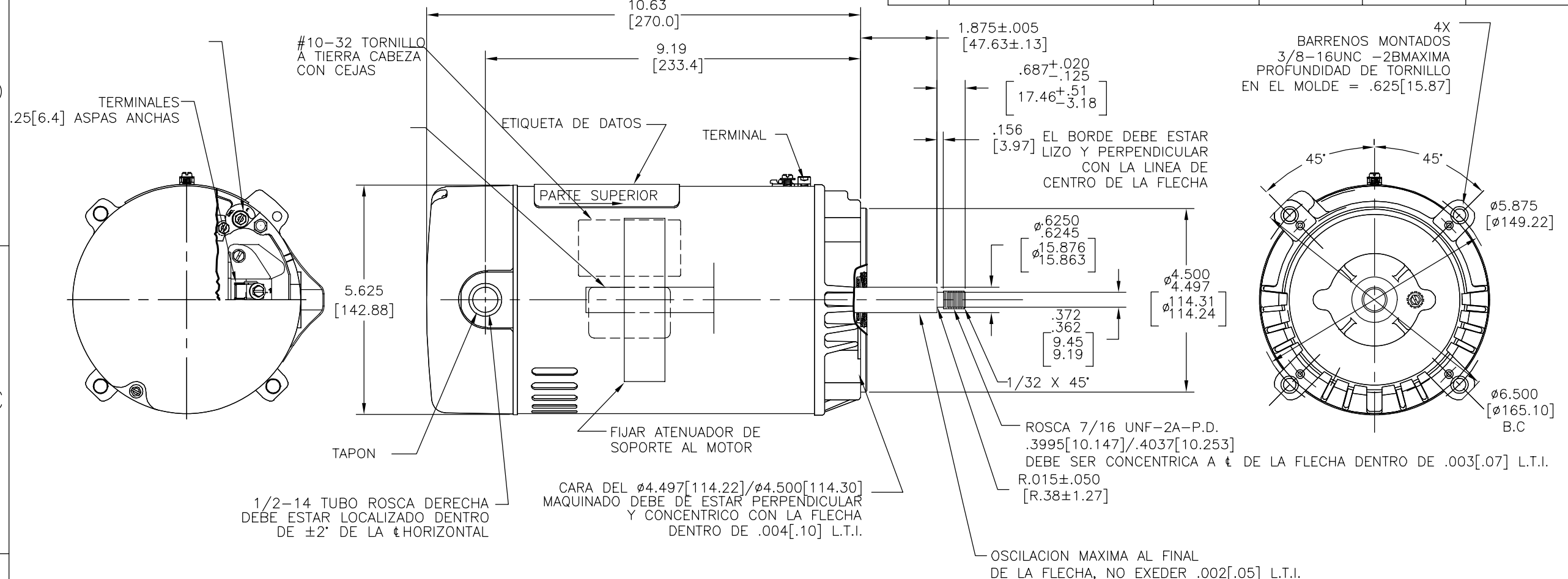
4

3

2

1

REVISION: ECO	REVISADO POR: P.ROJAS	FECHA: 04-26-2012	APROBADO POR: R.RASCON	FECHA: 04-26-2012
B	0025580			



NAMEPLATE DATA	EXTERNAL CONNECTION DIAGRAM	NOTES
MODEL: C48J2N131C2C CUST PN: ST1052 HP: 1/2 SF: 1.6 ROT: CCWPE RPM: 3450 TYPE: UAC CODE: L FORM: FRAME: 56J VOLTS: 115/230 AMPS: -- MAX AMPS: 11.0/5.5 SF AMPS: -- PH: 1 HZ: 60 INS: B AMB: 50 DUTY: CONT ENCLOSURE: ODP THERMALLY PROTECTED	<p>NEUTRAL LINE</p> <p>GRD GREEN (GROUND)</p> <p>HIGH VOLTAGE SHOWN, ROTATE DIAL CCW TO 115 FOR LOW VOLTAGE.</p> <p>USE COPPER CONDUCTORS ONLY. INSTALL MOTOR WITH VENTS DOWN.</p> <p>ACCEPTABLE FOR FIELD WIRING</p>	(1) ACABADO DE PINTURA NEGRO SATINADO (2) LLAVE PLANA 7/16" PARA FLECHA PARA EL ACCESO DE ESTA LLAVE PLANA REMOVER LA CUBIERTA (3) FLECHA DE ACERO INOXIDABLE (4) LIMITE DE LA AMPLITUD DE LA VIBRACION MEDIDA EN LA CAVIDAD DEL BALERO = .001[.02] (5) MOTORES DE DOBLE VOLTAJE SE VAN A CONECTAR PARA EL VOLTAJE MAS ALTO. TERMINAL PARA CAMBIO RAPIDO DE VOLTAJE INCLUIDA EN LA TABLILLA DE CONEXIONES.

PERFORMANCE CURVE	APPROVED SAMPLE
C48J2W34	
UL COMPONENT	CSA
FILE#	CCN#
E25022	XEWR2
FILE#	GUIDE#
LR43341	4211-01
CUSTOMER	DISTRIBUTION SERVICES

CARACTERISTICAS DE GEOMETRIA Y SIMBOLOS □ PLANICIDAD — RECTITUD < ANGULARIDAD ⊥ PERPENDICULARIDAD (A ESCUADRA) // PARALELISMO ○ REDONDEZ (CIRCULARIDAD) ∅ CILINDRICIDAD △ PERFIL DE CUALQUIER SUPERFICIE ∩ PERFIL DE CUALQUIER LINEA ↑ VARIACION ⊕ POSICION REAL ⊙ CONCENTRICIDAD = SIMETRIA ASME Y14.5M 1994	A MENOS QUE SE ESPECIFIQUE DE OTRA MANERA, LAS TOLERANCIAS DE LAS DIMS; SON LAS SIGUIENTES: PULG ±.1 ±.02 ±.005 ±.0005 mm ±0.5 ±0.13 ±0.013 ANG. ±50 GRADOS ELIMINAR REBABAS Y ORILLAS FILOSAS DEL BORDE. PULG .003-.015 mm 0.1-0.4 FILETEAR ESQUINA: PULG .020 mm 0.5 MAQUINAR SUPERFICIES PULG 125 mm .32 DIMS METRICAS MOSTRADAS [PARENTESIS]
---	---

DIBUJADO POR: FX	10-11-2010
APROBADO POR: TZ	10-11-2010
TERCER ANGULO DE PROYECCION	FECHA EDS: 11-11-2011 REV. FORMATO: G
CONFIDENCIAL: ESTE DIBUJO Y SU INFORMACION SON PROPIEDAD DE USO EXCLUSIVO Y CONFIDENCIAL DE REGAL-BELOIT CORPORATION. Y NO DEBERAN SER REVELADOS, DUPLICADOS, DISTRIBUIDOS O USARSE DE OTRA MANERA SIN EL CONSENTIMIENTO ESCRITO DE REGAL-BELOIT CORPORATION. -TODOS LOS DERECHOS RESERVADOS.	

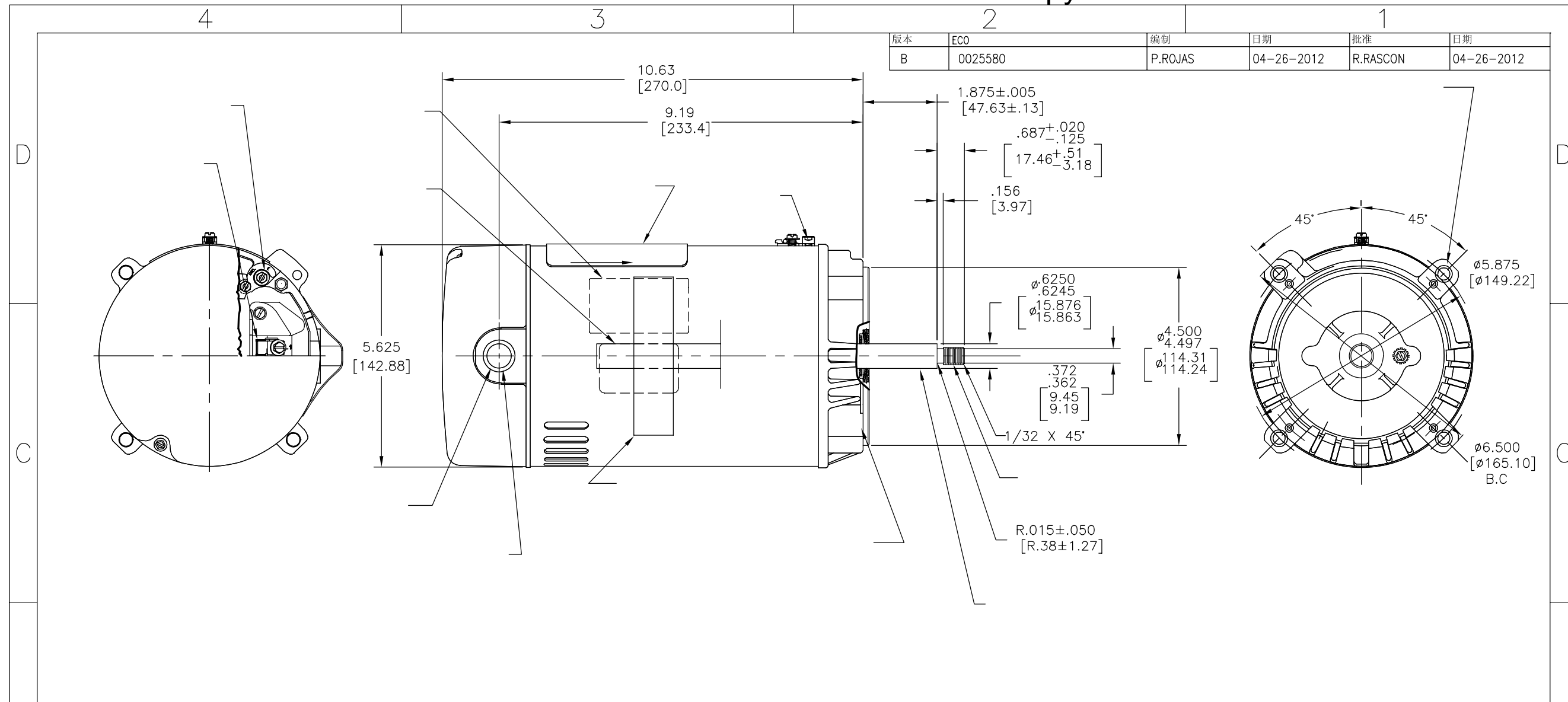
DESCRIPCION: MODEL-PFHP-48FR OUTLINE	
TAMAÑO: C	NUMERO DE DIBUJO: ST1052
ESCALA: NONE	HOJA: 1

4

3

2

1



版本	ECO	编制	日期	批准	日期
B	0025580	P.ROJAS	04-26-2012	R.RASCON	04-26-2012

NAMEPLATE DATA	EXTERNAL CONNECTION DIAGRAM	NOTES
MODEL: C48J2N131C2C CUST PN: ST1052 HP: 1/2 SF: 1.6 ROT: CCWPE RPM: 3450 TYPE: UAC CODE: L FORM: FRAME: 56J VOLTS: 115/230 AMPS: -- MAX AMPS: 11.0/5.5 SF AMPS: -- PH: 1 HZ: 60 INS: B AMB: 50 DUTY: CONT ENCLOSURE: ODP THERMALLY PROTECTED		

PERFORMANCE CURVE	APPROVED SAMPLE		
C48J2W34			
UL COMPONENT	CSA		
FILE#	CCN#	FILE#	GUIDE#
E25022	XEWR2	LR43341	4211-01
CUSTOMER	DISTRIBUTION SERVICES		

形位公差  
 □ 平面度  
 — 直线度  
 < 倾斜度  
 ⊥ 垂直度  
 // 平行度  
 ○ 圆度  
 ⊙ 圆柱度  
 △ 面轮廓度  
 ∩ 线轮廓度  
 / 圆跳动  
 ⊕ 位置度  
 ⊗ 同轴度  
 ≡ 对称度

除另有注明  
 尺寸公差如下:  
 英寸 X XX XXX XXXX  
 毫米 ±0.1 ±0.02 ±0.005 ±.0005  
 毫米 ±0.5 ±0.13 ±0.013  
 角度 ±.50 度  
 清理毛刺和尖棱  
 英寸 .003-.015 毫米 0.1-0.4  
 内圆角  
 英寸 .020 毫米 0.5  
 表面粗糙度  
 英制 125 米制 3.2

绘图:	FX	10-11-2010
批准:	TZ	10-11-2010
第三角投影		图纸格式发布日期 11-11-2011 图纸格式版本 G
机密: 本图纸及相关信息所有权归REGAL-BELOIT CORPORATION. 未经REGAL-BELOIT CORPORATION书面授权, 不得泄露、复制、传播或作其他用途。一版权所有		

名称	MODEL-PFHP-48FR OUTLINE
图幅	C
图号	ST1052
比例	NONE
页号	1