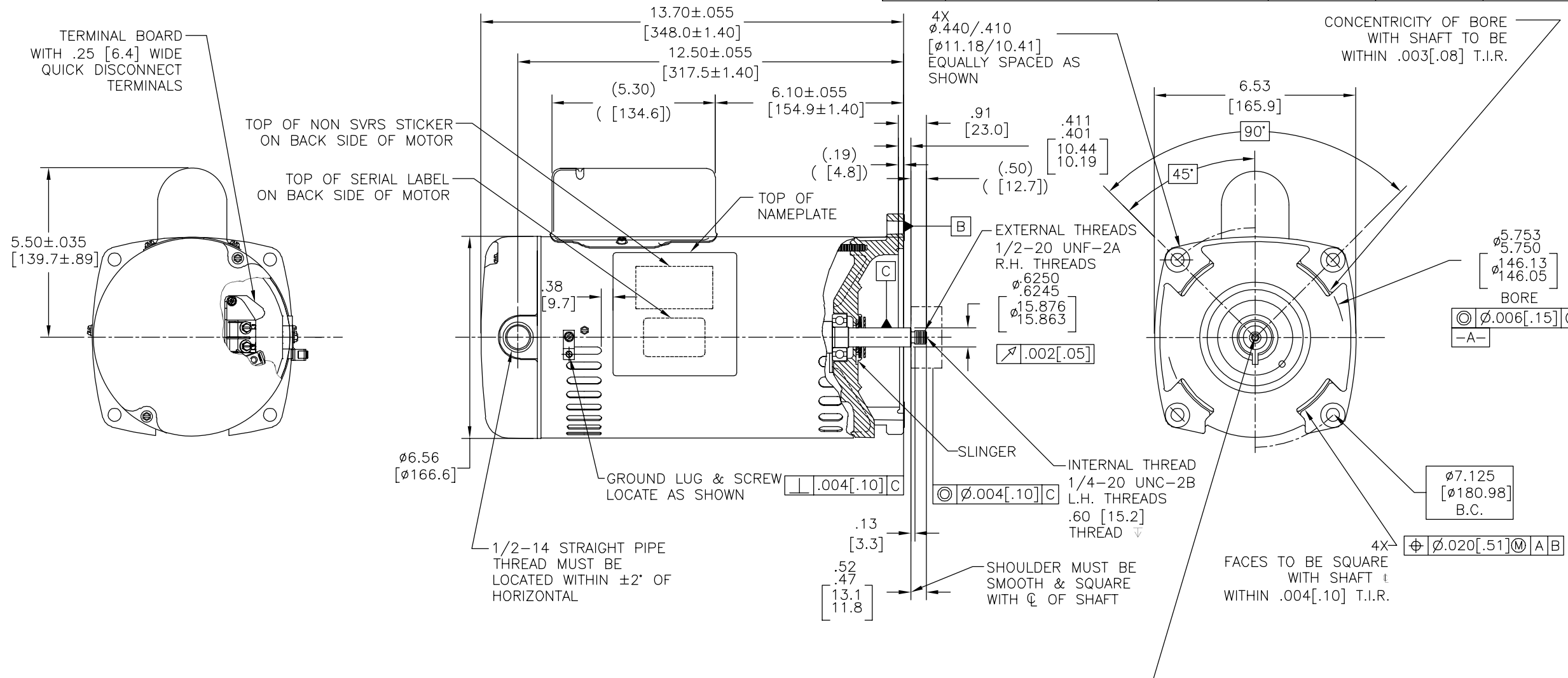


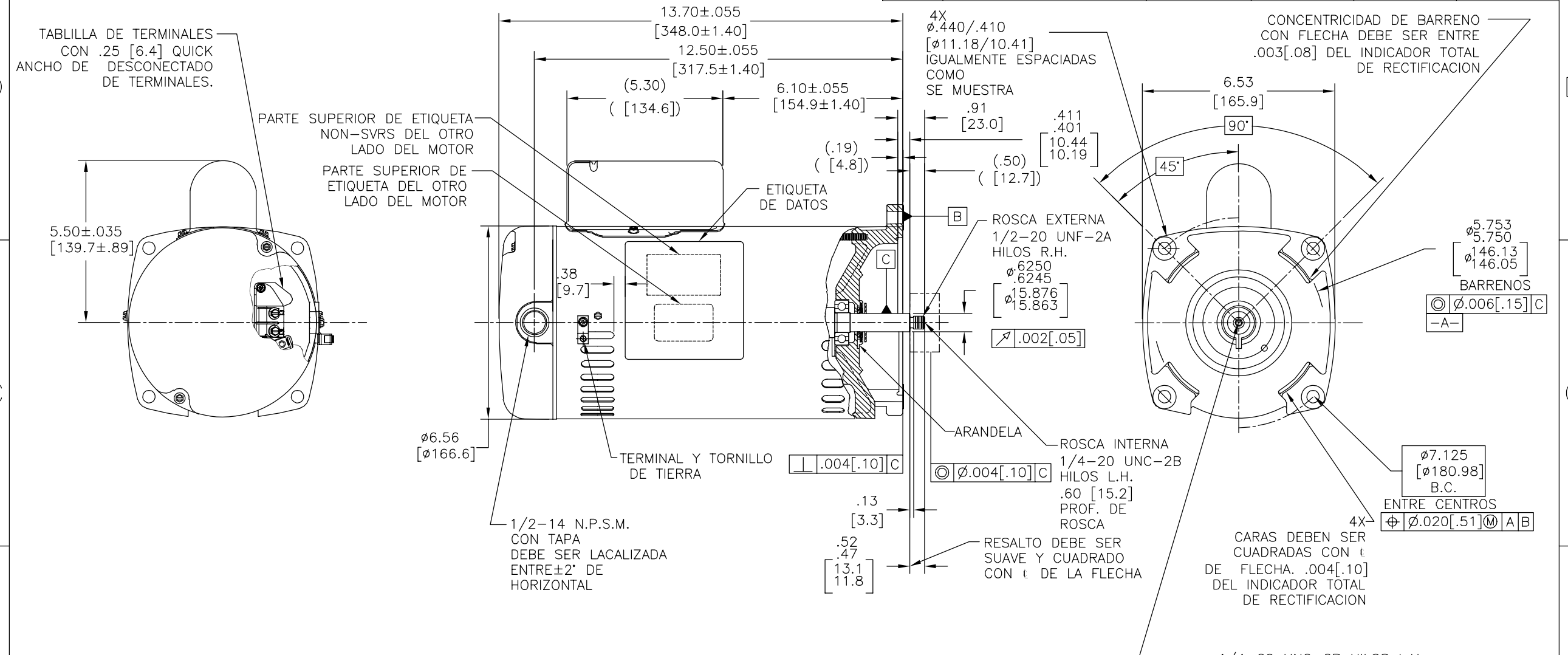
| | | | | | |
|-----|---------|-----------|------------|----------|------------|
| REV | ECO | REV BY | DATE | APPD | DATE |
| H | 0025579 | E.SINECIO | 04-25-2012 | R.RASCON | 04-25-2012 |



| NAMEPLATE DATA | EXTERNAL CONNECTION DIAGRAM | NOTES |
|---|---|---|
| MODEL: 196329 CUST PN: SQ1302V1 HP: 3.0 SF: 1.15 ROT: CCWPE RPM: 3450 TYPE: CP CODE: G FORM: FRAME: Y56Y VOLTS: 208-230 AMPS: MAX AMPS: 15.0-13.3 SF AMPS: - PH: 1 HZ: 60 INS: B AMB: 50°C DUTY: CONT ENCLOSURE: ODP THERMALLY PROTECTED | <p>USE COPPER CONDUCTORS ONLY. INSTALL MOTOR WITH VENTS DOWN. ACCEPTABLE FOR FIELD WIRING</p> | 1. FINISH PAINT TO BE BLACK LACQUER. 2. .44[11.2] WRENCH FLATS ON SHAFT FOR ACCESS TO THIS WRENCH FLAT REMOVE END COVER. 3. STAINLESS STEEL SHAFT 4. LIMITS ON AMPLITUDE OF VIBRATION MEASURED AT BEARING HOUSING=.001[.03]. |

| | | | | | | |
|-------------------|-----------------|--|---|--|------------|---|
| PERFORMANCE CURVE | APPROVED SAMPLE | GEOMETRIC CHARACTERISTICS & SYMBOLS ▽ FLATNESS - STRAIGHTNESS ∟ ANGULARITY ⊥ PERPENDICULARITY (SQUARENESS) // PARALLELISM ○ ROUNDNESS (CIRCULARITY) ∅ CYLINDRICITY △ PROFILE OF ANY SURFACE ∩ PROFILE OF ANY LINE ↑ RUNOUT ⊕ TRUE POSITION ⊙ CONCENTRICITY ≡ SYMMETRY | UNLESS OTHERWISE SPECIFIED DIM. TOLERANCES ARE AS FOLLOWS: INCH X XX XXX XXXX mm ±0.5 ±0.13 ±0.013 ANG. ±.50 DEG REMOVE BURRS & BREAK SHARP EDGES: INCH .003-.015 mm 0.1-0.4 CORNER FILLETS TO: INCH .020 mm 0.5 MACHINE SURFACES: INCH 125 mm 3.2 | DR BY: JAH | 03-01-2007 | REGAL-BELOIT CORPORATION DESCRIPTION MODEL-PFHP-56FR OUTLINE SIZE C DWG NO SQ1302V1 SCALE NONE SHEET 1 |
| 101101011 | 0603270A | | | APPD: JSM 03-07-2007 THIRD ANGLE PROJECTION EDS DATE 02-22-2008 FORMAT REV G CONFIDENTIAL: THIS DRAWING AND ITS INFORMATION ARE THE EXCLUSIVE AND CONFIDENTIAL PROPERTY OF REGAL-BELOIT CORPORATION AND ARE NOT TO BE DISCLOSED, DUPLICATED, DISTRIBUTED OR OTHERWISE USED WITHOUT THE WRITTEN CONSENT OF REGAL-BELOIT CORPORATION. -ALL RIGHTS RESERVED. | | |

| | | | | | |
|-----------|---------|---------------|------------|---------------|------------|
| REVISION: | ECO | REVISADO POR: | FECHA: | APROBADO POR: | FECHA: |
| H | 0025579 | E.SINECIO | 04-25-2012 | R.RASCON | 04-25-2012 |



| NAMEPLATE DATA | EXTERNAL CONNECTION DIAGRAM | NOTES |
|---|-----------------------------|---|
| MODEL: 196329 CUST PN: SQ1302V1 HP: 3.0 SF: 1.15 ROT: CCWPE RPM: 3450 TYPE: CP CODE: G FORM: FRAME: Y56Y VOLTS: 208-230 AMPS: MAX AMPS: 15.0-13.3 SF AMPS: - PH: 1 HZ: 60 INS: B AMB: 50°C DUTY: CONT ENCLOSURE: ODP THERMALLY PROTECTED | | <ol style="list-style-type: none"> PINTURA FINAL DEBE SER NEGRO LACQUER. .44[11.2] LLAVE PLANAS EN FLECHA-PARA ACCESO A ESTA LLAVE PLANA REMOVER CUBIERTA. FLECHA DE ACERO INOXIDABLE. LIMITES EN AMPLITUD DE VIBRACION MEDIDOS DE LA CAJA DE CAPACITOR = .001[±.03]. |

| | | | | | |
|-------------------|-----------------------|---|-----------------------------|--|---|
| PERFORMANCE CURVE | APPROVED SAMPLE | CARACTERISTICAS DE GEOMETRIA Y SIMBOLOS ▽ PLANICIDAD - RECTITUD < ANGULARIDAD ⊥ PERPENDICULARIDAD (A ESCUADRA) // PARALELISMO ○ REDONDEZ (CIRCULARIDAD) ∅ CILINDRICIDAD △ PERFIL DE CUALQUIER SUPERFICIE ▲ PERFIL DE CUALQUIER LINEA † VARIACION ⊕ POSICION REAL ⊙ CONCENTRICIDAD = SIMETRIA ASME Y14.5M 1994 | DIBUJADO POR: JAH | 03-01-2007 | DESCRIPCION: MODEL-PFHP-56FR OUTLINE TAMAÑO: C NUMERO DE DIBUJO: SQ1302V1 ESCALA: NONE HOJA: 1 |
| 101101011 | 0603270A | | APROBADO POR: JSM | 03-07-2007 | |
| UL COMPONENT | CSA | | TERCER ANGULO DE PROYECCION | FECHA EDS: 02-22-2008 REV. FORMATO: G | |
| FILE# | CCN# | | PENDING | PENDING | |
| CUSTOMER | DISTRIBUTION SERVICES | | | | |

4

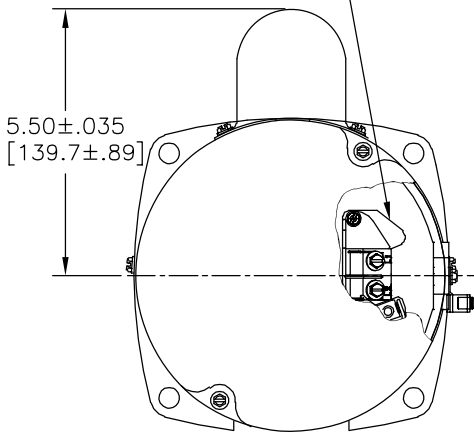
3

2

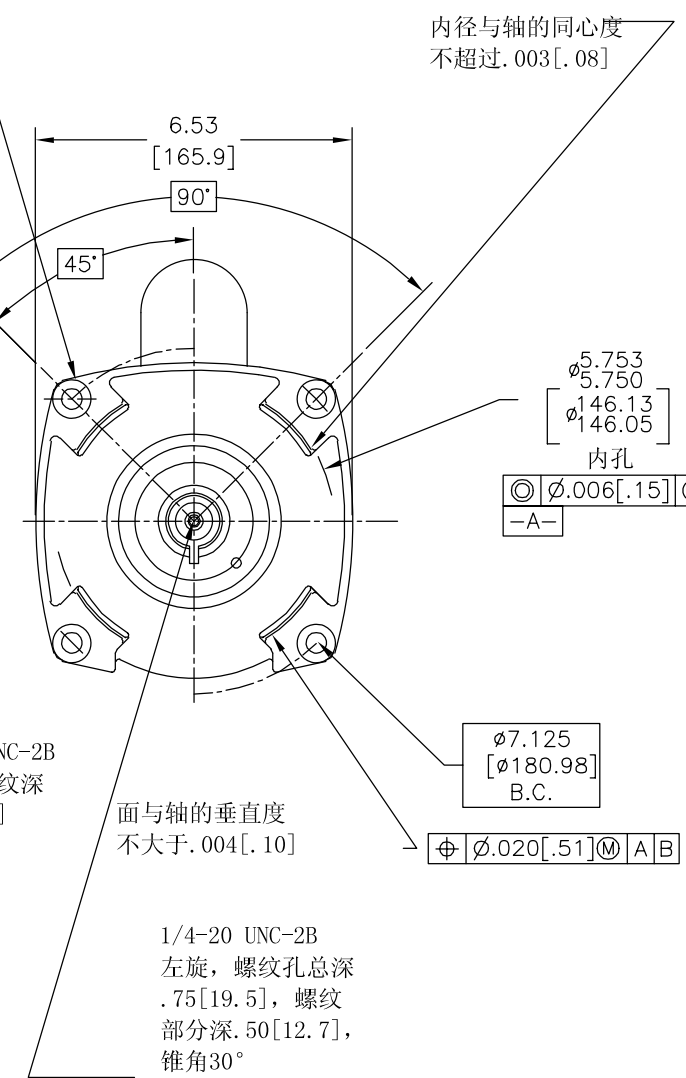
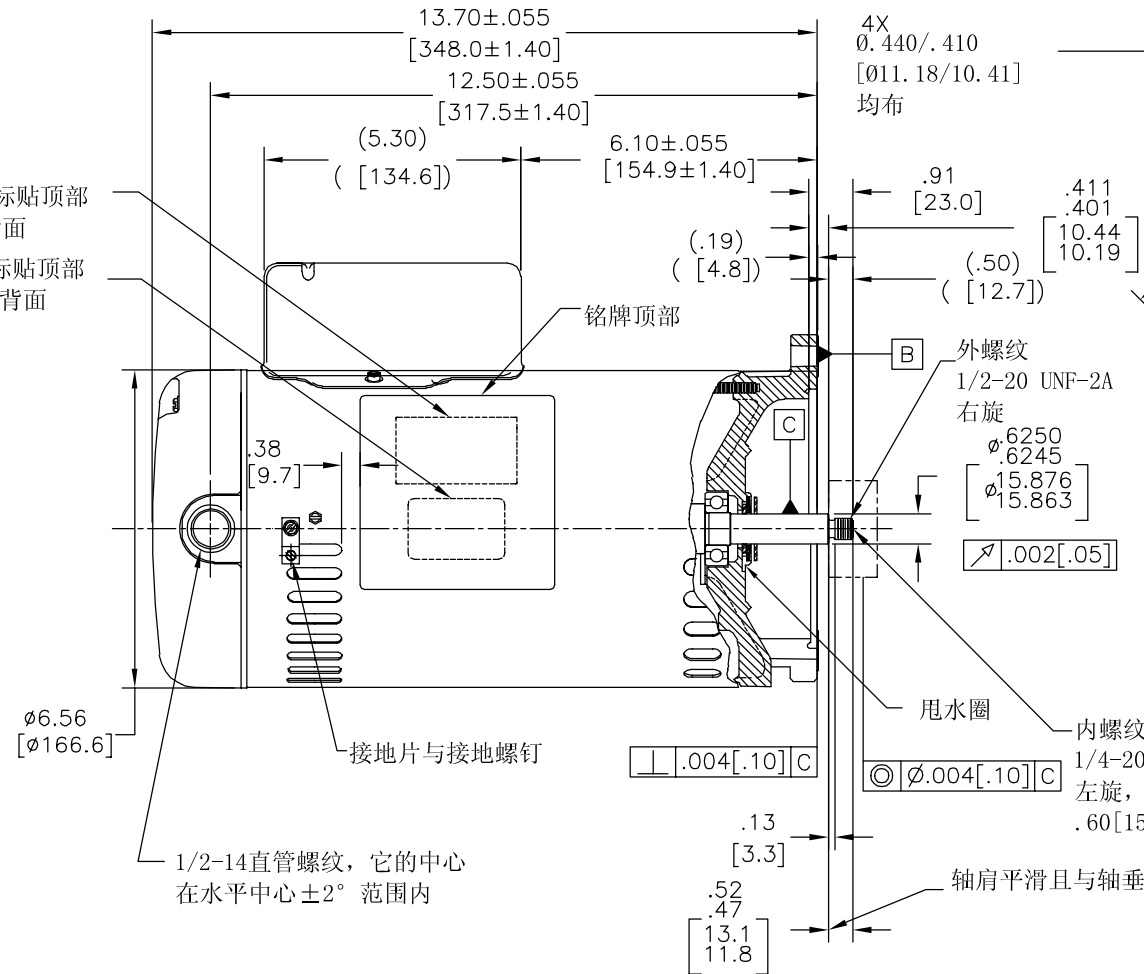
1

| | | | | | |
|----|---------|-----------|------------|----------|------------|
| 版本 | ECO | 编制 | 日期 | 批准 | 日期 |
| H | 0025579 | E.SINECIO | 04-25-2012 | R.RASCON | 04-25-2012 |

端子板宽.25[6.4]



NON SVRS 标贴顶部
在电机的背面
SERIAL 标贴顶部
在电机的背面

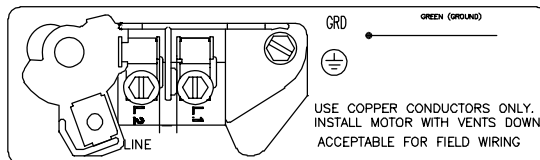


NAMEPLATE DATA

EXTERNAL CONNECTION DIAGRAM

NOTES

MODEL: 196329
CUST PN: SQ1302V1
HP: 3.0 SF: 1.15
ROT: CCWPE
RPM: 3450
TYPE: CP CODE: G
FORM: FRAME: Y56Y
VOLTS: 208-230
AMPS:
MAX AMPS: 15.0-13.3
SF AMPS: -
PH: 1 HZ: 60
INS: B AMB: 50°C
DUTY: CONT
ENCLOSURE: ODP
THERMALLY PROTECTED



1. 表面喷黑色漆。
2. 移去后盖可见.44[11.2]的扁身。
3. 轴伸部分为不锈钢。
4. 在轴承室测量震动值最大震幅=.001[.03]。

PERFORMANCE CURVE

APPROVED SAMPLE

| | | | |
|--------------|-----------------------|---------|---------|
| 101101011 | 0603270A | | |
| UL COMPONENT | CSA | | |
| FILE# | CCN# | FILE# | GUIDE# |
| PENDING | PENDING | PENDING | PENDING |
| CUSTOMER | DISTRIBUTION SERVICES | | |

| | |
|--------|--------------------------|
| 形位公差 | 除另有注明 |
| □ 平面度 | 尺寸公差如下: |
| — 直线度 | 英寸 X XX XXX XXXX |
| ∠ 倾斜度 | 英寸 ±.1 ±.02 ±.005 ±.0005 |
| ⊥ 垂直度 | 毫米 ±0.5 ±0.13 ±0.013 |
| ∥ 平行度 | 角度 ±.50度 |
| ○ 圆度 | 清理毛刺和尖棱 |
| ⊘ 圆柱度 | 英寸 .003-.015 毫米 0.1-0.4 |
| △ 面轮廓度 | 内圆角 |
| ∩ 线轮廓度 | 英寸 .020 毫米 0.5 |
| ↗ 圆跳动 | 表面粗糙度 |
| ⊕ 位置度 | 英制 125 米制 3.2 |
| ⊙ 同轴度 | 米制尺寸显示在 [] |
| ≡ 对称度 | |

除另有注明
尺寸公差如下:
英寸 X XX XXX XXXX
英寸 ±.1 ±.02 ±.005 ±.0005
毫米 ±0.5 ±0.13 ±0.013
角度 ±.50度
清理毛刺和尖棱
英寸 .003-.015 毫米 0.1-0.4
内圆角
英寸 .020 毫米 0.5
表面粗糙度
英制 125 米制 3.2
米制尺寸显示在 []

绘图:

JAH 03-01-2007

批准:

JSM 03-07-2007

第三角投影



图纸格式发布日期 02-22-2008
图纸格式版本 G

机密: 本图纸及相关信息所有权归REGAL-BELOIT CORPORATION. 未经REGAL-BELOIT CORPORATION书面授权, 不得泄露、复制、传播或作其他用途。—版权所有



名称

MODEL-PFHP-56FR
OUTLINE

图幅

C

图号

SQ1302V1

比例

NONE

页号

1

4

3

2

1