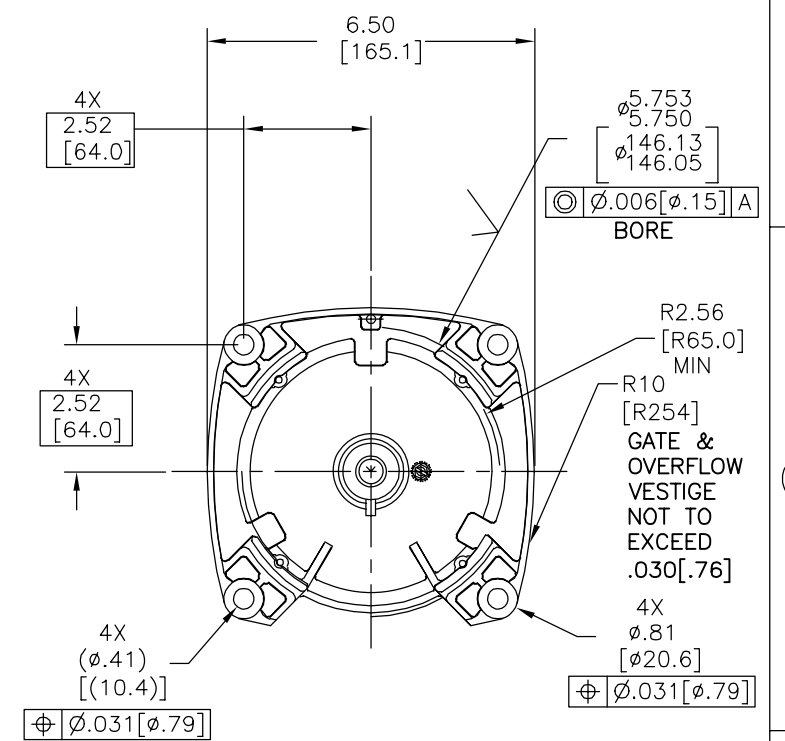
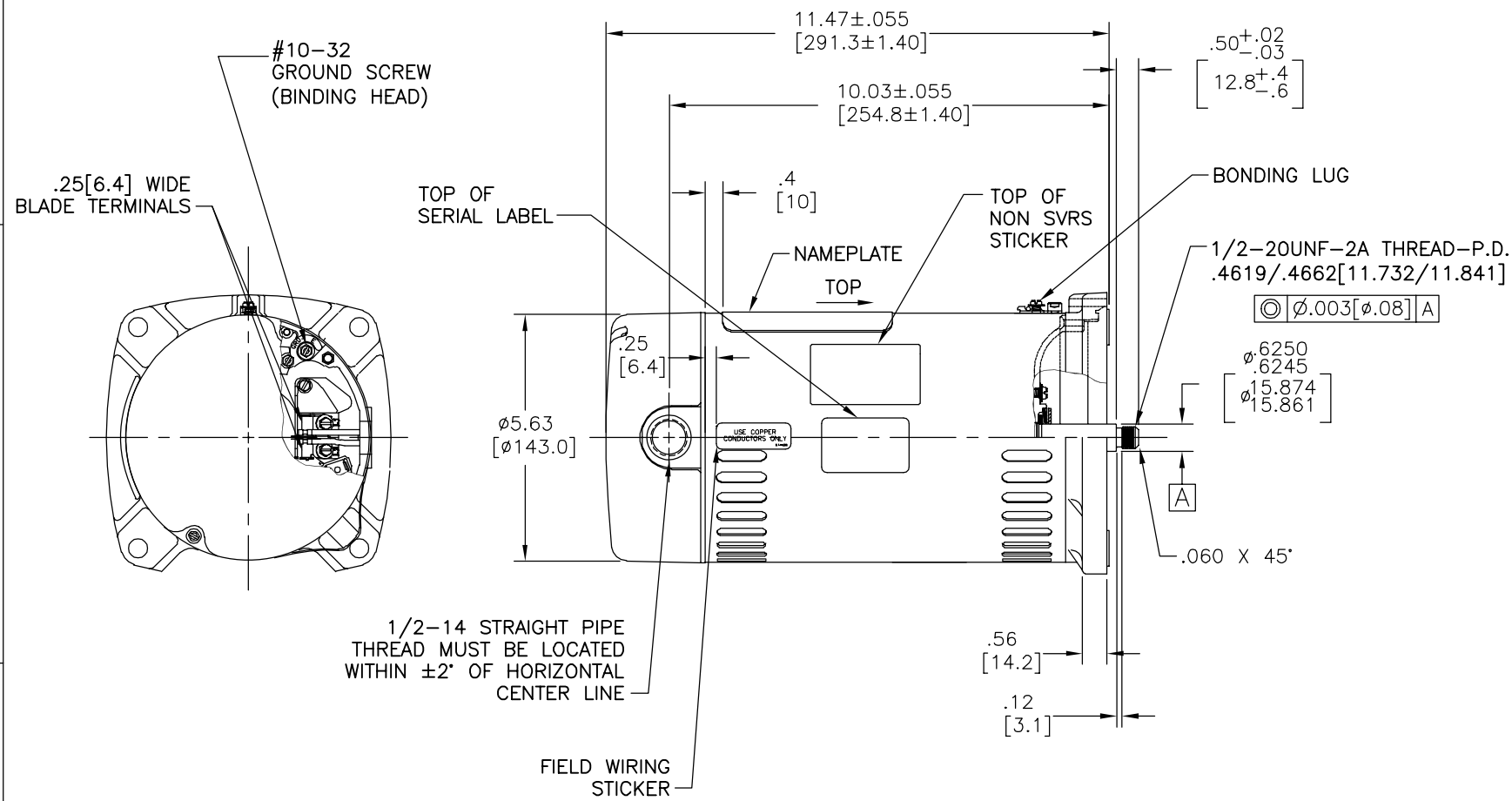
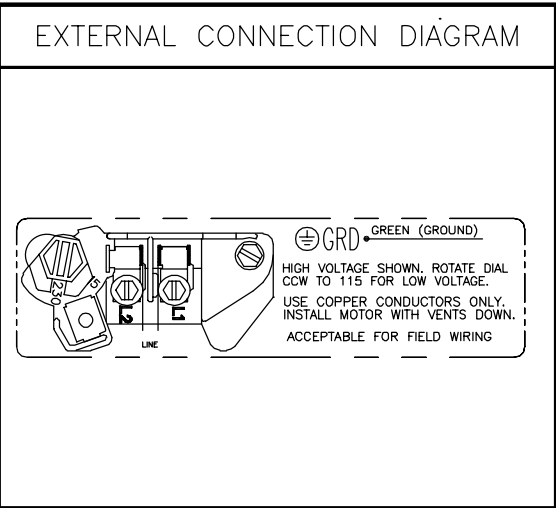


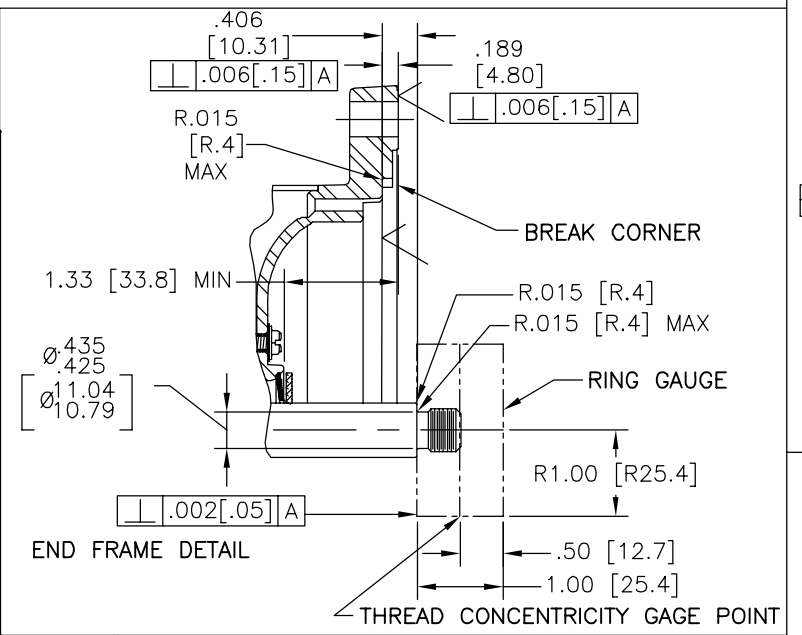
REV	ECO	REV BY	DATE	APPD	DATE
J	0025579	E.SINECIO	04-25-2012	R.RASCON	04-25-2012



NAMEPLATE DATA	
MODEL: C48J2PA105C4	
CUST PN: SQ1052	
HP: 0.5	SF: 1.9
ROT: CCWPE	
RPM: 3450	
TYPE: UAC	CODE: M
FORM:	FRAME: 48 Y
VOLTS: 115/230	
AMPS:	
MAX AMPS: 11.8/5.9	
SF AMPS: 12.0/6.0	
PH: 1	HZ: 60
INS: B	AMB: 50°C
DUTY: CONT	
ENCLOSURE: ODP	
THERMALLY PROTECTED	



- | NOTES |
|---|
| 1. FINISH PAINT TO BE SATIN BLACK. |
| 2. .44[11.2] WRENCH FLATS ON SHAFT-FOR ACCESS TO THIS WRENCH FLAT REMOVE END COVER. |
| 3. STAINLESS STEEL SHAFT EXT. |
| 4. LIMITS ON AMPLITUDE OF VIBRATION MEASURED AT BEARING HOUSING = .001. |
| 5. CONNECTED FOR 230 VOLTS. QUICK VOLTAGE CHANGE DIAL INCLUDED ON THE TERMINAL BOARD. |
| 6. SUPPORT PAD TO BE PACKED WITH EACH MOTOR |



PERFORMANCE CURVE	APPROVED SAMPLE		
C48J2W41			
UL COMPONENT	CSA		
FILE#	CCN#	FILE#	GUIDE#
E25022	XEWR2	LR43341	4211-01
CUSTOMER	DISTRIBUTION SERVICES		

GEOMETRIC CHARACTERISTICS & SYMBOLS

- FLATNESS
- STRAIGHTNESS
- ∠ ANGULARITY
- ⊥ PERPENDICULARITY (SQUARENESS)
- // PARALLELISM
- ROUNDNESS (CIRCULARITY)
- ⊘ CYLINDRICITY
- △ PROFILE OF ANY SURFACE
- ∩ PROFILE OF ANY LINE
- ↑ RUNOUT
- ⊕ TRUE POSITION
- ◎ CONCENTRICITY
- ≡ SYMMETRY

ASME Y14.5M 1994

UNLESS OTHERWISE SPECIFIED DIM. TOLERANCES ARE AS FOLLOWS:

INCH X XX XXX XXXX

mm ±0.5 ±0.13 ±0.013

ANG. ±.50 DEG

REMOVE BURRS & BREAK SHARP EDGES:

INCH .003-.015 mm 0.1-0.4

CORNER FILLETS TO:

INCH .020 mm 0.5

MACHINE SURFACES:

INCH 125 mm 3.2

METRIC DIMS. SHOWN IN [BRACKETS]

DR BY: JLG 05-12-2009

APPD:

THIRD ANGLE PROJECTION

EDS DATE 02-22-2008

FORMAT REV G

CONFIDENTIAL: THIS DRAWING AND ITS INFORMATION ARE THE EXCLUSIVE AND CONFIDENTIAL PROPERTY OF REGAL-BELOIT CORPORATION AND ARE NOT TO BE DISCLOSED, DUPLICATED, DISTRIBUTED OR OTHERWISE USED WITHOUT THE WRITTEN CONSENT OF REGAL-BELOIT CORPORATION. -ALL RIGHTS RESERVED.

DESCRIPTION	
MODEL-PFHP-48FR OUTLINE	
SIZE C	DWG NO SQ1052
SCALE NONE	SHEET 1

REVISION:	ECO	REVISADO POR:	FECHA:	APROBADO POR:	FECHA:
J	0025579	E.SINECIO	04-25-2012	R.RASCON	04-25-2012

D

C

B

A

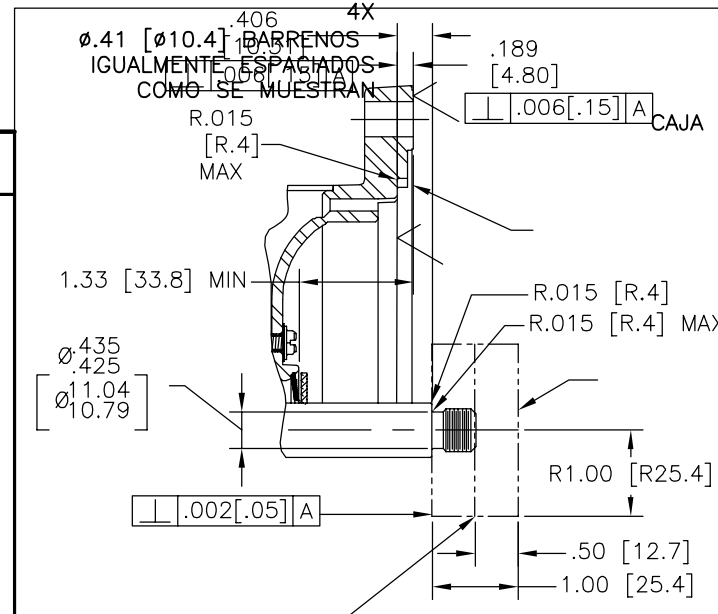
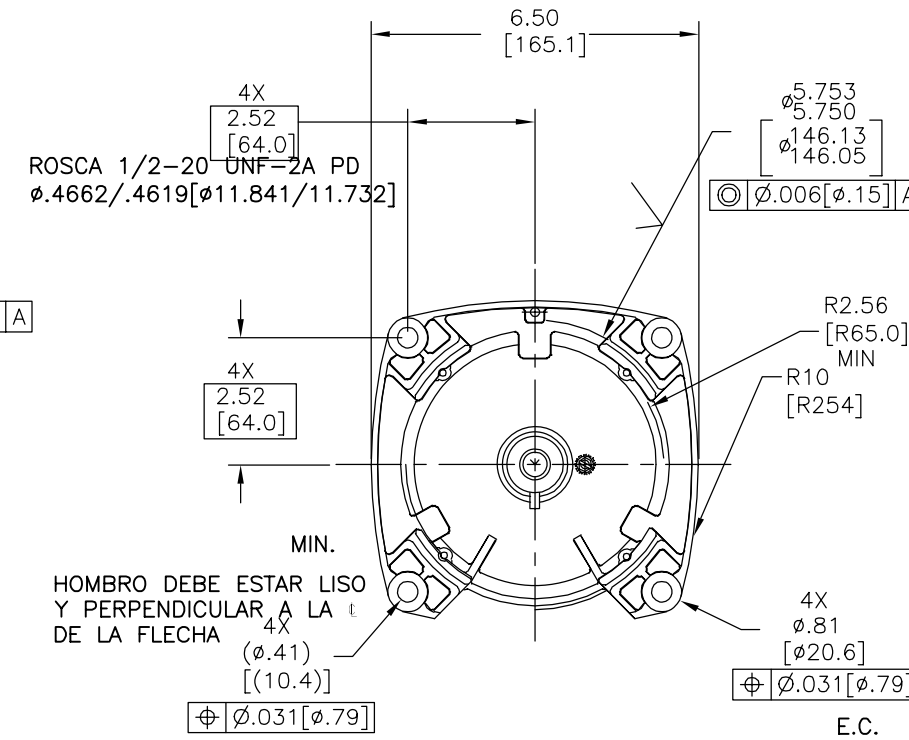
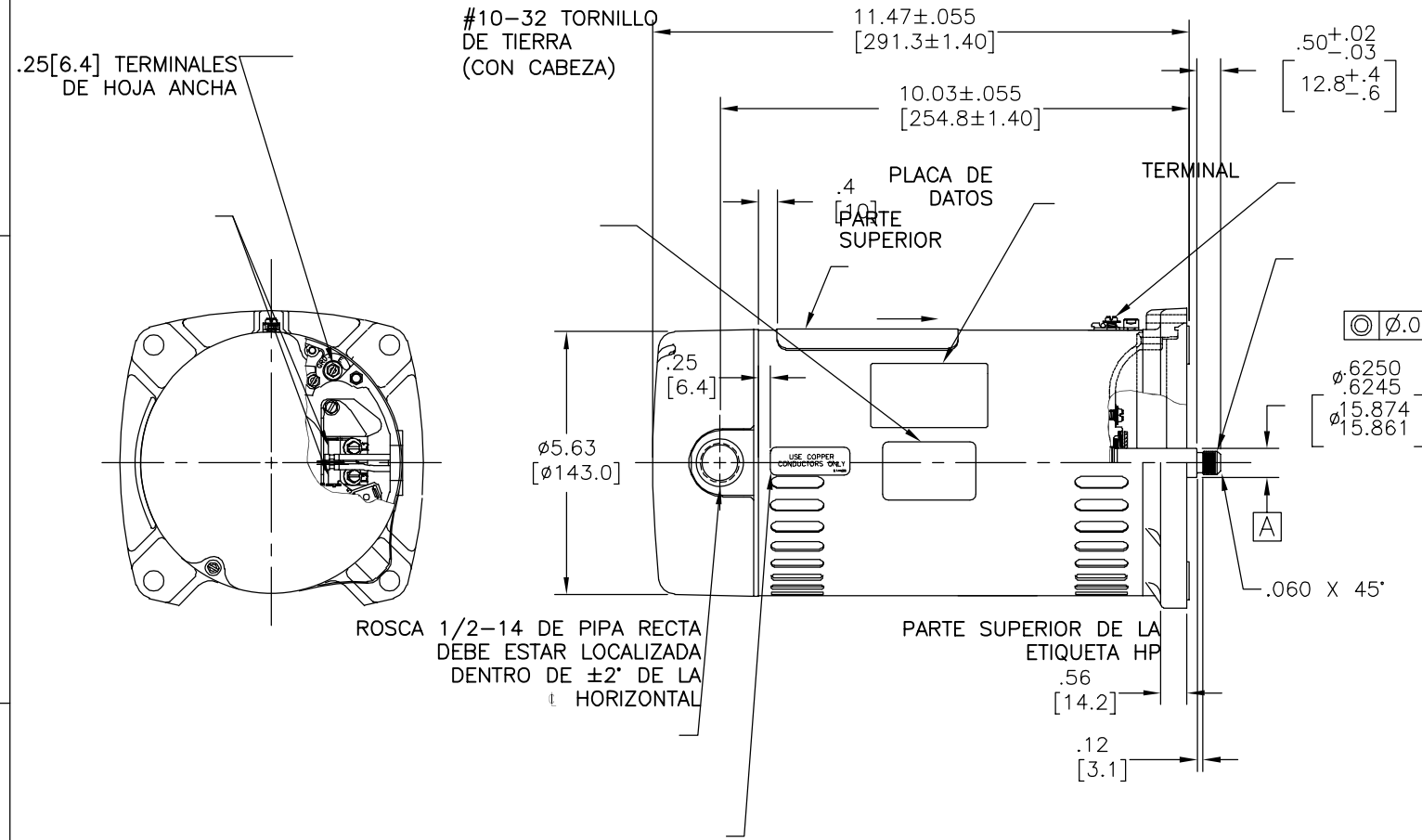
D

C

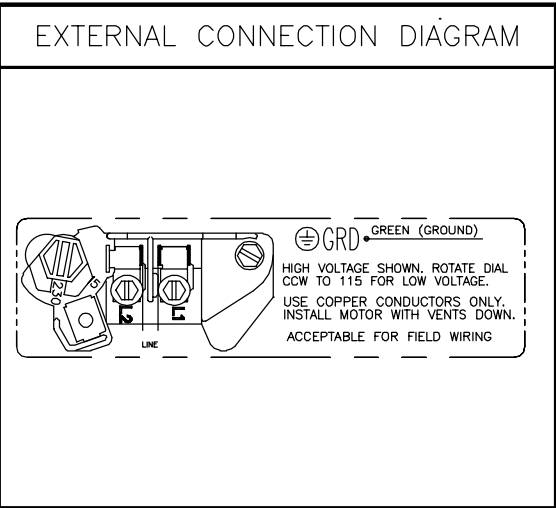
B

A

ETIQUETA DEL CAMPO CABLEADO



NAMEPLATE DATA	
MODEL: C48J2PA105C4	CUST PN: SQ1052
HP: 0.5	SF: 1.9
ROT: CCWPE	
RPM: 3450	
TYPE: UAC	CODE: M
FORM:	FRAME: 48 Y
VOLTS: 115/230	
AMPS:	
MAX AMPS: 11.8/5.9	
SF AMPS: 12.0/6.0	
PH: 1	HZ: 60
INS: B	AMB: 50°C
DUTY: CONT	
ENCLOSURE: ODP	
THERMALLY PROTECTED	



- NOTES
- EL ACABADO DE LA PINTURA DEBE SER NEGRO
 - LOS PLANOS DE LA FLECHA .44[11.2] PARA ACCESAR A ESTA LLAVE PLANA REMOVER LA CUBIERTA
 - EXTENSION DE FLECHA DE ACERO INOXIDABLE
 - LIMITES PARA AMPLITUD DE VIBRACION MEDIDA EN LA CAVIDAD DEL BALERO = .001[.03]
 - CONECTADO PARA ALTO VOLTAJE. CLAVIJA DE ALTO VOLTAJE INCLUIDA EN EL TABLERO DE TERMINALES
 - SOPORTE ATENUADOR DEBE SER EMPACADO CON EL MOTOR

PERFORMANCE CURVE	APPROVED SAMPLE		
C48J2W41			
UL COMPONENT	CSA		
FILE#	CCN#	FILE#	GUIDE#
E25022	XEWR2	LR43341	4211-01
CUSTOMER	DISTRIBUTION SERVICES		

CARACTERISTICAS DE GEOMETRIA Y SIMBOLOS

- PLANICIDAD
- RECTITUD
- ANGULARIDAD
- PERPENDICULARIDAD (A ESCUADRA)
- PARALELISMO
- REDONDEZ (CIRCULARIDAD)
- CILINDRICIDAD
- PERFIL DE CUALQUIER SUPERFICIE
- PERFIL DE CUALQUIER LINEA
- VARIACION
- POSICION REAL
- CONCENTRICIDAD
- SIMETRIA

ASME Y14.5M 1994

A MENOS QUE SE ESPECIFIQUE DE OTRA MANERA, LAS TOLERANCIAS DE LAS DIMS; SON LAS SIGUIENTES:

PULG ±.1 ±.02 ±.005 ±.0005

mm ±0.5 ±0.13 ±0.013

ANG. ±50 GRADOS

ELIMINAR REBABAS Y ORILLAS FILOSAS DEL BORDE.

PULG .003-.015 mm 0.1-0.4

FILETEAR ESQUINA: PULG .020 mm 0.5

MAQUINAR SUPERFICIES

PULG 125 mm 3.2

DIMS METRICAS MOSTRADAS [PARENTESIS]

DIBUJADO POR:	JLG	05-12-2009
APROBADO POR:		
TERCER ANGULO DE PROYECCION		FECHA EDS: 02-22-2008
		REV. FORMATO: G
CONFIDENCIAL: ESTE DIBUJO Y SU INFORMACION SON PROPIEDAD DE USO EXCLUSIVO Y CONFIDENCIAL DE REGAL-BELOIT CORPORATION. Y NO DEBERAN SER REVELADOS, DUPLICADOS, DISTRIBUIDOS O USARSE DE OTRA MANERA SIN EL CONSENTIMIENTO ESCRITO DE REGAL-BELOIT CORPORATION. -TODOS LOS DERECHOS RESERVADOS.		

DESCRIPCION:	
MODEL-PFHP-48FR OUTLINE	
TAMAÑO: C	NUMERO DE DIBUJO: SQ1052
ESCALA: NONE	HOJA: 1

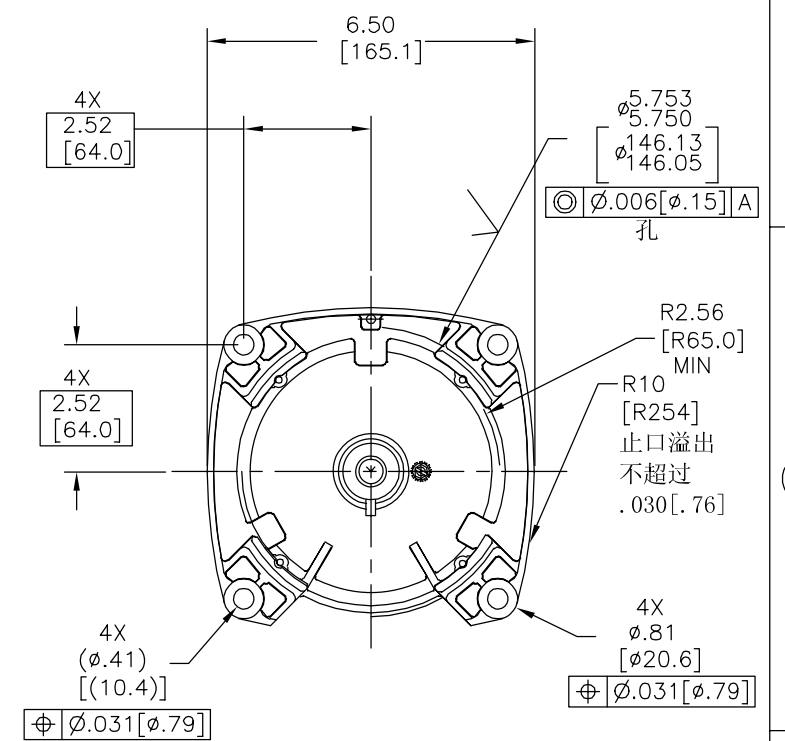
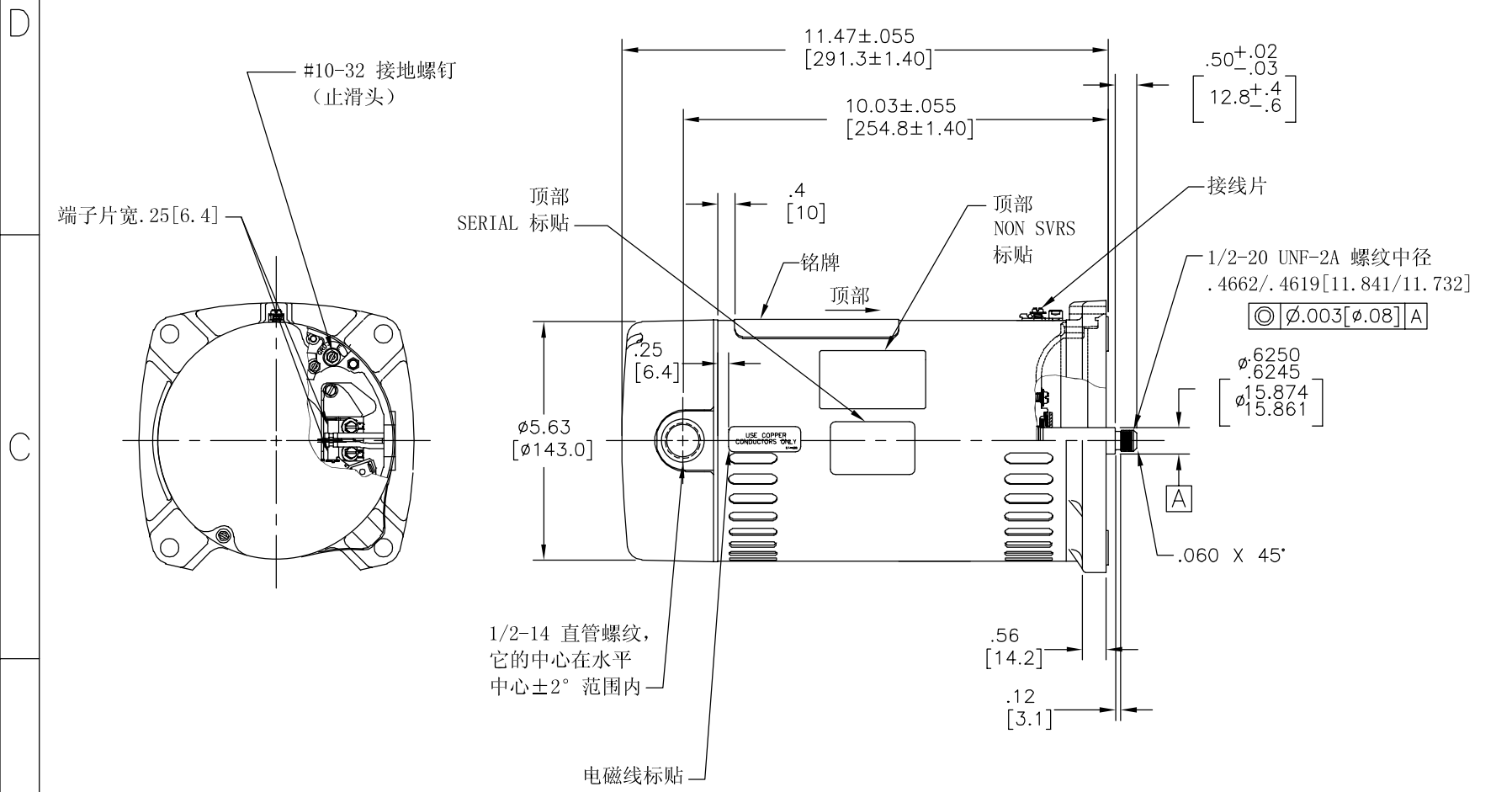
4

3

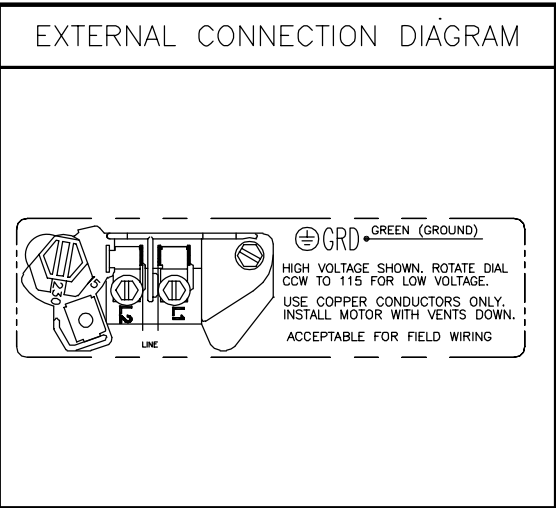
2

1

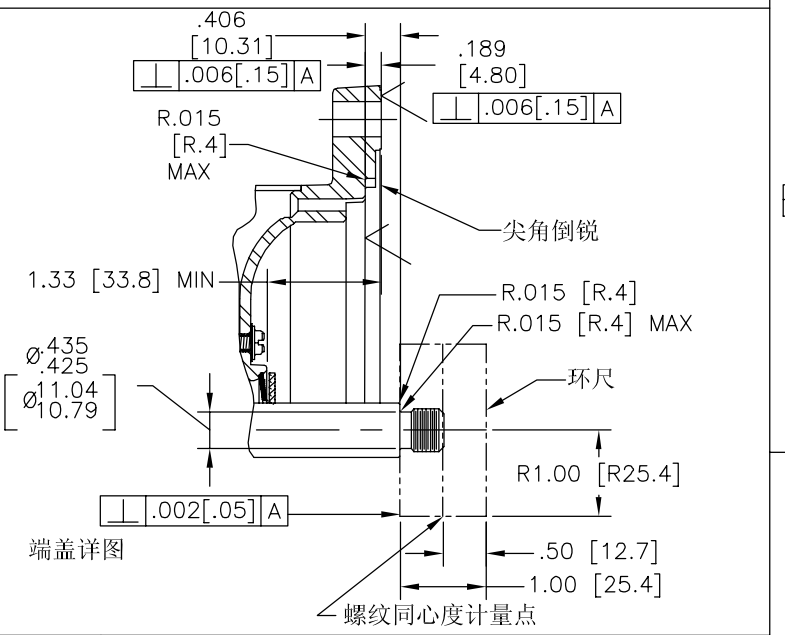
版本	ECO	编制	日期	批准	日期
J	0025579	E.SINECIO	04-25-2012	R.RASCON	04-25-2012



NAMEPLATE DATA	
MODEL: C48J2PA105C4	
CUST PN: SQ1052	
HP: 0.5	SF: 1.9
ROT: CCWPE	
RPM: 3450	
TYPE: UAC	CODE: M
FORM:	FRAME: 48 Y
VOLTS: 115/230	
AMPS:	
MAX AMPS: 11.8/5.9	
SF AMPS: 12.0/6.0	
PH: 1	HZ: 60
INS: B	AMB: 50°C
DUTY: CONT	
ENCLOSURE: ODP	
THERMALLY PROTECTED	



- NOTES
1. 表面处理喷黑漆。
 2. 移去后盖可见.44[11.2]的扁身。
 3. 不锈钢轴伸。
 4. 在轴承室测量的振动值最大震幅=.001[.03]。
 5. 电机接高电压。端子上包括快速改变电压的插销。
 6. 支撑衬垫需和电机一起包装



PERFORMANCE CURVE	APPROVED SAMPLE		
C48J2W41			
UL COMPONENT	CSA		
FILE#	CCN#	FILE#	GUIDE#
E25022	XEWR2	LR43341	4211-01
CUSTOMER	DISTRIBUTION SERVICES		

形位公差	除另有注明
□ 平面度	尺寸公差如下:
— 直线度	英寸 X XX XXX XXXX
∠ 倾斜度	英寸 ±.1 ±.02 ±.005 ±.0005
⊥ 垂直度	毫米 ±0.5 ±0.13 ±0.013
// 平行度	角度 ±.50 度
○ 圆度	清理毛刺和尖棱
⊘ 圆柱度	英寸 .003-.015 毫米 0.1-0.4
△ 内圆角	英寸 .020 毫米 0.5
∩ 面轮廓度	表面粗糙度
∩ 线轮廓度	英制 125 米制 3.2
↗ 圆跳动	米制尺寸显示在 []
⊕ 位置度	
⊙ 同轴度	
≡ 对称度	

绘图:	JLG	05-12-2009
批准:		
第三角投影	⊕	图纸格式发布日期 02-22-2008 图纸格式版本 G
机密: 本图纸及相关信息所有权归REGAL-BELOIT CORPORATION. 未经REGAL-BELOIT CORPORATION书面授权, 不得泄露、复制、传播或作其他用途。—版权所有		

名称		MODEL-PFHP-48FR OUTLINE
图幅	C	图号 SQ1052
比例	NONE	页号 1

REGAL-BELOIT CORPORATION	
名称	
图幅	
比例	
图号	
页号	