



www.interfab.com

X-stream Slide



**Assembly and Installation
Instructions**



Assembly/Installation Instructions for X-stream Slide

The following Assembly and Installation instructions are listed in the correct sequence for a straightforward assembly of the X-stream Slide. Please read and understand all instructions before beginning installation. A two-person crew is recommended for best results, as the assembled slide is very long, and unwieldy for one person to handle. The Footprint Templates (A-2, A-3) are for reference only, and it is strongly recommended that the slide not be permanently anchored to deck until the proper time in the assembly order.

Choose the Water Stub-up Location and Footprint Template for the the applicable X-stream slide from the following figures.

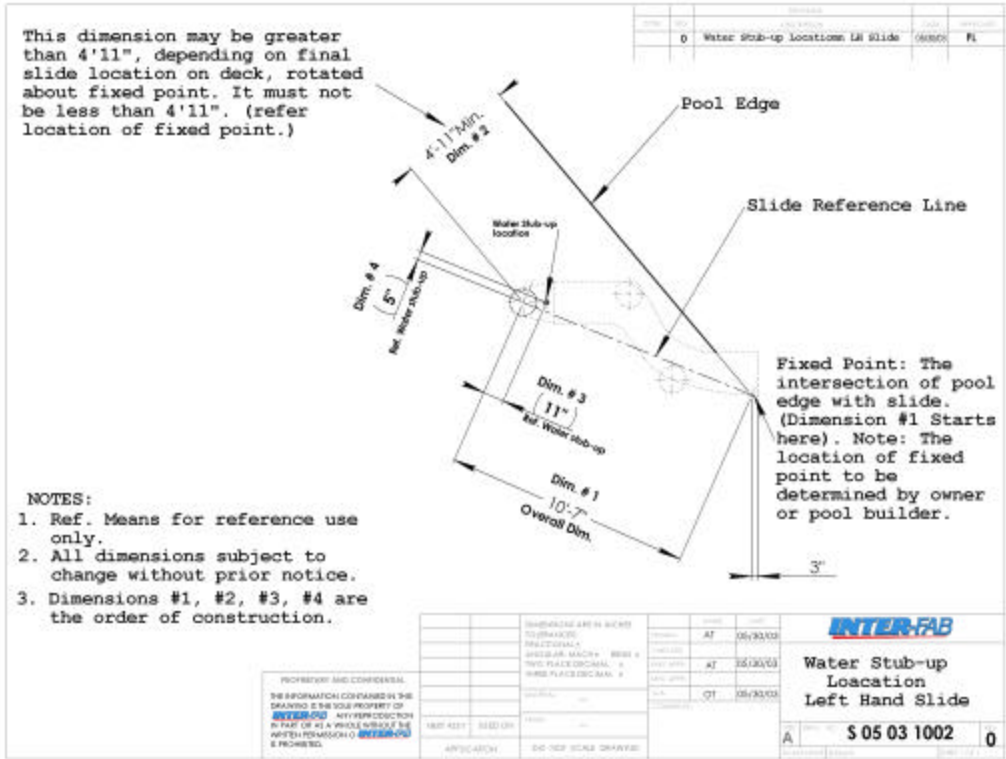
Fig. A-1: Water Stub-up Location, Left Hand Slide

Fig. A-2: X-stream Footprint, Left Hand Slide

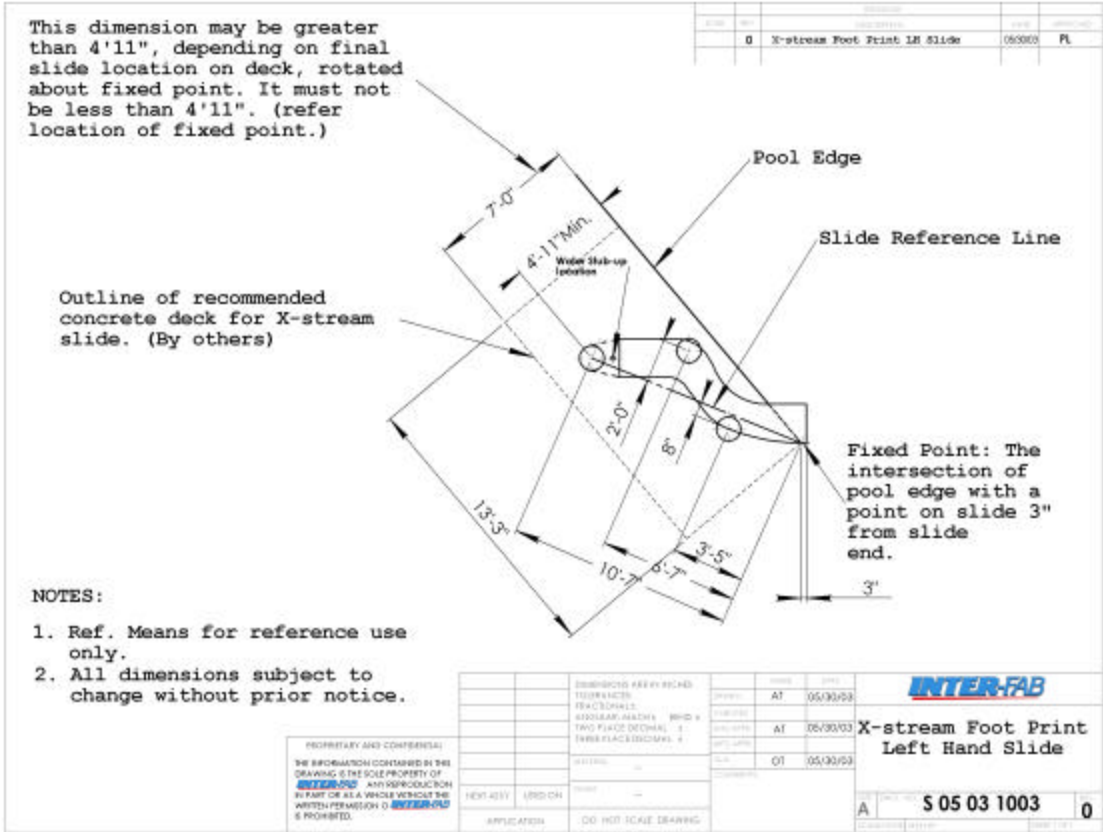
**Fig. A-3 Water Stub-up Location, Right Hand Slide,
and X-stream Footprint, Right Hand Slide**

For List of Parts, and Required Tools, See Fig. B, and Schedule One

Important Note: Following Step Seven in the Installation Instructions are two pages, one indicating an exploded view of the entire slide, followed by a complete description of all the hardware used to assemble the slide.



A-1



A-2

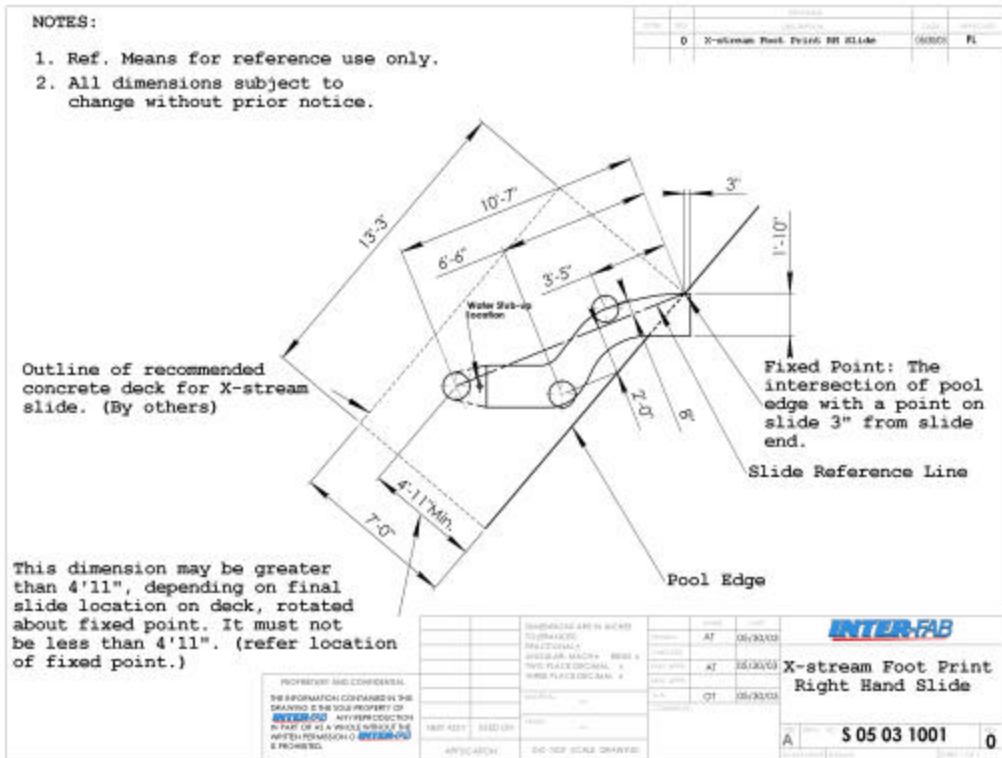
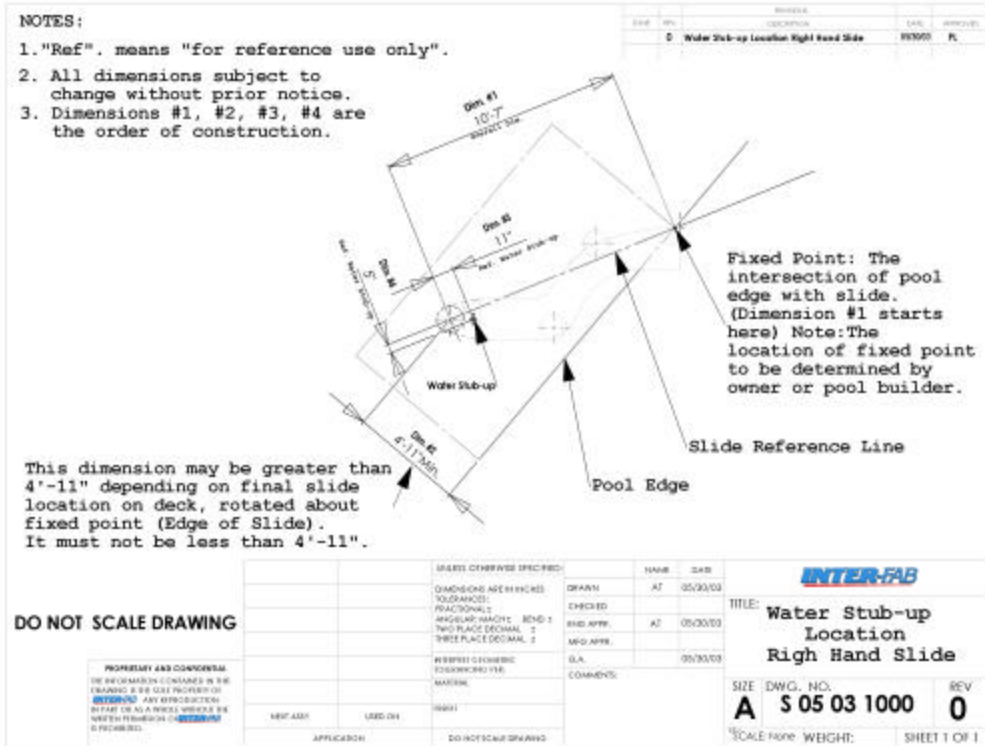


Fig A-3



A-B flume



C-D flume

Important! Flumes are labeled AB or CD in small letters on flanges. For Left Hand Slides, Flume AB is upper flume, and CD is the lower flume, in that order; for a Right Hand Slide, CD is the Upper Flume and AB is the Lower.



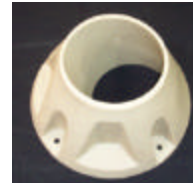
Bottom Section



Top section



Leg foot (2)



Step Support Foot



**Step Support Assembly
(shown with foot installed)**



Long leg



Short leg



Handrail (2)



Hardware Sets (5)

Fig. B: Parts Required

List of Tools

Tools required for assembly and installation of X-stream slide

1. Hammer
2. 3/8" drive ratchet
3. 3/8" x 6" ratchet extension
4. 1/2" socket
5. 9/16" socket
6. 9/16" box end ratchet wrench
7. Drill with 3/8" masonry bit
8. Tape measure
9. PVC Pipe Cutter

Schedule One Required Tools

ASSEMBLY AND INSTALLATION INSTRUCTIONS

Step One

- Install foot receiver on 6" PVC pipe Step Support Assembly, using 3/8"x 2" bolts at two locations, and 2-1/2" bolt for the location directly underneath the Step Support Assembly Column. Push bolt thru 3/8" lock washer, thru 3/8" flat washer, thru pre-drilled holes in PVC and Foot Receiver, thru 3/8" flat washer, and thru 3/8" nylon locking nut. This foot receiver contains only three holes for complete attachment. (Fig. 4) Use Hardware Set #1. Tighten all connections.

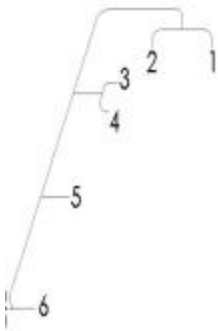


Fig. 1 (Note: The short item at the bottom is 12" rule)

- Connect Step Support Assembly to Top Section (Fig. 2) This assembly may be done with Top Section on ground, on its side. Insert 6" PVC Step Support

Assembly into receiver in Top Section. Using 3/8"x2" bolts provided in Hardware Set #3, push bolt thru 3/8" lock washer, thru 3/8" flat washer, thru pre-drilled hole in PVC pipe, and into pre-inserted nut in the receiver in Top Section. Make sure orientation of Top Section is such that Handrail will connect to both Top Section and Step Section. Tighten connections slightly.

Connect Handrail to the Top Section of the slide and to steps before attaching the Top Section to the Upper Flume. Note: Handrails must be installed with X-stream label out. Use the 5/16" bolts x required length (see Schedule Two) and washers from Hardware set #5 to connect the Top Section to insert nuts in the Handrail. A ratchet extension will be required for bolts through flange of Top Section. Push bolt thru Lock washer, thru flat washers, thru hole provided in Top Section or Steps, into pre-inserted nuts in handrail, and tighten all these connections. The Ladder Step Support Sub Assembly is now complete.



Bolts Required for Each Handrail (2 Handrails)

1. (1) 5/16" x 1-1/4" hex head zinc bolt
2. (1) 5/16" x 2-1/2" hex head zinc bolt
3. (1) 5/16" x 1-1/2" hex head zinc bolt
4. (1) 5/16" x 1-1/2" hex head zinc bolt
5. (1) 5/16" x 2" hex head zinc bolt
6. (1) 5/16" x 2" hex head zinc bolt

Schedule Two: Handrail Hardware

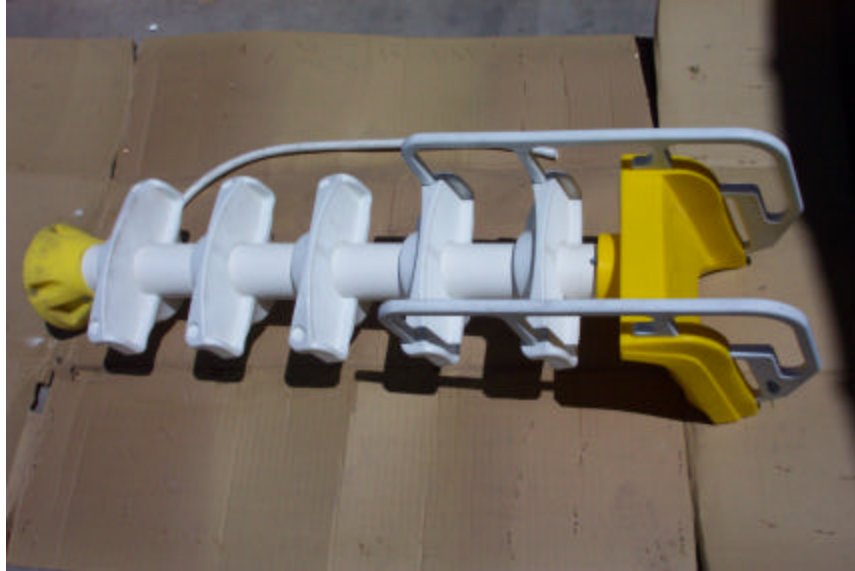


Fig. 2.: Ladder Step Support Sub-Assembly

- Step Two: Slide Legs**
- **Install remaining foot receivers on the long and short legs, using 3/8" x 2" bolts in four locations. Push PVC pipe all the way to the bottom of the foot receiver. Push 3/8" x 2" bolt thru 3/8" thru 3/8" flat washer, thru pre-drilled holes provided in PVC pipe and foot receiver, through 3/8" flat washer, and thru 3/8" nylon locking nut. Note: Do not confuse the four Foot receiver holes in PVC pipe with the four Flume receiver holes at top. (Foot receiver holes can be seen through 6" PVC pipe after pipe is pushed all the way down to bottom of Foot receiver). Tighten all connections. (Fig. 3, 4) Use Hardware Set #1**



Figs. 3, 4
Short Leg and Long Leg with Foot Attached

Step Three: Main Slide Assembly

(Note: This section may be assembled on the ground, with parts upside down or on their sides).

- **Connect Lower Flume Section to Upper flume Section, using 3/8" x 2-3/4" thru bolts in four locations, ensuring a flexible gasket is in place (installed at factory) (Fig. 5) Use Hardware Set #2. Push 3/8" bolt thru lock washer, thru flat washer, thru pre-drilled holes in flanges of both flumes, thru flat washer, thru 3/8" nuts. IMPORTANT NOTE: There is enough tolerance in the flange connections to provide a smooth and even transition between flumes on the sliding surface of the slide; usually, it will take the efforts of two persons to ensure this: one to pull or push up or down on either of the two flumes at the flange connection, and one to tighten the bolts when the top surfaces are even. It is recommended that the two center bolts be tightened first when this is done, and that the two outer connections be tightened when the sides are aligned, in a similar manner to the center ones. Tighten all connections. NOTE: Make sure AB/CD or CD/AB orientation is correct for Left or Right Hand slide as required (see note, Fig. B).**



Fig. 5

Connect exit section to lower flume, using 3/8" x 2-3/4" thru bolts in four locations (ensuring a flexible gasket has been installed by Mfr. in recess provided for that purpose). Push 3/8" bolt thru lock washer, thru flat washer, thru pre-drilled holes provided in both flanges, thru flat washers, thru 3/8" nut (Fig. 6). IMPORTANT NOTE above applies here also! Use Hardware Set #2. Tighten all connections.



Fig. 6

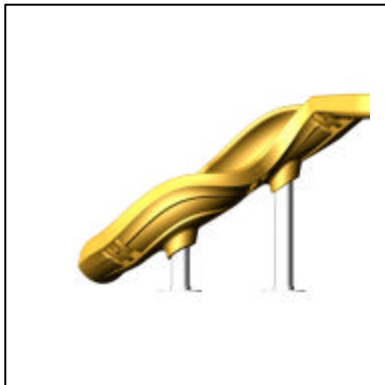
Step Four: Erection of Assembled Slide

- **Install loosely, legs to flumes as required: long leg to upper flume, short leg to lower flume, using 3/8" X 2" bolts from Hardware Set #3. Push bolt thru lock washer, thru flat washer, thru pre-drilled hole provided in PVC pipe, into pre-inserted nuts in flume leg receiver. Do not tighten completely at this time. (Fig. 7) Use Hardware Set #3.**



Fig. 7

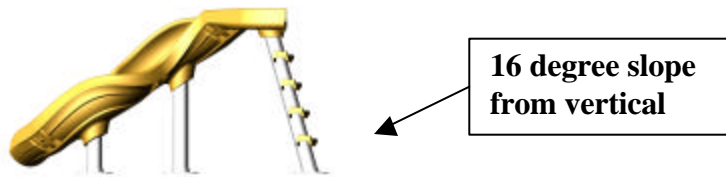
- **Turn slide assembly upright, resting it momentarily on the two legs. Now connect the Ladder Step Support Sub Assembly to the Upper Flume by bolting to the Top Section with hardware in Hardware Set #2, ensuring a flexible gasket has been installed by Mfr. in recess provided in the flange for that purpose. Push 3/8" x 1-3/4" bolt thru lock washer, thru flat washer, thru pre-drilled hole provided in Upper Flume, into pre-inserted nut in Top Section. (Fig. 8). Tighten all connections when there is a smooth top surface at the connection (see IMPORTANT NOTE in step three.)**



Flexible gasket installed by Mfr. between flanges.

Fig. 8

When long and short legs are completely plumb (ensure each leg is vertical by checking each leg at two points 90 deg. from each other), tighten all connections. Note: Slide Step Support System is designed for 16 deg. slope which must be installed correctly for proper functioning of slide. (Fig. 9)



16 degree slope
from vertical

Fig. 9

Step Five: Anchoring to Deck

- Position all foot receivers on deck in the correct location, checking to insure the legs are vertical, then carefully mark the locations of all anchor bolts. If proper care is exercised, drilling of leg anchor bolt holes may be done with leg foot receivers in position; in this case, mark the location of holes for the slanted Step Support anchor bolts before moving slide aside (holes may not be easily drilled with this piece in position due to interference with the steps).
- Move the slide aside, if necessary, to drill the slanted Step Support anchor bolt holes.
- Install Anchor Bolts at correct locations. Anchor bolt thread must protrude 1-1/2 inches above the deck. Use Hardware Set #4.
- Install foot receivers onto deck on anchor bolts previously installed. (Fig. 10)
- Tighten all connections.

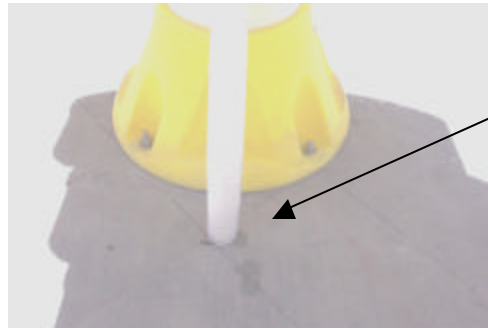


Anchor Bolts must extend 1-1/2" above deck. Holes may be drilled in place for vertical legs, but for slanted column, may be marked, and drilled after slide is moved slightly to the side.

Fig. 10

Step Six: Connect Water Supply System

- **Connect bottom hose to water system as required, using proper connectors (by others) and in-line valve (furnished) as required. (Fig. 11)**



Owner or Installer to provide Stub-Up or water supply as req'd.

Fig. 11

- **Install top hose section, cutting piping to fit as required, and connecting to male adapter which attaches to Top Section. Use PVC primer and glue (not included) as required. (Fig. 12) Use Hardware Set #6.**

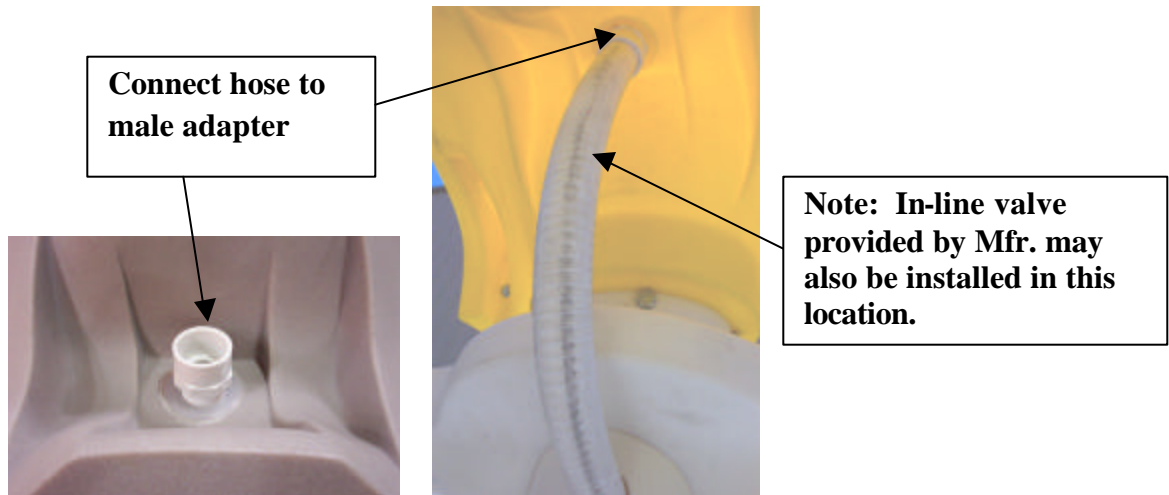


Fig. 12

Step Seven: Finish

- **Install all protective caps at exposed bolts.**
- **Turn water supply on and check water flow.**
- **Clean Slide and dispose of all debris caused by the installation.**

Note: It is recommended that after several days' use, all visible bolted connections be re-tightened as needed.

X-stream Slide Care and Maintenance

1. General Cleaning

- Use nonabrasive Soap and water when possible.
- Review cleaner's label instructions before applying to acrylic surface.
- Avoid harsh chemicals and disinfectants

The following products may safely be used:*

- Chlorox Liquid Comet
 - Windex Formula 409
 - Glass Plus Mr. Clean
 - Soft Scrub Spic and Span Powder
- Calgon Bath Oil Beads**

Do not use:

- Lysol Disinfectant Spray
- Dow Disinfectant Bathroom Cleaner
- Pinesol
- Whitecap
- Lestoil

2. Light Scratches, abrasions, gloss, etc.

- Novus plastic polish (Novus, Inc.)
- Mirror Glaze Professional Formula #17 (Mirror Bright Polish Co., Irvine, CA)
- Permatex Plastic Cleaner #403D (Permatex Co., Kansas City, KS)
- "J-Wax" or "Kit" Automotive Cleaner/Waxes (S.C. Johnson & Son)
- DuPont or Turtlewax "white Polish" automotive polishing compound

Light Scratches: Very light scratches, scuff marks and haze can be hand polished with Permatex Plastic Cleaner or Gel-Gloss. Follow manufacturer's guidelines. Clean cotton cloth works best for applying the polish and buffing.*

*These suggestions and data based on information believed to be reliable, from acrylic manufacturers. They are offered in good faith, but without guarantee, as conditions and methods of use and procedures are beyond our control.