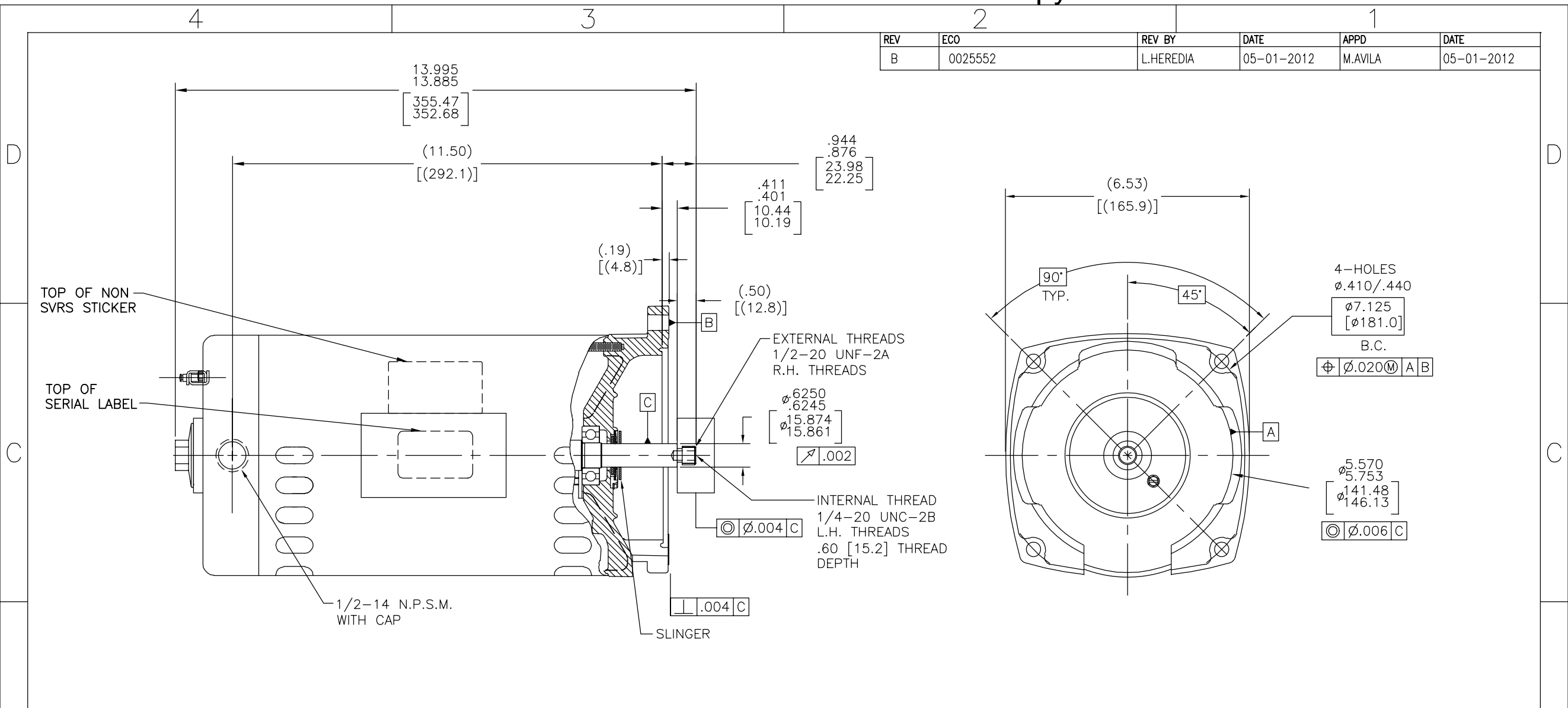


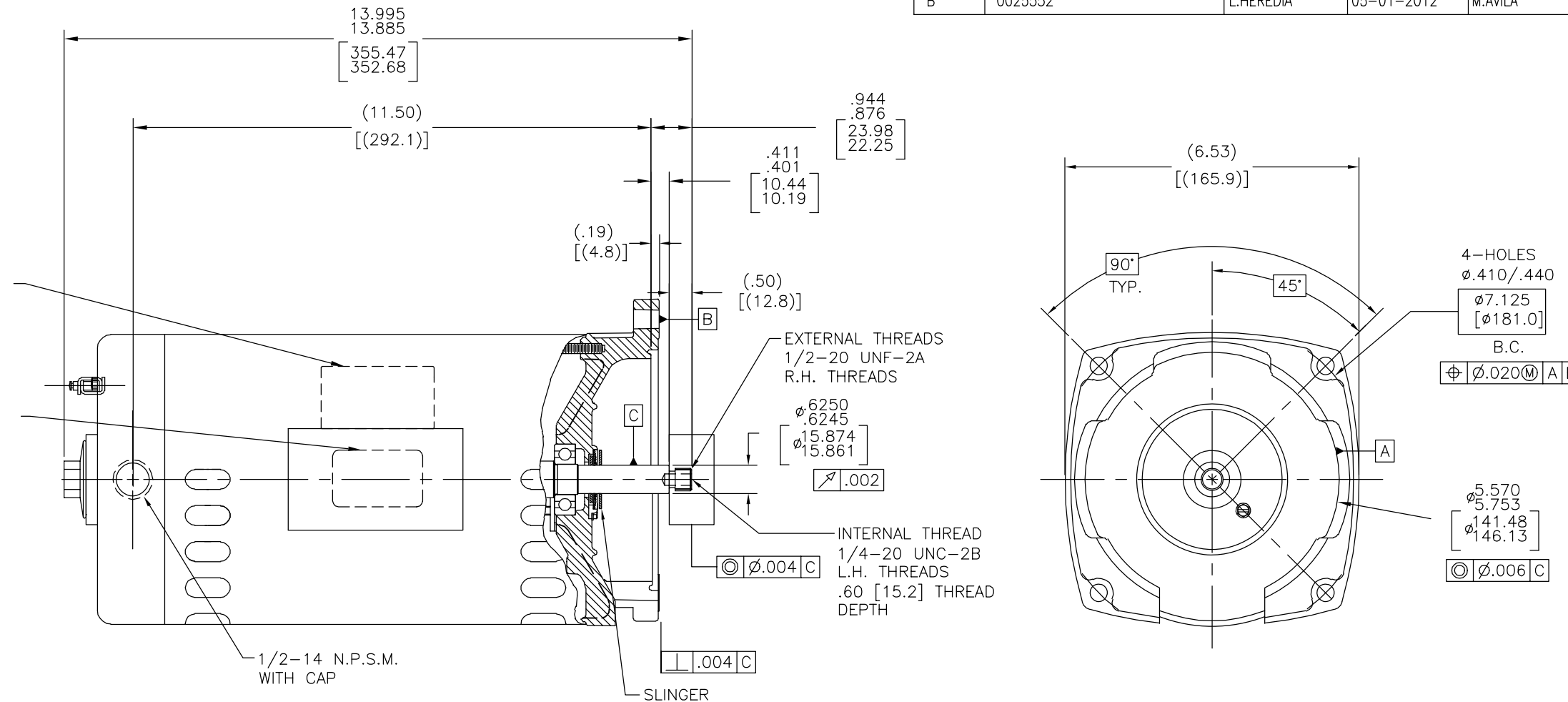
REV	ECO	REV BY	DATE	APPD	DATE
B	0025552	L.HEREDIA	05-01-2012	M.AVILA	05-01-2012



NAMEPLATE DATA	EXTERNAL CONNECTION DIAGRAM	NOTES						
MODEL: 165440 CUST PN: H755 HP: 3.0 SF: 1.15 ROT: RCC RPM: 3450 TYPE: SC CODE: M FORM: KJC FRAME: Y 56 Y VOLTS: 208-230/460 AMPS: SF-9.8-9.6/4.8 MAX AMPS: SF AMPS: PH: 3 HZ: 60 INS: B AMB: 50°C DUTY: CONT ENCLOSURE: ODP	<table border="1"> <tr> <td>LOW VOLTAGE</td> <td>TO REVERSE, INTER-CHANGE ANY TWO LEADS.</td> <td>HIGH VOLTAGE</td> </tr> <tr> <td> 4-BROWN 5-ORANGE 6-BLACK 1-RED 7-PURPLE 2-WHITE 8-GRAY 3-BLUE 9-PINK </td> <td> 4-BROWN 7-PURPLE 5-ORANGE 8-GRAY 6-BLACK 9-PINK 1-RED 2-WHITE 3-BLUE </td> <td> LINE 1 LINE 2 LINE 3 LINE 1 LINE 2 LINE 3 </td> </tr> </table>	LOW VOLTAGE	TO REVERSE, INTER-CHANGE ANY TWO LEADS.	HIGH VOLTAGE	4-BROWN 5-ORANGE 6-BLACK 1-RED 7-PURPLE 2-WHITE 8-GRAY 3-BLUE 9-PINK	4-BROWN 7-PURPLE 5-ORANGE 8-GRAY 6-BLACK 9-PINK 1-RED 2-WHITE 3-BLUE	LINE 1 LINE 2 LINE 3 LINE 1 LINE 2 LINE 3	1. FOR THREADED SHAFT EXT. MATING PARTS SHOULD BE RELIEVED ONE THREAD TO CLEAR FILLET 2. END PLAY NOT TO EXCEED .010 MEASURED WITH NO THRUST 3. ALL DIMENSIONS SHOWN IN PARENTHESIS ARE REFERENCE DIMENSIONS. 4. FINISH PAINT TO BE BLACK
LOW VOLTAGE	TO REVERSE, INTER-CHANGE ANY TWO LEADS.	HIGH VOLTAGE						
4-BROWN 5-ORANGE 6-BLACK 1-RED 7-PURPLE 2-WHITE 8-GRAY 3-BLUE 9-PINK	4-BROWN 7-PURPLE 5-ORANGE 8-GRAY 6-BLACK 9-PINK 1-RED 2-WHITE 3-BLUE	LINE 1 LINE 2 LINE 3 LINE 1 LINE 2 LINE 3						

PERFORMANCE CURVE 14817921	APPROVED SAMPLE CSA	GEOMETRIC CHARACTERISTICS & SYMBOLS □ FLATNESS — STRAIGHTNESS ∟ ANGULARITY ⊥ PERPENDICULARITY (SQUARENESS) // PARALLELISM ○ ROUNDNESS (CIRCULARITY) ∅ CYLINDRICITY △ PROFILE OF ANY SURFACE ∩ PROFILE OF ANY LINE ↑ RUNOUT ⊕ TRUE POSITION ⊙ CONCENTRICITY ≡ SYMMETRY	UNLESS OTHERWISE SPECIFIED DIM. TOLERANCES ARE AS FOLLOWS: INCH X XX XXX XXXX mm ±0.1 ±0.02 ±0.005 ±0.0005 ANG. ±.50 DEG REMOVE BURRS & BREAK SHARP EDGES: INCH .003-.015 mm 0.1-0.4 CORNER FILLETS TO: INCH .020 mm 0.5 MACHINE SURFACES: INCH 125 mm 3.2	DR BY: CHERRY.Z 11-15-2010 APPD: BAOCHENG.S 11-15-2010 THIRD ANGLE PROJECTION EDS DATE 11-11-2011 FORMAT REV G	REGAL-BELOIT CORPORATION DESCRIPTION: MODEL-PFHP-56FR OUTLINE SIZE C DWG NO H755 SCALE NONE SHEET 1
UL COMPONENT FILE# CCN# FILE# GUIDE# E44549 PRGY2 LR4642 4211-01	CUSTOMER DISTRIBUTION		METRIC DIMS. SHOWN IN [BRACKETS]	CONFIDENTIAL: THIS DRAWING AND ITS INFORMATION ARE THE EXCLUSIVE AND CONFIDENTIAL PROPERTY OF REGAL-BELOIT CORPORATION AND ARE NOT TO BE DISCLOSED, DUPLICATED, DISTRIBUTED OR OTHERWISE USED WITHOUT THE WRITTEN CONSENT OF REGAL-BELOIT CORPORATION. -ALL RIGHTS RESERVED.	

REVISION:	ECO	REVISADO POR:	FECHA:	APROBADO POR:	FECHA:
B	0025552	L.HEREDIA	05-01-2012	M.AVILA	05-01-2012



NAMEPLATE DATA	EXTERNAL CONNECTION DIAGRAM	NOTES			
MODEL: 165440 CUST PN: H755 HP: 3.0 SF: 1.15 ROT: RCC RPM: 3450 TYPE: SC CODE: M FORM: KJC FRAME: Y 56 Y VOLTS: 208-230/460 AMPS: SF-9.8-9.6/4.8 MAX AMPS: SF AMPS: PH: 3 HZ: 60 INS: B AMB: 50°C DUTY: CONT ENCLOSURE: ODP	<table border="1"> <tr> <td> LOW VOLTAGE 4-BROWN 5-ORANGE 6-BLACK 1-RED 7-PURPLE 2-WHITE 8-GRAY 3-BLUE 9-PINK </td> <td> TO REVERSE, INTER-CHANGE ANY TWO LINE LEADS. </td> <td> HIGH VOLTAGE 4-BROWN 7-PURPLE 5-ORANGE 8-GRAY 6-BLACK 9-PINK 1-RED 2-WHITE 3-BLUE </td> </tr> </table>	LOW VOLTAGE 4-BROWN 5-ORANGE 6-BLACK 1-RED 7-PURPLE 2-WHITE 8-GRAY 3-BLUE 9-PINK	TO REVERSE, INTER-CHANGE ANY TWO LINE LEADS.	HIGH VOLTAGE 4-BROWN 7-PURPLE 5-ORANGE 8-GRAY 6-BLACK 9-PINK 1-RED 2-WHITE 3-BLUE	1. FOR THREADED SHAFT EXT. MATING PARTS SHOULD BE RELIEVED ONE THREAD TO CLEAR FILLET 2. END PLAY NOT TO EXCEED .010 MEASURED WITH NO THRUST 3. ALL DIMENSIONS SHOWN IN PARENTHESIS ARE REFERENCE DIMENSIONS. 4. FINISH PAINT TO BE BLACK
LOW VOLTAGE 4-BROWN 5-ORANGE 6-BLACK 1-RED 7-PURPLE 2-WHITE 8-GRAY 3-BLUE 9-PINK	TO REVERSE, INTER-CHANGE ANY TWO LINE LEADS.	HIGH VOLTAGE 4-BROWN 7-PURPLE 5-ORANGE 8-GRAY 6-BLACK 9-PINK 1-RED 2-WHITE 3-BLUE			

PERFORMANCE CURVE	APPROVED SAMPLE	CARACTERISTICAS DE GEOMETRIA Y SIMBOLOS □ PLANICIDAD — RECTITUD ∠ ANGULARIDAD ⊥ PERPENDICULARIDAD (A ESQUADRA) // PARALELISMO ○ REDONDEZ (CIRCULARIDAD) ∅ CILINDRICIDAD △ PERFIL DE CUALQUIER SUPERFICIE ∩ PERFIL DE CUALQUIER LINEA ↑ VARIACION ⊕ POSICION REAL ⊙ CONCENTRICIDAD = SIMETRIA	DIBUJADO POR: CHERRY.Z 11-15-2010 APROBADO POR: BAOCHENG.S 11-15-2010 TERCER ANGULO DE PROYECCION	REGAL-BELOIT CORPORATION DESCRIPCION: MODEL-PFHP-56FR OUTLINE TAMAÑO: C NUMERO DE DIBUJO: H755 ESCALA: NONE HOJA: 1
14817921	CSA		A MENOS QUE SE ESPECIFIQUE DE OTRA MANERA, LAS TOLERANCIAS DE LAS DIMS; SON LAS SIGUIENTES: PULG ±.1 ±.02 ±.005 ±.0005 mm ±0.5 ±0.13 ±0.013 ANG. ±.50 GRADOS ELIMINAR REBABAS Y ORILLAS FILOSAS DEL BORDE. PULG .003-.015 mm 0.1-0.4 FILETEAR ESQUINA: PULG .020 mm 0.5 MAQUINAR SUPERFICIES PULG 125 mm 3.2 DIMS METRICAS MOSTRADAS [PARENTESIS]	

