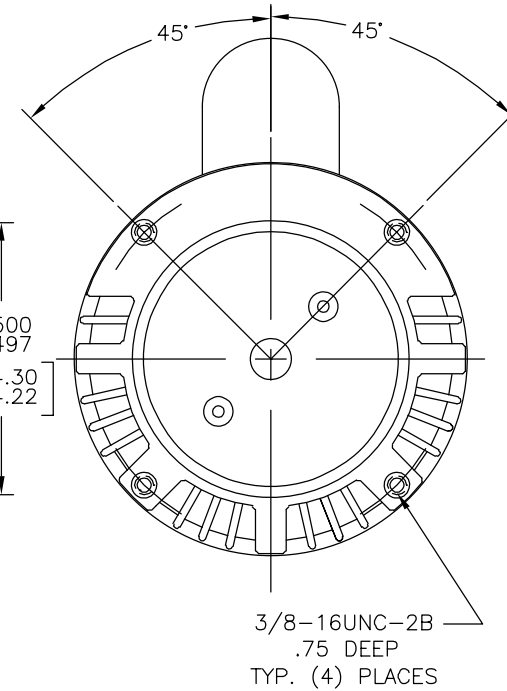
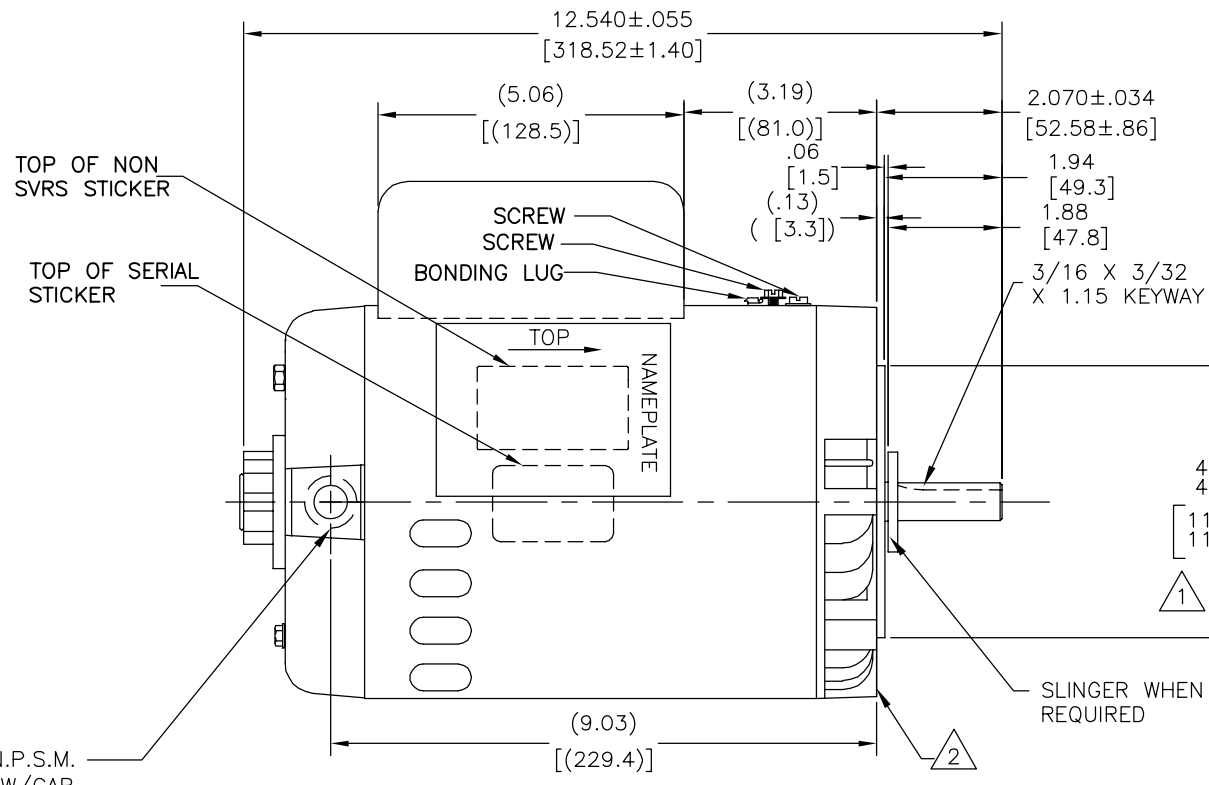
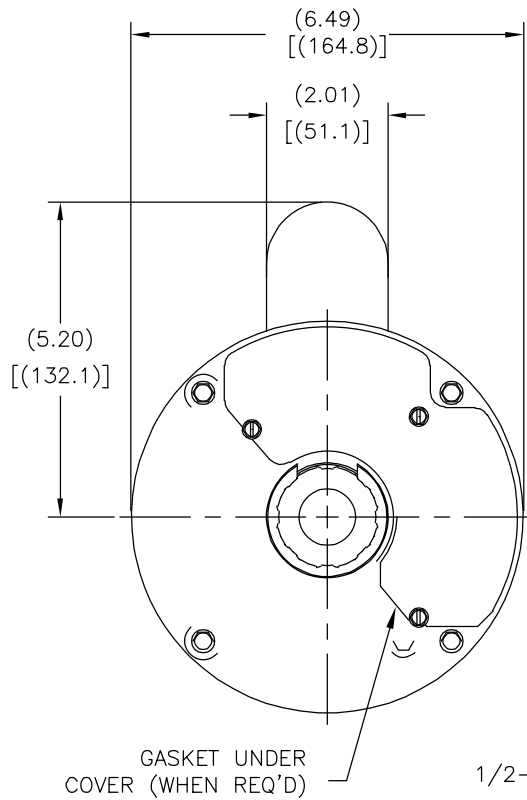


REV	ECO	REV BY	DATE	APPD	DATE
C	0014517	TZ	10-15-2010	BS	10-15-2010



NAMEPLATE DATA	EXTERNAL CONNECTION DIAGRAM	NOTES
MODEL: 177061 CUST PN: B976 HP: 1.5-2.0 SF: 1.30 ROT: CCWPE RPM: 3450/1725 TYPE: CXPM CODE: G FORM: FRAME: X 56 C VOLTS: 230 AMPS: MAX AMPS: SF AMPS: 8.9/3.1 PH: 1 HZ: 60 INS: B AMB: 40°C DUTY: CONT ENCLOSURE: ODP THERMALLY PROTECTED		1. PILOT DIAMETER IS CONCENTRIC WITH SHAFT CENTERLINE WITHIN .004 T.I.R. 2. FACE OF MOUNTING FLANGE IS PERPENDICULAR TO SHAFT CENTERLINE WITHIN .004 T.I.R. 3. SHAFT RUNOUT NOT TO EXCEED .002 T.I.R. 4. FOR THREADED SHAFT EXT. MATING PARTS SHOULD BE RELIEVED ON THREAD TO CLEAR FILLET.

PERFORMANCE CURVE 16331714	APPROVED SAMPLE CSA	GEOMETRIC CHARACTERISTICS & SYMBOLS □ FLATNESS - STRAIGHTNESS ⊥ ANGULARITY ⊥ PERPENDICULARITY (SQUARENESS) // PARALLELISM ○ ROUNDNESS (CIRCULARITY) ∅ CYLINDRICITY △ PROFILE OF ANY SURFACE ∩ PROFILE OF ANY LINE ↑ RUNOUT ⊕ TRUE POSITION ⊙ CONCENTRICITY = SYMMETRY	UNLESS OTHERWISE SPECIFIED DIM. TOLERANCES ARE AS FOLLOWS: INCH X XX XXX XXXX ±.1 ±.02 ±.005 ±.0005 mm ±0.5 ±0.13 ±0.013 ANG. ±.50 DEG REMOVE BURRS & BREAK SHARP EDGES: INCH .003-.015 mm 0.1-0.4 CORNER FILLETS TO: INCH .020 mm 0.5 MACHINE SURFACES: INCH 125 mm 3.2 METRIC DIMS. SHOWN IN [BRACKETS]	DR BY: TOM ZHZO 07-10-2006 APPD: TDT 07-11-2006 THIRD ANGLE PROJECTION EDS DATE 02-22-2008 FORMAT REV F CONFIDENTIAL: THIS DRAWING AND ITS INFORMATION ARE THE EXCLUSIVE AND CONFIDENTIAL PROPERTY OF A.O. SMITH CORP. AND ARE NOT TO BE DISCLOSED, DUPLICATED, DISTRIBUTED OR OTHERWISE USED WITHOUT THE WRITTEN CONSENT OF A.O. SMITH CORP. -ALL RIGHTS RESERVED. ASME Y14.5M 1994
-------------------------------	------------------------	--	--	--

		ELECTRICAL PRODUCTS COMPANY A DIVISION OF A. O. SMITH CORPORATION
DESCRIPTION OUTLINE		
SIZE C	DWG NO B976	
SCALE NONE		SHEET 1

4

3

2

1

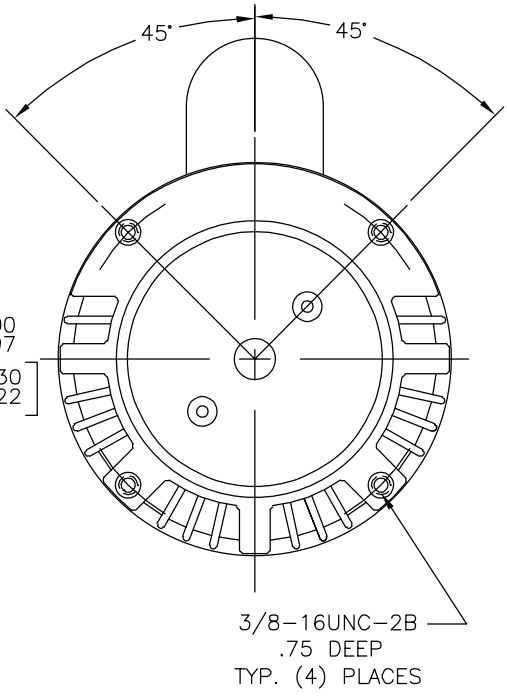
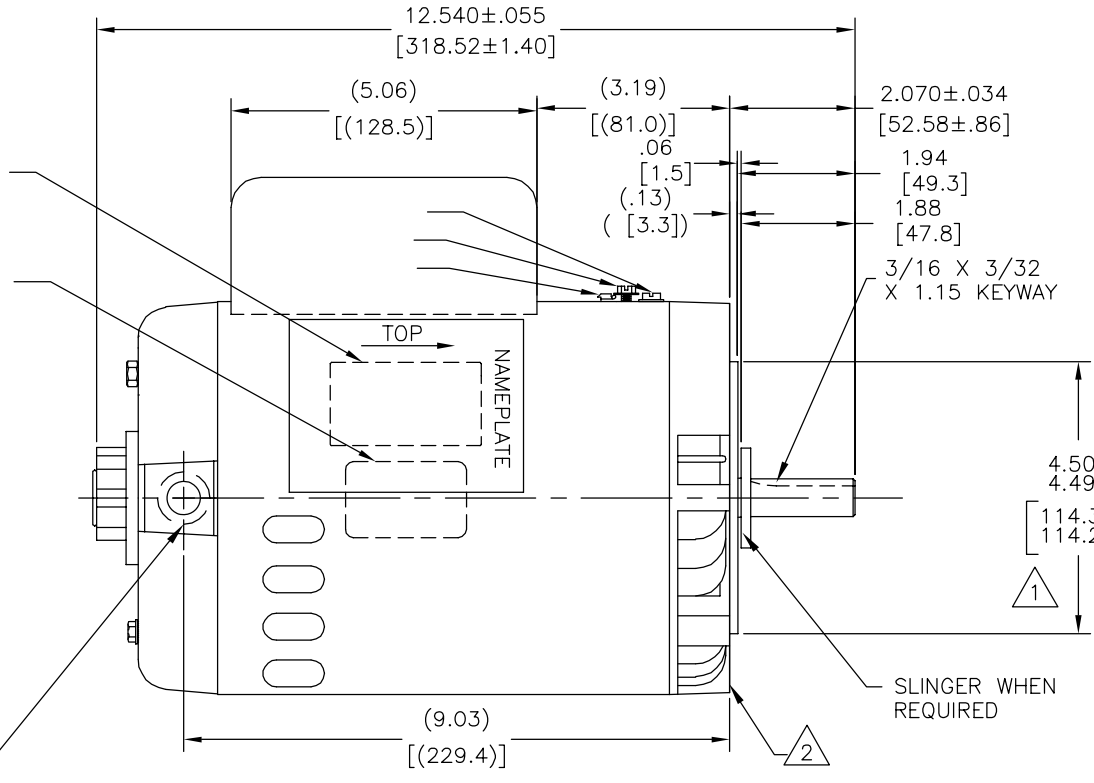
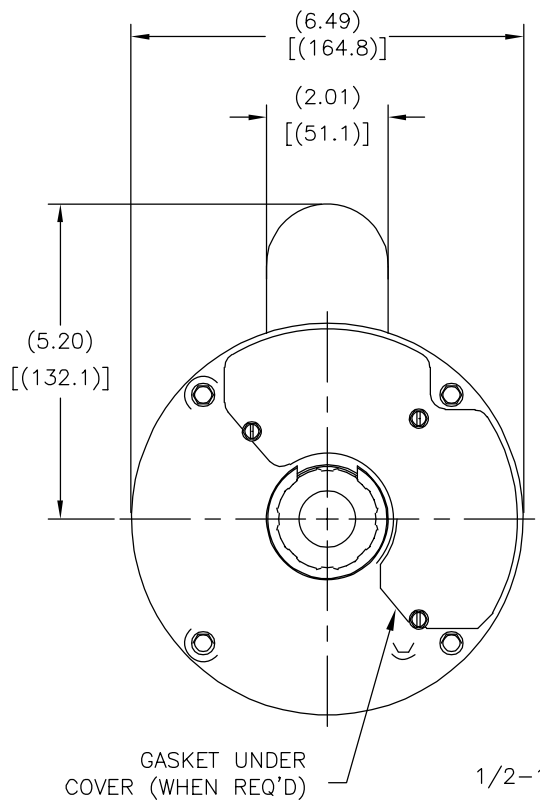
4

3

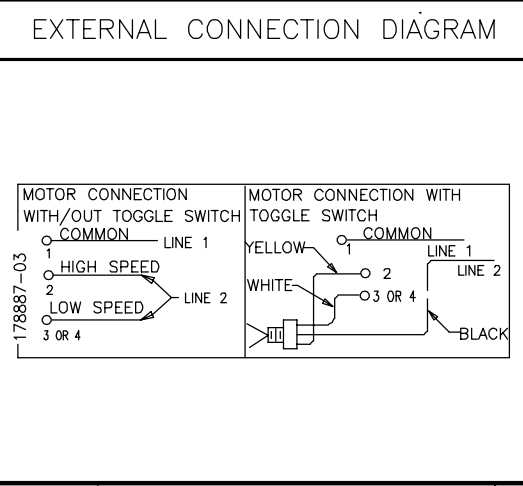
2

1

REVISION:	ECO	REVISADO POR:	FECHA:	APROBADO POR:	FECHA:
C	0014517	TZ	10-15-2010	BS	10-15-2010



NAMEPLATE DATA	
MODEL: 177061	
CUST PN: B976	
HP: 1.5-2.0	SF: 1.30
ROT: CCWPE	
RPM: 3450/1725	
TYPE: CXPM	CODE: G
FORM:	FRAME: X 56 C
VOLTS: 230	
AMPS:	
MAX AMPS:	
SF AMPS: 8.9/3.1	
PH: 1	HZ: 60
INS: B	AMB: 40°C
DUTY: CONT	
ENCLOSURE: ODP	
THERMALLY PROTECTED	



- NOTES
- ▲ PILOT DIAMETER IS CONCENTRIC WITH SHAFT CENTERLINE WITHIN .004 T.I.R.
 - ▲ FACE OF MOUNTING FLANGE IS PERPENDICULAR TO SHAFT CENTERLINE WITHIN .004 T.I.R.
 - 3. SHAFT RUNOUT NOT TO EXCEED .002 T.I.R.
 - 4. FOR THREADED SHAFT EXT. MATING PARTS SHOULD BE RELIEVED ON THREAD TO CLEAR FILLET.

PERFORMANCE CURVE	APPROVED SAMPLE
16331714	
UL COMPONENT	CSA
FILE#	CCN#
PENDING	PENDING
CUSTOMER	

FILE#	CCN#	FILE#	GUIDE#
PENDING	PENDING	LR4642	4211-01

CARACTERISTICAS DE GEOMETRIA Y SIMBOLOS

- PLANICIDAD
- RECTITUD
- ∠ ANGULARIDAD
- ⊥ PERPENDICULARIDAD (A ESCUADRA)
- // PARALELISMO
- REDONDEZ (CIRCULARIDAD)
- ⊘ CILINDRICIDAD
- △ PERFIL DE CUALQUIER SUPERFICIE
- ∩ PERFIL DE CUALQUIER LINEA
- ∧ VARIACION
- ⊕ POSICION REAL
- ⊙ CONCENTRICIDAD
- = SIMETRIA

A MENOS QUE SE ESPECIFIQUE DE OTRA MANERA, LAS TOLERANCIAS DE LAS DIMS; SON LAS SIGUIENTES:

PULG ±.1 ±.02 ±.005 ±.0005

mm ±0.5 ±0.13 ±0.013

ANG. ±.50 GRADOS

ELIMINAR REBABAS Y ORILLAS FILOSAS DEL BORDE.

PULG .003-.015 mm 0.1-0.4

FILETEAR ESQUINA: PULG .020 mm 0.5

MAQUINAR SUPERFICIES

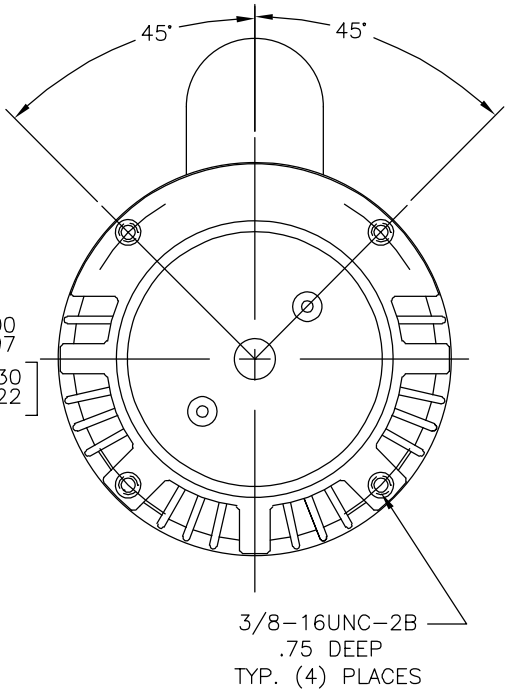
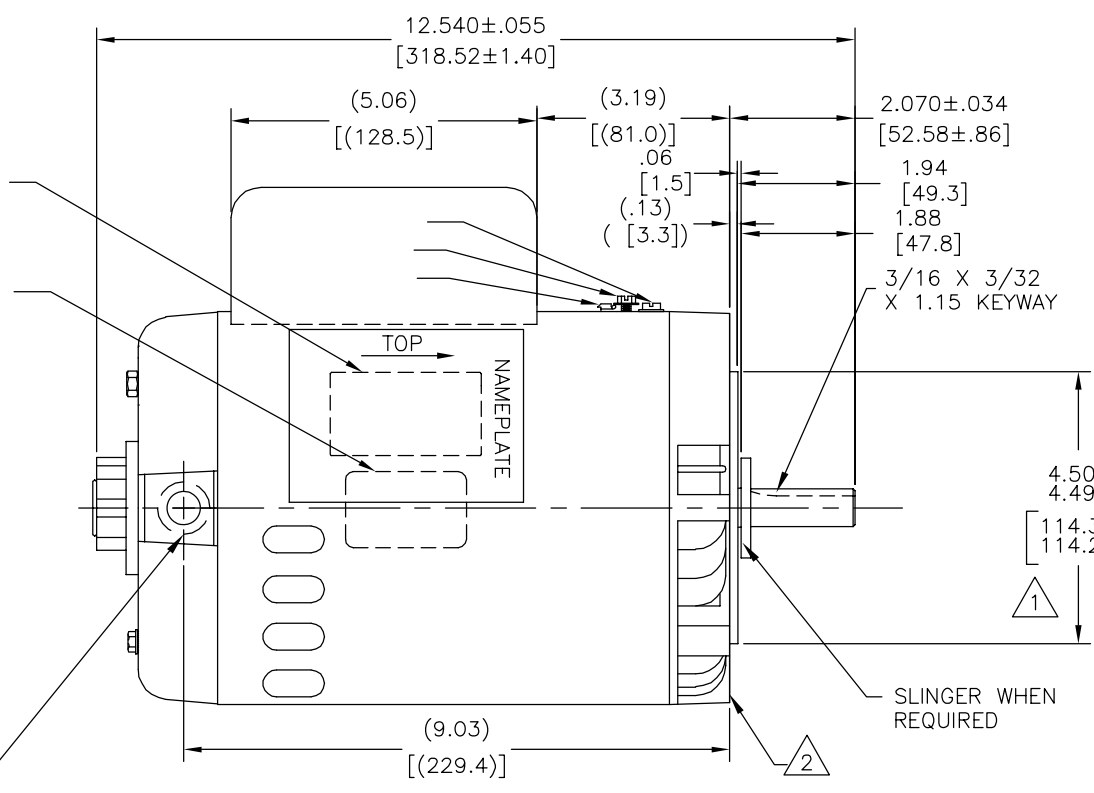
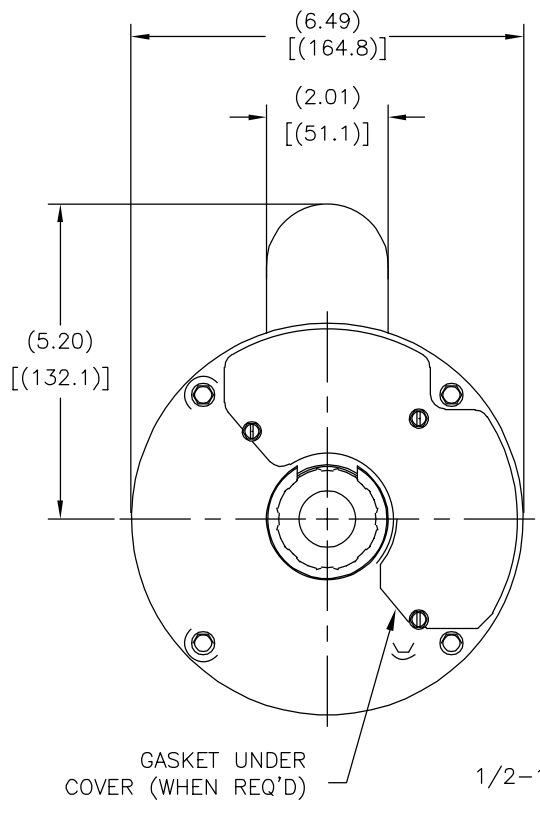
PULG 125 mm 3.2

DIMS METRICAS MOSTRADAS [PARENTESIS]

DIBUJADO POR:	07-10-2006
TOM ZHZO	
APROBADO POR:	07-11-2006
TDT	
TERCER ANGULO DE PROYECCION	FECHA EDS: 02-22-2008
	REV. FORMATO: F
CONFIDENCIAL: ESTE DIBUJO Y SU INFORMACION SON PROPIEDAD DE USO EXCLUSIVO Y CONFIDENCIAL DE A.O.SMITH CORP. Y NO DEBERAN SER REVELADOS, DUPLICADOS, DISTRIBUIDOS O USARSE DE OTRA MANERA SIN EL CONSENTIMIENTO ESCRITO DE A.O. SMITH CORP.	
-TODOS LOS DERECHOS RESERVADOS.ASME Y14.5M 1994	

ELECTRICAL PRODUCTS COMPANY	
A DIVISION OF A. O. SMITH CORPORATION	
DESCRIPCION: OUTLINE	
TAMAÑO: C	NUMERO DE DIBUJO: B976
ESCALA: NONE	HOJA: 1

版本	ECO	编制	日期	批准	日期
C	0014517	TZ	10-15-2010	BS	10-15-2010



NAMEPLATE DATA	EXTERNAL CONNECTION DIAGRAM	NOTES
MODEL: 177061 CUST PN: B976 HP: 1.5-2.0 SF: 1.30 ROT: CCWPE RPM: 3450/1725 TYPE: CXPM CODE: G FORM: FRAME: X 56 C VOLTS: 230 AMPS: MAX AMPS: SF AMPS: 8.9/3.1 PH: 1 HZ: 60 INS: B AMB: 40°C DUTY: CONT ENCLOSURE: ODP THERMALLY PROTECTED		<ul style="list-style-type: none"> △ PILOT DIAMETER IS CONCENTRIC WITH SHAFT CENTERLINE WITHIN .004 T.I.R. △ FACE OF MOUNTING FLANGE IS PERPENDICULAR TO SHAFT CENTERLINE WITHIN .004 T.I.R. 3. SHAFT RUNOUT NOT TO EXCEED .002 T.I.R. 4. FOR THREADED SHAFT EXT. MATING PARTS SHOULD BE RELIEVED ON THREAD TO CLEAR FILLET.

PERFORMANCE CURVE	APPROVED SAMPLE
16331714	CSA
UL COMPONENT	FILE#
PENDING	PENDING
CUSTOMER	LR4642

FILE#	CCN#	FILE#	GUIDE#
PENDING	PENDING	LR4642	4211-01

形位公差	除另有注明
□ 平面度	尺寸公差如下:
— 直线度	英寸 ±.1 XX ±.02 XXX ±.005 XXXX ±.0005
∠ 倾斜度	毫米 ±0.5 ±0.13 ±0.013
⊥ 垂直度	角度 ±.50 度
∥ 平行度	清理毛刺和尖棱
○ 圆度	英寸 .003-.015 毫米 0.1-0.4
⊙ 圆柱度	内圆角
⌒ 面轮廓度	英寸 .020 毫米 0.5
⌒ 线轮廓度	表面粗糙度
⌒ 圆跳动	英制 125 米制 3.2
⊕ 位置度	米制尺寸显示在 []
⊖ 同轴度	
≡ 对称度	

绘图: TOM ZHZO	07-10-2006
批准: TDT	07-11-2006
第三角投影	图纸格式发布日期 02-22-2008
	图纸格式版本 F
机密: 本图纸及相关信息所有权归A. O. SMITH公司所有。未经A. O. SMITH公司书面授权, 不得泄露、复制、传播或作其他用途。—版权所有	
ASME Y14.5M 1994	

ELECTRICAL PRODUCTS COMPANY <small>A DIVISION OF A. O. SMITH CORPORATION</small>	
名称: OUTLINE	
图幅: C	图号: B976
比例: NONE	页号: 1

4 3 2 1

4 3 2 1