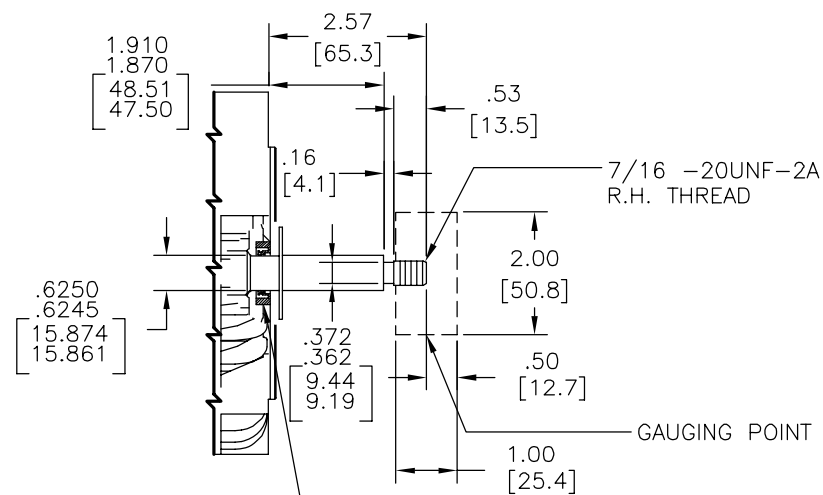
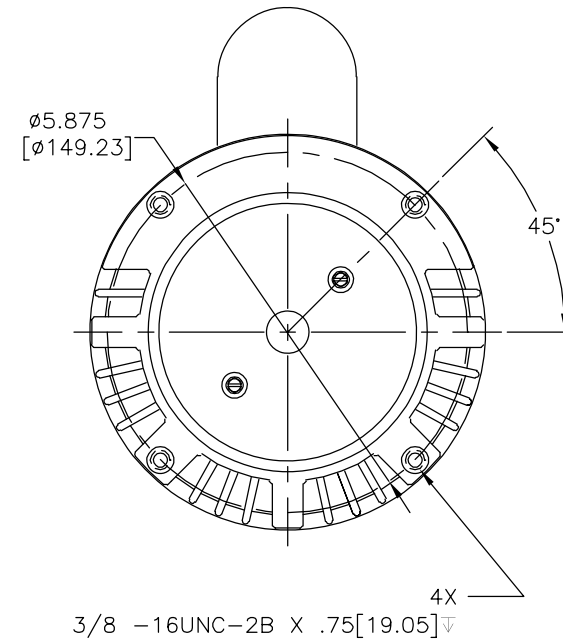
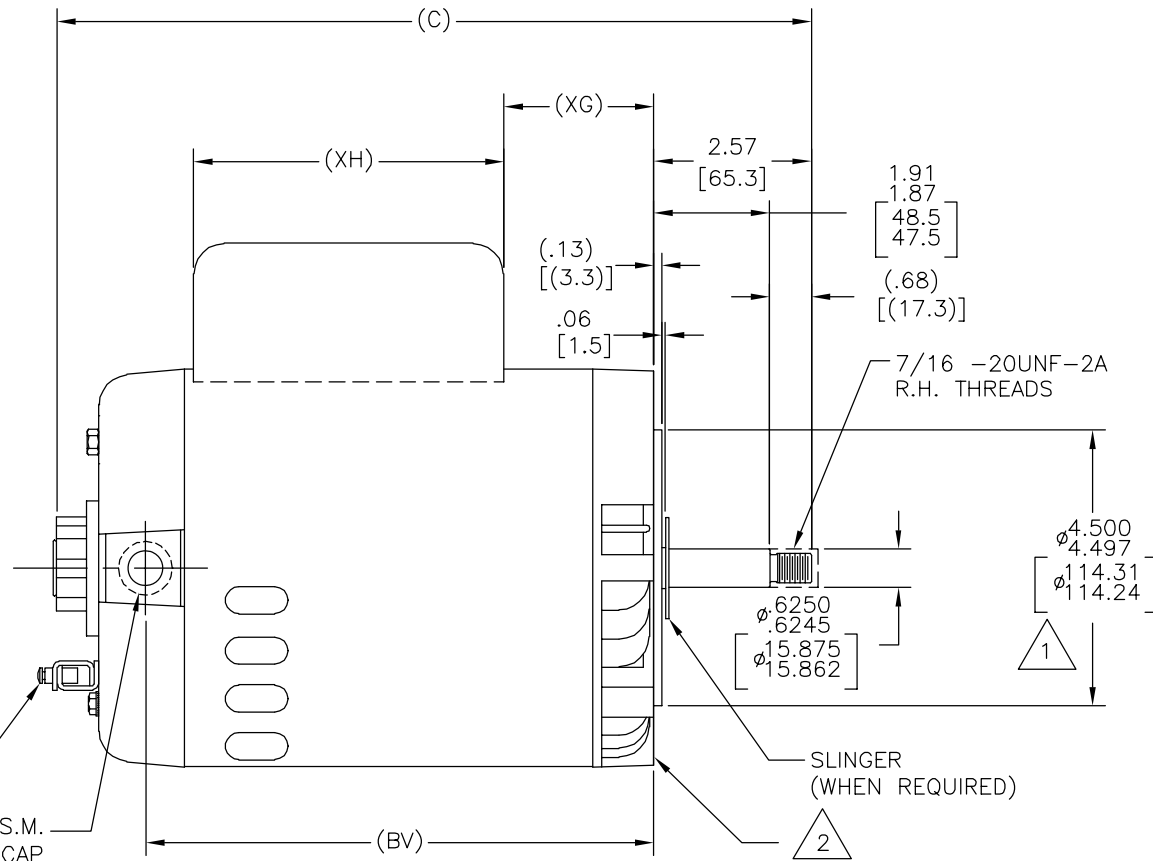
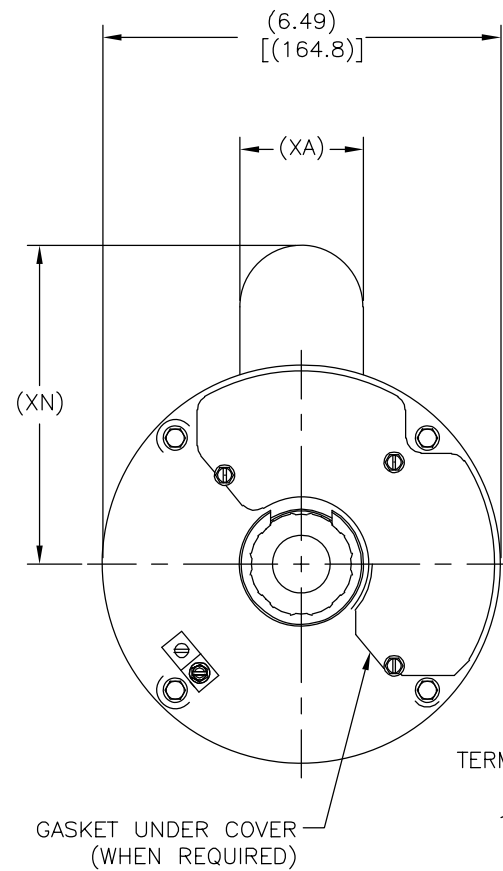


PART NO.	TYPE	FRAME	(C)	(BV)	(XA)	(XG)	(XH)	(XN)
195003-01	CXPM	X56J	13.05[331.4]	9.03[229.4]	2.01[51.1]	3.19[81.0]	5.06[128.5]	5.20[132.1]
195003-02	CXPM	P56J	13.55[344.2]	9.53[242.1]	2.01[51.1]	3.69[93.7]	5.06[128.5]	5.20[132.1]
<del>195003-03</del>	<del>CXPM</del>	<del>U56J</del>	<del>12.55[318.8]</del>	<del>8.53[216.7]</del>	<del>2.01[51.1]</del>	<del>2.69[68.3]</del>	<del>5.06[128.5]</del>	<del>5.20[132.1]</del>

REV	ECO	REV BY	DATE	APPD	DATE
E	ECO-0008802	IVAN LOPEZ	01-04-2010	D.JUAREZ	01-04-2010

ALL DIMENSIONS SHOWN IN PARENTHESIS ARE REFERENCE DIMENSIONS. ALL OTHER DIMENSIONS ARE TOLERANCED PER THE FOLLOWING CHART UNLESS OTHERWISE SPECIFIED.

"C" DIM. = +/- .055[1.40]  
 SHAFT EXT. = +/- .034[.86]  
 LEAD LENGTHS = +/- 1.00[25.40]  
 EXTENDED  
 THRU-BOLTS = +/- .050[1.27]  
 ANGULAR DIMS. = +/- 2'



NOTES:

1. PILOT DIAMETER IS CONCENTRIC WITH SHAFT CENTERLINE WITHIN .004[.10] T.I.R.
2. FACE OF MOUNTING FLANGE IS PERPENDICULAR TO SHAFT CENTERLINE WITHIN .004[.10] T.I.R.
3. SHAFT RUNOUT NOT TO EXCEED .002[.05] T.I.R.
4. FOR THREADED SHAFT EXT. MATING PARTS SHOULD BE RELIEVED ON THREAD TO CLEAR FILLET.
5. FOR THREADED SHAFT. EXT. ECCENTRICITY OF THREADED PORTION OF SHAFT IS HELD WITHIN .004[.10] TOTAL GAGE READING WITH THE INDICATOR ON O.DO OF GROUND RING GAGE AS SHOWN. THE GAGE BEING STATIONARY WITH RESPECT TO THE ROTOR.
6. END PLAY NOT TO EXCEED .010[.25] MEASURED WITH NO THRUST.

INTERNAL EXCLUDER SEAL

GEOMETRIC CHARACTERISTICS & SYMBOLS

- ▭ FLATNESS
- STRAIGHTNESS
- ∠ ANGULARITY
- ⊥ PERPENDICULARITY (SQUARENESS)
- ∥ PARALLELISM
- ROUNDNESS (CIRCULARITY)
- ⊘ CYLINDRICITY
- ⌒ PROFILE OF ANY SURFACE
- ⌒ PROFILE OF ANY LINE
- ↗ RUNOUT
- ⊕ TRUE POSITION
- ◎ CONCENTRICITY
- ≡ SYMMETRY

UNLESS OTHERWISE SPECIFIED DIM. TOLERANCES ARE AS FOLLOWS:

INCH	±.1	±.02	±.005	±.0005
mm	±0.5	±0.13	±0.013	

ANG. ±.50 DEG  
 REMOVE BURRS & BREAK SHARP EDGES:  
 INCH .003-.015 mm 0.1-0.4  
 CORNER FILLETS TO:  
 INCH .020 mm 0.5  
 MACHINE SURFACES:  
 INCH 125 mm 3.2  
 METRIC DIMS. SHOWN IN [BRACKETS]

DR BY:

APPD:

THIRD ANGLE PROJECTION

EDS DATE 02-22-2008  
 FORMAT REV F

CONFIDENTIAL: THIS DRAWING AND ITS INFORMATION ARE THE EXCLUSIVE AND CONFIDENTIAL PROPERTY OF A.O. SMITH CORP. AND ARE NOT TO BE DISCLOSED, DUPLICATED, DISTRIBUTED OR OTHERWISE USED WITHOUT THE WRITTEN CONSENT OF A.O. SMITH CORP.  
 -ALL RIGHTS RESERVED. ASME Y14.5M 1994

**ACSmith** **ELECTRICAL PRODUCTS COMPANY**  
 Innovation has a name. A DIVISION OF A. O. SMITH CORPORATION

DESCRIPTION: **OUTLINE**

SIZE: C DWG NO: 195003

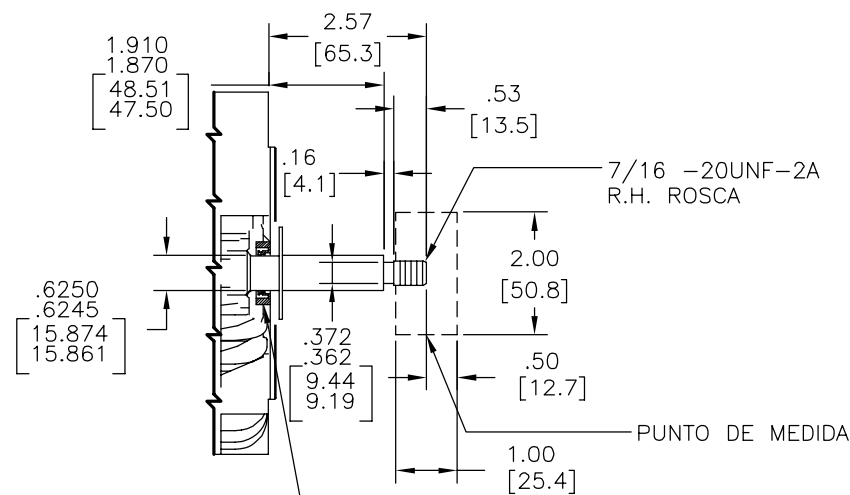
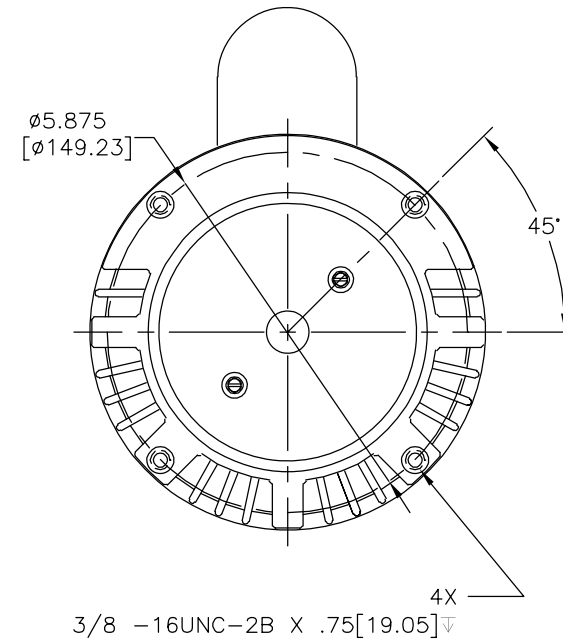
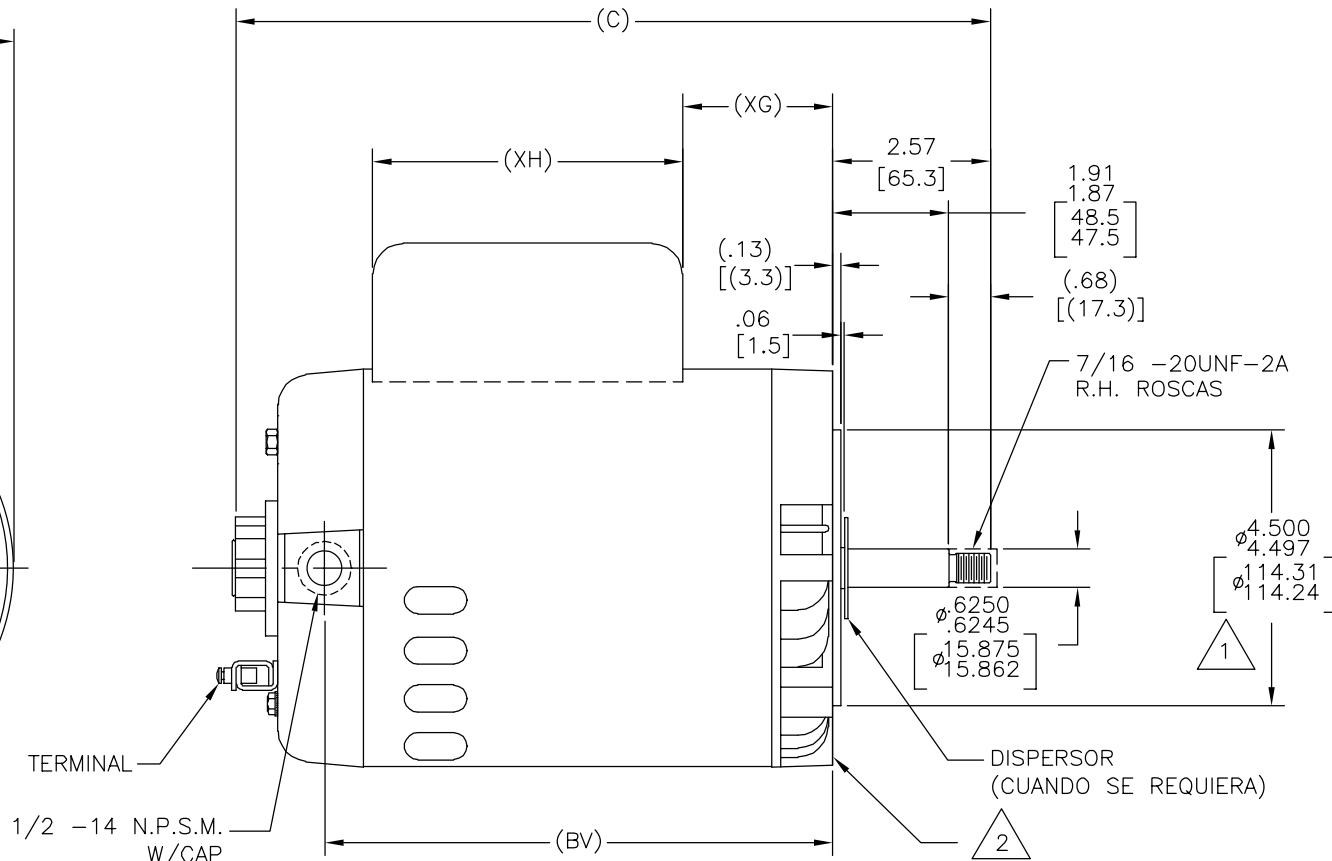
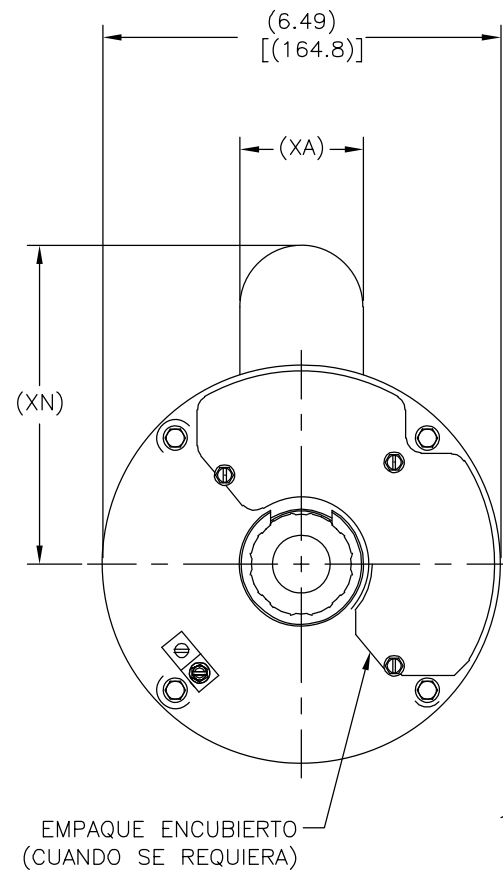
SCALE: NONE SHEET: 1

NO. DE PARTE	TIPO	CARCAZA	(C)	(BV)	(XA)	(XG)	(XH)	(XN)
195003-01	CXPM	X56J	13.05[331.4]	9.03[229.4]	2.01[51.1]	3.19[81.0]	5.06[128.5]	5.20[132.1]
195003-02	CXPM	P56J	13.55[344.2]	9.53[242.1]	2.01[51.1]	3.69[93.7]	5.06[128.5]	5.20[132.1]
195003-03	CXPM	U56J	12.55[318.8]	8.53[216.7]	2.01[51.1]	2.69[68.3]	5.06[128.5]	5.20[132.1]

REVISION: ECO	REVISADO POR: IVAN LOPEZ	FECHA: 01-04-2010	APROBADO POR: D.JUAREZ	FECHA: 01-04-2010
E	ECO-0008802			

TODAS LAS DIMENSIONES EN PARENTESIS SON DE REFERENCIA. TODAS LAS OTRAS DIMENSIONES SON TOLERANCIAS ESPECIFICADAS EN LA SIGUIENTE TABLA, A MENOS QUE SE ESPECIFIQUE DE OTRA MANERA

DIM. "C" = .055[1.40]  
 EXT. DE FLECHA = +/- .034[.86]  
 LONG. DE CABLES = +/- 1.00[25.40]  
 EXTENDIDOS  
 TORNILLOS = +/- .050[1.27]  
 DIM. ANGULARES = +/- 2'



NOTAS:

- EL DIAMETRO GUIA ES CONCENTRICO CON LA  $\perp$  DE LA FLECHA DENTRO DE .004[.10]L.T.I.
- LA CARA DEL REBORDE DE MONTAJE ES PERPENDICULAR A LA  $\perp$  DE LA FLECHA DENTRO DE .004[.10] L.T.I.
- JUEGO AXIAL MAXIMO NO EXEDERA DE .002[.05] L.T.I.
- PARA EXTENSION ROSCADA DE FLECHA .PARTES COINCIDENTES DEBEN ENSAMBLAR LIBRES EN LA ROSCA
- PARA EXTENSION DE FLECHA ROSCADA LA EXCENTRICIDAD DE UNA PORSION DE LA FLECHA ROSCADA ESTA SOSTENIDA DENTRO DE .004[.10] MEDIDA TOTAL LEYENDO CON EL INDICADOR EN 0.00 DE ANILLO DE TIERRA COMO SE MUESTRA. LA MEDIDA COMIENZA ESTACIONARIA RESPECTO AL ROTOR.
- JUEGO AXIAL NO EXCEDERA DE .010[.25] MEDIDO SIN PRESIONAR.

EXCLUIR SELLO INTERNO

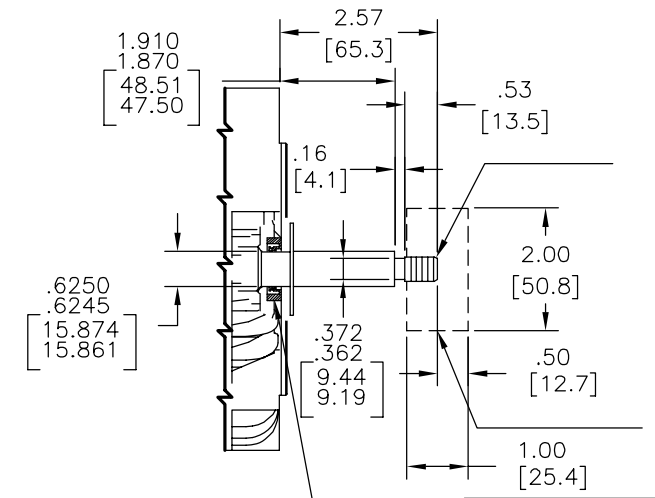
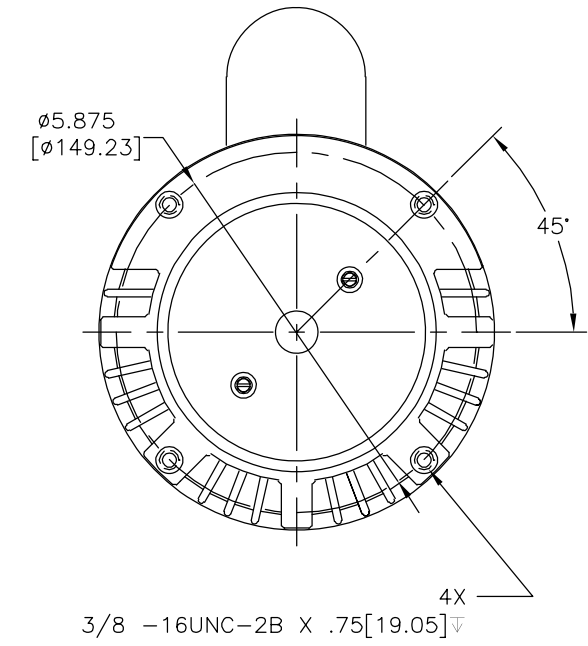
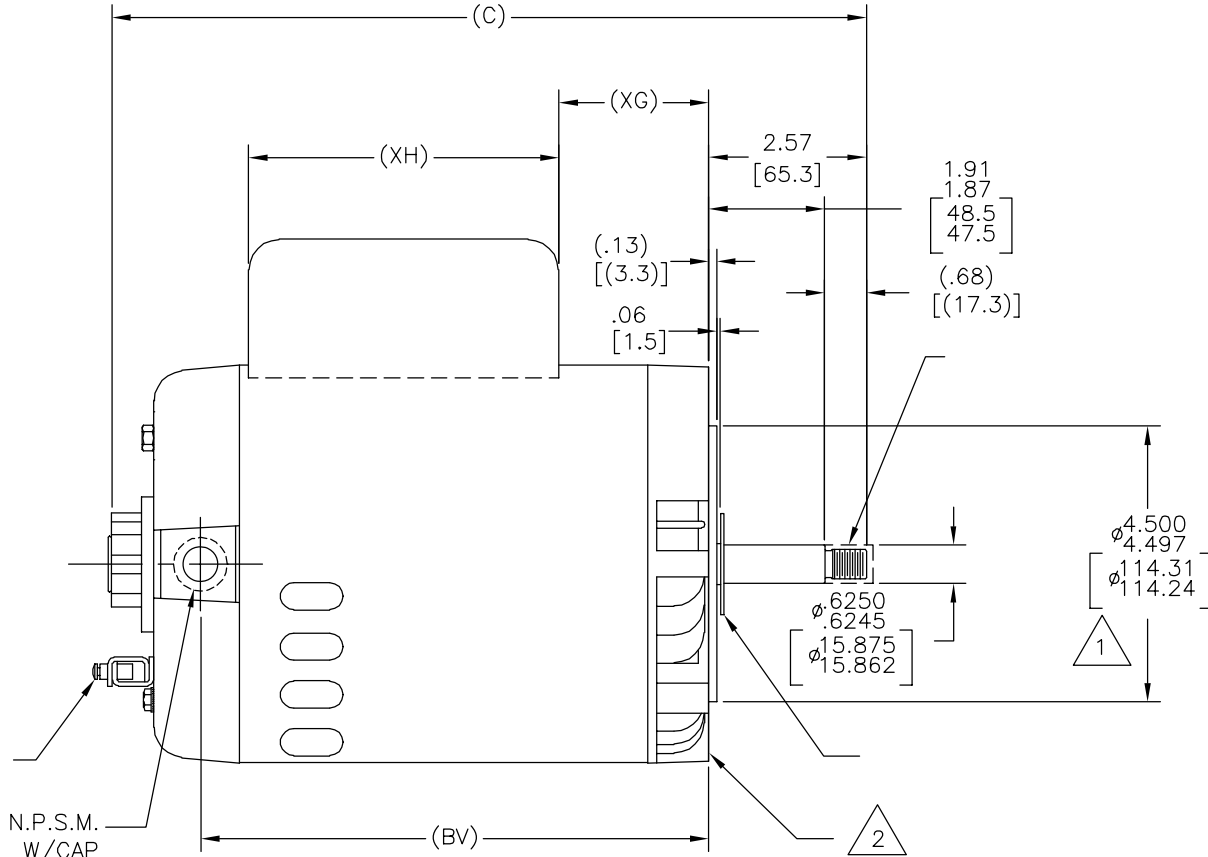
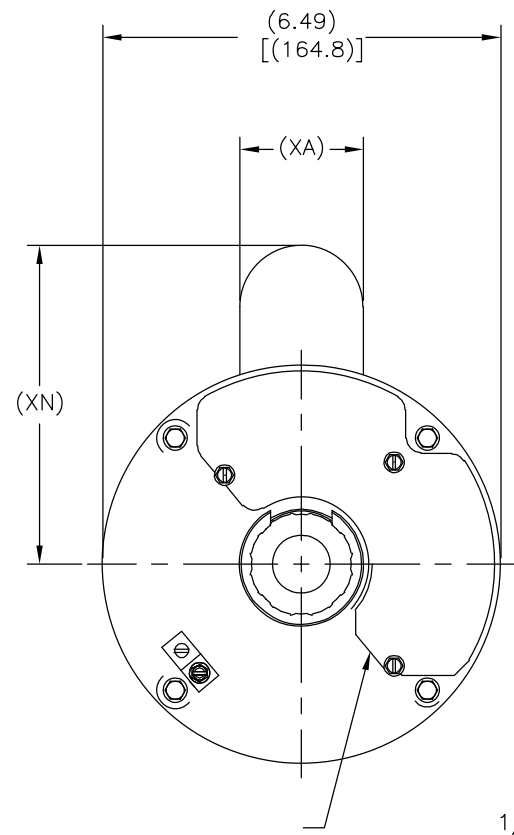
CARACTERISTICAS DE GEOMETRIA Y SIMBOLOS	
$\nabla$	PLANICIDAD
-	RECTITUD
$\sphericalangle$	ANGULARIDAD
$\perp$	PERPENDICULARIDAD (A ESQUADRA)
//	PARALELISMO
$\bigcirc$	REDONDEZ (CIRCULARIDAD)
$\text{---}$	CILINDRICIDAD
$\Delta$	PERFIL DE CUALQUIER SUPERFICIE
$\wedge$	PERFIL DE CUALQUIER LINEA
$\nabla$	VARIACION
$\oplus$	POSICION REAL
$\odot$	CONCENTRICIDAD
$\equiv$	SIMETRIA

A MENOS QUE SE ESPECIFIQUE DE OTRA MANERA, LAS TOLERANCIAS DE LAS DIMS; SON LAS SIGUIENTES:  
 PULG  $\pm .1 \pm .02 \pm .005 \pm .0005$   
 mm  $\pm 0.5 \pm 0.13 \pm 0.013$   
 ANG.  $\pm 50$  GRADOS  
 ELIMINAR REBABAS Y ORILLAS FILOSAS DEL BORDE.  
 PULG .003-.015 mm 0.1-0.4  
 FILETEAR ESQUINA: PULG .020 mm 0.5  
 MAQUINAR SUPERFICIES  
 PULG 125 mm 3.2  
 DIMS METRICAS MOSTRADAS [PARENTESIS]

DIBUJADO POR:	
APROBADO POR:	
TERCER ANGULO DE PROYECCION	FECHA EDS: 02-22-2008 REV. FORMATO: F
CONFIDENCIAL: ESTE DIBUJO Y SU INFORMACION SON PROPIEDAD DE USO EXCLUSIVO Y CONFIDENCIAL DE A.O.SMITH CORP. Y NO DEBERAN SER REVELADOS, DUPLICADOS, DISTRIBUIDOS O USARSE DE OTRA MANERA SIN EL CONSENTIMIENTO ESCRITO DE A.O. SMITH CORP. -TODOS LOS DERECHOS RESERVADOS.ASME Y14.5M 1994	

<b>ELECTRICAL PRODUCTS COMPANY</b> <small>A DIVISION OF A. O. SMITH CORPORATION</small>	
DESCRIPCION: <b>OUTLINE</b>	
TAMAÑO: C	NUMERO DE DIBUJO: 195003
ESCALA: NONE	HOJA: 1

4		3		2		1	
	(C)	(BV)	(XA)	(XG)	(XH)	(XN)	版本
195003-01	CXPM X56J 13.05[331.4]	9.03[229.4]	2.01[51.1]	3.19[81.0]	5.06[128.5]	5.20[132.1]	ECO
195003-02	CXPM P56J 13.55[344.2]	9.53[242.1]	2.01[51.1]	3.69[93.7]	5.06[128.5]	5.20[132.1]	ECO-0008802
195003-03	CXPM U56J 12.55[318.8]	8.53[216.7]	2.01[51.1]	2.69[68.3]	5.06[128.5]	5.20[132.1]	编制
							IVAN LOPEZ
							日期
							01-04-2010
							批准
							D.JUAREZ
							日期
							01-04-2010



- 形位公差  
 □ 平面度  
 — 直线度  
 < 倾斜度  
 ⊥ 垂直度  
 // 平行度  
 ○ 圆度  
 ∅ 圆柱度  
 内圆角  
 △ 面轮廓度  
 线轮廓度  
 圆跳动  
 ⊕ 位置度  
 ⊙ 同轴度  
 ≡ 对称度

除另有注明  
 尺寸公差如下:  
 英寸 X XX XXX XXXX  
 毫米 ±.1 ±.02 ±.005 ±.0005  
 毫米 ±0.5 ±0.13 ±0.013  
 角度 ±.50 度  
 清理毛刺和尖棱  
 英寸 .003-.015 毫米 0.1-0.4  
 内圆角  
 英寸 .020 毫米 0.5  
 表面粗糙度  
 英制 125 米制 3.2  
 米制尺寸显示在 [ ]

绘图:  
 批准:  
 第三角投影  
 图纸格式发布日期 02-22-2008  
 图纸格式版本 F  
 机密: 本图纸及相关信息所有权归A. O. SMITH公司所有。  
 未经A. O. SMITH公司书面授权, 不得泄露、复制、传播或作  
 其他用途。—版权所有  
 ASME Y14.5M 1994

**ACSmith** **ELECTRICAL PRODUCTS COMPANY**  
 Innovation has a name. A DIVISION OF A. O. SMITH CORPORATION

名称: **OUTLINE**

图幅: C 图号: 195003

比例: NONE 页号: 1