

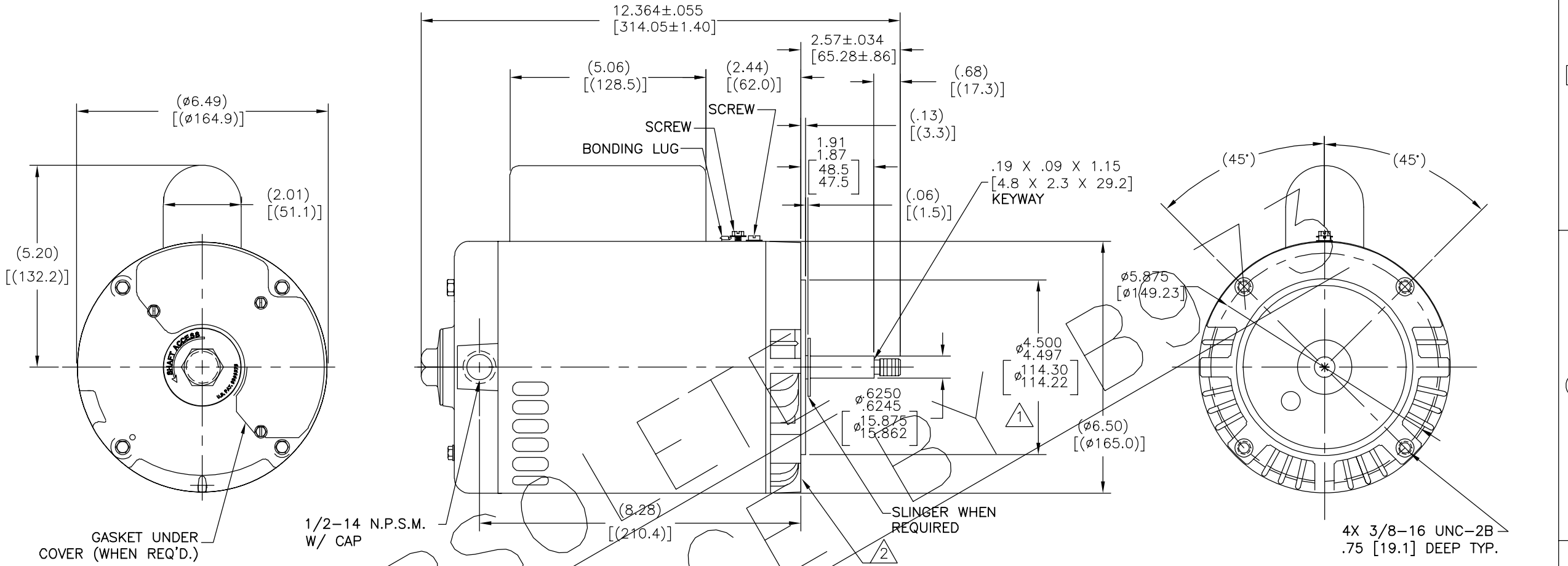
4

3

2

1

REV	ECO	REV BY	DATE	APPD	DATE
C	0008802	I.LOPEZ	09-08-2009	H.SANCHEZ	09-08-2009

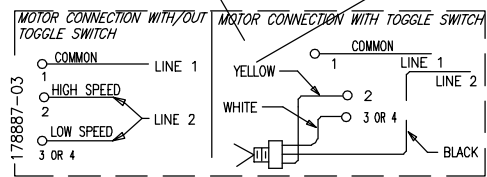


NAMEPLATE DATA

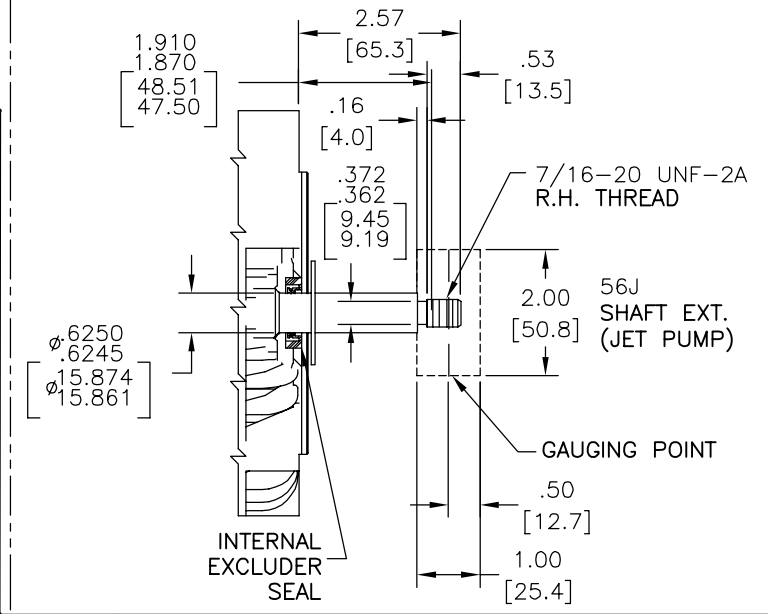
EXTERNAL CONNECTION DIAGRAM

NOTES

MODEL: 177058
 CUST PN: B973
 HP: 3/4-.10 SF: 1.50
 ROT: CW
 RPM: 3450/1725
 TYPE: CXPM CODE: H
 FORM: FRAME: M 56 J
 VOLTS: 115
 AMPS:
 MAX AMPS:
 SF AMPS: 11.2/5.0
 PH: 1 HZ: 60
 INS: B AMB: 40°C
 DUTY: CONT
 ENCLOSURE: ODP
 THERMALLY PROTECTED



- PILOT DIAMETER IS CONCENTRIC WITH SHAFT CENTERLINE WITHIN .004[.10] T.I.R.
- FACE OF MOUNTING FLANGE IS PERPENDICULAR TO SHAFT CENTERLINE WITHIN .004[.10] T.I.R.
- SHAFT RUNOUT NOT TO EXCEED .002[.05] T.I.R
- END PLAY NOT TO EXCEED .010[.25] MEASURED WITH NO THRUST
- FINISH PAINT TO BE BLACK
- FOR THREADED SHAFT EXT. MATING PARTS SHOULD BE RELIEVED ON THREAD TO CLEAR FILLET.



PERFORMANCE CURVE	APPROVED SAMPLE		
16331913			
UL COMPONENT	CSA		
FILE#	CCN#	FILE#	GUIDE#
E14663	XZWR2	LR4642	4211-01
CUSTOMER	DISTRIBUTION		

GEOMETRIC CHARACTERISTICS & SYMBOLS
 □ FLATNESS
 - STRAIGHTNESS
 ∠ ANGULARITY
 ⊥ PERPENDICULARITY (SQUARENESS)
 // PARALLELISM
 ○ ROUNDNESS (CIRCULARITY)
 ∅ CYLINDRICITY
 △ PROFILE OF ANY SURFACE
 ∩ PROFILE OF ANY LINE
 † RUNOUT
 ⊕ TRUE POSITION
 ⊙ CONCENTRICITY
 ≡ SYMMETRY

UNLESS OTHERWISE SPECIFIED DIM. TOLERANCES ARE AS FOLLOWS:
 INCH X XX XXX XXXX
 mm ±0.5 ±0.13 ±0.013
 ANG. ±.50 DEG
 REMOVE BURRS & BREAK SHARP EDGES:
 INCH .003-.015 mm 0.1-0.4
 CORNER FILLETS TO:
 INCH .020 mm 0.5
 MACHINE SURFACES:
 INCH 125 mm 3.2
 METRIC DIMS. SHOWN IN [BRACKETS]

DR BY: TREYES 06-12-2006
 APPD:
 THIRD ANGLE PROJECTION
 EDS DATE 01-21-2007
 FORMAT REV F
 CONFIDENTIAL: THIS DRAWING AND ITS INFORMATION ARE THE EXCLUSIVE AND CONFIDENTIAL PROPERTY OF A.O. SMITH CORP. AND ARE NOT TO BE DISCLOSED, DUPLICATED, DISTRIBUTED OR OTHERWISE USED WITHOUT THE WRITTEN CONSENT OF A.O. SMITH CORP.
 -ALL RIGHTS RESERVED. ASME Y14.5M 1994

<p>ELECTRICAL PRODUCTS COMPANY <small>A DIVISION OF A. O. SMITH CORPORATION</small></p>	
DESCRIPTION	OUTLINE
SIZE C	DWG NO 12743-001
SCALE NONE	SHEET 1

4

3

2

1

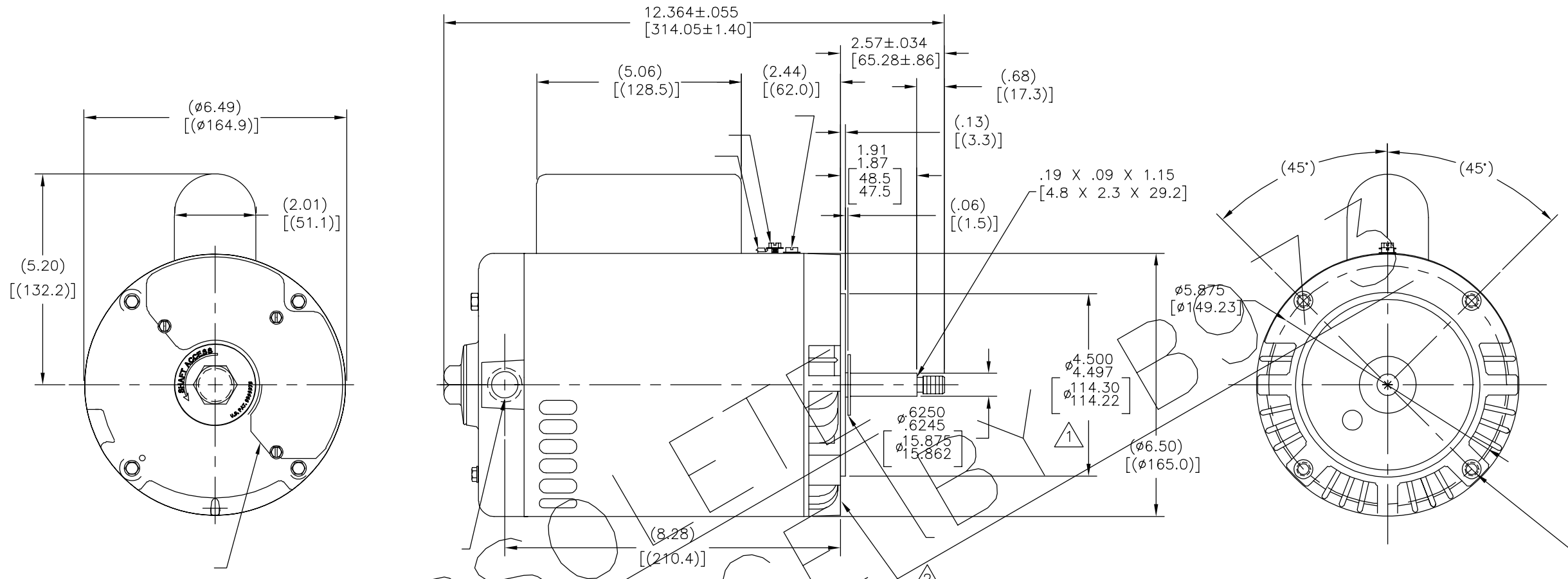
4

3

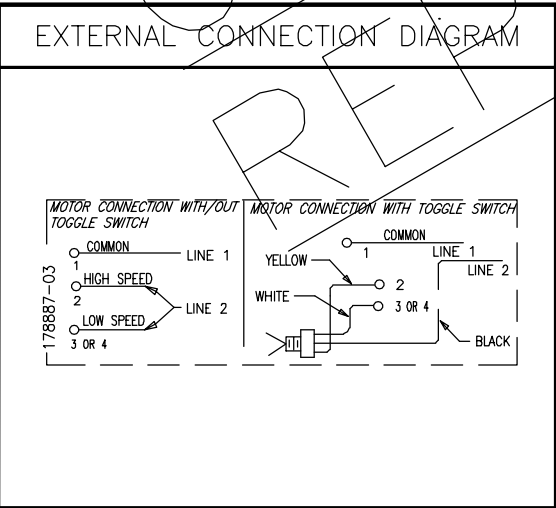
2

1

REVISION:	ECO	REVISADO POR:	FECHA:	APROBADO POR:	FECHA:
C	0008802	I.LOPEZ	09-08-2009	H.SANCHEZ	09-08-2009



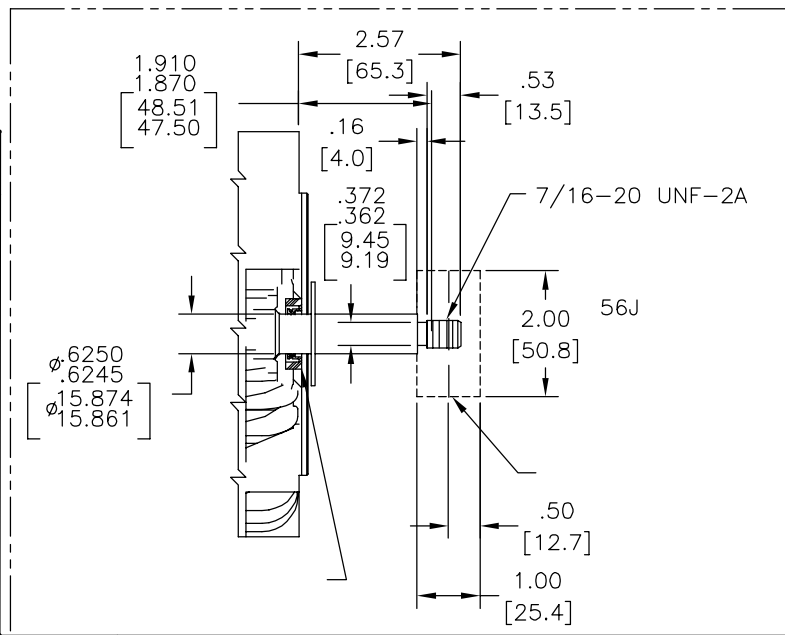
NAMEPLATE DATA	
MODEL: 177058	
CUST PN: B973	
HP: 3/4-.10	SF: 1.50
ROT: CW	
RPM: 3450/1725	
TYPE: CXPM	CODE: H
FORM:	FRAME: M 56 J
VOLTS: 115	
AMPS:	
MAX AMPS:	
SF AMPS: 11.2/5.0	
PH: 1	HZ: 60
INS: B	AMB: 40°C
DUTY: CONT	
ENCLOSURE: ODP	
THERMALLY PROTECTED	



NOTES

△

△



PERFORMANCE CURVE	APPROVED SAMPLE		
16331913			
UL COMPONENT	CSA		
FILE#	CCN#	FILE#	GUIDE#
E14663	XZWR2	LR4642	4211-01
CUSTOMER	DISTRIBUTION		

CARACTERISTICAS DE GEOMETRIA Y SIMBOLOS

- ▭ PLANICIDAD
- RECTITUD
- ∠ ANGULARIDAD
- ⊥ PERPENDICULARIDAD (A ESCUADRA)
- // PARALELISMO
- REDONDEZ (CIRCULARIDAD)
- ∅ CILINDRICIDAD
- △ PERFIL DE CUALQUIER SUPERFICIE
- ∧ PERFIL DE CUALQUIER LINEA
- ↑ VARIACION
- ⊕ POSICION REAL
- ◎ CONCENTRICIDAD
- = SIMETRIA

A MENOS QUE SE ESPECIFIQUE DE OTRA MANERA, LAS TOLERANCIAS DE LAS DIMS; SON LAS SIGUIENTES:

PULG ±.1 ±.02 ±.005 ±.0005
 mm ±0.5 ±0.13 ±0.013

ANG. ±50 GRADOS

ELIMINAR REBABAS Y ORILLAS FILOSAS DEL BORDE.

PULG .003-.015 mm 0.1-0.4
 FILETEAR ESQUINA: PULG .020 mm 0.5

MAQUINAR SUPERFICIES

PULG 125 mm 3.2

DIMS METRICAS MOSTRADAS [PARENTESIS]

DIBUJADO POR: TREYES
 06-12-2006

APROBADO POR:

TERCER ANGULO DE PROYECCION

FECHA EDS: 01-21-2007
 REV. FORMATO: F

CONFIDENCIAL: ESTE DIBUJO Y SU INFORMACION SON PROPIEDAD DE USO EXCLUSIVO Y CONFIDENCIAL DE A.O.SMITH CORP. Y NO DEBERAN SER REVELADOS, DUPLICADOS, DISTRIBUIDOS O USARSE DE OTRA MANERA SIN EL CONSENTIMIENTO ESCRITO DE A.O. SMITH CORP. -TODOS LOS DERECHOS RESERVADOS.ASME Y14.5M 1994

ACSmith
 Innovation has a name.

ELECTRICAL PRODUCTS COMPANY
 A DIVISION OF A. O. SMITH CORPORATION

DESCRIPCION: **OUTLINE**

TAMAÑO: C NUMERO DE DIBUJO: 12743-001

ESCALA: NONE HOJA: 1

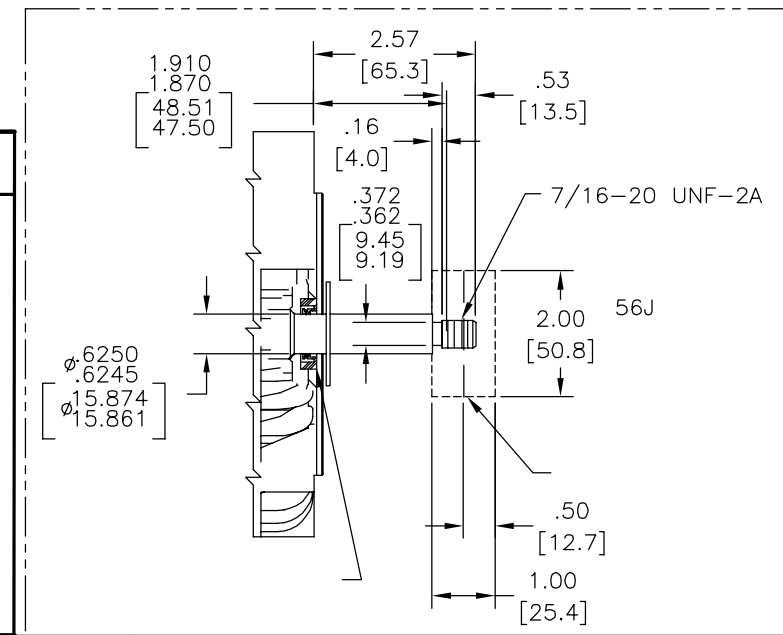
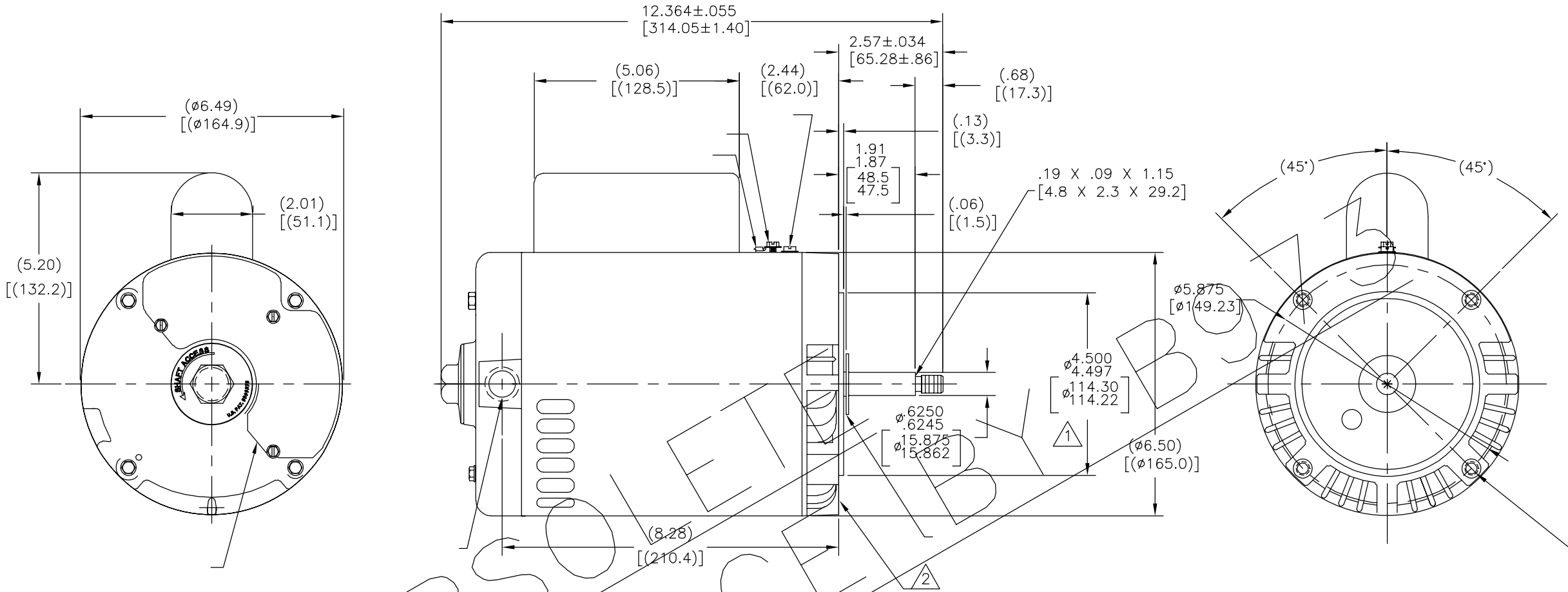
4

3

2

1

版本	ECO	编制	日期	批准	日期
C	0008802	I.LOPEZ	09-08-2009	H.SANCHEZ	09-08-2009



NAMEPLATE DATA		EXTERNAL CONNECTION DIAGRAM	NOTES
MODEL: 177058 CUST PN: B973 HP: 3/4-.10 SF: 1.50 ROT: CW RPM: 3450/1725 TYPE: CXPM CODE: H FORM: FRAME: M 56 J VOLTS: 115 AMPS: MAX AMPS: SF AMPS: 11.2/5.0 PH: 1 HZ: 60 INS: B AMB: 40°C DUTY: CONT ENCLOSURE: ODP THERMALLY PROTECTED		<p>MOTOR CONNECTION WITH/OUT TOGGLE SWITCH</p> <p>MOTOR CONNECTION WITH TOGGLE SWITCH</p>	▲ ▲

PERFORMANCE CURVE	APPROVED SAMPLE		
16331913			
UL COMPONENT	CSA		
FILE#	CCN#	FILE#	GUIDE#
E14663	XZWR2	LR4642	4211-01
CUSTOMER	DISTRIBUTION		

形位公差	除另有注明
□ 平面度	尺寸公差如下:
— 直线度	英寸 X XX XXX XXXX
∠ 倾斜度	英寸 ±.1 ±.02 ±.005 ±.0005
⊥ 垂直度	毫米 ±0.5 ±0.13 ±0.013
// 平行度	角度 ±.50 度
○ 圆度	清理毛刺和尖棱
⊙ 圆柱度	英寸 .003-.015 毫米 0.1-0.4
△ 面轮廓度	内圆角
∩ 线轮廓度	英寸 .020 毫米 0.5
↗ 圆跳动	表面粗糙度
⊕ 位置度	英制 125 米制 3.2
◎ 同轴度	米制尺寸显示在 []
≡ 对称度	

绘图:	TREYES	06-12-2006
批准:		
第三角投影		图纸格式发布日期 01-21-2007 图纸格式版本 F
机密: 本图纸及相关信息所有权归A. O. SMITH公司所有。 未经A. O. SMITH公司书面授权, 不得泄露、复制、传播或作其他用途。—版权所有		
ASME Y14.5M 1994		

ELECTRICAL PRODUCTS COMPANY A DIVISION OF A. O. SMITH CORPORATION	
名称	
OUTLINE	
图幅	图号
C	12743-001
比例	页号
NONE	1

4

3

2

1

4

3

2

1