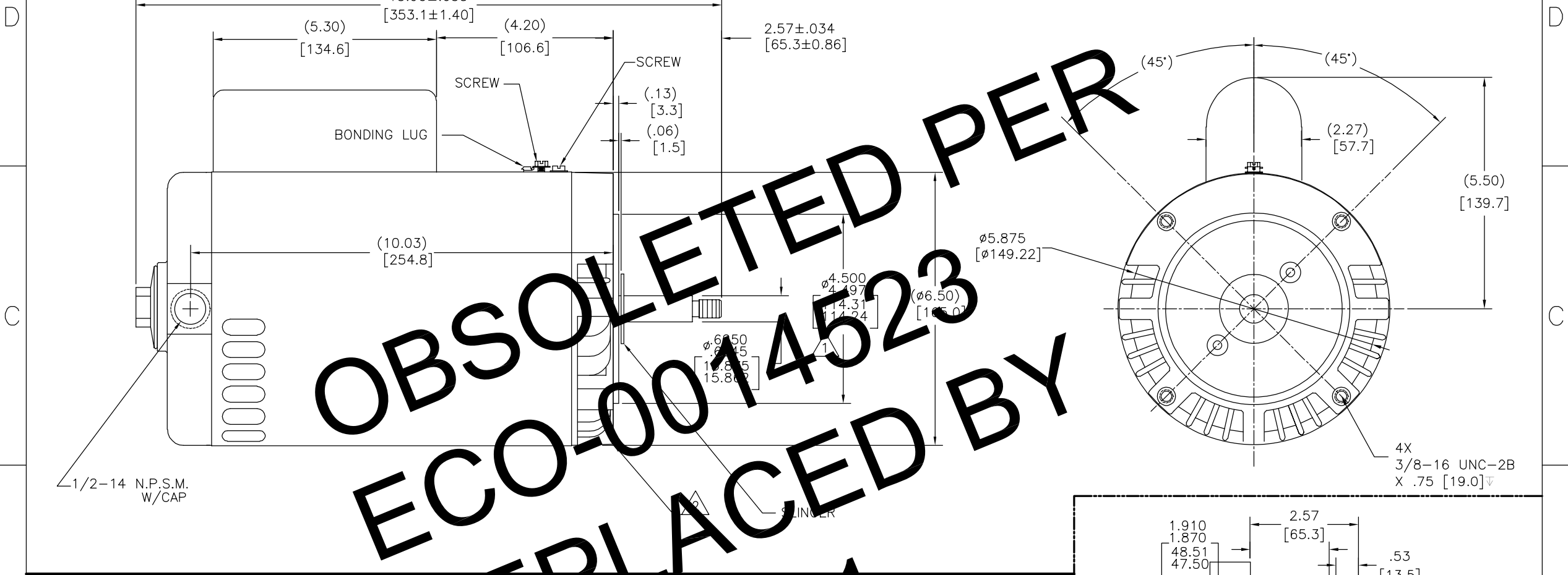
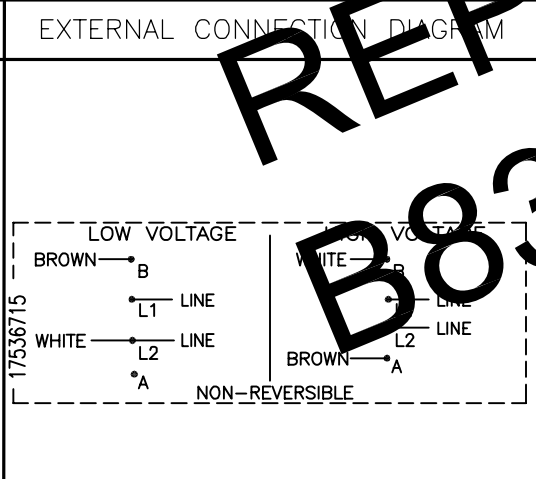


REV	ECO	REV BY	DATE	APPD	DATE
D	0014523	AS	10-21-2010	TZ	10-21-2010

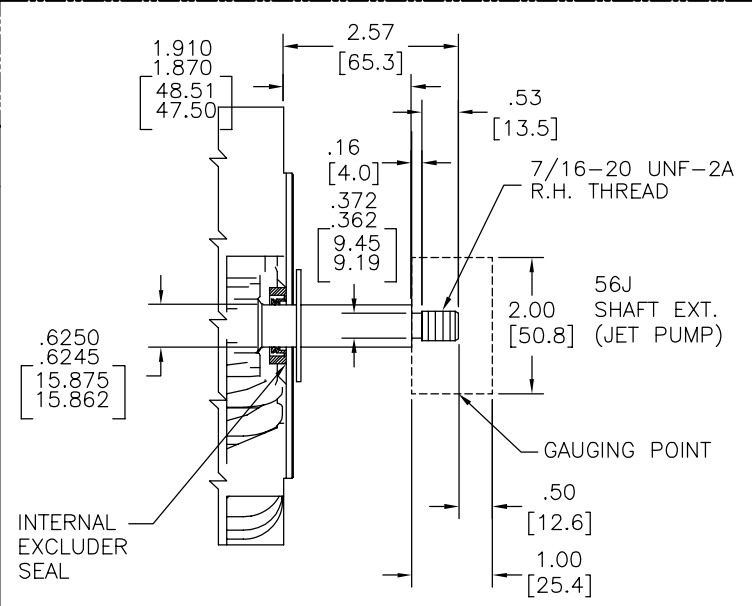


NAMEPLATE DATA	
MODEL: 164728	SF: 1.20
CUST PN: B836	
HP: 2.0	
ROT: CW	
RPM: 3450	
TYPE: CX	CODE: G
FORM:	FRAME: Y 56 J
VOLTS: 230/115	
AMPS: SF 10.8/21.6	
MAX AMPS: -----	
SF AMPS:	
PH: 1	HZ: 60
INS: B	AMB: 50°C
DUTY: CONT	
ENCLOSURE: ODP	
THERMALLY PROTECTED	



NOTES:

- PILOT DIAMETER IS CONCENTRIC WITH SHAFT CENTERLINE WITHIN .004[.10] T.I.R.
- FACE OF MOUNTING FLANGE IS PERPENDICULAR TO SHAFT CENTERLINE WITHIN .004[.10] T.I.R.
- SHAFT RUNOUT NOT TO EXCEED .002[.05] T.I.R.
- END PLAY NOT TO EXCEED .010[.25] MEASURED WITH NO THRUST
- ALL DIMENSIONS SHOWN IN PARENTHESIS ARE REFERENCE DIMENSIONS.



PERFORMANCE CURVE	APPROVED SAMPLE	GEOMETRIC CHARACTERISTICS & SYMBOLS	
16367411	-----	FLATNESS	UNLESS OTHERWISE SPECIFIED DIM. TOLERANCES ARE AS FOLLOWS:
UL COMPONENT	CSA	STRAIGHTNESS	INCH ±.1 .XX .XXX .XXXX
FILE#	CCN#	ANGULARITY	mm ±0.5 ±0.13 ±0.013
E14663	XEWR2	PERPENDICULARITY (SQUARENESS)	ANG. ±.50 DEG
		PARALLELISM	REMOVE BURRS & BREAK SHARP EDGES:
		ROUNDNESS (CIRCULARITY)	INCH .003-.015 mm 0.1-0.4
		CYLINDRICITY	CORNER FILLETS TO:
		PROFILE OF ANY SURFACE	INCH .020 mm 0.5
		PROFILE OF ANY LINE	MACHINE SURFACES:
		RUNOUT	INCH 125 mm 3.2
CUSTOMER	DISTRIBUTION	TRUE POSITION	METRIC DIMS. SHOWN IN [BRACKETS]
		CONCENTRICITY	
		SYMMETRY	

DR BY: _____
 APPD: _____
 THIRD ANGLE PROJECTION

EDS DATE _____ EDS DATE _____
 FORMAT REV F

CONFIDENTIAL: THIS DRAWING AND ITS INFORMATION ARE THE EXCLUSIVE AND CONFIDENTIAL PROPERTY OF A.O. SMITH CORP. AND ARE NOT TO BE DISCLOSED, DUPLICATED, DISTRIBUTED OR OTHERWISE USED WITHOUT THE WRITTEN CONSENT OF A.O. SMITH CORP. -ALL RIGHTS RESERVED. ASME Y14.5M 1994

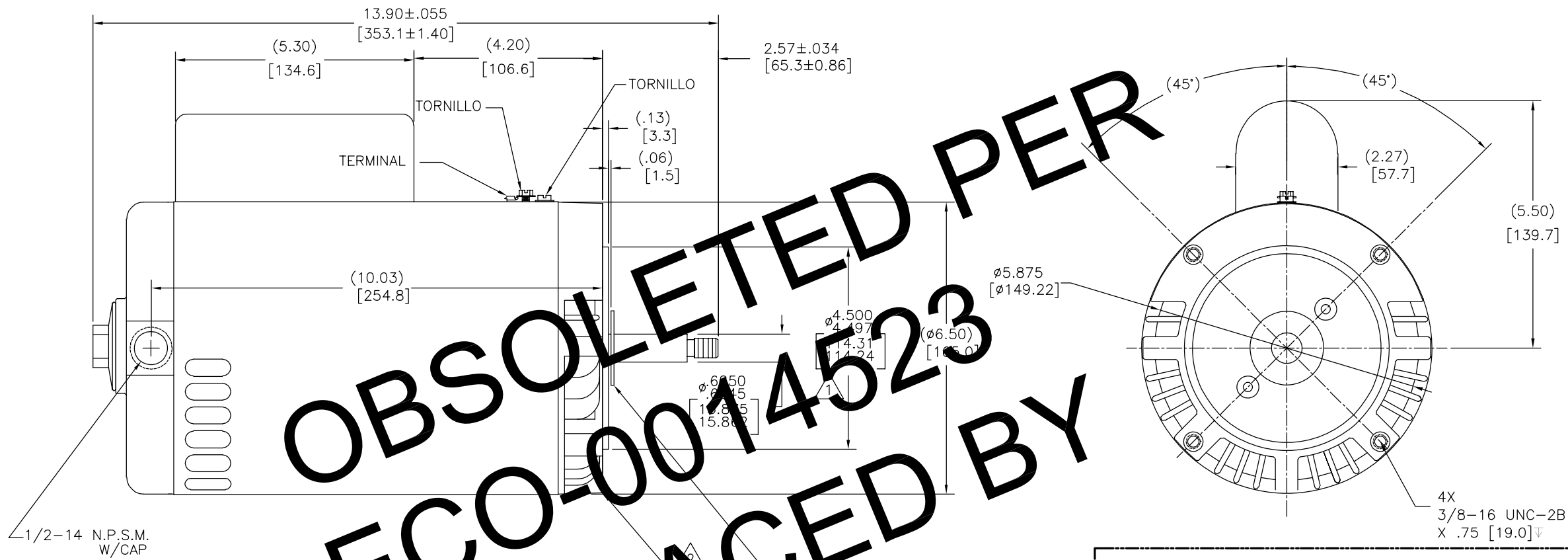
AC Smith **ELECTRICAL PRODUCTS COMPANY**
 Innovation has a name. A DIVISION OF A. O. SMITH CORPORATION

DESCRIPTION: **OUTLINE**

SIZE: C DWG NO: 12732-005

SCALE: NONE SHEET 1

REVISION: ECO	REVISADO POR: AS	FECHA: 10-21-2010	APROBADO POR: TZ	FECHA: 10-21-2010
D	0014523			



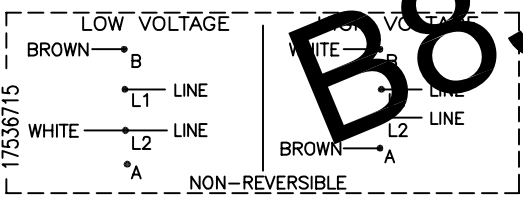
OBSOLETE PER
ECO-0014523
REPLACED BY
B836-S01

NAMEPLATE DATA

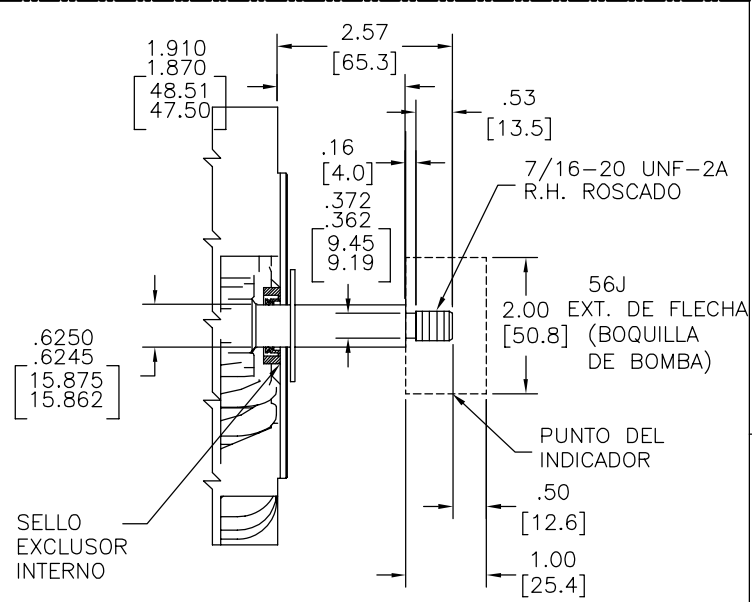
EXTERNAL CONNECTION DIAGRAM

NOTAS:

MODEL: 164728
CUST PN: B836
HP: 2.0 SF: 1.20
ROT: CW
RPM: 3450
TYPE: CX CODE: G
FORM: FRAME: Y 56 J
VOLTS: 230/115
AMPS: SF 10.8/21.6
MAX AMPS: ---
SF AMPS: ---
PH: 1 HZ: 60
INS: B AMB: 50°C
DUTY: CONT
ENCLOSURE: ODP
THERMALLY PROTECTED



1. EL DIAMETRO GUI ES CONCENTRICO A LA LINEA DE CENTRO DE LA FLECHA DENTRO DE .004[.10] L.T.I
2. LA CARA DEL REBORDE ES PERPENDICULAR A LA LINEA DE CENTRO DE LA FLECHA DENTRO DE .004[.10] L.T.I
3. LA OSCILACION DE LA FLECHA NO DEBE EXEDER DE .002[.05] L.T.I
4. NO EXCEDER .010[.25] DE JUEGO AXIAL MEDIDO SIN PRESIONAR
5. TODAS LAS DIMENSIONES MOSTRADAS EN PARENTESIS SON DIMENSIONES DE REFERENCIA.



PERFORMANCE CURVE	APPROVED SAMPLE
16367411	-----

UL COMPONENT	CSA
FILE#	CCN#
E14663	XEWR2
FILE#	GUIDE#
LR4642	4211-01

CARACTERISTICAS DE GEOMETRIA Y SIMBOLOS
 Z PLANICIDAD
 - RECTITUD
 < ANGULARIDAD
 ⊥ PERPENDICULARIDAD (A ESCUADRA)
 // PARALELISMO
 O REDONDEZ (CIRCULARIDAD)
 ∅ CILINDRICIDAD
 △ PERFIL DE CUALQUIER SUPERFICIE
 ○ PERFIL DE CUALQUIER LINEA
 / VARIACION
 ⊕ POSICION REAL
 ⊙ CONCENTRICIDAD
 = SIMETRIA

A MENOS QUE SE ESPECIFIQUE DE OTRA MANERA, LAS TOLERANCIAS DE LAS DIMS; SON LAS SIGUIENTES:
 PULG ±.1 ±.02 ±.005 ±.0005
 mm ±0.5 ±0.13 ±0.013
 ANG. ±.50 GRADOS
 ELIMINAR REBABAS Y ORILLAS FILASAS DEL BORDE.
 PULG .003-.015 mm 0.1-0.4
 FILETEAR ESQUINA: PULG .020 mm 0.5
 MAQUINAR SUPERFICIES
 PULG 125 mm 3.2
 DIMS METRICAS MOSTRADAS [PARENTESIS]

DIBUJADO POR:
 APROBADO POR:
 TERCER ANGULO DE PROYECCION
 FECHA EDS: EDS DATE
 REV. FORMATO: F
 CONFIDENCIAL: ESTE DIBUJO Y SU INFORMACION SON PROPIEDAD DE USO EXCLUSIVO Y CONFIDENCIAL DE A.O.SMITH CORP. Y NO DEBERAN SER REVELADOS, DUPLICADOS, DISTRIBUIDOS O USARSE DE OTRA MANERA SIN EL CONSENTIMIENTO ESCRITO DE A.O. SMITH CORP.
 -TODOS LOS DERECHOS RESERVADOS.ASME Y14.5M 1994

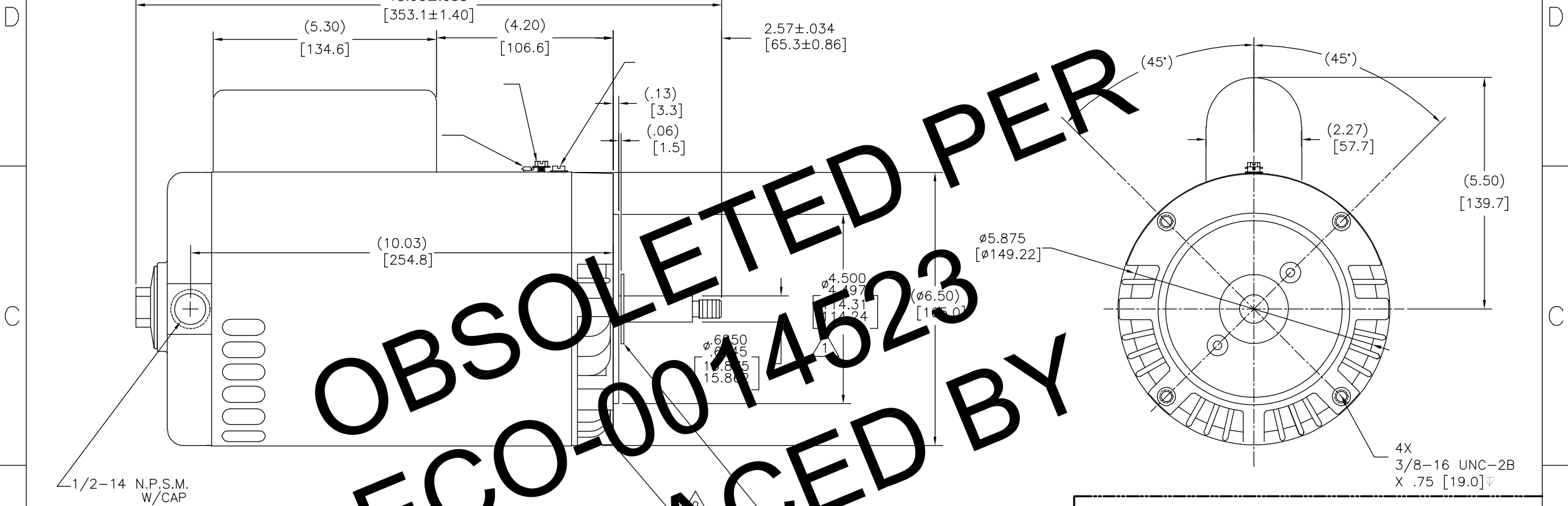
AC Smith **ELECTRICAL PRODUCTS COMPANY**
 Innovation has a name. A DIVISION OF A. O. SMITH CORPORATION

DESCRIPCION: **OUTLINE**

TAMAÑO: C NUMERO DE DIBUJO: 12732-005

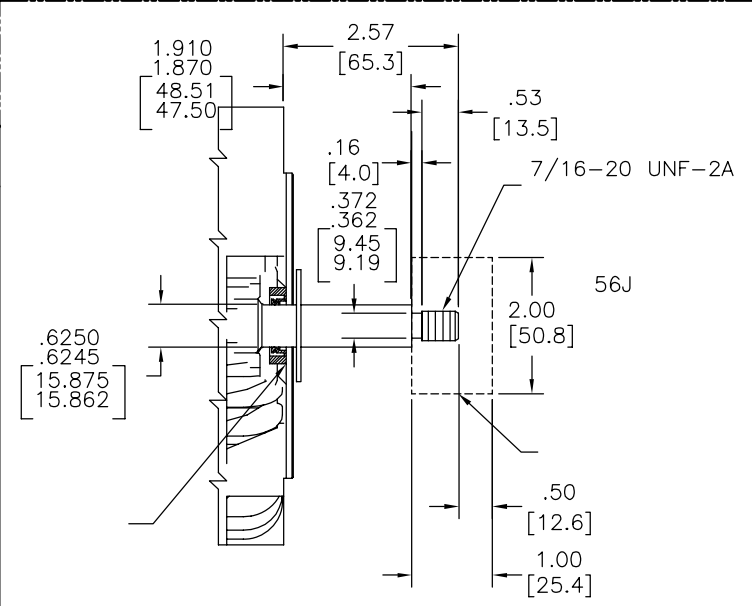
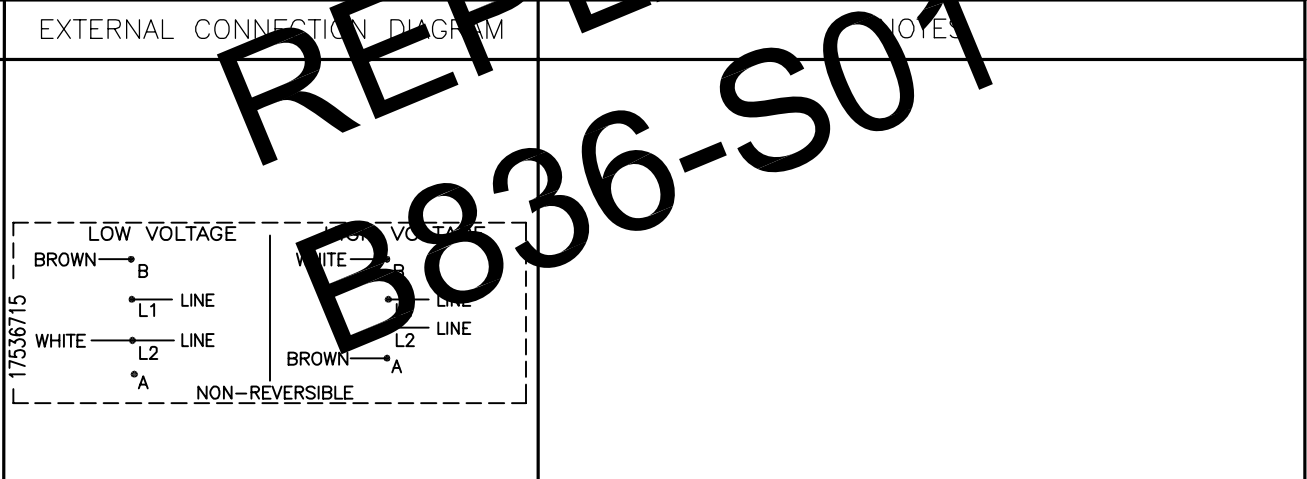
ESCALA: NONE HOJA: 1

版本	ECO	编制	日期	批准	日期
D	0014523	AS	10-21-2010	TZ	10-21-2010



OBSOLETE PER
ECO-0014523
REPLACED BY
B836-S01

NAMEPLATE DATA	
MODEL: 164728	CUST PN: B836
HP: 2.0	SF: 1.20
ROT: CW	
RPM: 3450	
TYPE: CX	CODE: G
FORM:	FRAME: Y 56 J
VOLTS: 230/115	
AMPS: SF 10.8/21.6	
MAX AMPS: -----	
SF AMPS: -----	
PH: 1	HZ: 60
INS: B	AMB: 50°C
DUTY: CONT	
ENCLOSURE: ODP	
THERMALLY PROTECTED	



PERFORMANCE CURVE	APPROVED SAMPLE	形位公差 □ 平面度 ⊥ 垂直度 ∠ 倾斜度 ⊥ 平行度 ○ 圆度 ⊙ 圆柱度 ⌒ 面轮廓度 ⊖ 线轮廓度 ⊕ 圆跳动 ⊕ 位置度 ⊕ 同轴度 = 对称度	
16367411	-----		
UL COMPONENT	CSA		
FILE#	CCN#		FILE#
E14663	XEWR2	LR4642	4211-01
CUSTOMER	DISTRIBUTION		

除另有注明
尺寸公差如下:

英寸	±.1	±.02	±.005	±.0005
毫米	±0.5	±0.13	±0.013	

角度 ±.50 度
清理毛刺和尖棱
英寸 .003-.015 毫米 0.1-0.4
内圆角
英寸 .020 毫米 0.5
表面粗糙度
英制 125 米制 3.2
米制尺寸显示在 []

绘图:	
批准:	
第三角投影	
图密: 本图纸及相关信息所有权归A. O. SMITH公司所有。未经A. O. SMITH公司书面授权, 不得泄露、复制、传播或作其他用途。一版权所有	
ASME Y14.5M 1994	

 ELECTRICAL PRODUCTS COMPANY <small>A DIVISION OF A. O. SMITH CORPORATION</small>	
名称	OUTLINE
图幅	C
图号	12732-005
比例	NONE
页号	1