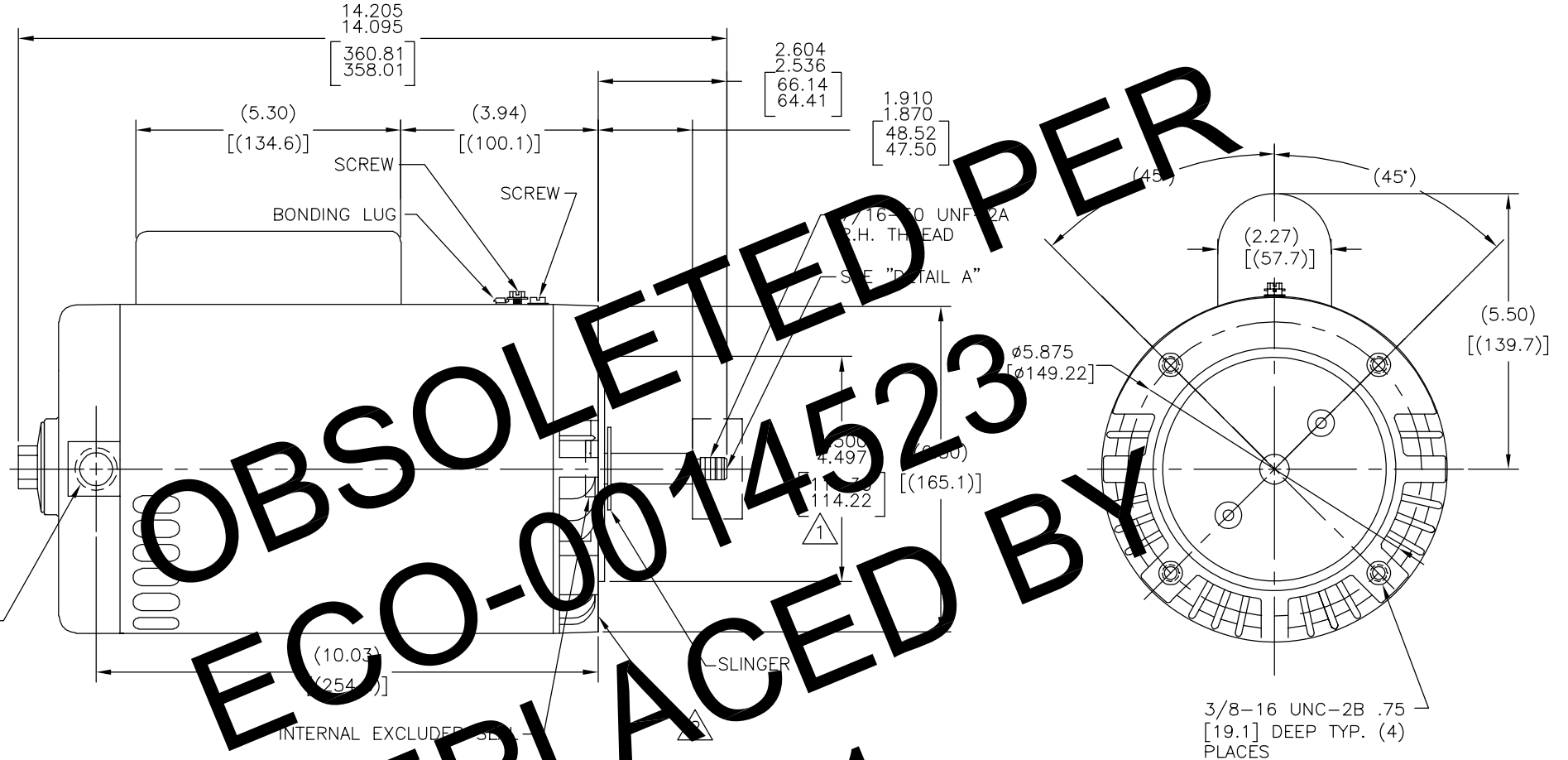
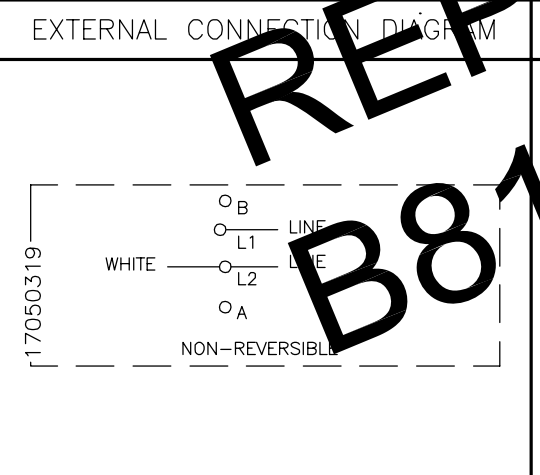


| REV | ECO | REV BY | DATE | APPD | DATE |
|-----|---------|--------|------------|------|------------|
| D | 0014523 | AS | 10-12-2010 | TZ | 10-21-2010 |

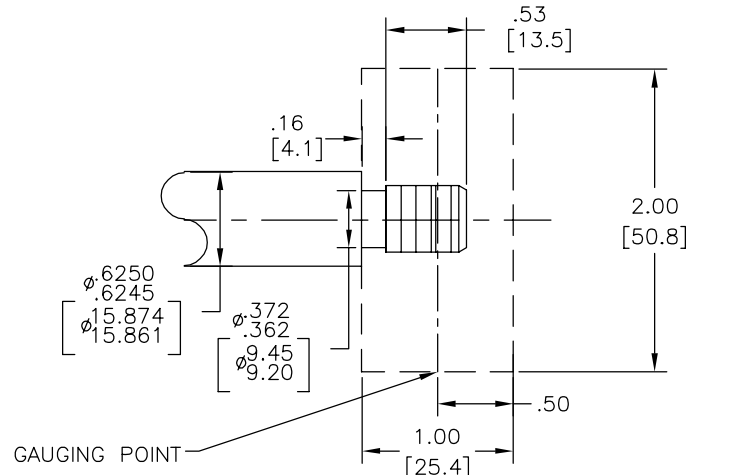


OBSOLETE PER
ECO-0014523
REPLACED BY
B818-S01

| NAMEPLATE DATA | |
|---|---------------------|
| MODEL: 165126 CUST PN: B818 HP: 3.0 ROT: CW RPM: 3450 TYPE: CX FORM: CODE: G FRAME: Y 56 J | SF: 1.15 |
| VOLTS: 208-230 AMPS: SF 10.4-9.6 MAX AMPS: SF AMPS: - | |
| PH: 1 INS: B DUTY: CONT ENCLOSURE: ODP THERMALLY PROTECTED | HZ: 60 AMB: 50°C |



1. BOLT DIAMETER IS CONCENTRIC WITH SHAFT CENTERLINE WITHIN .004 T.I.R.
2. FACE OF MOUNTING FLANGE IS PERPENDICULAR TO SHAFT CENTERLINE WITHIN .004 T.I.R.
3. SHAFT RUNOUT NOT TO EXCEED .002 T.I.R
4. END PLAY NOT TO EXCEED .010 MEASURED WITH NO THRUST



| PERFORMANCE CURVE | | APPROVED SAMPLE | |
|-------------------|---------|-----------------|---------|
| 15530311 | | CSA | |
| FILE# | CCN# | FILE# | GUIDE# |
| PENDING | PENDING | PENDING | PENDING |
| CUSTOMER | | | |

GEOMETRIC CHARACTERISTICS & SYMBOLS
 ▽ FLATNESS
 — STRAIGHTNESS
 ∠ ANGULARITY
 ⊥ PERPENDICULARITY (SQUARENESS)
 // PARALLELISM
 ○ ROUNDNESS (CIRCULARITY)
 ∅ CYLINDRICITY
 △ PROFILE OF ANY SURFACE
 ∩ PROFILE OF ANY LINE
 ↑ RUNOUT
 ⊕ TRUE POSITION
 ⊙ CONCENTRICITY
 = SYMMETRY

UNLESS OTHERWISE SPECIFIED DIM. TOLERANCES ARE AS FOLLOWS:
 INCH X XX XXX XXXX
 ±.1 ±.02 ±.005 ±.0005
 mm ±0.5 ±0.13 ±0.013
 ANG. ±.50 DEG
 REMOVE BURRS & BREAK SHARP EDGES:
 INCH .003-.015 mm 0.1-0.4
 CORNER FILLETS TO:
 INCH .020 mm 0.5
 MACHINE SURFACES:
 INCH 125 mm 3.2
 METRIC DIMS. SHOWN IN [BRACKETS]

DR BY: KHR 09-02-2005
 APPD:
 THIRD ANGLE PROJECTION
 EDS DATE 02-22-2008
 FORMAT REV F
 CONFIDENTIAL: THIS DRAWING AND ITS INFORMATION ARE THE EXCLUSIVE AND CONFIDENTIAL PROPERTY OF A.O. SMITH CORP. AND ARE NOT TO BE DISCLOSED, DUPLICATED, DISTRIBUTED OR OTHERWISE USED WITHOUT THE WRITTEN CONSENT OF A.O. SMITH CORP.
 -ALL RIGHTS RESERVED. ASME Y14.5M 1994

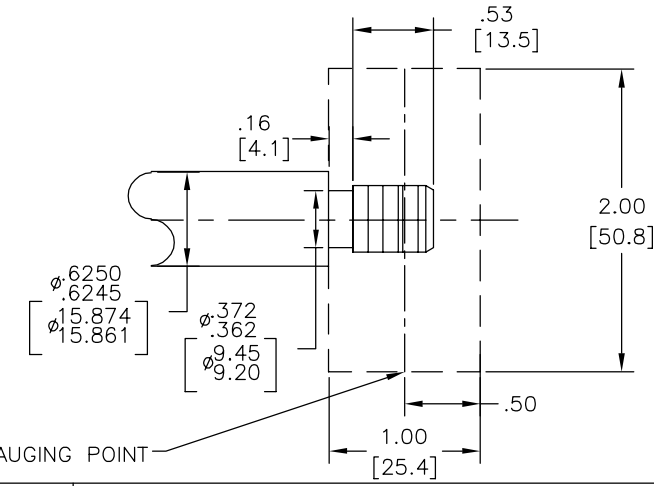
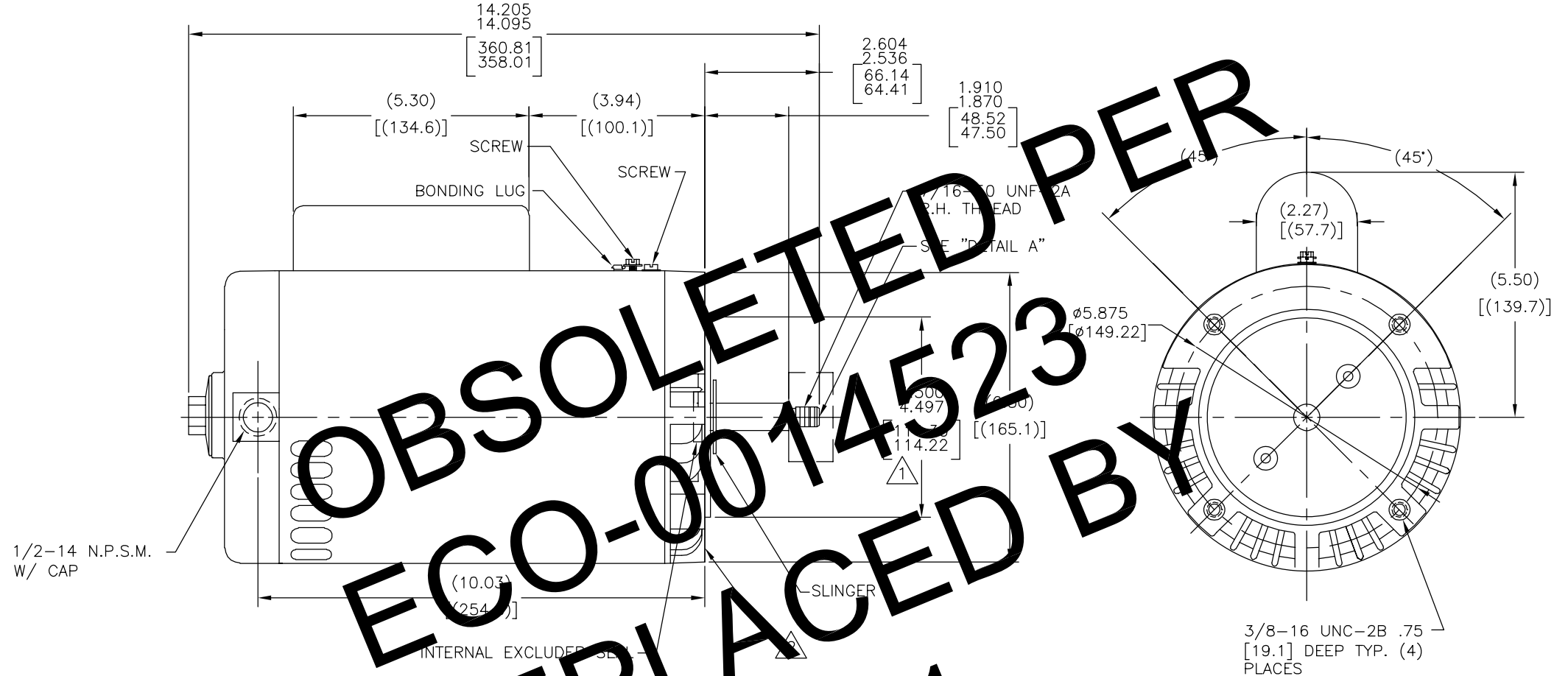
AC Smith
 Innovation has a name.
ELECTRICAL PRODUCTS COMPANY
 A DIVISION OF A. O. SMITH CORPORATION

DESCRIPTION: OUTLINE
 SIZE: C DWG NO: 12676-016
 SCALE: NONE SHEET: 1

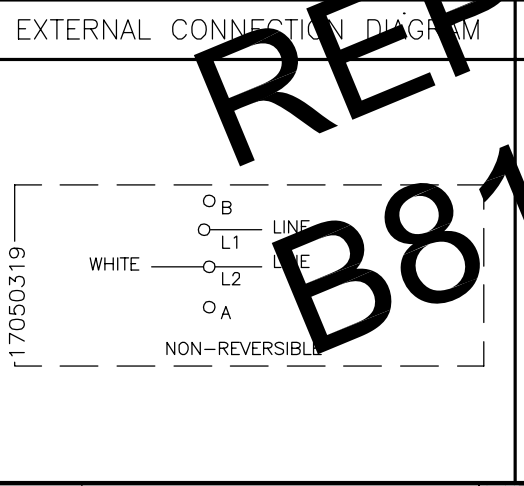
4 3 2 1

4 3 2 1

| | | | | |
|---------------|------------------|-------------------|------------------|-------------------|
| REVISION: ECO | REVISADO POR: AS | FECHA: 10-12-2010 | APROBADO POR: TZ | FECHA: 10-21-2010 |
| D | 0014523 | | | |



| NAMEPLATE DATA | |
|---------------------|---------------|
| MODEL: 165126 | CUST PN: B818 |
| HP: 3.0 | SF: 1.15 |
| ROT: CW | |
| RPM: 3450 | |
| TYPE: CX | CODE: G |
| FORM: | FRAME: Y 56 J |
| VOLTS: 208-230 | |
| AMPS: SF 10.4-9.6 | |
| MAX AMPS: | |
| SF AMPS: - | |
| PH: 1 | HZ: 60 |
| INS: B | AMB: 50°C |
| DUTY: CONT | |
| ENCLOSURE: ODP | |
| THERMALLY PROTECTED | |



1. HOLE DIAMETER IS CONCENTRIC WITH SHAFT CENTERLINE WITHIN .004 T.I.R.
2. FACE OF MOUNTING FLANGE IS PERPENDICULAR TO SHAFT CENTERLINE WITHIN .004 T.I.R.
3. SHAFT RUNOUT NOT TO EXCEED .002 T.I.R
4. END PLAY NOT TO EXCEED .010 MEASURED WITH NO THRUST

| PERFORMANCE CURVE | APPROVED SAMPLE |
|-------------------|-----------------|
| 15530311 | CSA |
| UL COMPONENT | CSA |
| FILE# | CCN# |
| PENDING | PENDING |
| CUSTOMER | |

| FILE# | CCN# | FILE# | GUIDE# |
|---------|---------|---------|---------|
| PENDING | PENDING | PENDING | PENDING |

- CARACTERISTICAS DE GEOMETRIA Y SIMBOLOS
- PLANICIDAD
 - RECTITUD
 - ∠ ANGULARIDAD
 - ⊥ PERPENDICULARIDAD (A ESCUADRA)
 - // PARALELISMO
 - REDONDEZ (CIRCULARIDAD)
 - ∅ CILINDRICIDAD
 - △ PERFIL DE CUALQUIER SUPERFICIE
 - ∇ PERFIL DE CUALQUIER LINEA
 - ↑ VARIACION
 - ⊕ POSICION REAL
 - ⊙ CONCENRICIDAD
 - = SIMETRIA

A MENOS QUE SE ESPECIFIQUE DE OTRA MANERA, LAS TOLERANCIAS DE LAS DIMS; SON LAS SIGUIENTES:

| | | | | |
|------|------|-------|--------|--------|
| PULG | ±.1 | ±.02 | ±.005 | ±.0005 |
| mm | ±0.5 | ±0.13 | ±0.013 | |

ANG. ±.50 GRADOS
ELIMINAR REBABAS Y ORILLAS FILOSAS DEL BORDE.
PULG .003-.015 mm 0.1-0.4
FILETEAR ESQUINA: PULG .020 mm 0.5
MAQUINAR SUPERFICIES
PULG 125 mm 3.2
DIMS METRICAS MOSTRADAS [PARENTESIS]

DIBUJADO POR: KHR

APROBADO POR:

TERCER ANGULO DE PROYECCION

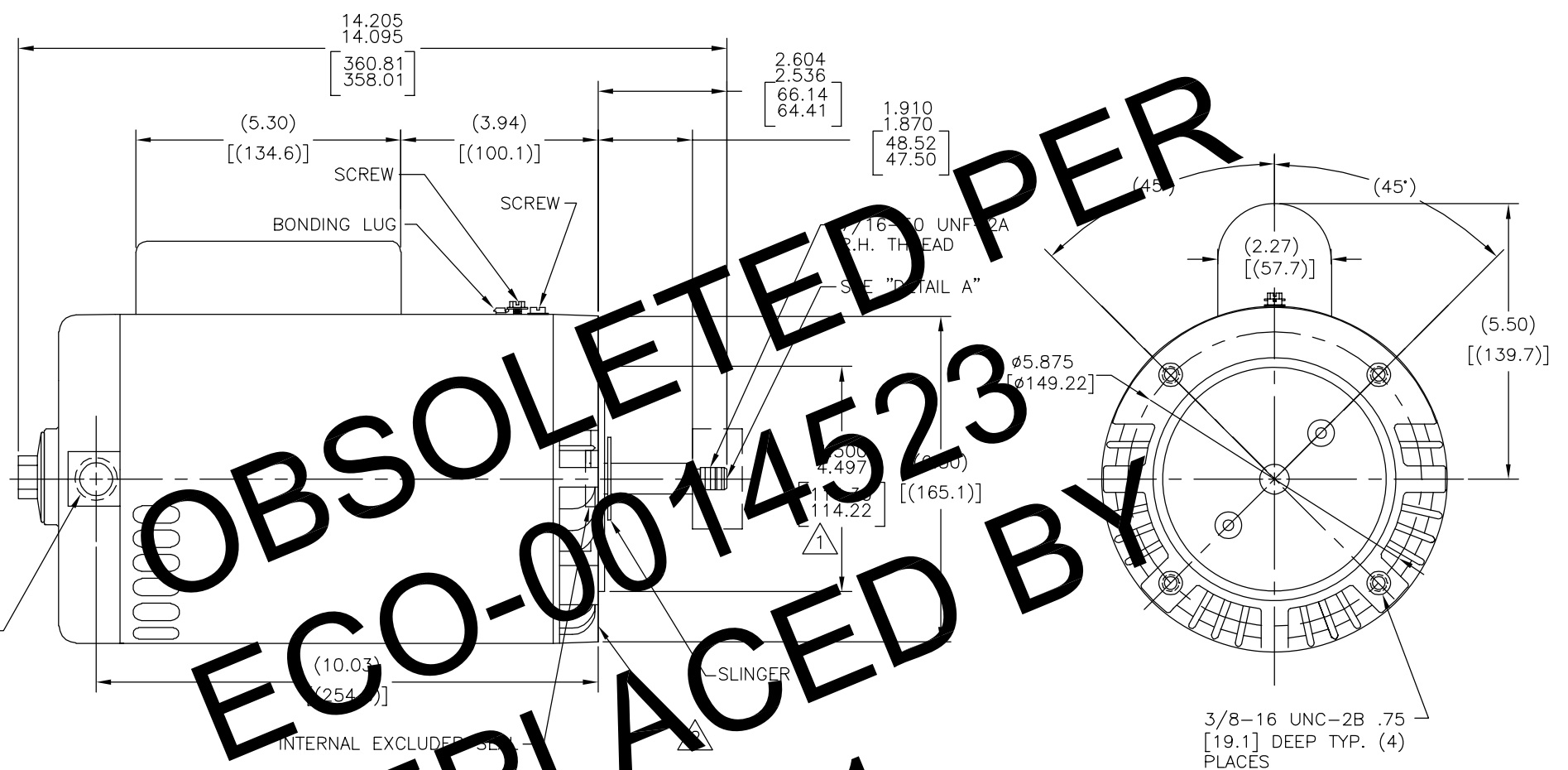
FECHA EDS: 02-22-2008

REV. FORMATO: F

CONFIDENCIAL: ESTE DIBUJO Y SU INFORMACION SON PROPIEDAD DE USO EXCLUSIVO Y CONFIDENCIAL DE A.O.SMITH CORP. Y NO DEBERAN SER REVELADOS, DUPLICADOS, DISTRIBUIDOS O USARSE DE OTRA MANERA SIN EL CONSENTIMIENTO ESCRITO DE A.O. SMITH CORP.
-TODOS LOS DERECHOS RESERVADOS.ASME Y14.5M 1994

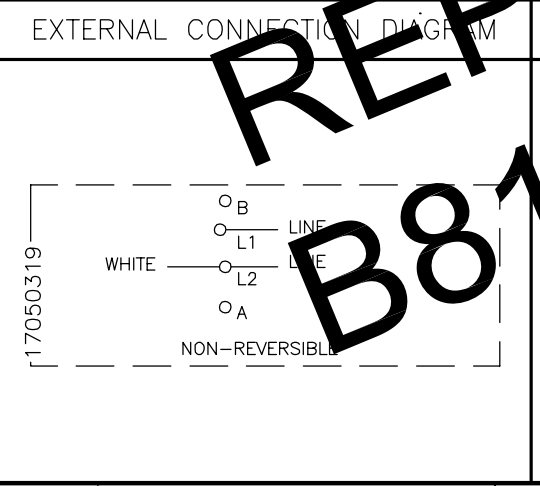
| | |
|---|--|
| <p>AC Smith Innovation has a name.</p> <p>ELECTRICAL PRODUCTS COMPANY A DIVISION OF A. O. SMITH CORPORATION</p> | <p>DESCRIPCION: OUTLINE</p> <p>TAMAÑO: C</p> <p>NUMERO DE DIBUJO: 12676-016</p> <p>ESCALA: NONE</p> <p>HOJA: 1</p> |
|---|--|

| | | | | | |
|----|---------|----|------------|----|------------|
| 版本 | ECO | 编制 | 日期 | 批准 | 日期 |
| D | 0014523 | AS | 10-12-2010 | TZ | 10-21-2010 |

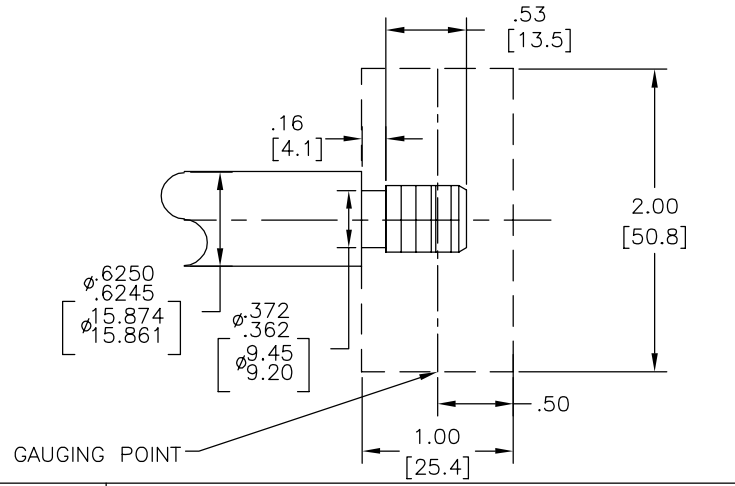


OBSOLETE PER
ECO-0014523
REPLACED BY
B818-S01

| NAMEPLATE DATA | |
|---------------------|---------------|
| MODEL: 165126 | CUST PN: B818 |
| HP: 3.0 | SF: 1.15 |
| ROT: CW | |
| RPM: 3450 | |
| TYPE: CX | CODE: G |
| FORM: | FRAME: Y 56 J |
| VOLTS: 208-230 | |
| AMPS: SF 10.4-9.6 | |
| MAX AMPS: | |
| SF AMPS: - | |
| PH: 1 | HZ: 60 |
| INS: B | AMB: 50°C |
| DUTY: CONT | |
| ENCLOSURE: ODP | |
| THERMALLY PROTECTED | |



1. HOLE DIAMETER IS CONCENTRIC WITH SHAFT CENTERLINE WITHIN .004 T.I.R.
2. FACE OF MOUNTING FLANGE IS PERPENDICULAR TO SHAFT CENTERLINE WITHIN .004 T.I.R.
3. SHAFT RUNOUT NOT TO EXCEED .002 T.I.R.
4. END PLAY NOT TO EXCEED .010 MEASURED WITH NO THRUST



| PERFORMANCE CURVE | APPROVED SAMPLE |
|-------------------|-----------------|
| 15530311 | |
| UL COMPONENT | CSA |
| FILE# | CCN# |
| PENDING | PENDING |
| FILE# | GUIDE# |
| PENDING | PENDING |
| CUSTOMER | |

| | | | | | | | | | | | | | |
|------|-----|-----|-----|-----|-----|----|-----|------|------|-----|-----|-----|-----|
| 形状公差 | 平面度 | 直线度 | 倾斜度 | 垂直度 | 平行度 | 圆度 | 圆柱度 | 面轮廓度 | 线轮廓度 | 圆跳动 | 位置度 | 同轴度 | 对称度 |
|------|-----|-----|-----|-----|-----|----|-----|------|------|-----|-----|-----|-----|

除另有注明
尺寸公差如下:

| | | | | |
|----|------|-------|--------|--------|
| 英寸 | ±.1 | ±.02 | ±.005 | ±.0005 |
| 毫米 | ±0.5 | ±0.13 | ±0.013 | |

角度 ±.50 度
清理毛刺和尖棱
英寸 .003-.015 毫米 0.1-0.4
内圆角
英寸 .020 毫米 0.5
表面粗糙度
英制 125 米制 3.2
米制尺寸显示在 []

绘图: KHR
批准: 09-02-2005
第三角投影
图纸格式发布日期 02-22-2008
图纸格式版本 F
机密: 本图纸及相关信息所有权归A. O. SMITH公司所有。未经A. O. SMITH公司书面授权, 不得泄露、复制、传播或作其他用途。一版权所有
ASME Y14.5M 1994

AC Smith
ELECTRICAL PRODUCTS COMPANY
A DIVISION OF A. O. SMITH CORPORATION

名称: OUTLINE
图幅: C 图号: 12676-016
比例: NONE 页号: 1