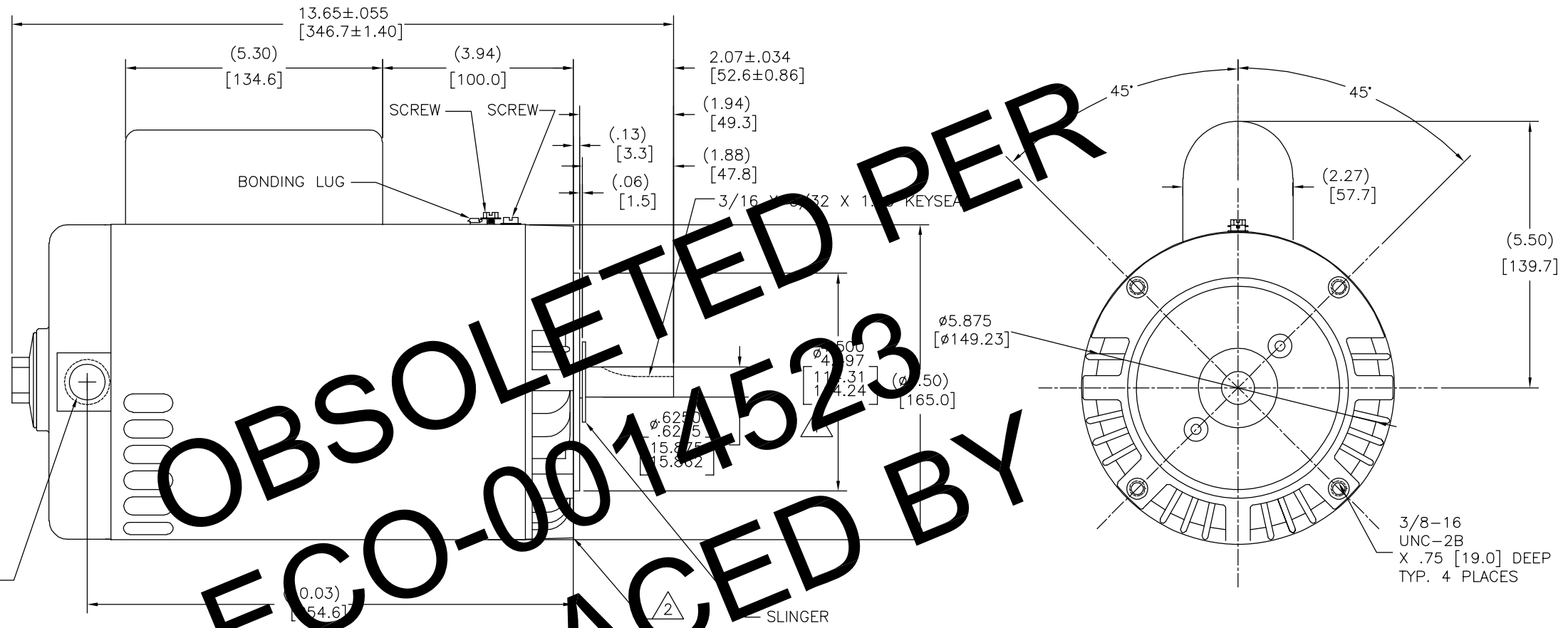
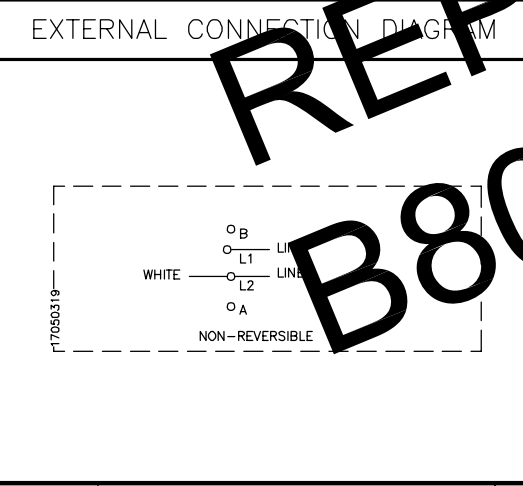


REV	ECO	REV BY	DATE	APPD	DATE
D	0014523	AS	10-21-2010	TZ	10-21-2010



OBSOLETE PER  
ECO-0014523  
REPLACED BY  
B808-S01

NAMEPLATE DATA	
MODEL: 165123	CUST PN: B808
HP: 2.0	SF: 1.20
ROT: CW	
RPM: 3450	
TYPE: CX	CODE: G
FORM:	FRAME: Y 56 C
VOLTS: 208-230	
AMPS: SF 10.4-9.6	
MAX AMPS: ---	
SF AMPS: -	
PH: 1	HZ: 60
INS: B	AMB: 50°C
DUTY: CONT	
ENCLOSURE: ODP	
THERMALLY PROTECTED	



NOTES:

- PILOT DIAMETER TO BE CONCENTRIC WITH SHAFT CENTERLINE WITHIN .004 T.I.R.
- KEYWAY MOUNTING FLANGE IS PERPENDICULAR TO SHAFT CENTERLINE WITHIN .004 T.I.R.
- SHAFT RUNOUT NOT TO EXCEED .002 T.I.R.
- END PLAY NOT TO EXCEED .010 MEASURED WITH NO THRUST
- ALL DIMENSIONS SHOWN IN PARENTHESIS ARE REFERENCE DIMENSIONS.

PERFORMANCE CURVE	APPROVED SAMPLE		
15530311	-----		
UL COMPONENT	CSA		
FILE#	CCN#	FILE#	GUIDE#
E14663	XEWR2	LR4642	4211-01
CUSTOMER	DISTRIBUTION		

GEOMETRIC CHARACTERISTICS & SYMBOLS

- FLATNESS
- STRAIGHTNESS
- ANGULARITY
- PERPENDICULARITY (SQUARENESS)
- PARALLELISM
- ROUNDNESS (CIRCULARITY)
- CYLINDRICITY
- PROFILE OF ANY SURFACE
- PROFILE OF ANY LINE
- RUNOUT
- TRUE POSITION
- CONCENTRICITY
- SYMMETRY

UNLESS OTHERWISE SPECIFIED DIM. TOLERANCES ARE AS FOLLOWS:

INCH ±.1    .XX    .XXX    .XXXX  
 mm ±0.5    ±0.13    ±0.013

ANG. ±.50 DEG

REMOVE BURRS & BREAK SHARP EDGES:  
 INCH .003-.015    mm 0.1-0.4

CORNER FILLETS TO:  
 INCH .020    mm 0.5

MACHINE SURFACES:  
 INCH 125    mm 3.2

METRIC DIMS. SHOWN IN [BRACKETS]

DR BY: TREYES    06-12-2006

APPD:

THIRD ANGLE PROJECTION

EDS DATE    EDS DATE  
 FORMAT    REV    F

CONFIDENTIAL: THIS DRAWING AND ITS INFORMATION ARE THE EXCLUSIVE AND CONFIDENTIAL PROPERTY OF A.O. SMITH CORP. AND ARE NOT TO BE DISCLOSED, DUPLICATED, DISTRIBUTED OR OTHERWISE USED WITHOUT THE WRITTEN CONSENT OF A.O. SMITH CORP.  
 -ALL RIGHTS RESERVED.    ASME Y14.5M 1994

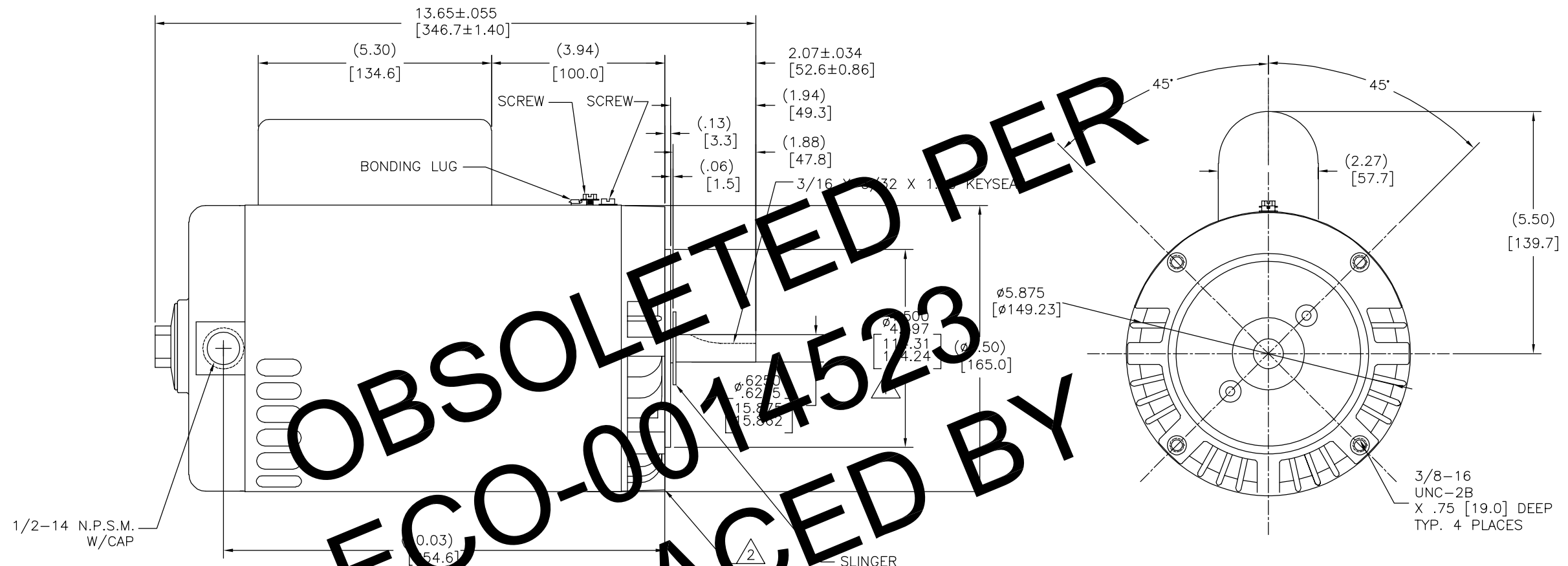
**AC Smith**    **ELECTRICAL PRODUCTS COMPANY**  
 Innovation has a name.    A DIVISION OF A. O. SMITH CORPORATION

DESCRIPTION: **OUTLINE**

SIZE: C    DWG NO: 12741-004

SCALE: NONE    SHEET 1

REVISION:	ECO	REVISADO POR:	FECHA:	APROBADO POR:	FECHA:
D	0014523	AS	10-21-2010	TZ	10-21-2010



OBSOLETE PER  
ECO-0014523  
REPLACED BY  
B808-S01

NAMEPLATE DATA	EXTERNAL CONNECTION DIAGRAM	NOTES:
MODEL: 165123 CUST PN: B808 HP: 2.0 SF: 1.20 ROT: CW RPM: 3450 TYPE: CX CODE: G FORM: FRAME: Y 56 C VOLTS: 208-230 AMPS: SF 10.4-9.6 MAX AMPS: --- SF AMPS: - PH: 1 HZ: 60 INS: B AMB: 50°C DUTY: CONT ENCLOSURE: ODP THERMALLY PROTECTED		1 PILOT DIAMETER CONCENTRIC WITH SHAFT CENTERLINE WITHIN .004 T.I.R. 2 MOUNTING FLANGE IS PERPENDICULAR TO SHAFT CENTERLINE WITHIN .004 T.I.R. 3 SHAFT RUNOUT NOT TO EXCEED .002 T.I.R. 4 END PLAY NOT TO EXCEED .010 MEASURED WITH NO THRUST 5 ALL DIMENSIONS SHOWN IN PARENTHESIS ARE REFERENCE DIMENSIONS.

PERFORMANCE CURVE	APPROVED SAMPLE	CARACTERISTICAS DE GEOMETRIA Y SIMBOLOS	A MENOS QUE SE ESPECIFIQUE DE OTRA MANERA, LAS TOLERANCIAS DE LAS DIMS; SON LAS SIGUIENTES:	DIBUJADO POR:	06-12-2006		<b>ELECTRICAL PRODUCTS COMPANY</b> <small>A DIVISION OF A. O. SMITH CORPORATION</small>
15530311	-----	Z PLANICIDAD - RECTITUD < ANGULARIDAD ⊥ PERPENDICULARIDAD (A ESCUADRA) // PARALELISMO ○ REDONDEZ (CIRCULARIDAD) ∅ CILINDRICIDAD △ PERFIL DE CUALQUIER SUPERFICIE ∩ PERFIL DE CUALQUIER LINEA ↗ VARIACION ⊕ POSICION REAL ⊙ CONCENTRICIDAD = SIMETRIA	PULG ±.1 ±.02 ±.005 ±.0005 mm ±0.5 ±0.13 ±0.013 ANG. ±.50 GRADOS ELIMINAR REBABAS Y ORILLAS FILOSAS DEL BORDE. PULG .003-.015 mm 0.1-0.4 FILETEAR ESQUINA: PULG .020 mm 0.5 MAQUINAR SUPERFICIES PULG 125 mm 3.2 DIMS METRICAS MOSTRADAS [PARENTESIS]	TREYES		<b>ACSmith</b> <small>Innovation has a name.</small>	<b>OUTLINE</b>
UL COMPONENT	CSA			APROBADO POR:			DESCRIPCION:
FILE#	CCN#	FILE#	GUIDE#	TERCER ANGULO DE PROYECCION	FECHA EDS: EDS DATE		TAMAÑO: C
E14663	XEWR2	LR4642	4211-01		REV. FORMATO: F		NUMERO DE DIBUJO: 12741-004
CUSTOMER	DISTRIBUTION						ESCALA: NONE
							HOJA: 1

4

3

2

1

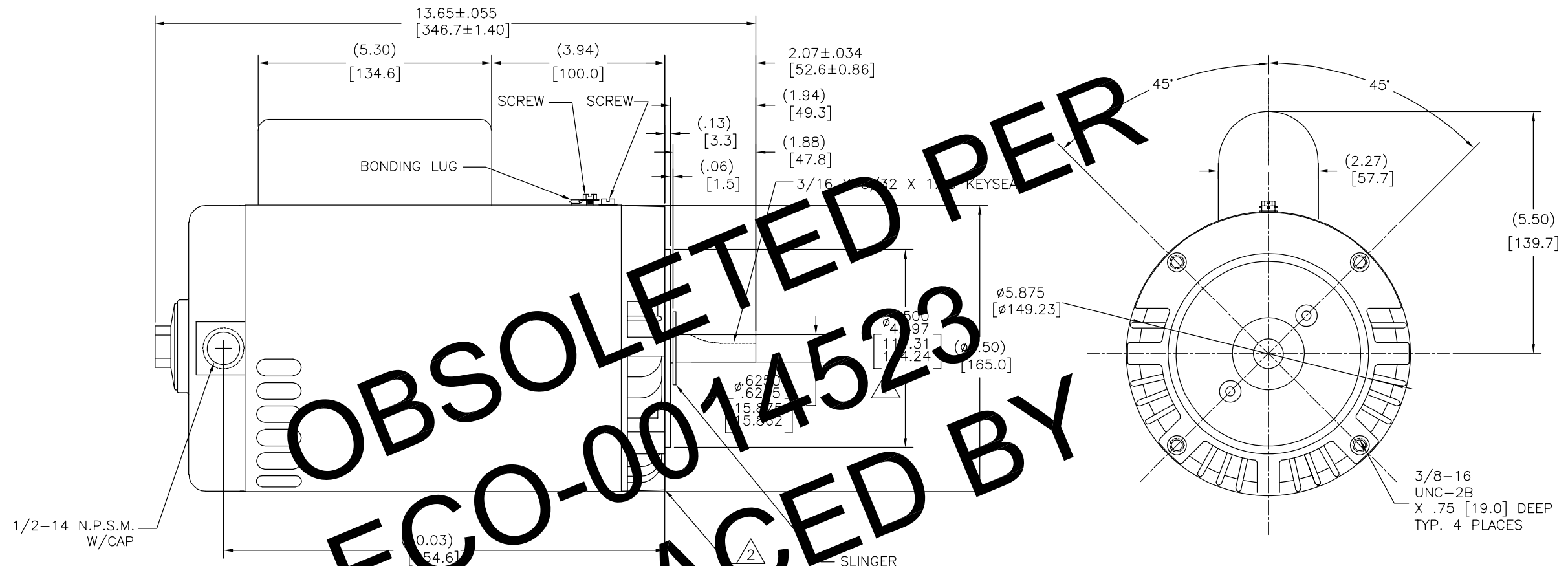
4

3

2

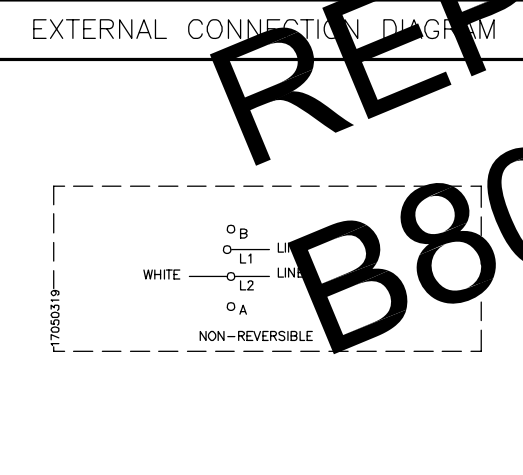
1

版本	ECO	编制	日期	批准	日期
D	0014523	AS	10-21-2010	TZ	10-21-2010



OBSOLETE PER  
ECO-0014523  
REPLACED BY  
B808-S01

NAMEPLATE DATA	
MODEL: 165123	CUST PN: B808
HP: 2.0	SF: 1.20
ROT: CW	
RPM: 3450	
TYPE: CX	CODE: G
FORM:	FRAME: Y 56 C
VOLTS: 208-230	
AMPS: SF 10.4-9.6	
MAX AMPS: ---	
SF AMPS: ---	
PH: 1	HZ: 60
INS: B	AMB: 50°C
DUTY: CONT	
ENCLOSURE: ODP	
THERMALLY PROTECTED	



NOTES:

- PILOT DIAMETER IS CONCENTRIC WITH SHAFT CENTERLINE WITHIN .004 T.I.R.
- KEYWAY MOUNTING FLANGE IS PERPENDICULAR TO SHAFT CENTERLINE WITHIN .004 T.I.R.
- SHAFT RUNOUT NOT TO EXCEED .002 T.I.R.
- END PLAY NOT TO EXCEED .010 MEASURED WITH NO THRUST
- ALL DIMENSIONS SHOWN IN PARENTHESIS ARE REFERENCE DIMENSIONS.

PERFORMANCE CURVE	APPROVED SAMPLE
15530311	-----
UL COMPONENT	CSA
FILE#	CCN#
E14663	XEWR2
FILE#	GUIDE#
LR4642	4211-01
CUSTOMER	DISTRIBUTION

形位公差	除另有注明
□ 平面度	尺寸公差如下:
— 直线度	英寸 X XX XXX XXXX
∠ 倾斜度	英寸 ±.1 ±.02 ±.005 ±.0005
⊥ 垂直度	毫米 ±0.5 ±0.13 ±0.013
∥ 平行度	角度 ±.50 度
○ 圆度	清理毛刺和尖棱
⊙ 圆柱度	英寸 .003-.015 毫米 0.1-0.4
⌒ 面轮廓度	内圆角
⌒ 线轮廓度	英寸 .020 毫米 0.5
⌒ 圆跳动	表面粗糙度
⊕ 位置度	英制 125 米制 3.2
⊙ 同轴度	米制尺寸显示在 [ ]
≡ 对称度	

绘图:	TREYES	06-12-2006
批准:		
第三角投影		图纸格式发布日期 EDS_DATE
		图纸格式版本 F
机密: 本图纸及相关信息所有权归A. O. SMITH公司所有。未经A. O. SMITH公司书面授权, 不得泄露、复制或传播或作其他用途。一版权所有		
	ASME Y14.5M 1994	

<b>ELECTRICAL PRODUCTS COMPANY</b> <small>A DIVISION OF A. O. SMITH CORPORATION</small>	
名称	OUTLINE
图幅	C
图号	12741-004
比例	NONE
页号	1