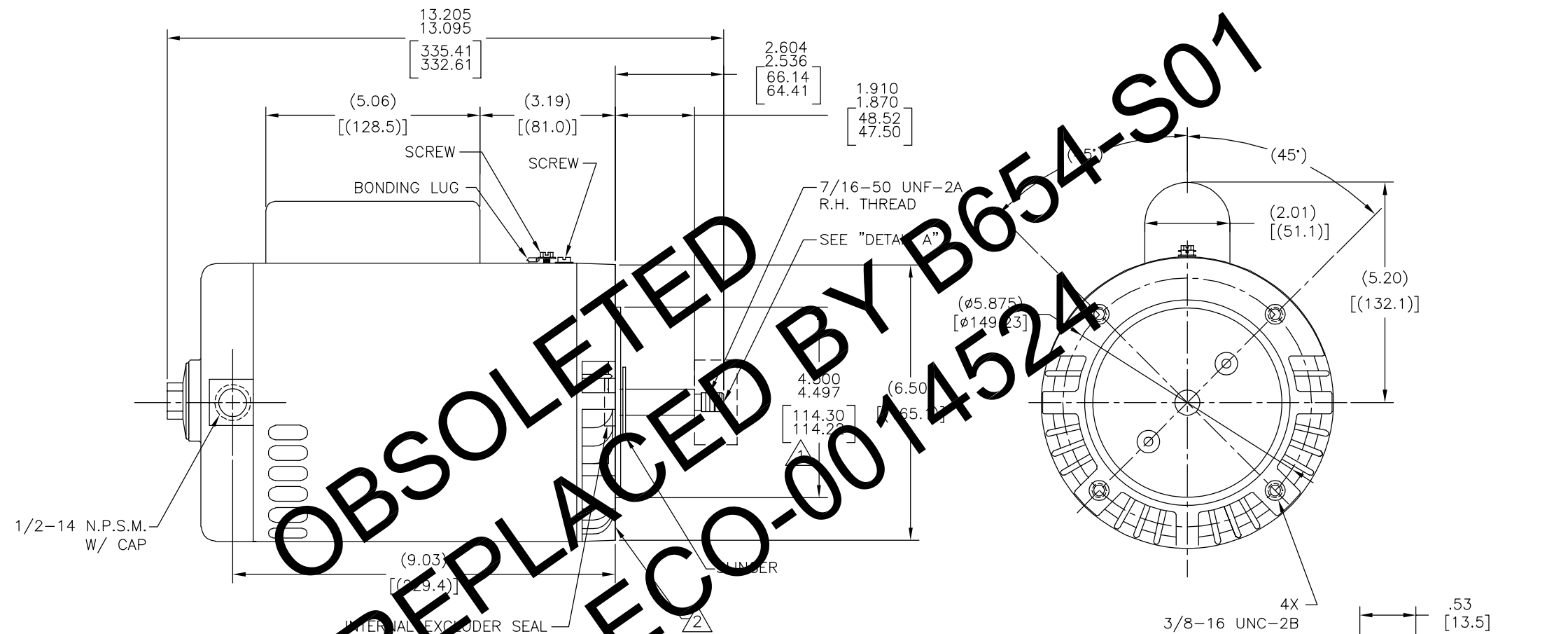
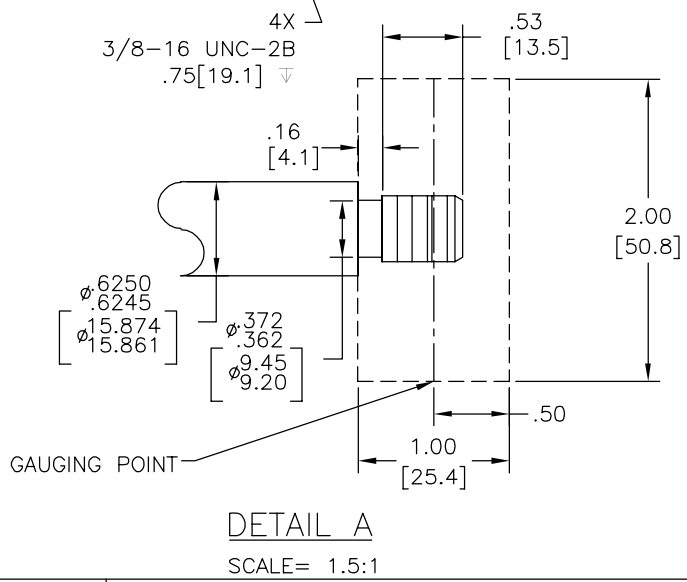


REV	ECO	REV BY	DATE	APPD	DATE
F	0014524	YL	11-01-2010	TZ	11-01-2010



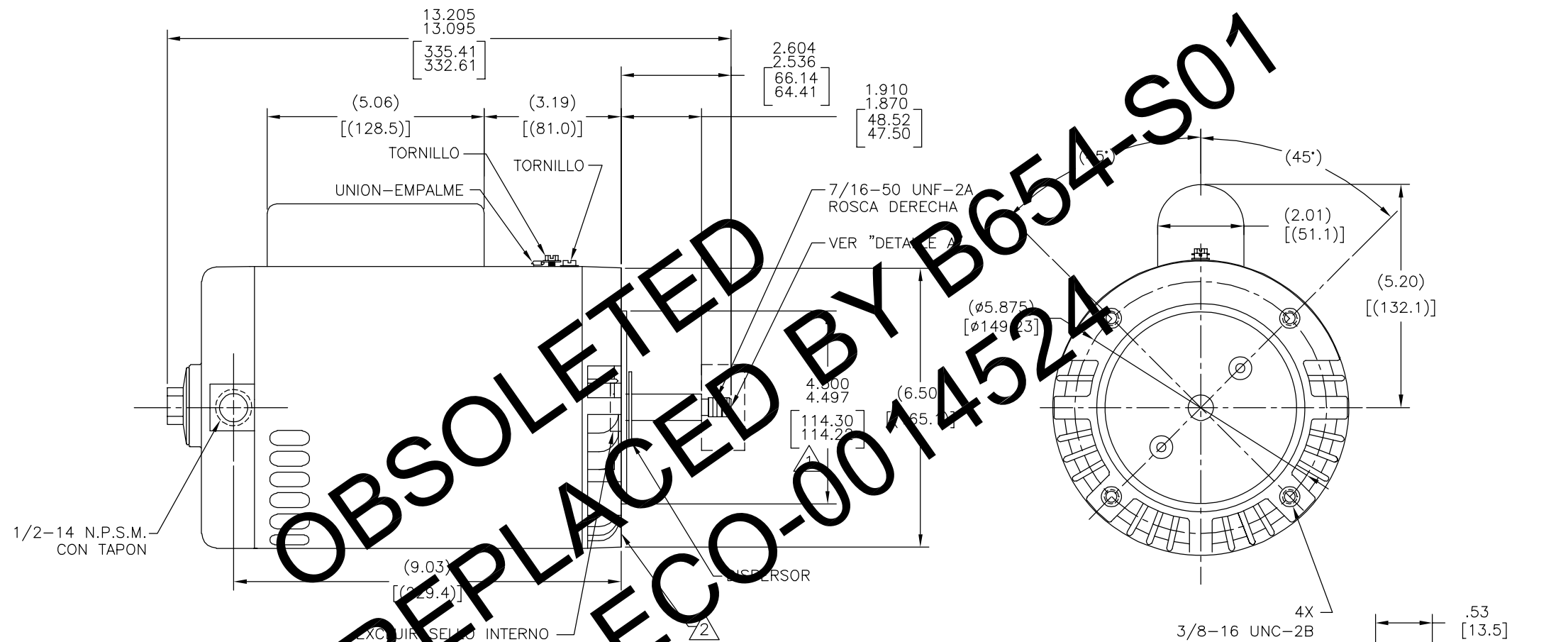
OBSOLETE  
REPLACED BY B654-S01  
PER ECO-0014524

NAMEPLATE DATA	EXTERNAL CONNECTION DIAGRAM	NOTES												
MODEL: 165120 CUST PN: B654 HP: 1.0 SF: 1.40 ROT: CW RPM: 3450 TYPE: CX CODE: J FORM: FRAME: X 56 J VOLTS: 208-230/115 AMPS: MAX AMPS: SF AMPS: 6.4-5.9/11.8 PH: 1 HZ: 60 INS: B AMB: 50°C DUTY: CONT ENCLOSURE: ODP THERMALLY PROTECTED	<table border="0"> <tr> <td style="text-align: center;">LOW VOLTAGE</td> <td style="text-align: center;">HIGH VOLTAGE</td> </tr> <tr> <td style="text-align: center;">BROWN → B</td> <td style="text-align: center;">WHITE → B</td> </tr> <tr> <td style="text-align: center;">→ L1 LINE</td> <td style="text-align: center;">→ L1 LINE</td> </tr> <tr> <td style="text-align: center;">WHITE → L2</td> <td style="text-align: center;">BROWN → L2</td> </tr> <tr> <td style="text-align: center;">→ L2 LINE</td> <td style="text-align: center;">→ L2 LINE</td> </tr> <tr> <td colspan="2" style="text-align: center;">*A NON-REVERSIBLE</td> </tr> </table>	LOW VOLTAGE	HIGH VOLTAGE	BROWN → B	WHITE → B	→ L1 LINE	→ L1 LINE	WHITE → L2	BROWN → L2	→ L2 LINE	→ L2 LINE	*A NON-REVERSIBLE		1. PILOT DIAMETER IS CONCENTRIC WITH SHAFT ± WITHIN .004[.10] T.I.R. 2. FACE OF MOUNTING FLANGE IS PERPENDICULAR TO SHAFT ± WITHIN .004[.10] T.I.R. 3. SHAFT RUNOUT NOT TO EXCEED .002[.05] T.I.R 4. END PLAY NOT TO EXCEED .010[.25] MEASURED WITH NO THRUST
LOW VOLTAGE	HIGH VOLTAGE													
BROWN → B	WHITE → B													
→ L1 LINE	→ L1 LINE													
WHITE → L2	BROWN → L2													
→ L2 LINE	→ L2 LINE													
*A NON-REVERSIBLE														

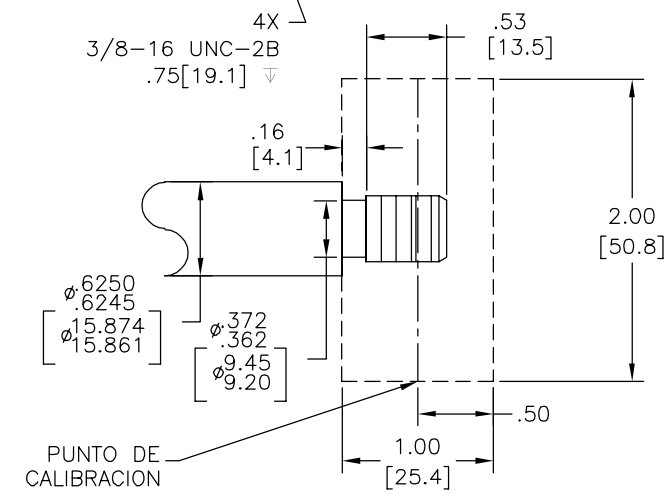


PERFORMANCE CURVE 16380611	APPROVED SAMPLE CSA	GEOMETRIC CHARACTERISTICS & SYMBOLS □ FLATNESS - STRAIGHTNESS < ANGLARITY ⊥ PERPENDICULARITY (SQUARENESS) // PARALLELISM ○ ROUNDNESS (CIRCULARITY) ∅ CYLINDRICITY △ PROFILE OF ANY SURFACE ∩ PROFILE OF ANY LINE ↗ RUNOUT ⊕ TRUE POSITION ⊙ CONCENTRICITY = SYMMETRY	UNLESS OTHERWISE SPECIFIED DIM. TOLERANCES ARE AS FOLLOWS: INCH X XX XXX XXXX INCH ±.1 ±.02 ±.005 ±.0005 mm ±0.5 ±0.13 ±0.013 ANG. ±.50 DEG REMOVE BURRS & BREAK SHARP EDGES: INCH .003-.015 mm 0.1-0.4 CORNER FILLETS TO: INCH .020 mm 0.5 MACHINE SURFACES: INCH 125 mm 3.2 METRIC DIMS. SHOWN IN [BRACKETS]	DR BY: KHR 09-01-2005 APPD: EDS DATE 02-22-2008 FORMAT REV F	<b>AC Smith</b> Innovation has a name. <b>ELECTRICAL PRODUCTS COMPANY</b> A DIVISION OF A. O. SMITH CORPORATION
UL COMPONENT	CSA			THIRD ANGLE PROJECTION	DESCRIPTION OUTLINE
FILE# E14663	CCN# XEWR2	FILE# LR4642	GUIDE# 4211-01		SIZE C DWG NO 12676-012
CUSTOMER	DISTRUBUTION			SCALE NONE	SHEET 1

REVISION:	ECO	REVISADO POR:	FECHA:	APROBADO POR:	FECHA:
F	0014524	YL	11-01-2010	TZ	11-01-2010



OBSOLETE  
REPLACED BY B654-S01  
PER ECO-0014524

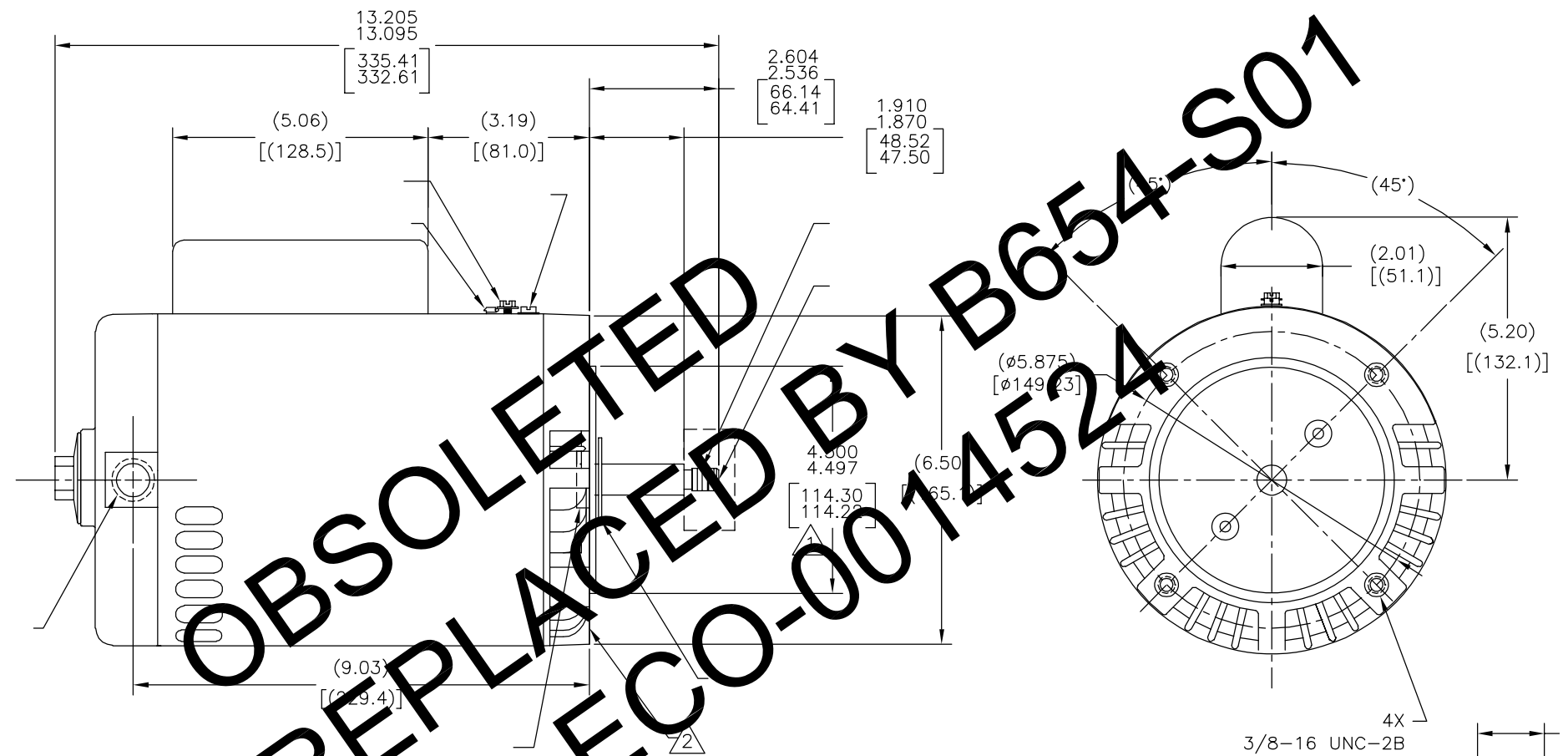


DETAIL A  
SCALE= 1.5:1

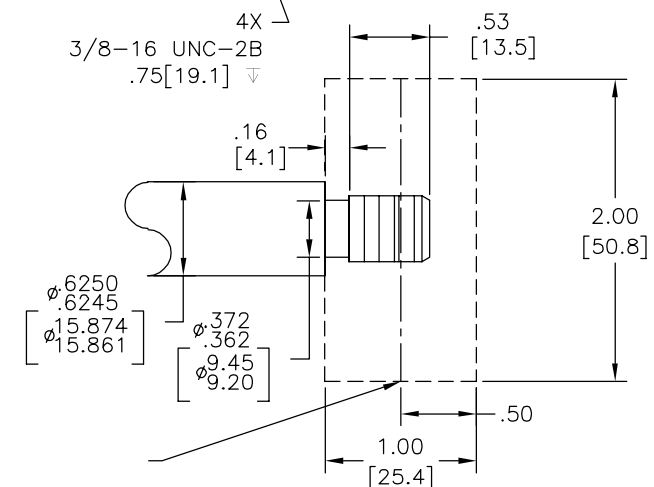
NAMEPLATE DATA	EXTERNAL CONNECTION DIAGRAM	NOTES
MODEL: 165120 CUST PN: B654 HP: 1.0 SF: 1.40 ROT: CW RPM: 3450 TYPE: CX CODE: J FORM: FRAME: X 56 J VOLTS: 208-230/115 AMPS: MAX AMPS: SF AMPS: 6.4-5.9/11.8 PH: 1 HZ: 60 INS: B AMB: 50°C DUTY: CONT ENCLOSURE: ODP THERMALLY PROTECTED		<ol style="list-style-type: none"> <li>1. EL DIAMETRO DEL PILOTO ES CONCENTRICO A LA DE LA FLECHA DENTRO DE .004[.10] L.T.I.</li> <li>2. LA CARA DEL REBORDE ES PERPENDICULAR A LA DE LA FLECHA DENTRO DE .004[.10] L.T.I.</li> <li>3. LA OSCILACION DE LA FLECHA NO DEBE EXCEDER EL .002[.05] L.T.I.</li> <li>4. EL JUEGO AXIAL NO DEBE EXCEDER .010[.25] AL MEDIRSE SIN CONFIABILIDAD</li> </ol>

PERFORMANCE CURVE	APPROVED SAMPLE	CARACTERISTICAS DE GEOMETRIA Y SIMBOLOS	A MENOS QUE SE ESPECIFIQUE DE OTRA MANERA, LAS TOLERANCIAS DE LAS DIMS; SON LAS SIGUIENTES:	DIBUJADO POR: KHR	09-01-2005	<b>ELECTRICAL PRODUCTS COMPANY</b> <small>A DIVISION OF A. O. SMITH CORPORATION</small>
16380611	CSA	Z PLANICIDAD - RECTITUD < ANGULARIDAD ⊥ PERPENDICULARIDAD (A ESCUADRA) // PARALELISMO ○ REDONDEZ (CIRCULARIDAD) ∅ CILINDRICIDAD △ PERFIL DE CUALQUIER SUPERFICIE ∩ PERFIL DE CUALQUIER LINEA / VARIACION ⊕ POSICION REAL ⊙ CONCENTRICIDAD = SIMETRIA	PULG ±.1 ±.02 ±.005 ±.0005 mm ±0.5 ±0.13 ±0.013 ANG. ±.50 GRADOS ELIMINAR REBABAS Y ORILLAS FILOSAS DEL BORDE. PULG .003-.015 mm 0.1-0.4 FILETEAR ESQUINA: PULG .020 mm 0.5 MAQUINAR SUPERFICIES PULG 125 mm 3.2 DIMS METRICAS MOSTRADAS [PARENTESIS]	APROBADO POR:		
UL COMPONENT				TERCER ANGULO DE PROYECCION	FECHA EDS: 02-22-2008	TAMAÑO: C
FILE#	CCN#	FILE#	GUIDE#		REV. FORMATO: F	NUMERO DE DIBUJO: 12676-012
E14663	XEWR2	LR4642	4211-01			ESCALA: NONE
CUSTOMER	DISTRUBUTION					HOJA: 1

版本	ECO	编制	日期	批准	日期
F	0014524	YL	11-01-2010	TZ	11-01-2010



OBSOLETE  
REPLACED BY B654-S01  
PER ECO-0014524



NAMEPLATE DATA	EXTERNAL CONNECTION DIAGRAM	NOTES
MODEL: 165120 CUST PN: B654 HP: 1.0 SF: 1.40 ROT: CW RPM: 3450 TYPE: CX CODE: J FORM: FRAME: X 56 J VOLTS: 208-230/115 AMPS: MAX AMPS: SF AMPS: 6.4-5.9/11.8 PH: 1 HZ: 60 INS: B AMB: 50°C DUTY: CONT ENCLOSURE: ODP THERMALLY PROTECTED	<p>LOW VOLTAGE HIGH VOLTAGE</p> <p>BROWN → B WHITE → B</p> <p>WHITE → L1 LINE L1 → LINE</p> <p>WHITE → L2 LINE BROWN → A</p> <p>*A NON-REVERSIBLE</p>	

PERFORMANCE CURVE	APPROVED SAMPLE	形位公差 □ 平面度 — 直线度 ∠ 倾斜度 ⊥ 垂直度 ∥ 平行度 ○ 圆度 ⊙ 圆柱度 ⌒ 面轮廓度 — 线轮廓度 ⊖ 圆跳动 ⊕ 位置度 ⊗ 同轴度 = 对称度	除另有注明 尺寸公差如下: 英寸 X XX XXX XXXX 毫米 ±.1 ±.02 ±.005 ±.0005 毫米 ±0.5 ±0.13 ±0.013 角度 ±.50 度 清理毛刺和尖棱 英寸 .003-.015 毫米 0.1-0.4 内圆角 英寸 .020 毫米 0.5 表面粗糙度 英制 125 米制 3.2 米制尺寸显示在 [ ]	绘图: KHR 批准: 第三角投影	09-01-2005 图纸格式发布日期 02-22-2008 图纸格式版本 F	ASME Y14.5M 1994	<p><b>ELECTRICAL PRODUCTS COMPANY</b> A DIVISION OF A. O. SMITH CORPORATION</p>
16380611	CSA			名称: OUTLINE			图幅: C 图号: 12676-012
FILE# CCN# FILE# GUIDE#				比例: NONE			页号: 1
E14663 XEWR2 LR4642 4211-01							
CUSTOMER	DISTRUBUTION						

4 3 2 1

4 3 2 1