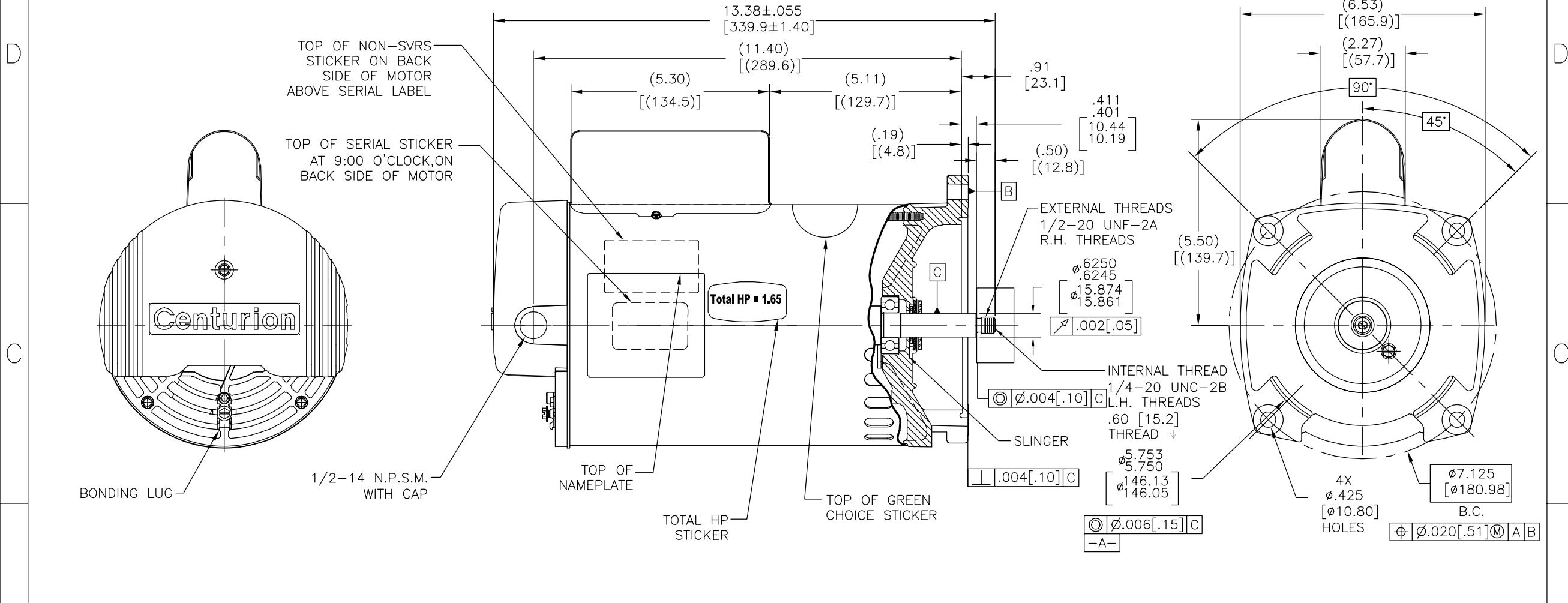


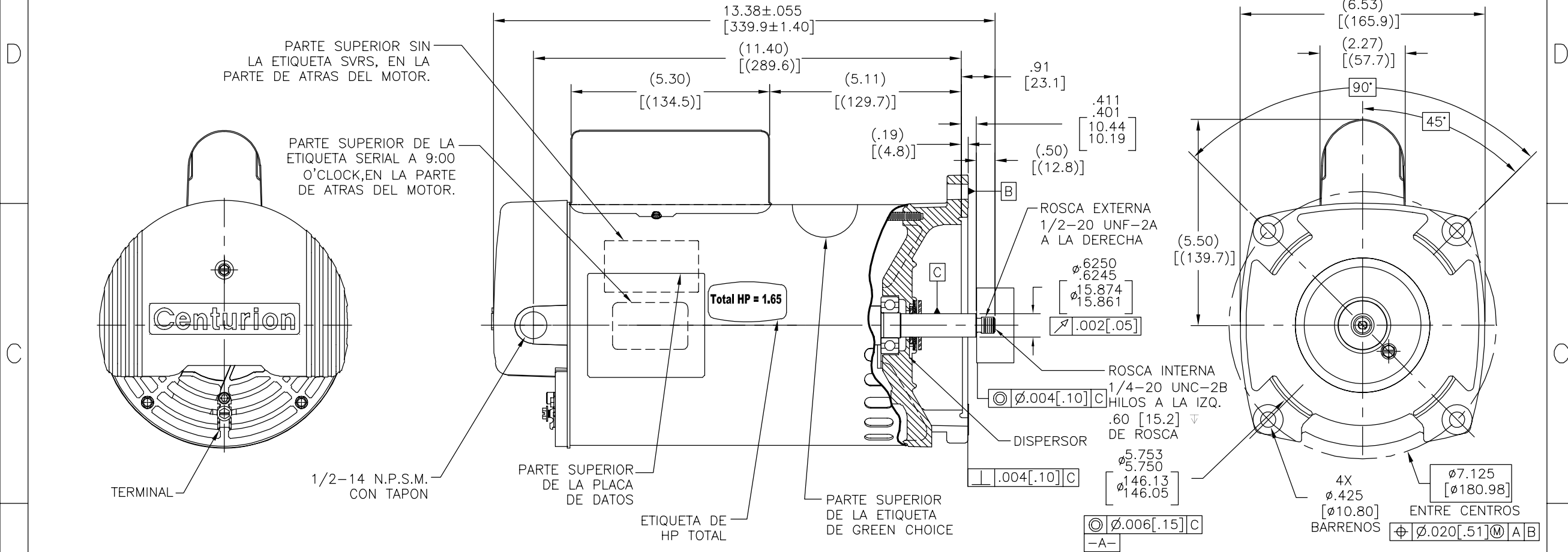
REV	ECO	REV BY	DATE	APPD	DATE
K	0025532	J.AGUILERA	04-25-2012	R.RASCON	04-25-2012



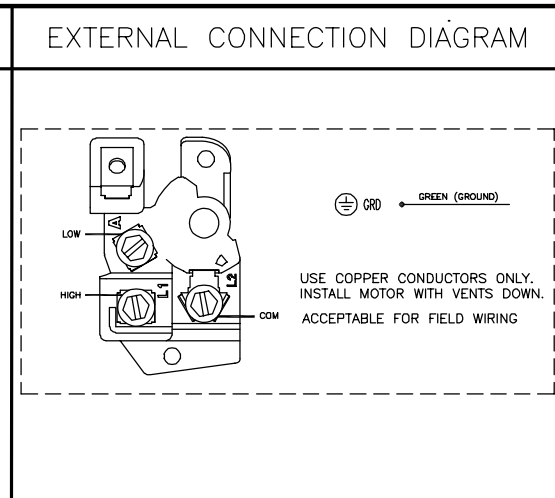
NAMEPLATE DATA	EXTERNAL CONNECTION DIAGRAM	NOTES
MODEL: 196443 CUST PN: B2982 HP: 1.0/.12 SF: 1.65 ROT: CCWPE RPM: 3450/1725 TYPE: CXCP CODE: K FORM: KJM FRAME: Y56Y VOLTS: 230 AMPS: MAX AMPS: SF AMPS: 7.4/1.4 PH: 1 HZ: 60 INS: F AMB: 50°C DUTY: CONT ENCLOSURE: ODP THERMALLY PROTECTED		1. FOR THREADED SHAFT EXT. ECCENTRICITY OF THREADED PORTION OF SHAFT IS HELD WITHIN .004[.10] TOTAL GAGE READING WITH THE INDICATOR ON O.D. OF GROUND RING GAGE AS SHOWN. THE GAGE BEING STATIONARY WITH RESPECT TO THE ROTOR. 2. END PLAY NOT TO EXCEED .010[.25] MEASURED WITH NO THRUST. 3. ALL DIMENSIONS SHOWN IN PARENTHESIS ARE REFERENCE DIMENSIONS. 4. FINISH PAINT TO BE BLACK. 5. 1.65 SF HP

<table border="1"> <tr> <th>PERFORMANCE CURVE</th> <th>APPROVED SAMPLE</th> </tr> <tr> <td>0116753</td> <td>0701615</td> </tr> <tr> <th>UL COMPONENT</th> <td>CSA</td> </tr> <tr> <th>FILE#</th> <th>CCN#</th> <th>FILE#</th> <th>GUIDE#</th> </tr> <tr> <td>E44549</td> <td>PRGY2</td> <td>LR4642</td> <td>4211-01</td> </tr> <tr> <th>CUSTOMER</th> <td colspan="3">DISTRIBUTION</td> </tr> </table>	PERFORMANCE CURVE	APPROVED SAMPLE	0116753	0701615	UL COMPONENT	CSA	FILE#	CCN#	FILE#	GUIDE#	E44549	PRGY2	LR4642	4211-01	CUSTOMER	DISTRIBUTION			GEOMETRIC CHARACTERISTICS & SYMBOLS □ FLATNESS — STRAIGHTNESS < ANGULARITY ⊥ PERPENDICULARITY (SQUARENESS) // PARALLELISM ○ ROUNDNESS (CIRCULARITY) ∅ CYLINDRICITY ∩ PROFILE OF ANY SURFACE ∩ PROFILE OF ANY LINE ↑ RUNOUT ⊕ TRUE POSITION ⊙ CONCENTRICITY = SYMMETRY ASME Y14.5M 1994	UNLESS OTHERWISE SPECIFIED DIM. TOLERANCES ARE AS FOLLOWS: X XX XXX XXXX INCH ±.1 ±.02 ±.005 ±.0005 mm ±0.5 ±0.13 ±0.013 ANG. ±50 DEG REMOVE BURRS & BREAK SHARP EDGES: INCH .003-.015 mm 0.1-0.4 CORNER FILLETS TO: INCH .020 mm 0.5 MACHINE SURFACES: INCH 125 mm 3.2 METRIC DIMS. SHOWN IN [BRACKETS]	DR BY: keyun.gong 08-08-2008 APPD: R. Jevon 08-08-2008 EDS DATE 11-11-2011 FORMAT REV G THIRD ANGLE PROJECTION	
PERFORMANCE CURVE	APPROVED SAMPLE																					
0116753	0701615																					
UL COMPONENT	CSA																					
FILE#	CCN#	FILE#	GUIDE#																			
E44549	PRGY2	LR4642	4211-01																			
CUSTOMER	DISTRIBUTION																					
CONFIDENTIAL: THIS DRAWING AND ITS INFORMATION ARE THE EXCLUSIVE AND CONFIDENTIAL PROPERTY OF REGAL-BELOIT CORPORATION AND ARE NOT TO BE DISCLOSED, DUPLICATED, DISTRIBUTED OR OTHERWISE USED WITHOUT THE WRITTEN CONSENT OF REGAL-BELOIT CORPORATION. -ALL RIGHTS RESERVED.				DESCRIPTION: MODEL-PFHP-56FR OUTLINE SIZE: C DWG NO: B2982 SCALE: NONE SHEET: 1																		

REVISION:	ECO	REVISADO POR:	FECHA:	APROBADO POR:	FECHA:
K	0025532	J.AGUILERA	04-25-2012	R.RASCON	04-25-2012



NAMEPLATE DATA	
MODEL: 196443	CUST PN: B2982
HP: 1.0/.12	SF: 1.65
ROT: CCWPE	
RPM: 3450/1725	
TYPE: CXCP	CODE: K
FORM: KJM	FRAME: Y56Y
VOLTS: 230	
AMPS:	
MAX AMPS:	
SF AMPS: 7.4/1.4	
PH: 1	HZ: 60
INS: F	AMB: 50°C
DUTY: CONT	
ENCLOSURE: ODP	
THERMALLY PROTECTED	



- NOTES
1. PARA EXT. DE FLECHA ROSCADA LA EXCENTRICIDAD DE LA ROSCA DE LA FLECHA ES SOSTENIDA DENTRO .004[.10] LECTURA TOTAL DEL ESCANTILLON CON EL INDICADOR SOBRE EL DIAM. EXTERNO DEL ANILLO DE TIERRA COMO SE MUESTRA. EL ESCANTILLON SERA ESTACIONARIO CON RESPECTO AL ROTOR.
 2. JUEGO AXIAL NO EXCEDERA .010[.25] MEDIDA SIN EMPUJE.
 3. TODAS LAS DIMENSIONES MOSTRADAS EN PARENTESIS SON DIMENSIONES DE REFERENCIA
 4. EL ACABADO DE LA PINTURA SERA NEGRO.
 5. 1.65 SF HP

PERFORMANCE CURVE	APPROVED SAMPLE		
0116753	0701615		
UL COMPONENT	CSA		
FILE#	CCN#	FILE#	GUIDE#
E44549	PRGY2	LR4642	4211-01
CUSTOMER	DISTRIBUTION		

- CARACTERISTICAS DE GEOMETRIA Y SIMBOLOS
- PLANICIDAD
 - RECTITUD
 - ∠ ANGULARIDAD
 - ⊥ PERPENDICULARIDAD (A ESCUADRA)
 - ∥ PARALELISMO
 - REDONDEZ (CIRCULARIDAD)
 - ⊘ CILINDRICIDAD
 - ⌒ PERFIL DE CUALQUIER SUPERFICIE
 - ⌒ PERFIL DE CUALQUIER LINEA
 - ↑ VARIACION
 - ⊙ POSICION REAL
 - ⊕ CONCENTRICIDAD
 - = SIMETRIA
- ASME Y14.5M 1994

A MENOS QUE SE ESPECIFIQUE DE OTRA MANERA, LAS TOLERANCIAS DE LAS DIMS: SON LAS SIGUIENTES:

PULG ±.1 ±.02 ±.005 ±.0005
 mm ±0.5 ±0.13 ±0.013

ANG. ±.50 GRADOS

ELIMINAR REBABAS Y ORILLAS FILOSAS DEL BORDE.

PULG .003-.015 mm 0.1-.04

FILETEAR ESQUINA: PULG .020 mm 0.5

MAQUINAR SUPERFICIES
 PULG 125 mm .32

DIMS METRICAS MOSTRADAS [PARENTESIS]

DIBUJADO POR: keyun.gong 08-08-2008

APROBADO POR: R. Jevon 08-08-2008

TERCER ANGULO DE PROYECCION

FECHA EDS: 11-11-2011
 REV. FORMATO: G

CONFIDENCIAL: ESTE DIBUJO Y SU INFORMACION SON PROPIEDAD DE USO EXCLUSIVO Y CONFIDENCIAL DE REGAL-BELOIT CORPORATION. Y NO DEBERAN SER REVELADOS, DUPLICADOS, DISTRIBUIDOS O USARSE DE OTRA MANERA SIN EL CONSENTIMIENTO ESCRITO DE REGAL-BELOIT CORPORATION. -TODOS LOS DERECHOS RESERVADOS.

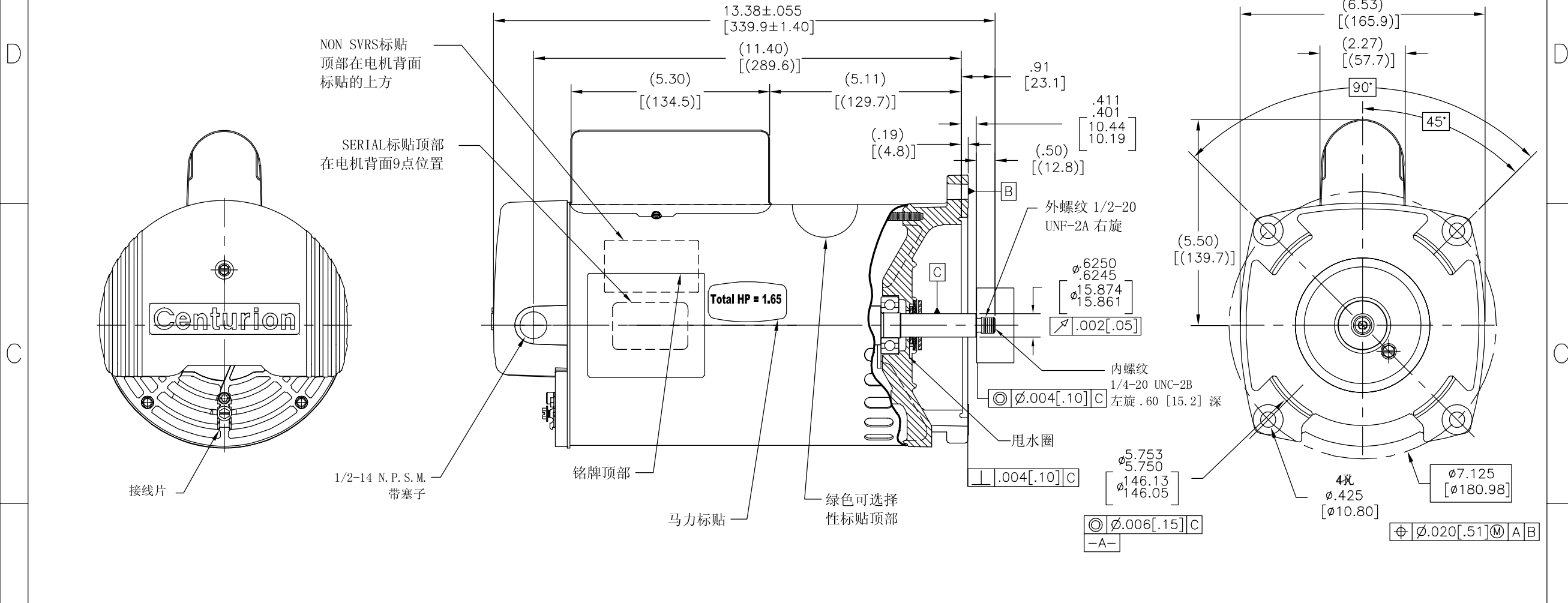
REGAL-BELOIT CORPORATION

DESCRIPCION: MODEL-PFHP-56FR OUTLINE

TAMAÑO: C NUMERO DE DIBUJO: B2982

ESCALA: NONE HOJA: 1

版本	ECO	编制	日期	批准	日期
K	0025532	J.AGUILERA	04-25-2012	R.RASCON	04-25-2012



NAMEPLATE DATA	EXTERNAL CONNECTION DIAGRAM	NOTES
MODEL: 196443 CUST PN: B2982 HP: 1.0/.12 SF: 1.65 ROT: CCWPE RPM: 3450/1725 TYPE: CXCP CODE: K FORM: KJM FRAME: Y56Y VOLTS: 230 AMPS: MAX AMPS: SF AMPS: 7.4/1.4 PH: 1 HZ: 60 INS: F AMB: 50°C DUTY: CONT ENCLOSURE: ODP THERMALLY PROTECTED		1. 量规测量方法如图所示，螺纹外径与中心的同心度为.004[.10] 2. 轴向窜动不超过.010[.25] 3. 括号内尺寸为参考尺寸。 4. 表面为黑色喷漆。 6. 1.65 SF HP

PERFORMANCE CURVE	APPROVED SAMPLE	形位公差	
0116753	0701615	□ 平面度 — 直线度 < 倾斜度 ⊥ 垂直度 ∥ 平行度 ○ 圆度 ⊘ 圆柱度 ⌒ 面轮廓度 — 线轮廓度 ⤴ 圆跳动 ⊙ 位置度 ⊖ 同轴度 ≡ 对称度	
UL COMPONENT	CSA	除另有注明 尺寸公差如下: 英寸 X XX XXX XXXX ±.1 ±.02 ±.005 ±.0005 毫米 ±0.5 ±0.13 ±0.013 角度 ±.50 度 清理毛刺和尖棱 英寸 .003-.015 毫米 0.1-0.4 内圆角 英寸 .020 毫米 0.5 表面粗糙度 英制 125 米制 3.2	
FILE#	CCN#	FILE#	GUIDE#
E44549	PRGY2	LR4642	4211-01
CUSTOMER	DISTRIBUTION		

绘图:	keyun.gong	08-08-2008
批准:	R. Jevon	08-08-2008
第三角投影	图纸格式发布日期 11-11-2011 图纸格式版本 G	
机密: 本图纸及相关信息所有权归REGAL-BELOIT CORPORATION。 未经REGAL-BELOIT CORPORATION书面授权，不得泄露、复制、传播或作其他用途。—版权所有		

名称	
MODEL-PFHP-56FR OUTLINE	
图幅	图号
C	B2982
比例	页号
NONE	1

4

3

2

1

4

3

2

1