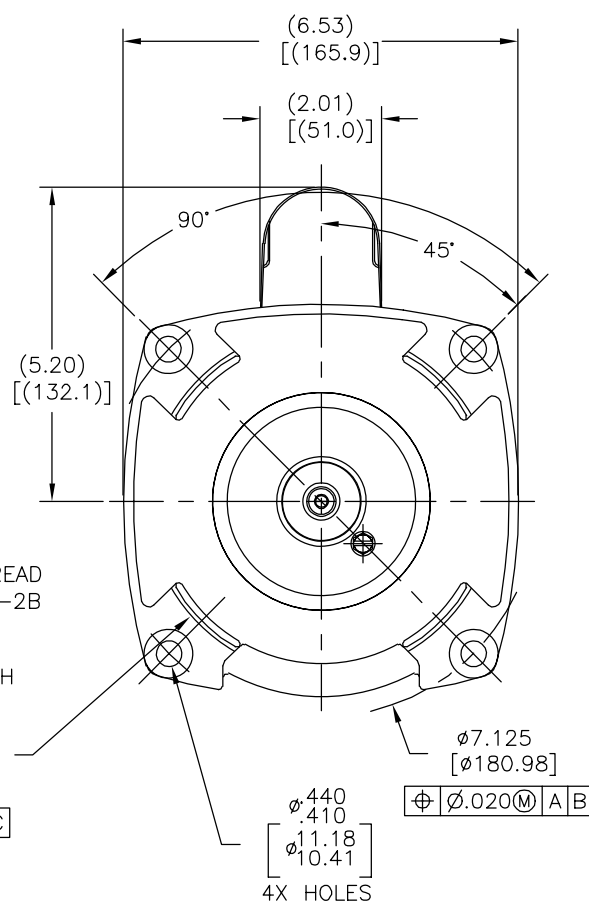
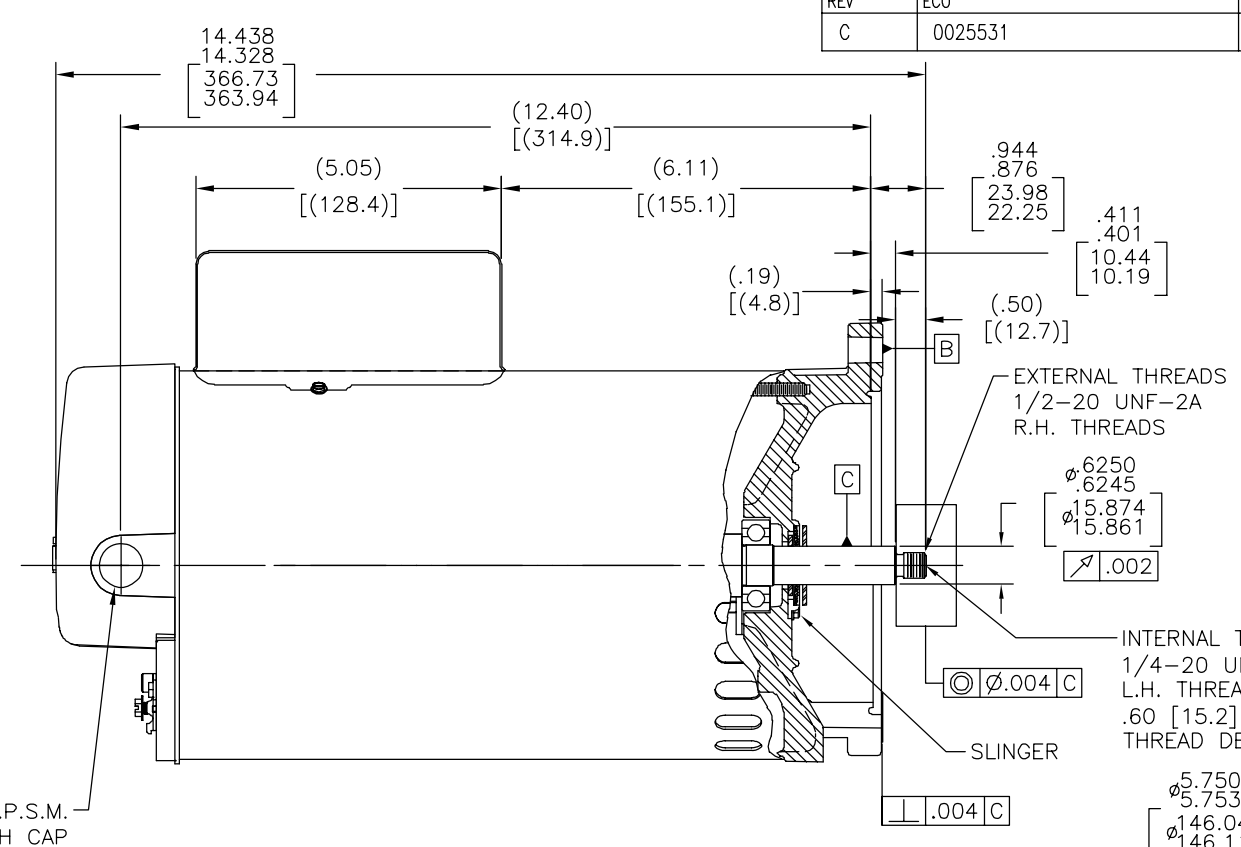
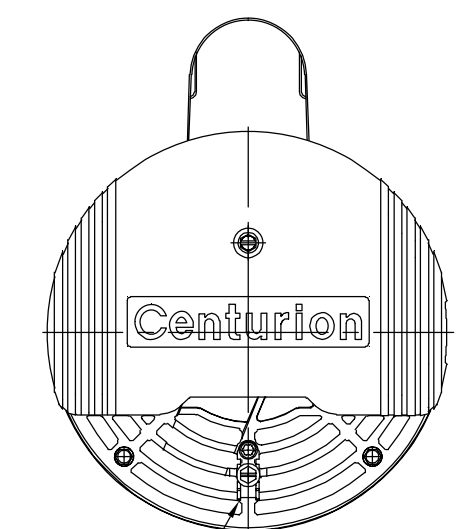


REV	ECO	REV BY	DATE	APPD	DATE
C	0025531	F.NAVARRO	04-24-2012	R.RASCON	04-24-2012



BONDING LUG
1/2-14 N.P.S.M. WITH CAP

EXTERNAL THREADS
1/2-20 UNF-2A
R.H. THREADS
INTERNAL THREAD
1/4-20 UNC-2B
L.H. THREADS
SLINGER
THREAD DEPTH

NAMEPLATE DATA	EXTERNAL CONNECTION DIAGRAM	NOTES
MODEL: F56AA41A01 CUST PN: B2859 HP: 2.00 SF: 1.10 ROT: CCWPE RPM: 3450 TYPE: CX CODE: G FORM: FRAME: Y 56 Y VOLTS: 230/115 AMPS: - MAX AMPS: SF AMPS: 10.5/21.0 PH: 1 HZ: 60 INS: F AMB: 50 C DUTY: CONT ENCLOSURE: ODP THERMALLY PROTECTED	<p>HIGH VOLTAGE SHOWN. ROTATE DIAL CCW TO 115 FOR LOW VOLTAGE. USE COPPER CONDUCTORS ONLY. INSTALL MOTOR WITH VENTS DOWN. ACCEPTABLE FOR FIELD WIRING</p>	<ol style="list-style-type: none"> FOR THREADED SHAFT EXTENSION ECCENTRICITY OF THREADED PORTION OF SHAFT IS HELD WITHIN .004[.10] TOTAL GAGE READING WITH THE INDICATOR ON O.D. OF GROUND RING GAGE AS SHOWN. THE GAGE BEING STATIONARY WITH RESPECT TO THE ROTOR. END PLAY NOT TO EXCEED .010[.25] MEASURED WITH NO THRUST. FINISH PAINT TO BE BLACK.

PERFORMANCE CURVE	APPROVED SAMPLE		
16387811	B2858		
UL COMPONENT	CSA		
FILE#	CCN#	FILE#	GUIDE#
PENDING	PENDING	PENDING	PENDING
CUSTOMER	DISTRIBUTION		

GEOMETRIC CHARACTERISTICS & SYMBOLS
 □ FLATNESS
 - STRAIGHTNESS
 < ANGLARITY
 ⊥ PERPENDICULARITY (SQUARENESS)
 // PARALLELISM
 ○ ROUNDNESS (CIRCULARITY)
 ∅ CYLINDRICITY
 △ PROFILE OF ANY SURFACE
 ∩ PROFILE OF ANY LINE
 ↑ RUNOUT
 ⊕ TRUE POSITION
 ⊙ CONCENTRICITY
 = SYMMETRY
 ASME Y14.5M 1994

UNLESS OTHERWISE SPECIFIED DIM. TOLERANCES ARE AS FOLLOWS:
 INCH X XX XXX XXXX
 ±.1 ±.02 ±.005 ±.0005
 mm ±0.5 ±0.13 ±0.013
 ANG. ±.50 DEG
 REMOVE BURRS & BREAK SHARP EDGES:
 INCH .003-.015 mm 0.1-0.4
 CORNER FILLETS TO:
 INCH .020 mm 0.5
 MACHINE SURFACES:
 INCH 125 mm 3.2
 METRIC DIMS. SHOWN IN [BRACKETS]

DR BY: JLHESS 06-11-2009
 APPD: D.FOX 06-11-2009
 THIRD ANGLE PROJECTION
 EDS DATE 11-11-2011
 FORMAT REV G
 CONFIDENTIAL: THIS DRAWING AND ITS INFORMATION ARE THE EXCLUSIVE AND CONFIDENTIAL PROPERTY OF REGAL-BELOIT CORPORATION AND ARE NOT TO BE DISCLOSED, DUPLICATED, DISTRIBUTED OR OTHERWISE USED WITHOUT THE WRITTEN CONSENT OF REGAL-BELOIT CORPORATION. -ALL RIGHTS RESERVED.

DESCRIPTION	OUTLINE
SIZE	C
DWG NO	B2859
SCALE	NONE
SHEET	1

4

3

2

1

4

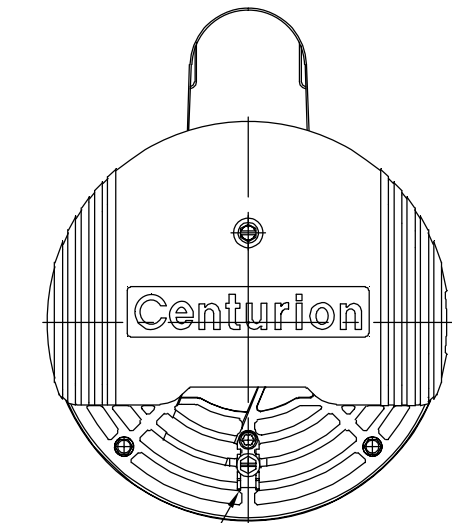
3

2

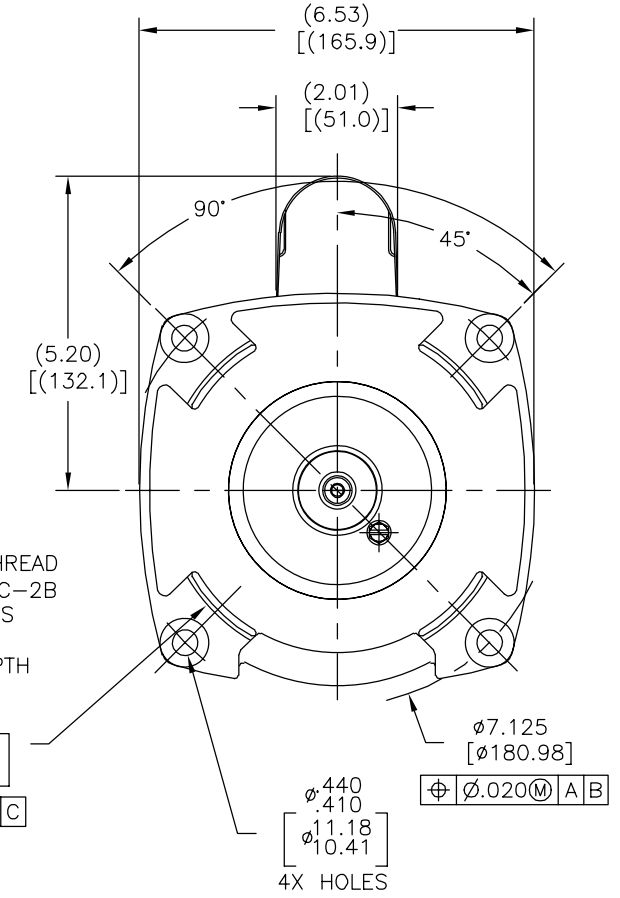
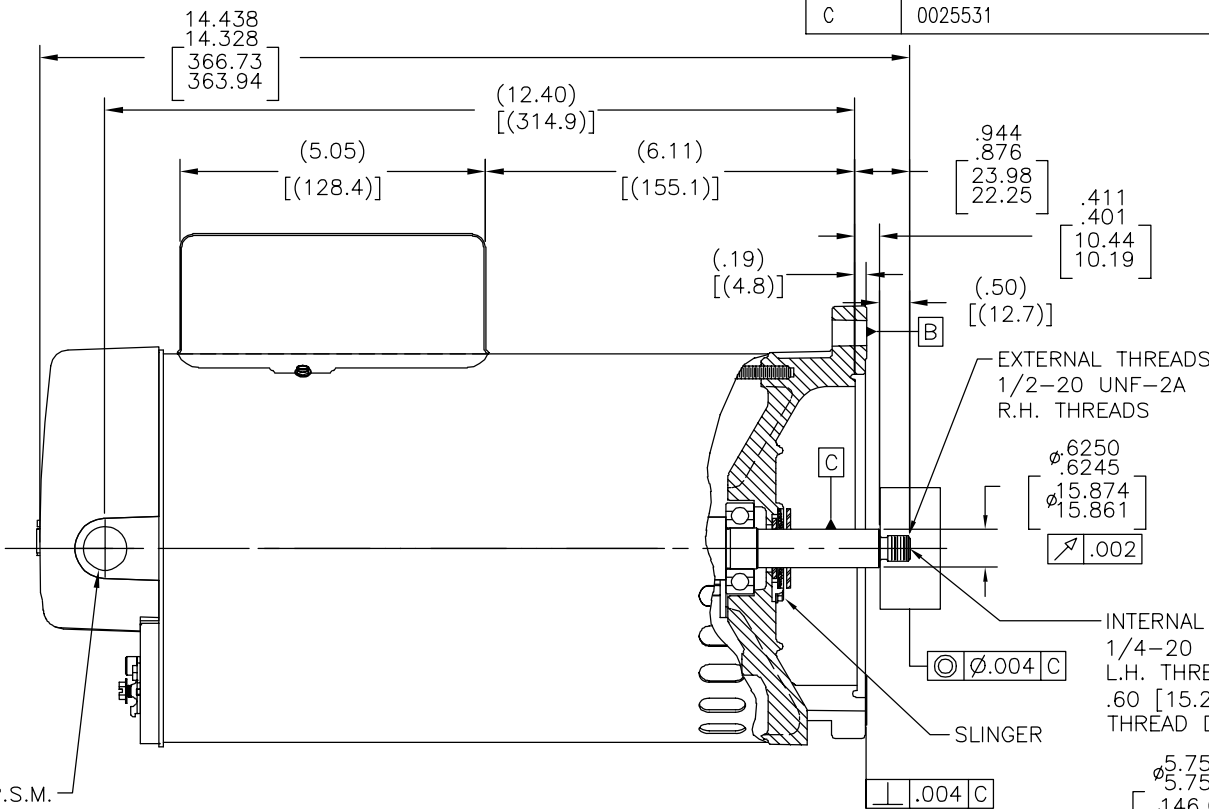
1

Uncontrolled Copy

REVISION: ECO	REVISADO POR: F.NAVARRO	FECHA: 04-24-2012	APROBADO POR: R.RASCON	FECHA: 04-24-2012
C	0025531			



BONDING LUG
1/2-14 N.P.S.M. WITH CAP



NAMEPLATE DATA	EXTERNAL CONNECTION DIAGRAM	NOTES
MODEL: F56AA41A01 CUST PN: B2859 HP: 2.00 SF: 1.10 ROT: CCWPE RPM: 3450 TYPE: CX CODE: G FORM: FRAME: Y 56 Y VOLTS: 230/115 AMPS: - MAX AMPS: SF AMPS: 10.5/21.0 PH: 1 HZ: 60 INS: F AMB: 50 C DUTY: CONT ENCLOSURE: ODP THERMALLY PROTECTED	<p>HIGH VOLTAGE SHOWN. ROTATE DIAL CCW TO 115 FOR LOW VOLTAGE. USE COPPER CONDUCTORS ONLY. INSTALL MOTOR WITH VENTS DOWN. ACCEPTABLE FOR FIELD WIRING</p>	

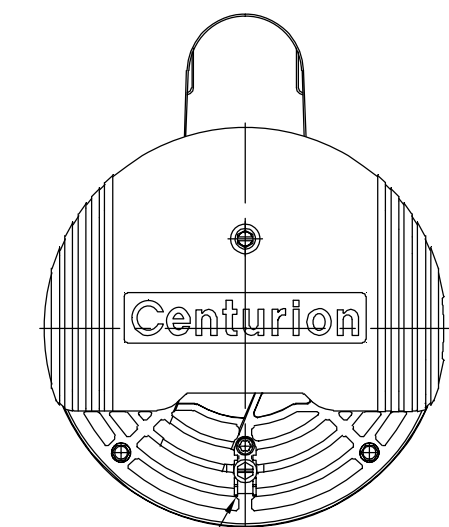
PERFORMANCE CURVE	APPROVED SAMPLE		
16387811	B2858		
UL COMPONENT	CSA		
FILE#	CCN#	FILE#	GUIDE#
PENDING	PENDING	PENDING	PENDING
CUSTOMER	DISTRIBUTION		

CARACTERISTICAS DE GEOMETRIA Y SIMBOLOS Z PLANICIDAD - RECTITUD ANGULARIDAD PERPENDICULARIDAD (A ESQUADRA) // PARALELISMO O REDONDEZ (CIRCULARIDAD) R CILINDRICIDAD PERFIL DE CUALQUIER SUPERFICIE PERFIL DE CUALQUIER LINEA VARIACION POSICION REAL CONCENTRICIDAD SIMETRIA	A MENOS QUE SE ESPECIFIQUE DE OTRA MANERA, LAS TOLERANCIAS DE LAS DIMS; SON LAS SIGUIENTES: PULG ±.1 ±.02 ±.005 ±.0005 mm ±0.5 ±0.13 ±0.013 ANG. ±.50 GRADOS ELIMINAR REBABAS Y ORILLAS FILOSAS DEL BORDE. PULG .003-.015 mm 0.1-0.4 FILETEAR ESQUINA: PULG .020 mm 0.5 MAQUINAR SUPERFICIES PULG 125 mm 3.2 DIMS METRICAS MOSTRADAS [PARENTESIS]
---	--

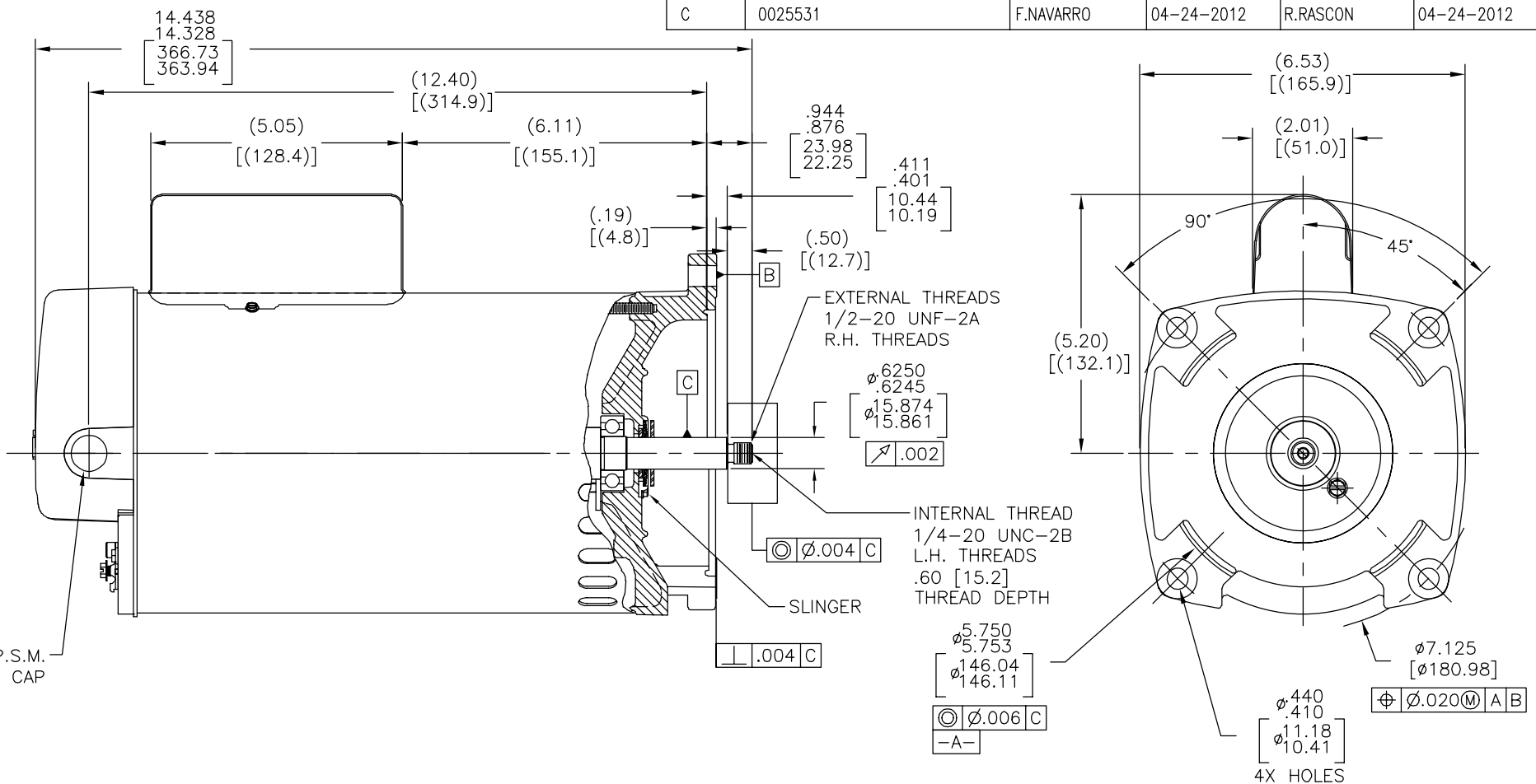
DIBUJADO POR: J.LHESS	06-11-2009
APROBADO POR: D.FOX	06-11-2009
TERCER ANGULO DE PROYECCION	FECHA EDS: 11-11-2011 REV. FORMATO: G
CONFIDENCIAL: ESTE DIBUJO Y SU INFORMACION SON PROPIEDAD DE USO EXCLUSIVO Y CONFIDENCIAL DE REGAL-BELOIT CORPORATION. Y NO DEBERAN SER REVELADOS, DUPLICADOS, DISTRIBUIDOS O USARSE DE OTRA MANERA SIN EL CONSENTIMIENTO ESCRITO DE REGAL-BELOIT CORPORATION. -TODOS LOS DERECHOS RESERVADOS.	

DESCRIPCION: OUTLINE	
TAMAÑO: C	NUMERO DE DIBUJO: B2859
ESCALA: NONE	HOJA: 1

版本	ECO	编制	日期	批准	日期
C	0025531	F.NAVARRO	04-24-2012	R.RASCON	04-24-2012



BONDING LUG
1/2-14 N.P.S.M. WITH CAP



NAMEPLATE DATA	EXTERNAL CONNECTION DIAGRAM	NOTES
MODEL: F56AA41A01 CUST PN: B2859 HP: 2.00 SF: 1.10 ROT: CCWPE RPM: 3450 TYPE: CX CODE: G FORM: FRAME: Y 56 Y VOLTS: 230/115 AMPS: - MAX AMPS: SF AMPS: 10.5/21.0 PH: 1 HZ: 60 INS: F AMB: 50 C DUTY: CONT ENCLOSURE: ODP THERMALLY PROTECTED	<p>HIGH VOLTAGE SHOWN. ROTATE DIAL CCW TO 115 FOR LOW VOLTAGE. USE COPPER CONDUCTORS ONLY. INSTALL MOTOR WITH VENTS DOWN. ACCEPTABLE FOR FIELD WIRING.</p>	

<table border="1"> <tr> <th>PERFORMANCE CURVE</th> <th>APPROVED SAMPLE</th> </tr> <tr> <td>16387811</td> <td>B2858</td> </tr> </table>	PERFORMANCE CURVE	APPROVED SAMPLE	16387811	B2858	<table border="1"> <tr> <th>UL COMPONENT</th> <th>CSA</th> </tr> <tr> <td>PENDING</td> <td>PENDING</td> </tr> </table>	UL COMPONENT	CSA	PENDING	PENDING	<table border="1"> <tr> <th>FILE#</th> <th>CCN#</th> <th>FILE#</th> <th>GUIDE#</th> </tr> <tr> <td>PENDING</td> <td>PENDING</td> <td>PENDING</td> <td>PENDING</td> </tr> </table>	FILE#	CCN#	FILE#	GUIDE#	PENDING	PENDING	PENDING	PENDING	形位公差 平面度 直线度 倾斜度 垂直度 平行度 圆度 圆柱度 面轮廓度 线轮廓度 圆跳动 位置度 同轴度 对称度	除另有注明 尺寸公差如下: 英寸 X XX XXX XXXX 毫米 ±.1 ±.02 ±.005 ±.0005 毫米 ±0.5 ±0.13 ±0.013 角度 ±.50 度 清理毛刺和尖棱 英寸 .003-.015 毫米 0.1-0.4 内圆角 英寸 .020 毫米 0.5 表面粗糙度 英制 125 米制 3.2 米制尺寸显示在[]	绘图: JLHESS 06-11-2009 批准: D.FOX 06-11-2009 第三角投影 图格式发布日期 11-11-2011 图格式版本 G 机密: 本图纸及相关信息所有权归REGAL-BELOIT CORPORATION. 未经REGAL-BELOIT CORPORATION书面授权, 不得泄露、复制、传播或作其他用途。--版权所有	
PERFORMANCE CURVE	APPROVED SAMPLE																					
16387811	B2858																					
UL COMPONENT	CSA																					
PENDING	PENDING																					
FILE#	CCN#	FILE#	GUIDE#																			
PENDING	PENDING	PENDING	PENDING																			
CUSTOMER DISTRIBUTION				ASME Y14.5M 1994	名称 OUTLINE 图幅 C 图号 B2859 比例 NONE 页号 1																	