

REV	ECO	REV BY	DATE	APPD	DATE
C	0025531	F.NAVARRO	04-24-2012	R.RASCON	04-24-2012

D

C

B

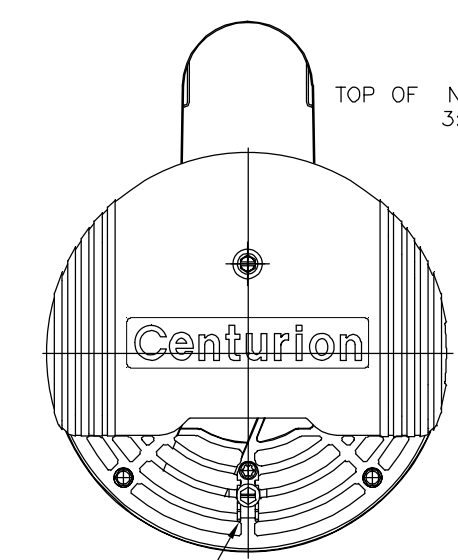
A

D

C

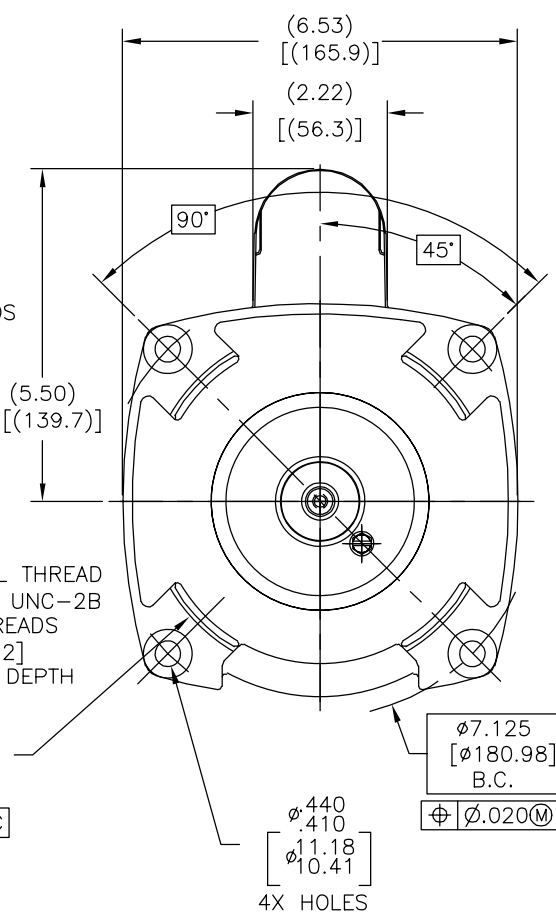
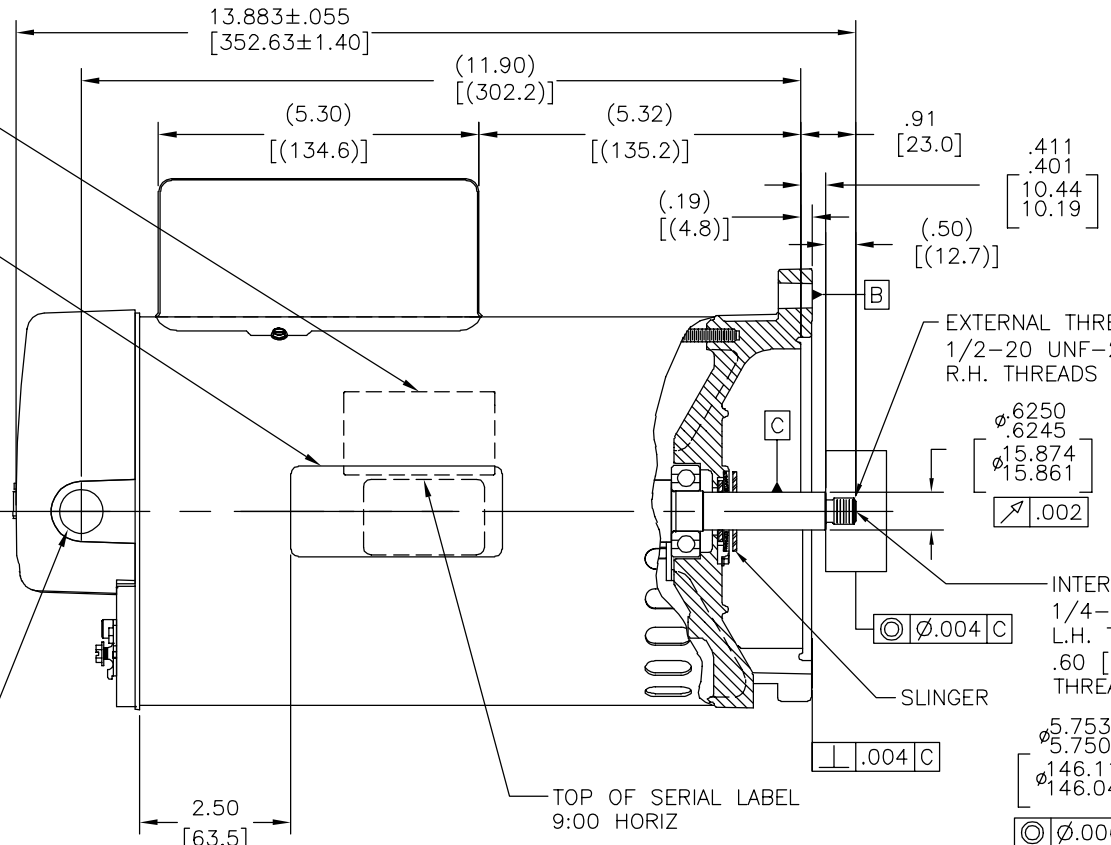
B

A



TOP OF NON SEVS ABOVE THE SERIAL LABEL

TOP OF NAMEPLATE 3:00 HORIZ



BONDING LUG

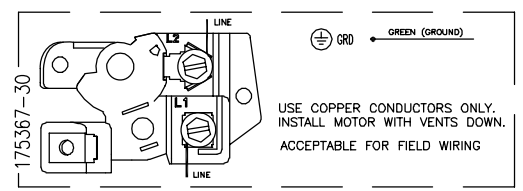
1/2-14 N.P.S.M. WITH CAP

NAMEPLATE DATA

EXTERNAL CONNECTION DIAGRAM

NOTES

MODEL: 196256
 CUST PN: B2842
 HP: 1.5 SF: 1.47
 ROT: CCWPE
 RPM: 3450
 TYPE: CX CODE: H
 FORM: FRAME: Y 56 Y
 VOLTS: 208-230
 AMPS:
 MAX AMPS:
 SF AMPS: 9.6-8.8
 PH: 1 HZ: 60
 INS: F AMB: 50°C
 DUTY: CONT
 ENCLOSURE: ODP
 THERMALLY PROTECTED



1. FOR THREADED SHAFT EXT. ECCENTRICITY OF THREADED PORTION OF SHAFT IS HELD WITHIN .004[.10] TOTAL GAGE READING WITH THE INDICATOR ON O.D. OF GROUND RING GAGE AS SHOWN. THE GAGE BEING STATIONARY WITH RESPECT TO THE ROTOR.
2. END PLAY NOT TO EXCEED .010[.25] MEASURED WITH NO THRUST.
3. ALL DIMENSIONS SHOWN IN PARENTHESIS ARE REFERENCE DIMENSIONS.
4. FINISH PAINT TO BE BLACK.
5. REFERENCE MODEL: B842.

PERFORMANCE CURVE

APPROVED SAMPLE

GEOMETRIC CHARACTERISTICS & SYMBOLS

- FLATNESS
- STRAIGHTNESS
- ANGULARITY
- PERPENDICULARITY (SQUARENESS)
- PARALLELISM
- ROUNDNESS (CIRCULARITY)
- CYLINDRICITY
- PROFILE OF ANY SURFACE
- PROFILE OF ANY LINE
- RUNOUT
- TRUE POSITION
- CONCENTRICITY
- SYMMETRY

ASME Y14.5M 1994

UNLESS OTHERWISE SPECIFIED DIM. TOLERANCES ARE AS FOLLOWS:

INCH	±.1	±.02	±.005	±.0005
mm	±0.5	±0.13	±0.013	

ANG. ±.50 DEG
 REMOVE BURRS & BREAK SHARP EDGES:
 INCH .003-.015 mm 0.1-0.4
 CORNER FILLETS TO:
 INCH .020 mm 0.5
 MACHINE SURFACES:
 INCH 125 mm 3.2
 METRIC DIMS. SHOWN IN [BRACKETS]

DR BY: JZ 09-21-2010

APPD: HZ 09-21-2010

THIRD ANGLE PROJECTION

EDS DATE 11-11-2011
 FORMAT REV G

CONFIDENTIAL: THIS DRAWING AND ITS INFORMATION ARE THE EXCLUSIVE AND CONFIDENTIAL PROPERTY OF REGAL-BELOIT CORPORATION AND ARE NOT TO BE DISCLOSED, DUPLICATED, DISTRIBUTED OR OTHERWISE USED WITHOUT THE WRITTEN CONSENT OF REGAL-BELOIT CORPORATION. -ALL RIGHTS RESERVED.



DESCRIPTION

OUTLINE

SIZE C DWG NO B2842

SCALE NONE SHEET 1

4

3

2

1

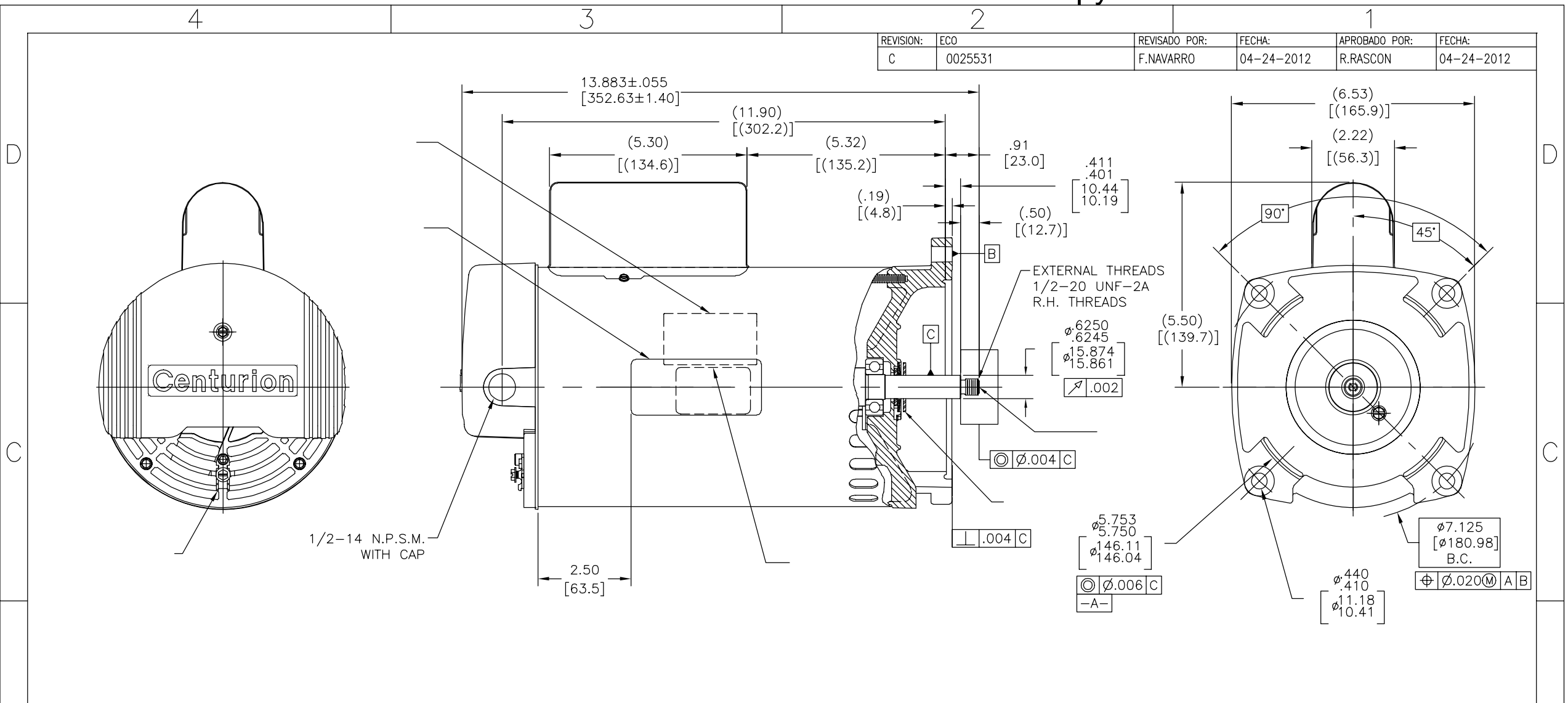
4

3

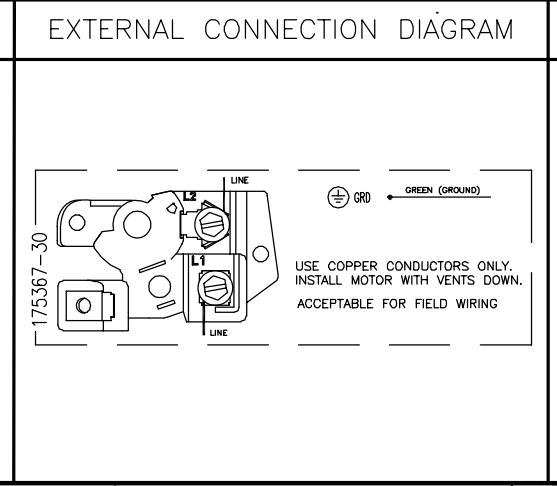
2

1

REVISION:	ECO	REVISADO POR:	F.NAVARRO	FECHA:	04-24-2012	APROBADO POR:	R.RASCON	FECHA:	04-24-2012
C	0025531								



NAMEPLATE DATA	
MODEL: 196256	CUST PN: B2842
HP: 1.5	SF: 1.47
ROT: CCWPE	
RPM: 3450	
TYPE: CX	CODE: H
FORM:	FRAME: Y 56 Y
VOLTS: 208-230	
AMPS:	
MAX AMPS:	
SF AMPS: 9.6-8.8	
PH: 1	HZ: 60
INS: F	AMB: 50°C
DUTY: CONT	
ENCLOSURE: ODP	
THERMALLY PROTECTED	



NOTES

PERFORMANCE CURVE	APPROVED SAMPLE		
17108511	0601043		
UL COMPONENT	CSA		
FILE#	CCN#	FILE#	GUIDE#
PENDING	PENDING	PENDING	PENDING
CUSTOMER	DISTRIBUTION		

CARACTERISTICAS DE GEOMETRIA Y SIMBOLOS

- PLANICIDAD
- RECTITUD
- ANGULARIDAD
- PERPENDICULARIDAD (A ESCUADRA)
- PARALELISMO
- REDONDEZ (CIRCULARIDAD)
- CILINDRICIDAD
- PERFIL DE CUALQUIER SUPERFICIE
- PERFIL DE CUALQUIER LINEA
- VARIACION
- POSICION REAL
- CONCENTRICIDAD
- SIMETRIA

A MENOS QUE SE ESPECIFIQUE DE OTRA MANERA, LAS TOLERANCIAS DE LAS DIMS; SON LAS SIGUIENTES:

PULG ±.1 ±.02 ±.005 ±.0005
 mm ±0.5 ±0.13 ±0.013

ANG. ±.50 GRADOS
 ELIMINAR REBABAS Y ORILLAS FILASAS DEL BORDE.

PULG .003-.015 mm 0.1-0.4
 FILETEAR ESQUINA: PULG .020 mm 0.5
 MAQUINAR SUPERFICIES
 PULG 125 mm 3.2

DIBUJADO POR: JZ 09-21-2010
 APROBADO POR: HZ 09-21-2010
 TERCER ANGULO DE PROYECCION

FECHA EDS: 11-11-2011
 REV. FORMATO: G

CONFIDENCIAL: ESTE DIBUJO Y SU INFORMACION SON PROPIEDAD DE USO EXCLUSIVO Y CONFIDENCIAL DE REGAL-BELOIT CORPORATION. Y NO DEBERAN SER REVELADOS, DUPLICADOS, DISTRIBUIDOS O USARSE DE OTRA MANERA SIN EL CONSENTIMIENTO ESCRITO DE REGAL-BELOIT CORPORATION. -TODOS LOS DERECHOS RESERVADOS.

REGAL-BELOIT CORPORATION

DESCRIPCION: OUTLINE

TAMAÑO: C NUMERO DE DIBUJO: B2842

ESCALA: NONE HOJA: 1

版本	ECO	编制	日期	批准	日期
C	0025531	F.NAVARRO	04-24-2012	R.RASCON	04-24-2012

D

C

B

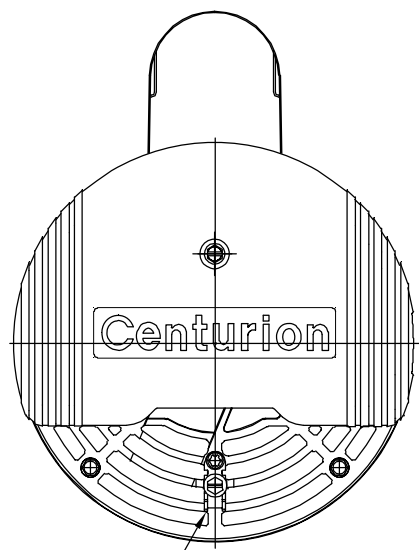
A

D

C

B

A



警告标贴顶部
序列标贴上面

铭牌顶部,
3:00水平位置

接线片

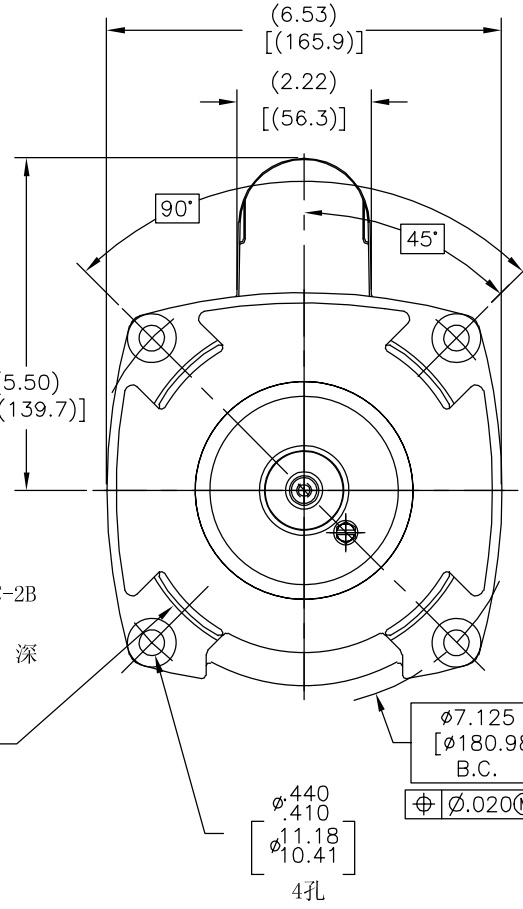
1/2-14 N.P.S.M.
WITH CAP

序列标贴顶部
9:00位置

外螺纹
1/2-20 UNF-2A
右旋

内螺纹
1/4-20 UNC-2B
左旋
.60 [15.2] 深

甩水圈



NAMEPLATE DATA	EXTERNAL CONNECTION DIAGRAM	NOTES
MODEL: 196256 CUST PN: B2842 HP: 1.5 SF: 1.47 ROT: CCWPE RPM: 3450 TYPE: CX CODE: H FORM: FRAME: Y 56 Y VOLTS: 208-230 AMPS: MAX AMPS: SF AMPS: 9.6-8.8 PH: 1 HZ: 60 INS: F AMB: 50°C DUTY: CONT ENCLOSURE: ODP THERMALLY PROTECTED	<p>175367-30</p> <p>USE COPPER CONDUCTORS ONLY. INSTALL MOTOR WITH VENTS DOWN. ACCEPTABLE FOR FIELD WIRING</p>	1. 量规测量方法如图所示，螺纹外径与中心的同心度为.004[.10] 2. 轴向窜动不超过.010[.25] 3. 括号内尺寸为参考尺寸。 4. 表面为黑色喷漆。 5. 参考型号: B842。

PERFORMANCE CURVE	APPROVED SAMPLE	形位公差 □ 平面度 — 直线度 / 倾斜度 ⊥ 垂直度 // 平行度 ○ 圆度 ⊙ 圆柱度 面轮廓度 线轮廓度 圆跳动 ⊕ 位置度 ⊙ 同轴度 ≡ 对称度	除另有注明 尺寸公差如下: 英寸 X XX XXX XXXX 毫米 ±.1 ±.02 ±.005 ±.0005 毫米 ±0.5 ±0.13 ±0.013 角度 ±.50 度 清理毛刺和尖棱 英寸 .003-.015 毫米 0.1-0.4 内圆角 英寸 .020 毫米 0.5 表面粗糙度 英制 125 米制 3.2	绘图: JZ 09-21-2010	<p>名称: OUTLINE</p> <p>图幅: C 图号: B2842</p> <p>比例: NONE 页号: 1</p>
UL COMPONENT	CSA		第三角投影 图纸格式发布日期 11-11-2011 图纸格式版本 G		
FILE# CCN# FILE# GUIDE#	PENDING PENDING PENDING PENDING		机密: 本图纸及相关信息所有权归REGAL-BELOIT CORPORATION。 未经REGAL-BELOIT CORPORATION书面授权, 不得泄露、 复制、传播或作其他用途。--版权所有		
CUSTOMER	DISTRIBUTION		ASME Y14.5M 1994 米制尺寸显示在 []		

4

3

2

1