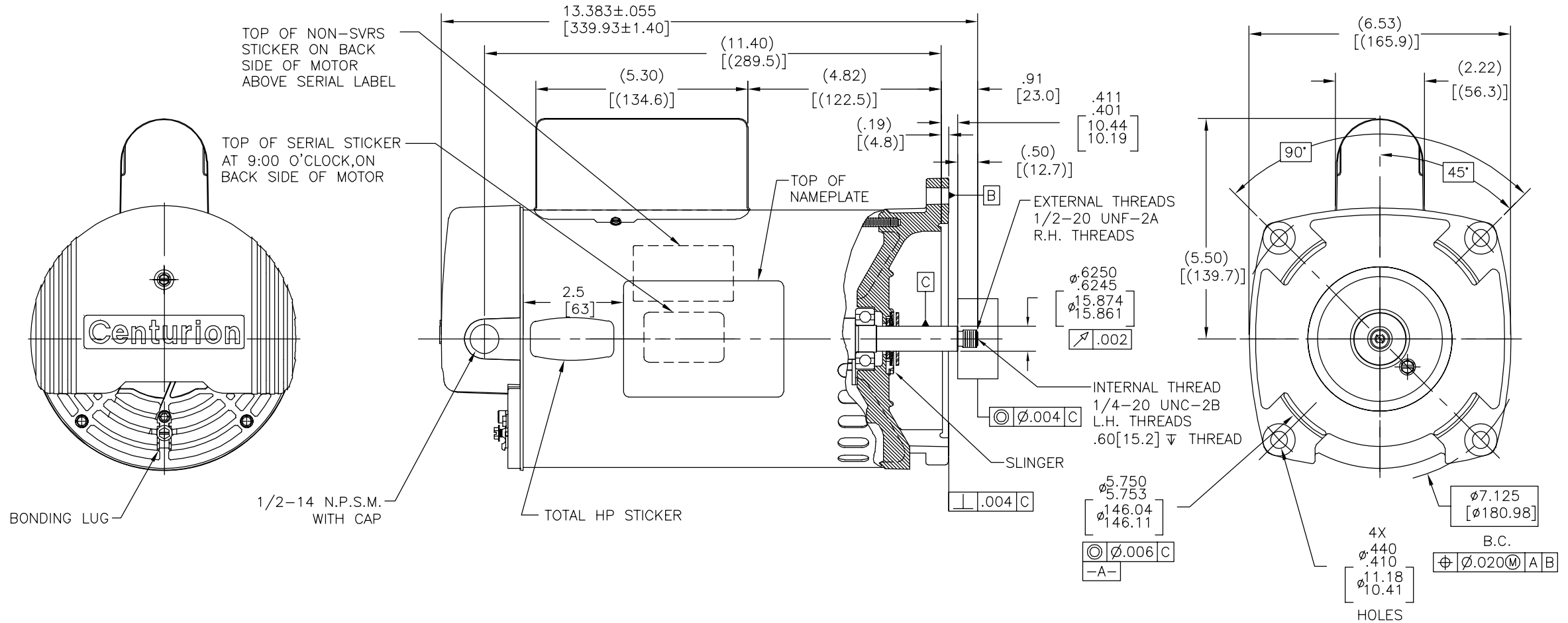


REV	ECO	REV BY	DATE	APPD	DATE
H	0025531	F.NAVARRO	04-24-2012	R.RASCON	04-24-2012



NAMEPLATE DATA	EXTERNAL CONNECTION DIAGRAM	NOTES
MODEL: 196255 CUST PN: B2841 HP: 1.0 SF: 1.65 ROT: CCWPE RPM: 3450 TYPE: CX CODE: J FORM: FRAME: Y 56 Y VOLTS: 208-230/115 AMPS: 7.8-7.4/14.8 MAX AMPS: SF AMPS: - PH: 1 HZ: 60 INS: F AMB: 50°C DUTY: CONT ENCLOSURE: ODP THERMALLY PROTECTED		NOTES: 1. FOR THREADED SHAFT EXT. ECCENTRICITY OF THREADED PORTION OF SHAFT IS HELD WITHIN .004[.10] TOTAL GAGE READING WITH THE INDICATOR ON O.D. OF GROUND RING GAGE AS SHOWN. THE GAGE BEING STATIONARY WITH RESPECT TO THE ROTOR. 2. END PLAY NOT TO EXCEED .010[.25] MEASURED WITH NO THRUST. 3. ALL DIMENSIONS SHOWN IN PARENTHESIS ARE REFERENCE DIMENSIONS. 4. FINISH PAINT TO BE BLACK. 5. REFERENCE MODEL: B661

PERFORMANCE CURVE	APPROVED SAMPLE	GEOMETRIC CHARACTERISTICS & SYMBOLS	UNLESS OTHERWISE SPECIFIED DIM. TOLERANCES ARE AS FOLLOWS:	DR BY: AL	11-15-2010	
16380611		□ FLATNESS ⊥ STRAIGHTNESS ∠ ANGULARITY ⊥ PERPENDICULARITY (SQUARENESS) // PARALLELISM ○ ROUNDNESS (CIRCULARITY) ∅ CYLINDRICITY △ PROFILE OF ANY SURFACE ∩ PROFILE OF ANY LINE ↗ RUNOUT ⊕ TRUE POSITION ⊙ CONCENTRICITY = SYMMETRY	INCH ±.1 ±.02 .XXX .XXXX mm ±0.5 ±0.13 ±0.013 ANG. ±.50 DEG REMOVE BURRS & BREAK SHARP EDGES: INCH .003-.015 mm 0.1-0.4 CORNER FILLETS TO: INCH .020 mm 0.5 MACHINE SURFACES: INCH √ mm 3.2 METRIC DIMS. SHOWN IN [BRACKETS]	APPD: TZ	11-15-2010	
UL COMPONENT	CSA			THIRD ANGLE PROJECTION	EDS DATE 11-11-2011	OUTLINE
FILE#	CCN#	FILE#	GUIDE#		FORMAT REV G	SIZE C DWG NO B2841
PENDING	PENDING	PENDING	PENDING			SCALE NONE SHEET 1
CUSTOMER	DISTRIBUTION					

版本	ECO	编制	日期	批准	日期
H	0025531	F.NAVARRO	04-24-2012	R.RASCON	04-24-2012

D

C

B

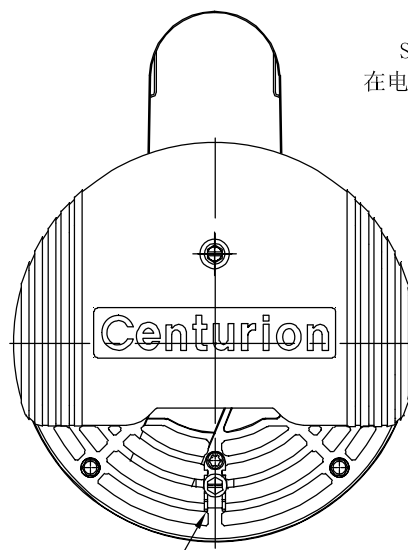
A

D

C

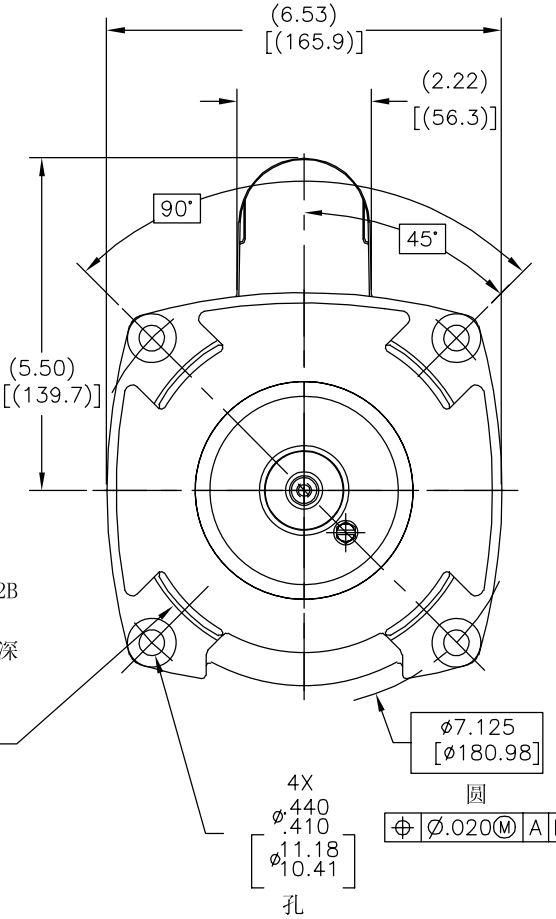
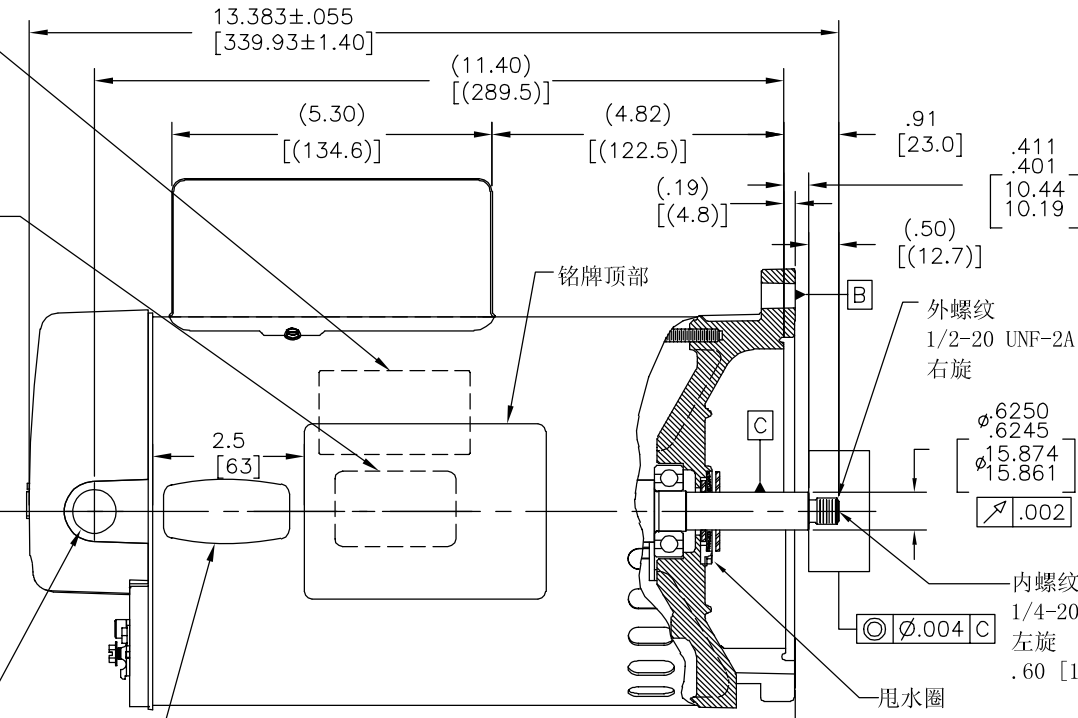
B

A



NON SVRS标贴
顶部在电机背面
标贴的上方

SERIAL标贴顶部
在电机背面9点位置



接线片

1/2-14 N. P. S. M.
带塞子

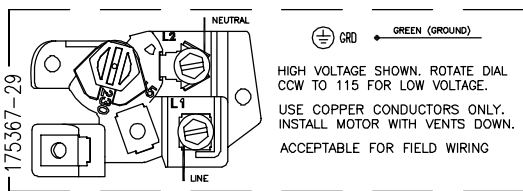
马力标贴

NAMEPLATE DATA

EXTERNAL CONNECTION DIAGRAM

NOTES

MODEL: 196255
CUST PN: B2841
HP: 1.0 SF: 1.65
ROT: CCWPE
RPM: 3450
TYPE: CX CODE: J
FORM: FRAME: Y 56 Y
VOLTS: 208-230/115
AMPS: 7.8-7.4/14.8
MAX AMPS:
SF AMPS: -
PH: 1 HZ: 60
INS: F AMB: 50°C
DUTY: CONT
ENCLOSURE: ODP
THERMALLY PROTECTED



- 技术要求:
- 量规测量方法如图所示，螺纹外径与中心的同心度为.004[.10]
 - 轴向窜动不超过.010[.25]
 - 括号内尺寸为参考尺寸。
 - 表面最终颜色为黑色。
 - 参考型号: B661

PERFORMANCE CURVE

APPROVED SAMPLE

形位公差	平面度	直线度	倾斜度	垂直度	平行度	圆度	圆柱度	面轮廓度	线轮廓度	圆跳动	位置度	同轴度	对称度
16380611													
UL COMPONENT	CSA												
FILE#	CCN#	FILE#	GUIDE#										
PENDING	PENDING	PENDING	PENDING										
CUSTOMER	DISTRIBUTION												

除另有注明
尺寸公差如下:
英寸 X XX XXX XXXX
毫米 ±.1 ±.02 ±.005 ±.0005
毫米 ±0.5 ±0.13 ±0.013
角度 ±.50 度
清理毛刺和尖棱
英寸 .003-.015 毫米 0.1-0.4
内圆角
英寸 .020 毫米 0.5
表面粗糙度
英制 125 米制 3.2
米制尺寸显示在 []

绘图: AL 11-15-2010
批准: TZ 11-15-2010
第三角投影
图纸格式发布日期 11-11-2011
图纸格式版本 G
机密: 本图纸及相关信息所有权归REGAL-BELOIT CORPORATION。
未经REGAL-BELOIT CORPORATION书面授权，不得泄露、
复制、传播或作其他用途。--版权所有



名称
OUTLINE

图幅 C 图号 B2841
比例 NONE 页号 1

4

3

2

1

ASME Y14.5M 1994