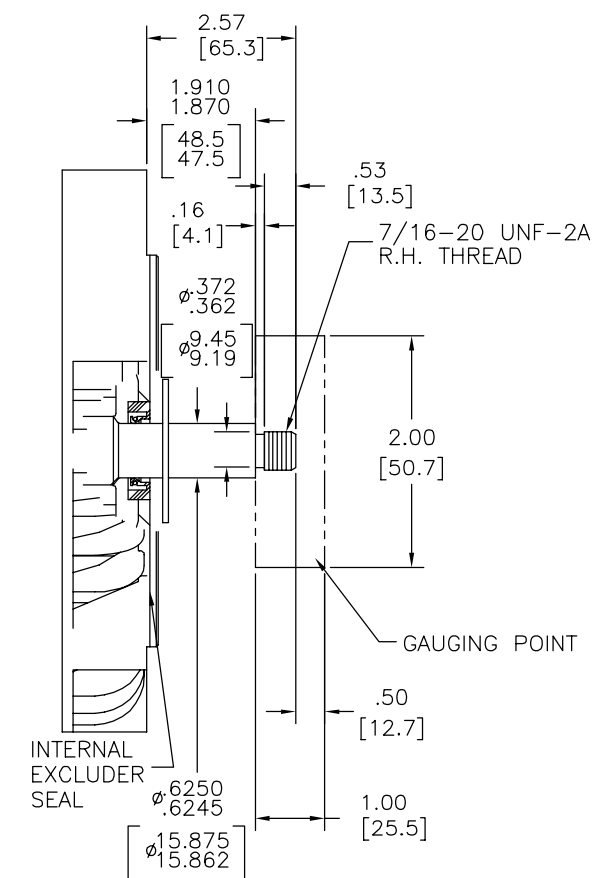
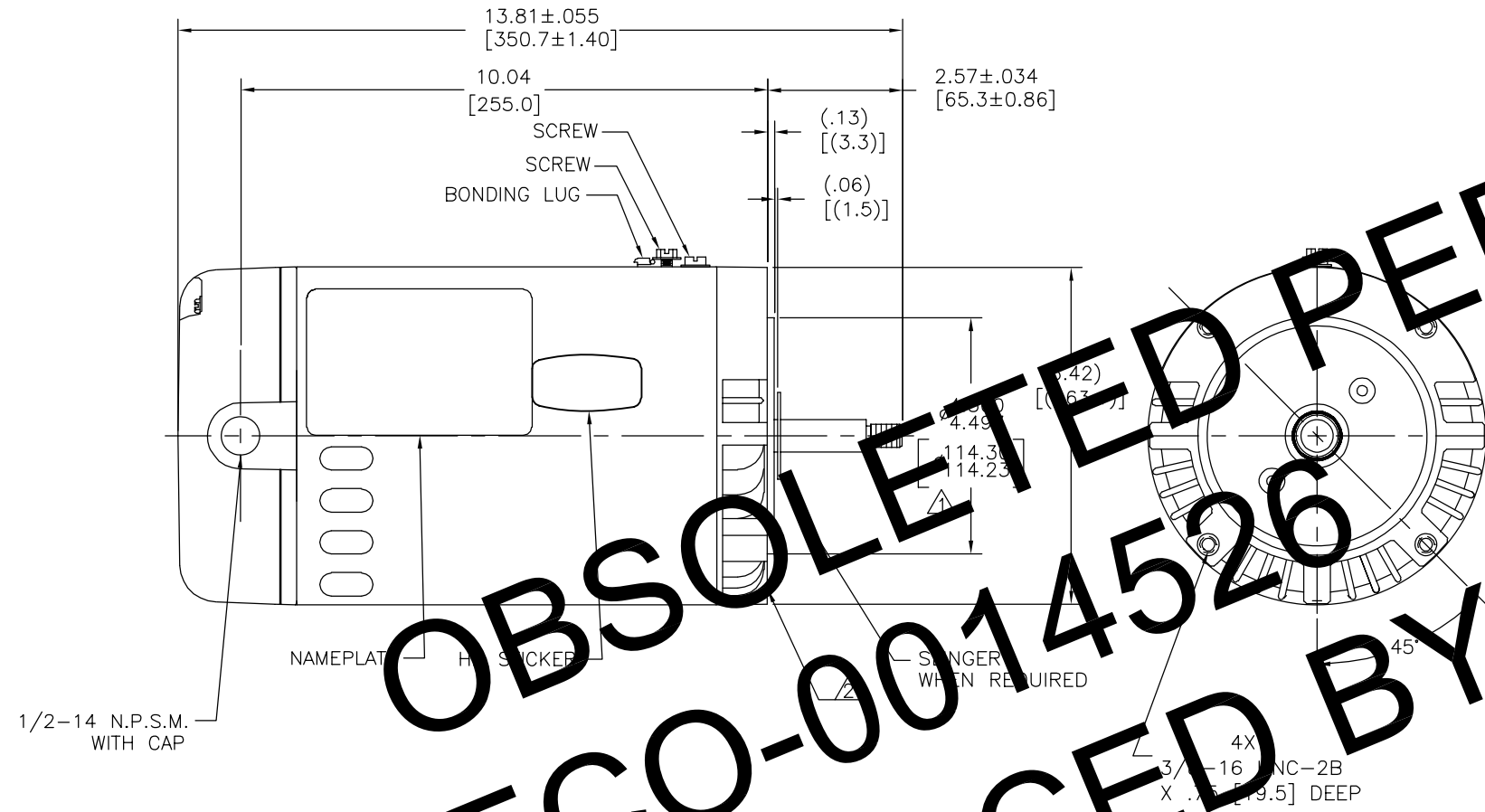


REV	ECO	REV BY	DATE	APPD	DATE
G	0014526	AS	10-15-2010	TZ	10-15-2010



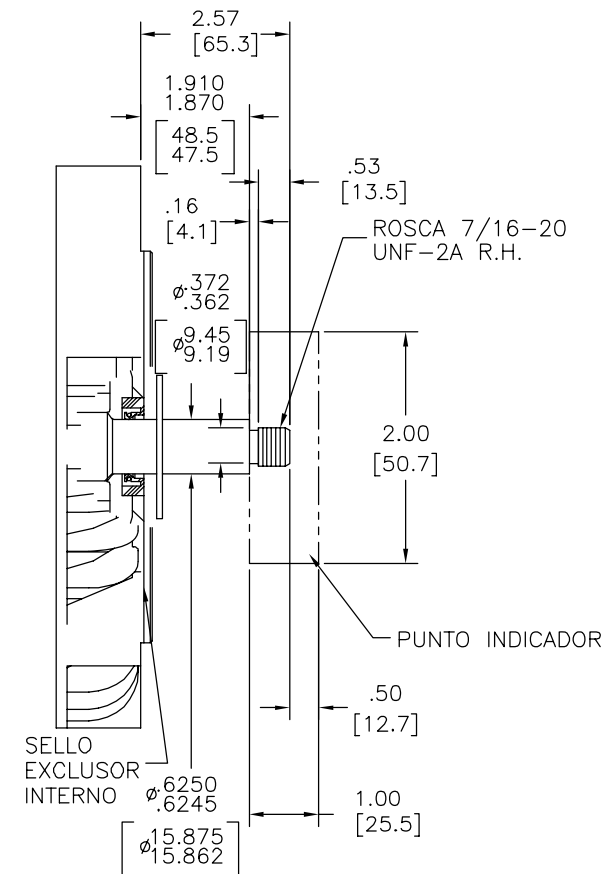
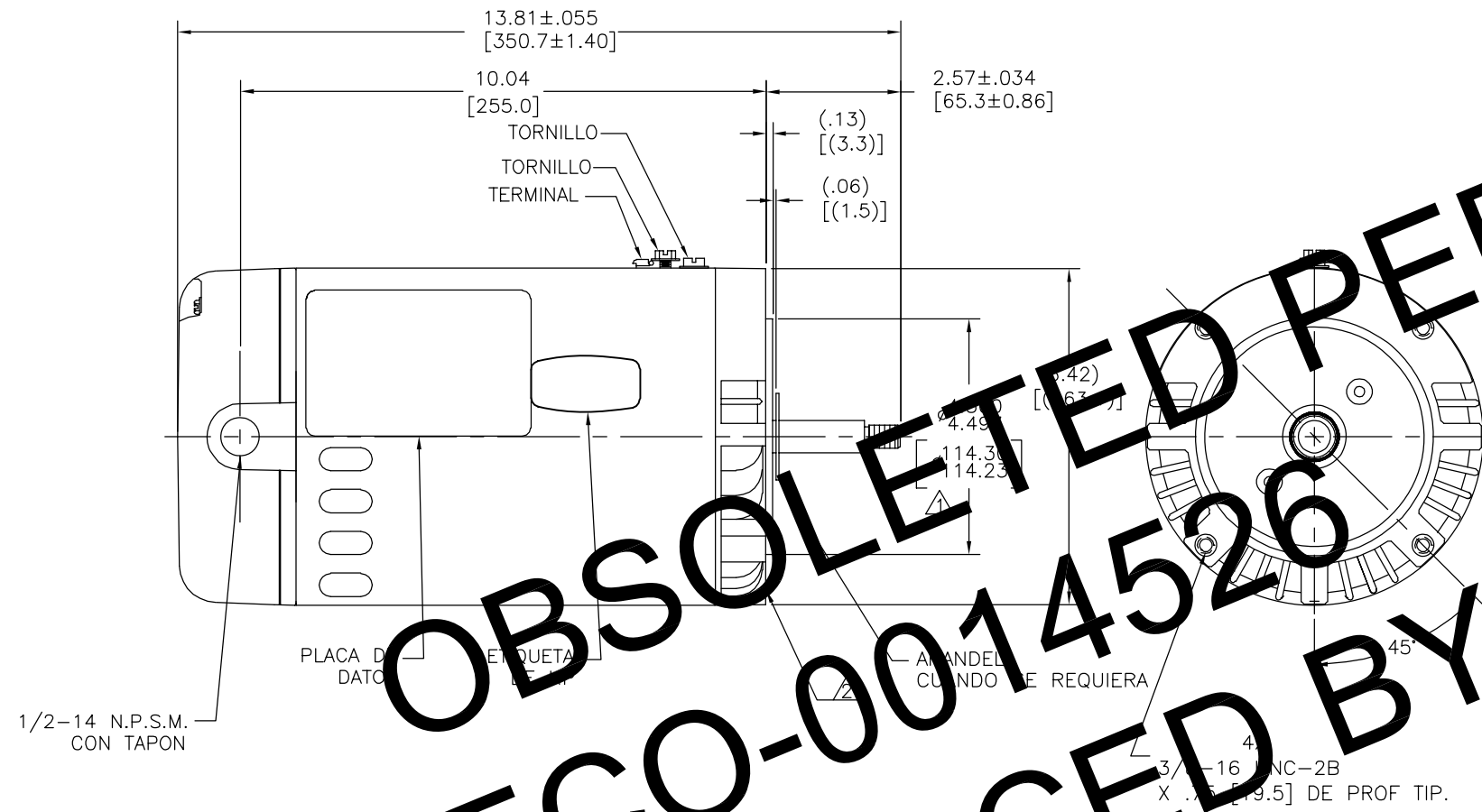
OBSOLETE PER
ECO-0014526
REPLACED BY
B231SE-S01

NAMEPLATE DATA	EXTERNAL CONNECTION DIAGRAM	NOTES
MODEL: 184984 CUST PN: B231SE HP: 2.5 SF: 1.0 ROT: CW RPM: 3450 TYPE: CX FORM: CODE: E FRAME: P 56 J VOLTS: 230 AMPS: 10.5 MAX AMPS: SF AMPS: - PH: 1 HZ: 60 INS: B AMB: 50 DUTY: CONT ENCLOSURE: ODP THERMALLY PROTECTED	<p>230 VOLTAGE - SINGLE SPEED</p>	1. PILET DIAMETER IS CONCENTRIC WITH SHAFT CENTERLINE WITH .004 [.10] T.I.R. 2. FACE OF MOUNTING FLANGE IS PERPENDICULAR TO SHAFT CENTERLINE WITHIN .004 [.10] T.I.R. 3. SHAFT RUNOUT NOT TO EXCEED .002 [.05] T.I.R. 4. FOR THREADED SHAFT EXT. MATING PARTS SHOULD BE RELIEVED ONE PARTS SHOULD BE RELIEVED ONE THREAD TO CLEAR FILLET. 5. FOR THREADED SHAFT EXT. ECCENTRICITY OF THREADED PORTION OF SHAFT IS HELD WITHIN .004 [.10] TOTAL GAGE READING WITH THE INDICATOR ON O.D. OF GROUND RING GAGE AS SHOWN. THE GAGE BEING STATIONARY WITH RESPECT TO THE ROTOR. 6. END PLAY NOT TO EXCEED .010 [.25] MEASURED WITH NO THRUST.

PERFORMANCE CURVE 15593311	APPROVED SAMPLE CSA	GEOMETRIC CHARACTERISTICS & SYMBOLS □ FLATNESS - STRAIGHTNESS ∠ ANGULARITY ⊥ PERPENDICULARITY (SQUARENESS) // PARALLELISM ○ ROUNDNESS (CIRCULARITY) ∅ CYLINDRICITY △ PROFILE OF ANY SURFACE ∩ PROFILE OF ANY LINE ↑ RUNOUT ⊕ TRUE POSITION ⊙ CONCENTRICITY = SYMMETRY	UNLESS OTHERWISE SPECIFIED DIM. TOLERANCES ARE AS FOLLOWS: INCH X XX XXX XXXX mm ±0.5 ±0.13 ±0.013 ANG. ±.50 DEG REMOVE BURRS & BREAK SHARP EDGES: INCH .003-.015 mm 0.1-0.4 CORNER FILLETS TO: INCH .020 mm 0.5 MACHINE SURFACES: INCH 125 mm 3.2 METRIC DIMS. SHOWN IN [BRACKETS]	DR BY: EGARCIA 08-02-2004 APPD: THIRD ANGLE PROJECTION EDS DATE 02-22-2008 FORMAT REV F CONFIDENTIAL: THIS DRAWING AND ITS INFORMATION ARE THE EXCLUSIVE AND CONFIDENTIAL PROPERTY OF A.O. SMITH CORP. AND ARE NOT TO BE DISCLOSED, DUPLICATED, DISTRIBUTED OR OTHERWISE USED WITHOUT THE WRITTEN CONSENT OF A.O. SMITH CORP. -ALL RIGHTS RESERVED. ASME Y14.5M 1994
-------------------------------	------------------------	--------------------------------------------------------------------------------------------------------------------------------------------------------------------------------------------------------------------------------------------------------------------------------------------------------------	-------------------------------------------------------------------------------------------------------------------------------------------------------------------------------------------------------------------------------------------------------------------------------------------------------------------	----------------------------------------------------------------------------------------------------------------------------------------------------------------------------------------------------------------------------------------------------------------------------------------------------------------------------------------------------------------------------------------

ELECTRICAL PRODUCTS COMPANY A DIVISION OF A. O. SMITH CORPORATION	DESCRIPTION OUTLINE
SIZE C DWG NO 02282103-004	SCALE NONE SHEET 1

REVISION:	ECO	REVISADO POR:	FECHA:	APROBADO POR:	FECHA:
G	0014526	AS	10-15-2010	TZ	10-15-2010



OBSOLETE PER
ECO-0014526
REPLACED BY
B231SE-S01

NAMEPLATE DATA	EXTERNAL CONNECTION DIAGRAM	NOTES
MODEL: 184984 CUST PN: B231SE HP: 2.5 SF: 1.0 ROT: CW RPM: 3450 TYPE: CX FORM: CODE: E FRAME: P 56 J VOLTS: 230 AMPS: 10.5 MAX AMPS: SF AMPS: - PH: 1 HZ: 60 INS: B AMB: 50 DUTY: CONT ENCLOSURE: ODP THERMALLY PROTECTED	<p>230 VOLTAGE - SINGLE SPEED</p>	1. DIAMETRO PUNTO DE MONTAJE ES CONCENTRICO CON LA LINEA DE CENTRO DE LA FLECHA DENTRO DE .004 [.10] L.T.I. 2. LA CARRERA DE MONTAJE ES PERPENDICULAR A LA LINEA DE CENTRO DE LA FLECHA DENTRO DE .004 [.10] L.T.I. 3. EL OSCILAMIENTO DE LA FLECHA NO EXCEDERA DE .004 [.05] L.T.I. 4. PARA FLECHAS DE ROSCA EXTERNA LAS PARTES QUE SE ACOPLAN DEBEN SER LIBERADAS UNA ROSCA PARA LIBRAR EL FILO. 5. PARA EXT. DE FLECHA CON ROSCA, LA EXCENTRICIDAD DE LA PORCION ROSCADA DE LA FLECHA ES SOSTENIDA DENTRO DE .004 [.10] TOTAL. EL MEDIDOR CON EL INDICADOR SOBRE EL DIAM. EXT. INDICADOR DEL ANILLO DE TIERRA COMO SE MUESTRA. SIENDO EL MEDIDOR ESTACIONARIO CON RESPECTO AL ROTOR. 6. JUEGO AXIAL NO EXCEDERA DE .010 [.25] MEDIDO SIN EMPUJE.

PERFORMANCE CURVE	APPROVED SAMPLE	CARACTERISTICAS DE GEOMETRIA Y SIMBOLOS	A MENOS QUE SE ESPECIFIQUE DE OTRA MANERA, LAS TOLERANCIAS DE LAS DIMS; SON LAS SIGUIENTES:	DIBUJADO POR: EGARCIA	08-02-2004	ELECTRICAL PRODUCTS COMPANY A DIVISION OF A. O. SMITH CORPORATION
15593311	CSA	□ PLANICIDAD - RECTITUD < ANGULARIDAD ⊥ PERPENDICULARIDAD (A ESCUADRA) // PARALELISMO ○ REDONDEZ (CIRCULARIDAD) ∅ CILINDRICIDAD △ PERFIL DE CUALQUIER SUPERFICIE ∩ PERFIL DE CUALQUIER LINEA / VARIACION ⊕ POSICION REAL ⊙ CONCENTRICIDAD = SIMETRIA	PULG ±.1 ±.02 ±.005 ±.0005 mm ±0.5 ±0.13 ±0.013 ANG. ±.50 GRADOS ELIMINAR REBABAS Y ORILLAS FILOSAS DEL BORDE. PULG .003-.015 mm 0.1-0.4 FILETEAR ESQUINA: PULG .020 mm 0.5 MAQUINAR SUPERFICIES PULG 125 mm 3.2 DIMS METRICAS MOSTRADAS [PARENTESIS]	APROBADO POR:	FECHA EDS: 02-22-2008	
UL COMPONENT	CSA			TERCER ANGULO DE PROYECCION	REV. FORMATO: F	TAMAÑO: C
FILE#	CCN#	FILE#	GUIDE#	CONFIDENCIAL: ESTE DIBUJO Y SU INFORMACION SON PROPIEDAD DE USO EXCLUSIVO Y CONFIDENCIAL DE A.O.SMITH CORP. Y NO DEBERAN SER REVELADOS, DUPLICADOS, DISTRIBUIDOS O USARSE DE OTRA MANERA SIN EL CONSENTIMIENTO ESCRITO DE A.O. SMITH CORP. -TODOS LOS DERECHOS RESERVADOS.ASME Y14.5M 1994		NUMERO DE DIBUJO: 02282103-004
E14663	XEWRZ	LR4642	4211-01	ESCALA: NONE		HOJA: 1
CUSTOMER	DISTRIBUTION					

