

## 9" Square Retrofit to 8" Anti-Entrapment Suction Outlet Cover

### VGB Series

#### Product Specification Sheet

The AquaStar line of suction outlet covers, compliant with the new Virginia Graeme-Baker Pool and Spa Safety Act (ASME/ANSI A112.19.8a-2008)

#### Features

For single or multiple drain use  
(see installation instructions)

##### Single

Floor: 88 GPM at 3.2 fps  
Wall: 70 GPM at 2.6 fps

##### Dual

Floor: 88 GPM at 1.6 fps  
Wall: 70 GPM at 1.3 fps

##### Triple system

Floor: 176 GPM at 2.1 fps  
Wall: 140 GPM at 1.7 fps  
Floor/wall: 123 GPM at 1.5 fps

8.8 square inch opening

#316 stainless steel screws

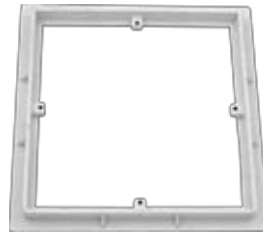
Manufactured from superior  
UV-resistant engineered polymers

Easily and safely retrofits to most brand's  
existing frames\* (see cross-reference chart  
and installation instructions for details and  
special requirements)

All components (cover, adapter plate, frame,  
screws) meet or exceed NSF 50/ASME/ANSI  
A112.19.8a-2008 national standards and  
ASTM G154 UV testing exposure

Listed with IAPMO R&T

20 per case



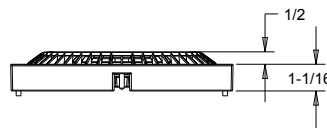
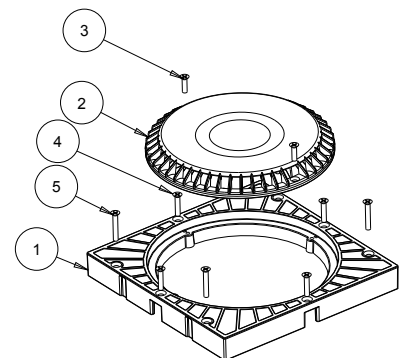
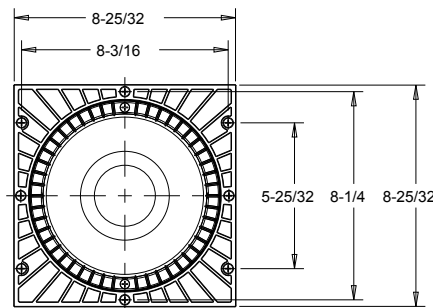
Model # RFS9xxx

\*Fits: Hayward, Waterway, American (Pentair #2), PacFab

#### Part Numbers / Colors

- RFS9101 White
- RFS9102 Black
- RFS9103 Lt. Gray
- RFS9104 Blue
- RFS9105 Dk. Gray
- RFS9106 Bone
- RFS9107 Taupe
- RFS9108 Tan

Frame sold separately  
p/n RFSFR9xxx 20 per case  
**VGB 2008 Compliant**



1. 9" square retrofit to 8" round suction outlet cover
2. 8" anti-entrapment suction outlet
3. #10 x 3/4" flat head phillips screw, ss
4. #10 x 1" flat head phillips screw, ss
5. 10-24 x 1-1/4" flat head phillips screw, ss