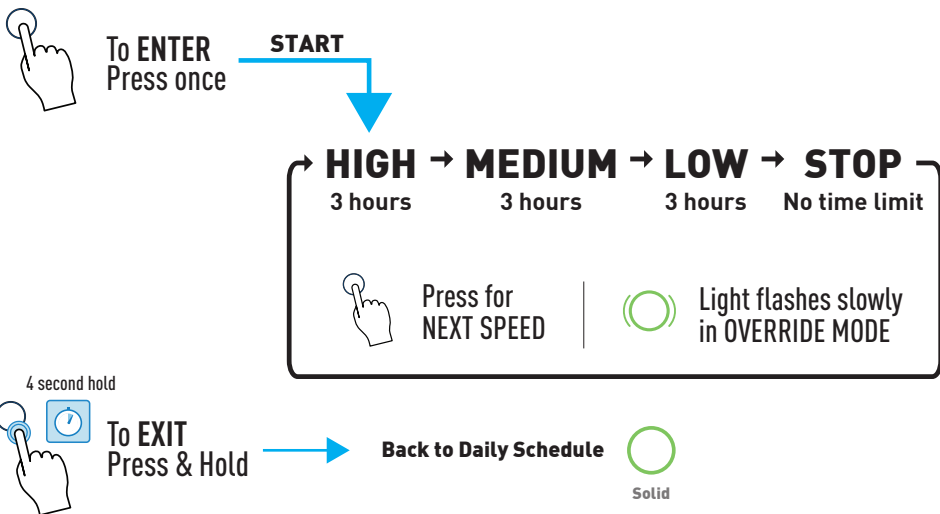


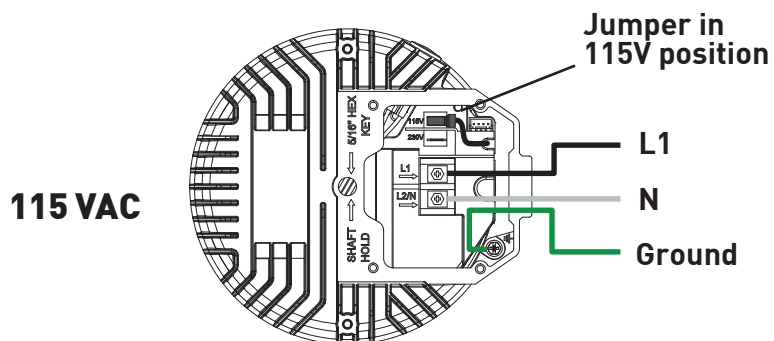
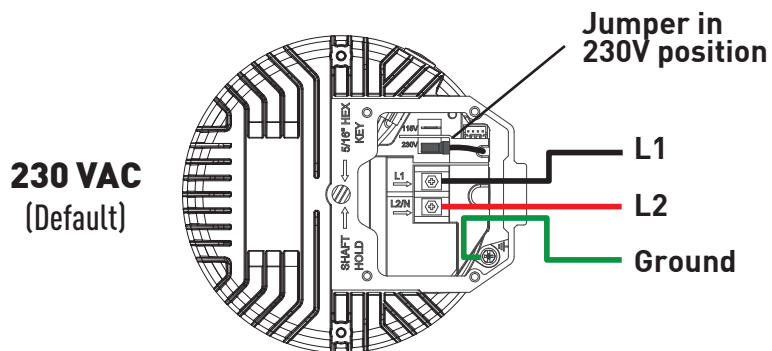


## OVERRIDE MODE



## WIRING INSTRUCTIONS

**Hazardous Voltage:** Always turn off power at the circuit breaker before wiring. The pump can be wired to 230 VAC (factory default) or 115 VAC supply. Move the jumper to the corresponding input voltage as shown.



# XE Pump Series

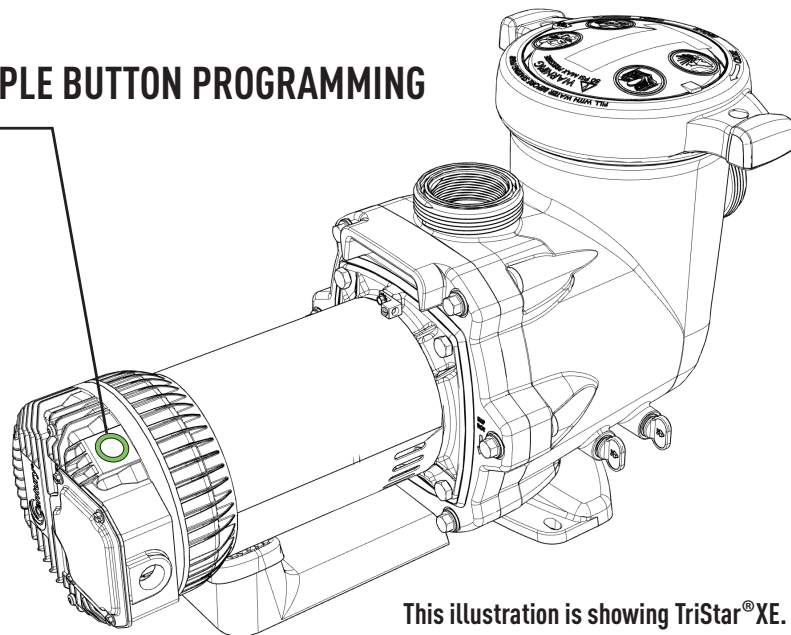
TriStar® XE | MaxFlo® XE | Super Pump® XE

## QUICK START GUIDE



For detailed information about XE Series Pumps, scan this QR code

## SIMPLE BUTTON PROGRAMMING



Energy Efficient



Variable Pump Speed



Programmable

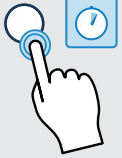
## PUSH BUTTON



### SHORT PRESS

Override mode /  
Choose pump speed

4 second hold



### PRESS & HOLD

Program mode /  
Save & continue

## STATUS LIGHT



### SOLID

Daily Schedule Only



### QUICK FLASHING

Program Mode Only  
Number of flashes indicates  
interval



### SLOW FLASHING

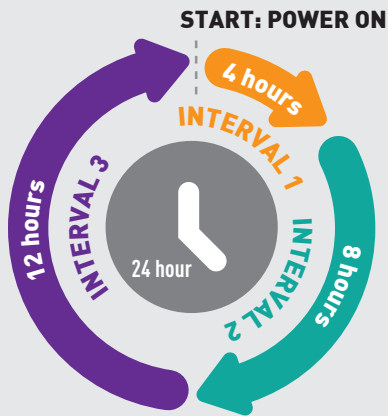
Override Mode Only



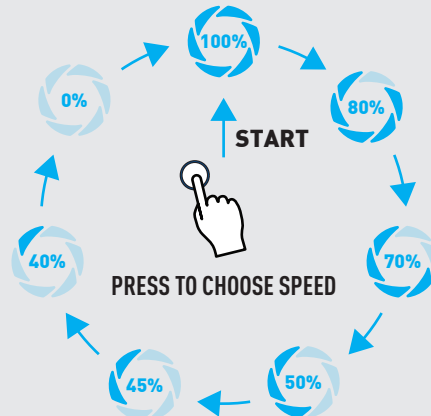
### 3 RAPID FLASHES

Confirms press and hold  
successful

## DAILY SCHEDULE



## CHOOSE PUMP SPEED



## HOW TO PROGRAM THE DAILY SCHEDULE

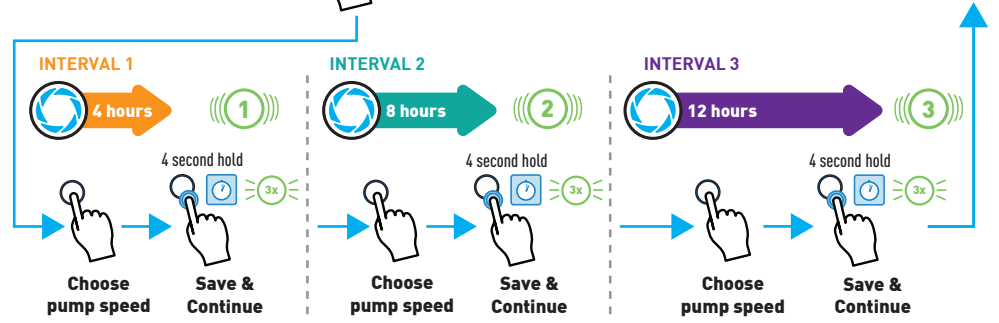
### To ENTER PROGRAM MODE



Back to Daily Schedule

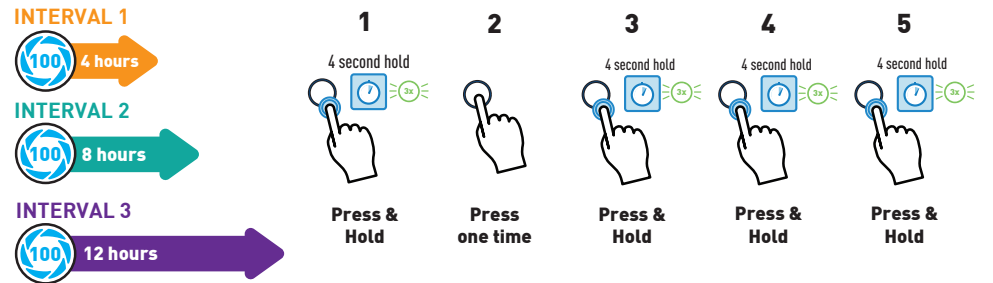


Solid

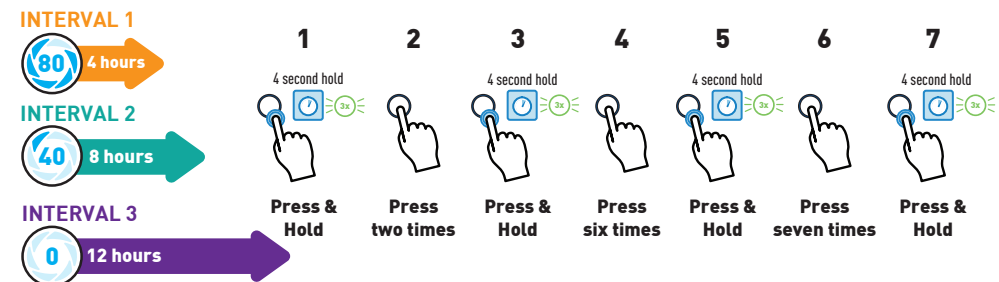


## PROGRAMMING EXAMPLES

### 100% for 24 hours



### 80% for 4 hours / 40% for 8 hours / 0% for 12 hours



## DEFAULT DAILY SCHEDULE 50% pump speed for all 3 intervals



The pump will start at 100% speed for 8 minutes to prime