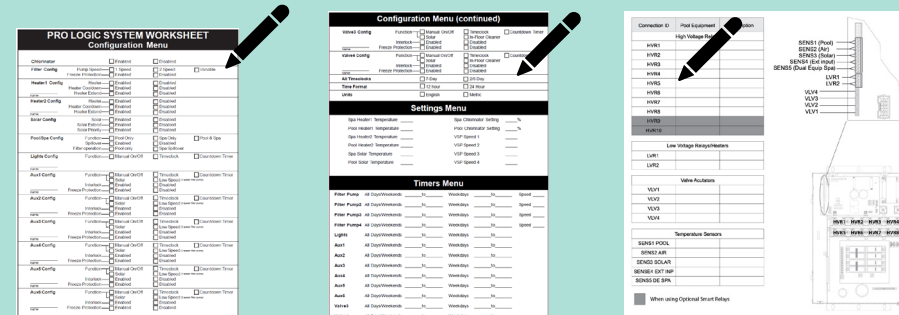


## Pre-Installation Checklist

- Networked ColorLogic lights must be set in "Standalone" mode or they will fail to operate after the upgrade.
- All equipment settings and schedules will be lost after the upgrade.
- This upgrade will convert the old control to the Omni family of products and will require Omni specific accessories. Old remote controls, AQL2-BASE antennas and AQL-CHEM Sense and Dispense will no longer be compatible after the upgrade.
- For systems using a Hayward EcoStar VSP running firmware version less than R3.0.5 (pumps built before 2014), a Hayward SPX3400LCD display must be purchased and installed on the EcoStar pump if variable speed operation is desired with the Omni automation control. If single speed control is desired, no changes are necessary.
- Power is removed to all equipment in the system.
- All safety precautions have been read in the Installation manual.
- All parts listed in the Installation manual are included in the box.
- All of the necessary tools and mounting hardware have been gathered (drill, drill bits, Phillips & flathead screwdrivers, level, wire cutters/strippers, mounting anchors and fasteners).
- The Controller will be mounted a maximum of 15' from the OmniPL and will be mounted a minimum of 6' horizontal distance from the pool or spa.

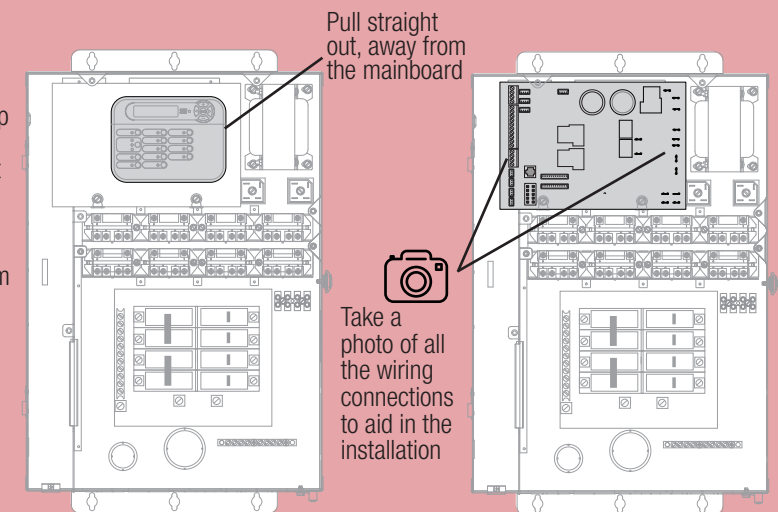
## 1 Record Current Configuration and Wiring

**Set ColorLogic Network lights into standalone mode before proceeding!** All settings will be lost after upgrading. Before starting the installation, record all of the current settings and connections using the worksheets in the Installation manual. If there are accessories being used (ColorLogic lights, AQL-CHEM Sense and Dispense, etc.), you may have additional settings beyond what is covered in the worksheets. A Connection Table is provided to record all connected equipment. All of this information will be used to configure the new OmniPL and return your system to its original function.



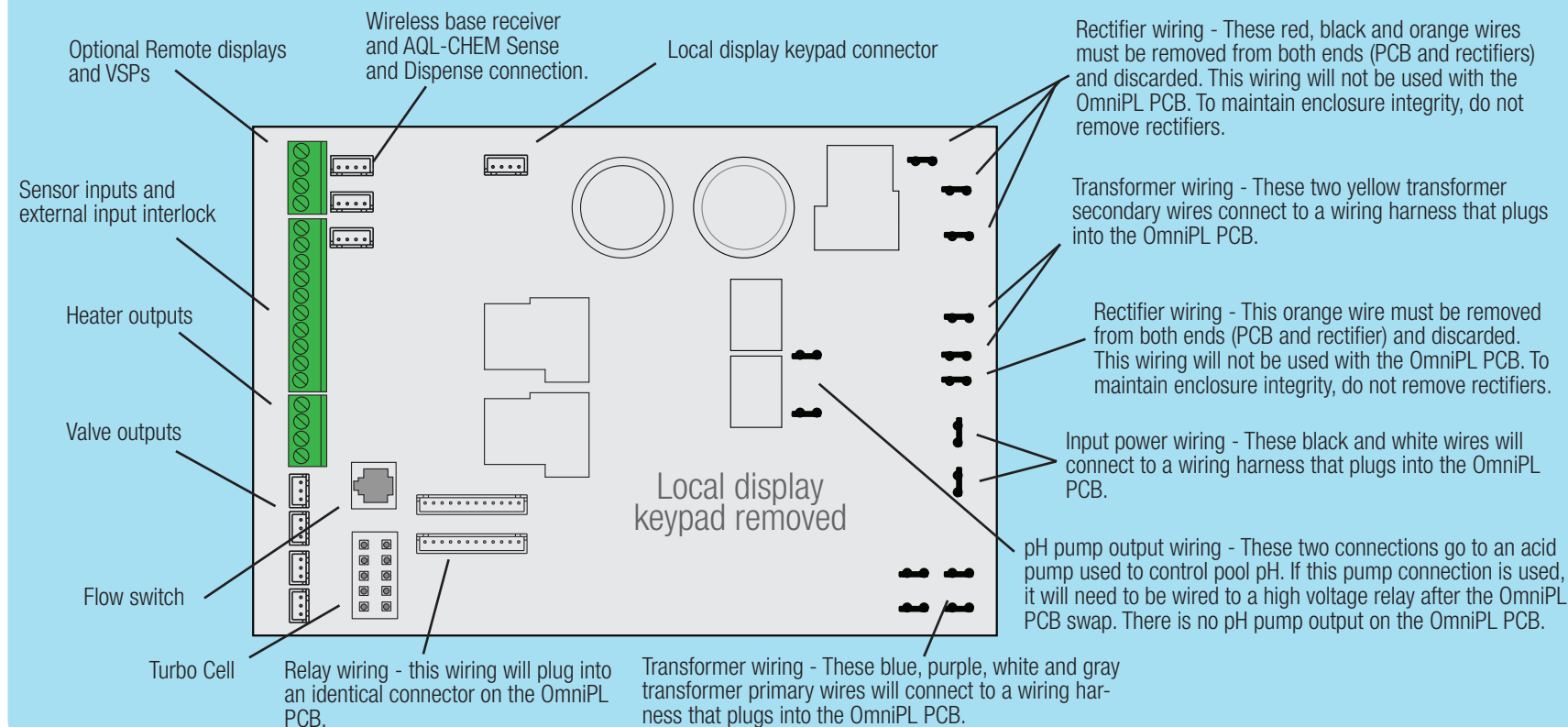
## 2 Access Mainboard

With power disconnected to the control, remove the door by opening, then lifting up and off of the hinges. Remove the keypad by pulling straight out (away from the mainboard) and disconnecting cable. Record the location of all wiring connections by taking a photo or writing them down.



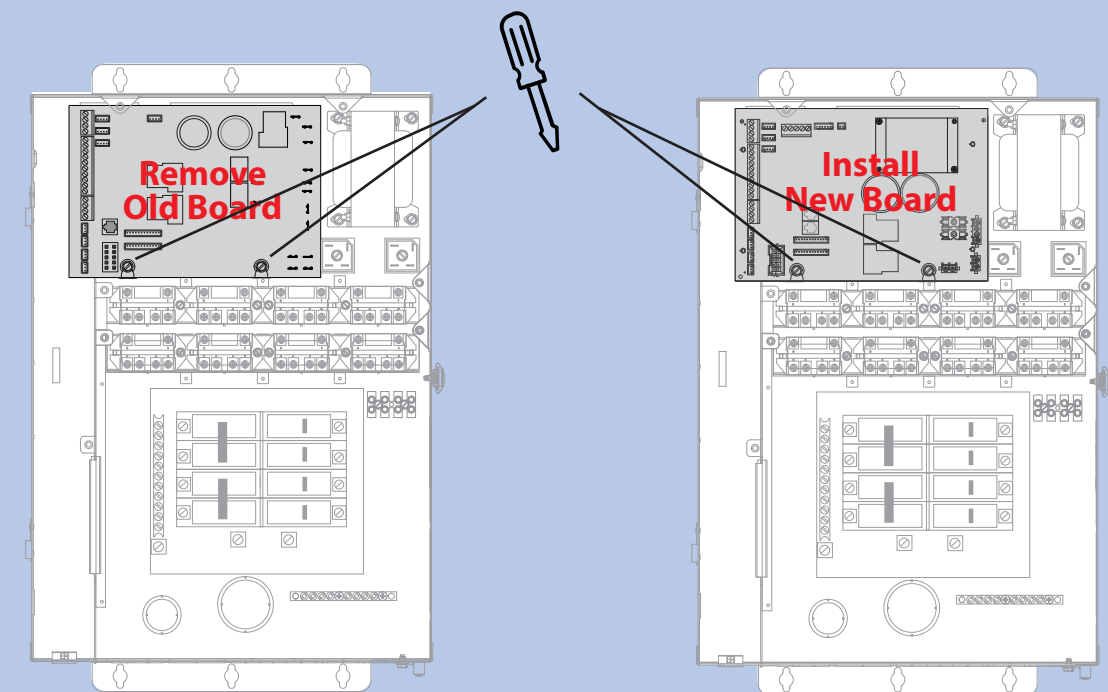
## 3 Remove Wiring from Old Mainboard

After taking a photo, start removing the wiring from the printed circuit board (PCB). The green terminal blocks can be lifted off of the old board without the need to remove individual wires. Except for AquaLogic, these terminal blocks will connect to the new board in exactly the same manner. For AquaLogic, remove the individual wires that will be used and attach to the OmniPL mainboard separately. Many of the connections from the old board will connect to the new OmniPL board at the same locations. Some high voltage wiring will be removed and not used. Refer to the callouts for each of the connections shown below in the diagram.



## 4 Replace the Old PCB with the OmniPL PCB

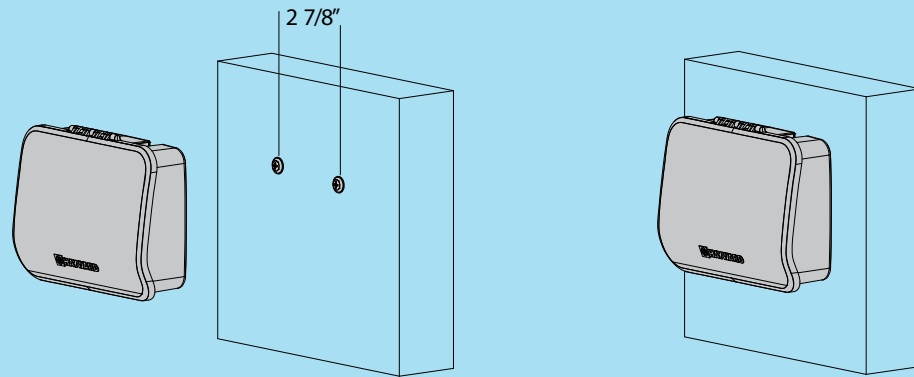
Depending on your model, use either a screwdriver or 5/16 nut driver to loosen or remove the fasteners securing the old PCB to the enclosure. Slide the board up to remove. Place the new OmniPL PCB in the same location and secure with the original fasteners.



## 5 Mount Controller

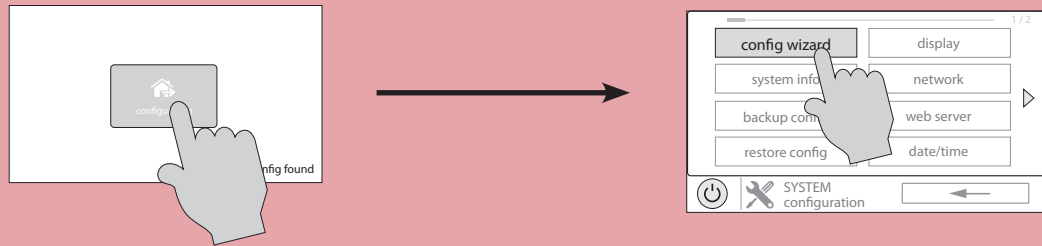
The OmniPL Controller has a 15 ft cord which must plug into the OmniPL PCB. When considering a suitable mounting location, refer to the Pre-Installation Checklist on the front of this Quick Start Guide and mount in a location that is convenient for viewing and changing settings. Allow enough clearance above the enclosure so that the flip door can open fully.

A mounting template is provided in the Installation manual. To install, screw two appropriate fasteners into the mounting surface at the desired location as shown. Tighten until the bottom of the screw heads are 1/8" off the mounting surface then hang the Controller firmly on the screws.



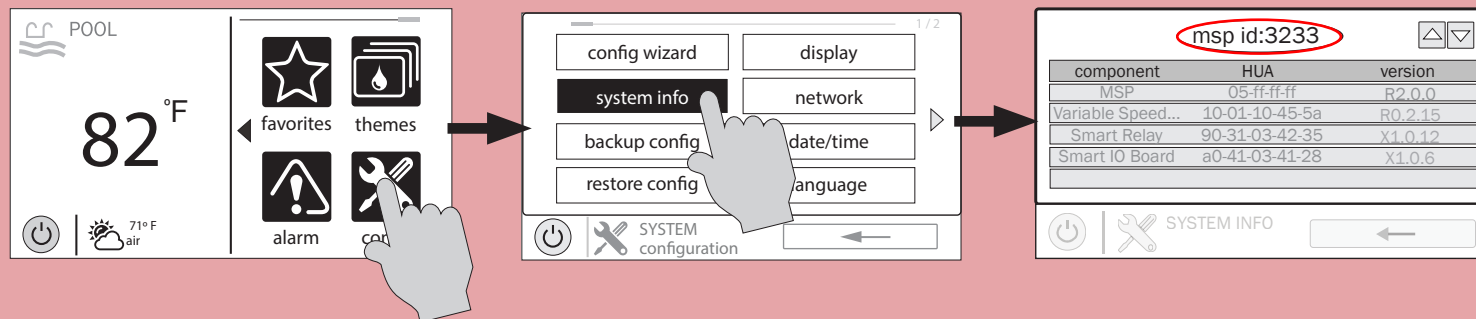
## 7 Start Up, Configuration and Registration

With all connections complete, tuck back all the wiring to prepare for the deadfront installation. Locate the new deadfront and knockout all appropriate breaker locations. Install the new deadfront panel and reattach the door. Turn on power to the OmniPL. The OmniPL will power on and prompt you to begin configuration (see below). The Configuration Wizard will ask you general questions relating to your pool/spa and specific questions about connected pool equipment. Configuring the OmniPL requires knowledge of all of the connected pool equipment. Refer to your worksheets and Connection Table from Step 1 while configuring the OmniPL.



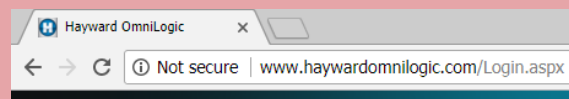
After configuration, the OmniPL can be controlled from your mobile device. You must first create an account and register your OmniPL at haywardomnilogic.com. Follow the steps below to register.

### Find your MSP ID



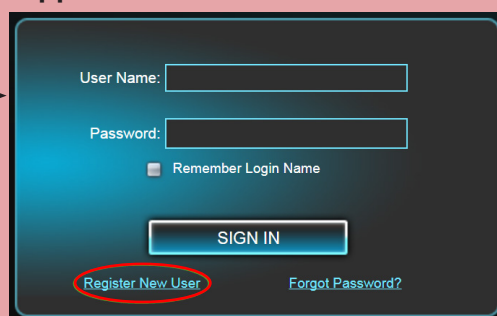
### Create a OmniLogic Account using OmniLogic App or PC

Type "haywardomnilogic.com" into your web browser.



User Name: \_\_\_\_\_

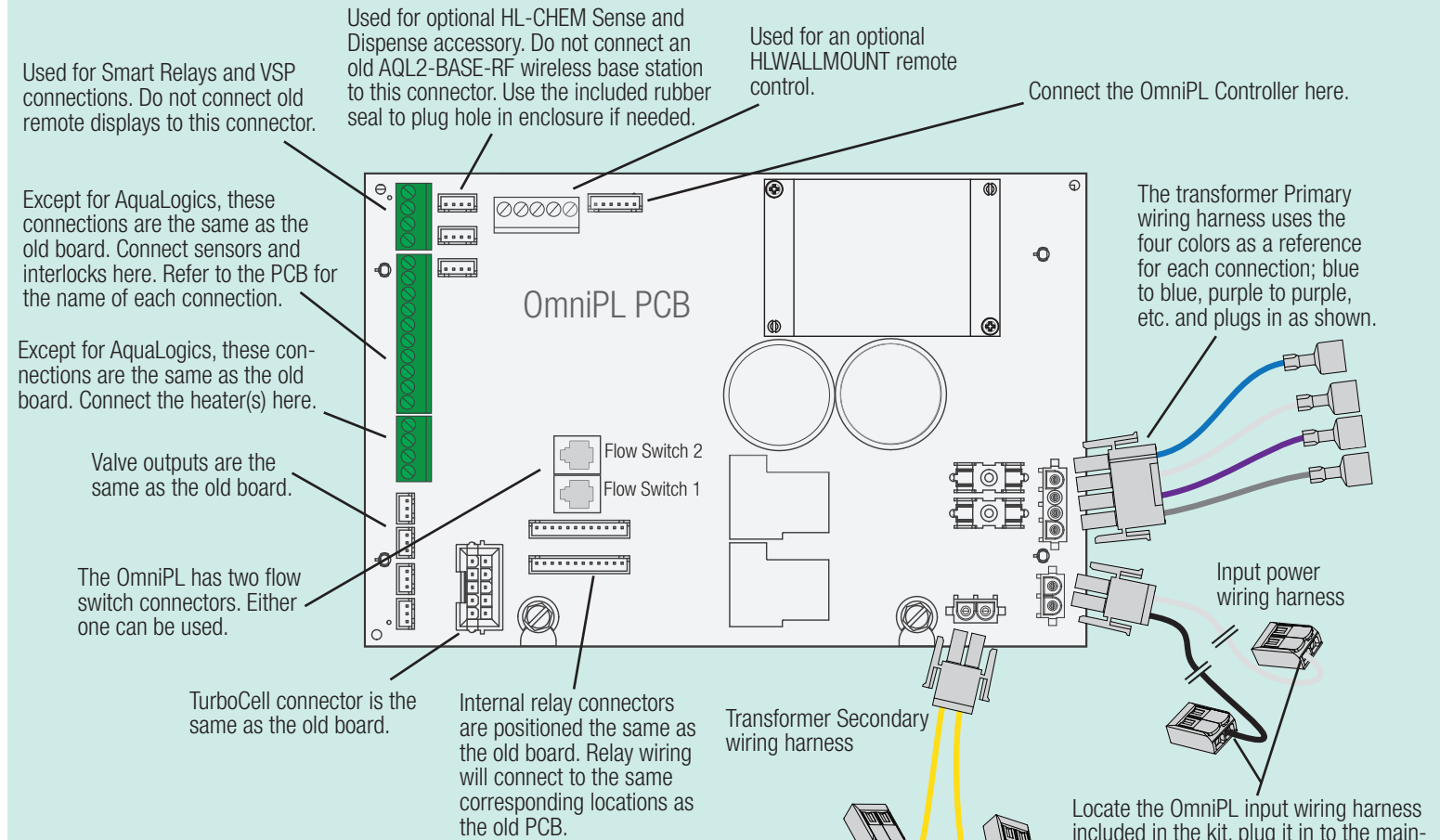
Password: \_\_\_\_\_



Select "Register New User" at the bottom of the screen. Input your information on the following screen and select "Save". Make note of your user name and password on the lines provided to the left.

## 6 Install Wiring to OmniPL PCB

Connect the wiring from the old PCB to the new OmniPL PCB. Unless upgrading an AquaLogic, green terminal blocks can connect in the same locations as the old PCB. Refer to the wiring connection callouts below.



The OmniPL secondary transformer wiring harness included in the kit plugs it into the mainboard as shown. Strip back wires 0.4" and attach two lever type wire nuts according to the diagram above. Locate the two yellow leads from the transformer secondary (refer to Step 3). Cut off the spade connectors and strip wires back 0.4". Insert stripped bare leads into the wire nuts and close the levers to secure. Be sure that no bare wire can be seen coming out of the wire nuts.

Locate the OmniPL input wiring harness included in the kit, plug it in to the mainboard as shown, and then cut to desired length. Strip back wires 0.4" and attach two lever type wire nuts as shown. Locate the black and white power leads. Cut off the spade connectors and strip wires back 0.4". Insert stripped bare leads into wire nuts and close levers to secure. Be sure that no bare wire can be seen coming out of the wire nuts.

### Register the OmniPL

Log in to your new OmniLogic account. Read the disclaimer after logging in and press continue. Input your MSP ID on the following screen and fill out the remaining information.

### Control your pool from the OmniLogic App or your PC

Now that your OmniPL has been registered, you can control your pool remotely from your PC, laptop, or mobile device. For computers, go to haywardomnilogic.com and log in to your account. For mobile devices, download the OmniLogic app from you device's app store, then log in to your account.

### OmniPL Operation

For information about operation (turning on equipment, setting schedules, changing heater settings, etc.), refer to the OmniPL Retrofit Kit Operation manual.