

PRODUCT INFORMATION PACKET



Model No: EVQ165
Catalog No: EVQ165

VGreen® Variable Speed Motors Pool Pump Motor, 1.65/1.50 HP, 1 Ph, 50 Hz, 230/115 V, 48Y Frame, TEFC



Regal and Century are trademarks of Regal Rexnord Corporation or one of its affiliated companies.

©2023 Regal Rexnord Corporation, All Rights Reserved. MC017097E





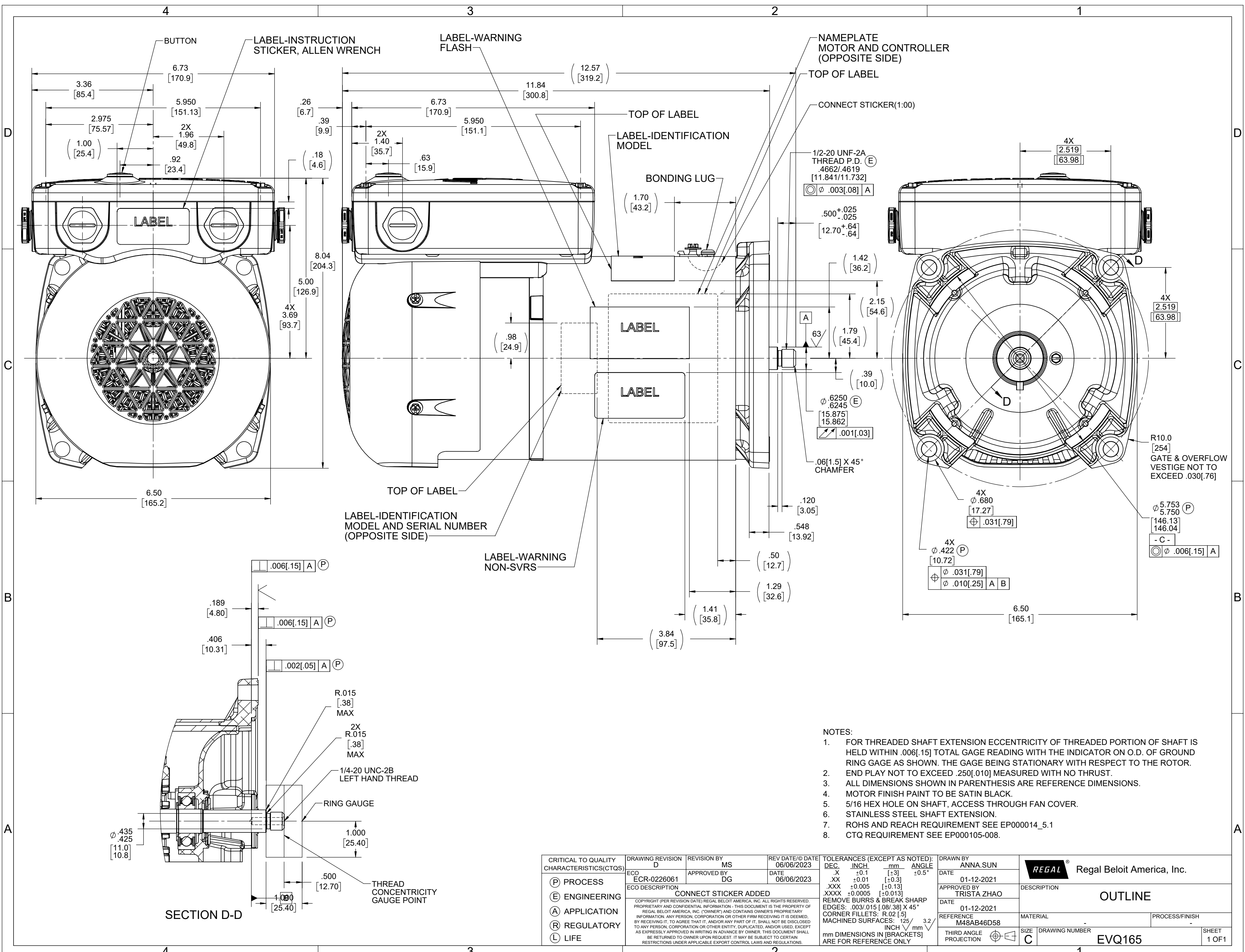
Nameplate Specifications

Phase	1	Output HP	1.65/1.50 Hp
Output KW	1.2 kW	Voltage	230/115 V
Speed	600-3450 rpm	Service Factor	1
Frame	48Y	Enclosure	Totally Enclosed Fan Cooled
Thermal Protection	Automatic	Ambient Temperature	50 °C
Frequency	50 Hz	Current	10.5/17.7 MAX A
Duty	Continuous	Insulation Class	F
UL	Recognized	CSA	N
CE	Y	Number of Speeds	VAR

Technical Specifications

Rotation	Clockwise Lead End	Mounting	Round
Drive End Bearing	Ball	Opp Drive End Bearing	Ball
Frame Material	Rolled Steel	Shaft Type	Threaded
Frame Length	8.68 in	Shaft Diameter	0.625 in
Shaft Extension	1/2-20 THREAD in		
Outline Drawing	EVQ165		

This is an uncontrolled document once printed or downloaded and is subject to change without notice. Date Created:06/10/2023



- NOTES:
- FOR THREADED SHAFT EXTENSION ECCENTRICITY OF THREADED PORTION OF SHAFT IS HELD WITHIN .006[.15] TOTAL GAGE READING WITH THE INDICATOR ON O.D. OF GROUND RING GAGE AS SHOWN. THE GAGE BEING STATIONARY WITH RESPECT TO THE ROTOR. END PLAY NOT TO EXCEED .250[.010] MEASURED WITH NO THRUST.
 - ALL DIMENSIONS SHOWN IN PARENTHESIS ARE REFERENCE DIMENSIONS.
 - MOTOR FINISH PAINT TO BE SATIN BLACK.
 - 5/16 HEX HOLE ON SHAFT, ACCESS THROUGH FAN COVER.
 - STAINLESS STEEL SHAFT EXTENSION.
 - ROHS AND REACH REQUIREMENT SEE EP000014_5.1
 - CTQ REQUIREMENT SEE EP000105-008.

CRITICAL TO QUALITY CHARACTERISTICS(CTQS)	DRAWING REVISION	REVISION BY	REV DATE/© DATE	TOLERANCES (EXCEPT AS NOTED):				DRAWN BY	REGAL® Regal Beloit America, Inc.	
	D	MS	06/06/2023	DEC.	INCH	mm	ANGLE	ANNA.SUN	DATE	01-12-2021
(P) PROCESS	ECO	APPROVED BY	DATE	.X	±0.1	[+3]	±0.5°	TRISTA ZHAO	APPROVED BY	DESCRIPTION
(E) ENGINEERING	ECR-0226061	DG	06/06/2023	.XX	±0.01	[±0.3]		TRISTA ZHAO	DATE	01-12-2021
(A) APPLICATION	ECO DESCRIPTION			.XXX	-0.005	[±0.13]		DATE	01-12-2021	MATERIAL
(R) REGULATORY	CONNECT STICKER ADDED			.XXXX	±0.0005	[±0.013]		REFERENCE	M48AB46D58	PROCESS/FINISH
(L) LIFE	COPYRIGHT (PER REVISION DATE) REGAL BELOIT AMERICA, INC. ALL RIGHTS RESERVED. PROPRIETARY AND CONFIDENTIAL INFORMATION - THIS DOCUMENT IS THE PROPERTY OF REGAL BELOIT AMERICA, INC. ("OWNER") AND CONTAINS OWNER'S PROPRIETARY INFORMATION. ANY PERSON, CORPORATION OR OTHER FIRM RECEIVING IT IS DEEMED, BY RECEIVING IT, TO AGREE THAT IT, AND/OR ANY PART OF IT, SHALL NOT BE DISCLOSED TO ANY PERSON, CORPORATION OR OTHER ENTITY, DUPLICATED, AND/OR USED, EXCEPT AS EXPRESSLY APPROVED IN WRITING IN ADVANCE BY OWNER. THIS DOCUMENT SHALL BE RETURNED TO OWNER UPON REQUEST. IT MAY BE SUBJECT TO CERTAIN RESTRICTIONS UNDER APPLICABLE EXPORT CONTROL LAWS AND REGULATIONS.			REMOVE BURRS & BREAK SHARP EDGES: .003/.015 [.08/.38] X 45°		CORNER FILLETS: R.02 [5]		THIRD ANGLE PROJECTION	SIZE	DRAWING NUMBER
				MACHINED SURFACES: .125/ 3.2		mm DIMENSIONS IN [BRACKETS] INCH/mm		C		EVQ165
										SHEET 1 OF 1