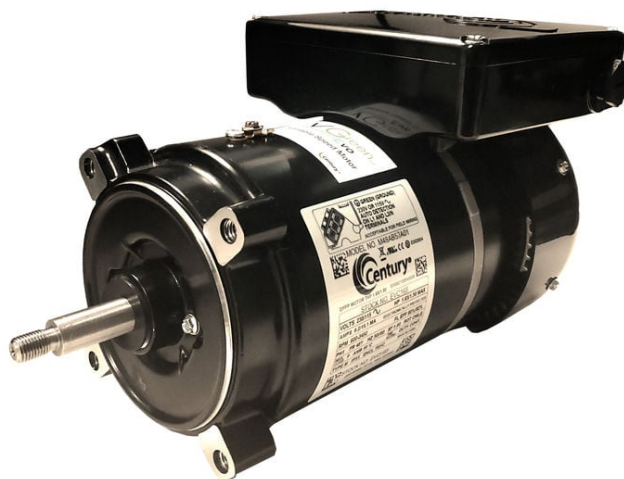


PRODUCT INFORMATION PACKET



Model No: EVC165
Catalog No: EVC165

VGreen® Variable Speed Motors Pool Pump Motor, 1.65/1.50 HP, 1 Ph, 50 Hz, 230/115 V, 56J Frame, TEFC



Regal and Century are trademarks of Regal Rexnord Corporation or one of its affiliated companies.

©2023 Regal Rexnord Corporation, All Rights Reserved. MC017097E





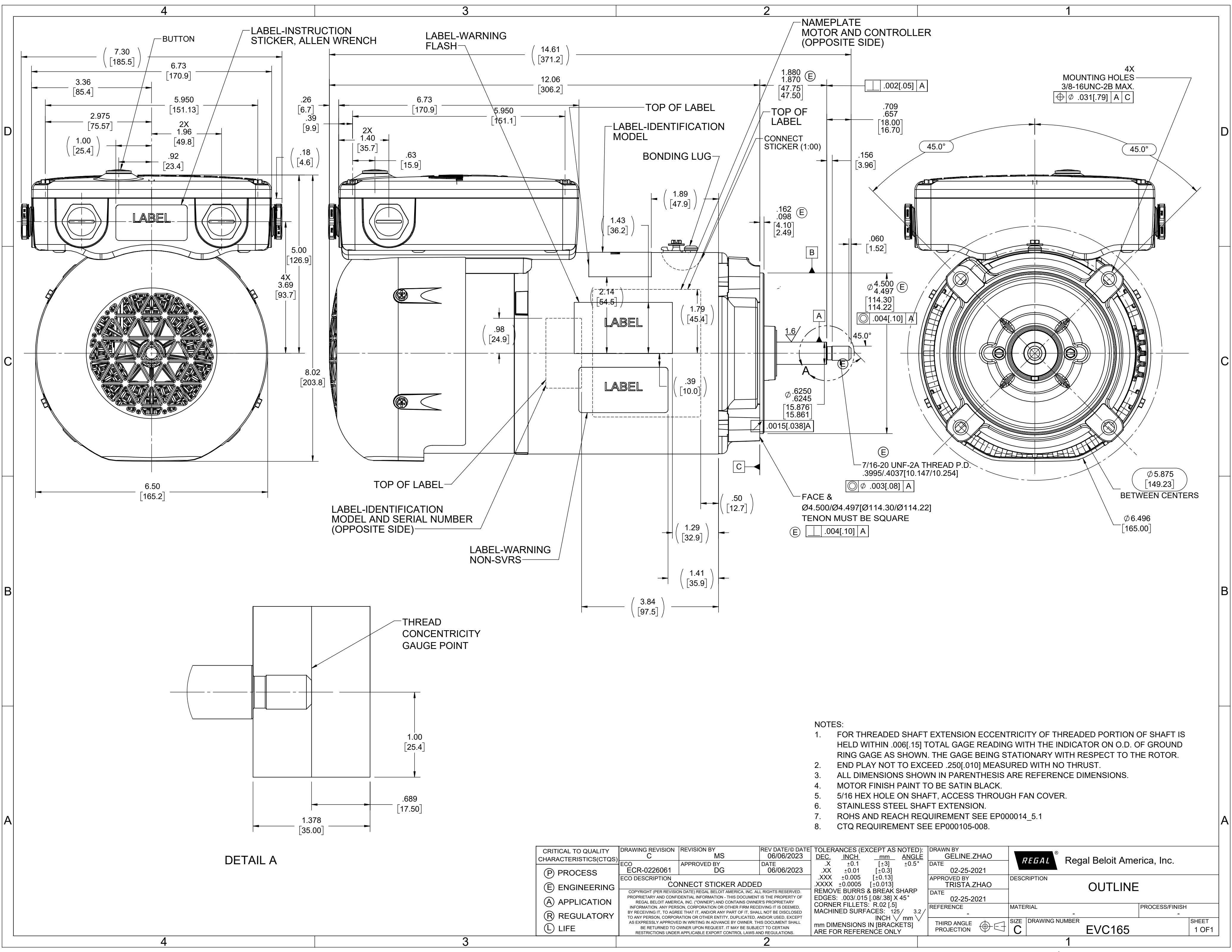
Nameplate Specifications

Phase	1	Output HP	1.65/1.50 Hp
Output KW	1.2 kW	Voltage	230/115 V
Speed	600-3450 rpm	Service Factor	1
Frame	56J	Enclosure	Totally Enclosed Fan Cooled
Thermal Protection	Automatic	Ambient Temperature	50 °C
Frequency	50 Hz	Current	10.5/17.7 MAX A
Duty	Continuous	Insulation Class	F
UL	Recognized	CSA	N
CE	Y	Number of Speeds	VAR

Technical Specifications

Rotation	Clockwise Lead End	Mounting	Round
Drive End Bearing	Ball	Opp Drive End Bearing	Ball
Frame Material	Rolled Steel	Shaft Type	Threaded
Frame Length	8.68 in	Shaft Diameter	0.625 in
Shaft Extension	7/16-20 THREAD in		
Outline Drawing	EVC165		

This is an uncontrolled document once printed or downloaded and is subject to change without notice. Date Created:06/10/2023



- NOTES:
1. FOR THREADED SHAFT EXTENSION ECCENTRICITY OF THREADED PORTION OF SHAFT IS HELD WITHIN .006[.15] TOTAL GAGE READING WITH THE INDICATOR ON O.D. OF GROUND RING GAGE AS SHOWN. THE GAGE BEING STATIONARY WITH RESPECT TO THE ROTOR.
 2. END PLAY NOT TO EXCEED .250[.010] MEASURED WITH NO THRUST.
 3. ALL DIMENSIONS SHOWN IN PARENTHESIS ARE REFERENCE DIMENSIONS.
 4. MOTOR FINISH PAINT TO BE SATIN BLACK.
 5. 5/16 HEX HOLE ON SHAFT, ACCESS THROUGH FAN COVER.
 6. STAINLESS STEEL SHAFT EXTENSION.
 7. ROHS AND REACH REQUIREMENT SEE EP000014_5.1
 8. CTQ REQUIREMENT SEE EP000105-008.

CRITICAL TO QUALITY CHARACTERISTICS(CTQS)	DRAWING REVISION C	REVISION BY MS	REV DATE/© DATE 06/06/2023	TOLERANCES (EXCEPT AS NOTED): DEC. INCH mm ANGLE .X ±0.1 [±.3] ±0.5° .XX ±0.01 [±.3] .XXX ±0.005 [±0.13] .XXXX ±0.0005 [±0.013] REMOVE BURRS & BREAK SHARP EDGES: .003/.015 [.08/.38] X 45° CORNER FILLETS: R.02 [.5] MACHINED SURFACES: .125 / 3.2 INCH / mm mm DIMENSIONS IN [BRACKETS] ARE FOR REFERENCE ONLY	DRAWN BY GELINE.ZHAO	Regal Beloit America, Inc.				
	ECO ECR-0226061	APPROVED BY DG	DATE 06/06/2023		DATE 02-25-2021					
	ECO DESCRIPTION CONNECT STICKER ADDED				APPROVED BY TRISTA.ZHAO					
	COPYRIGHT (PER REVISION DATE) REGAL BELOIT AMERICA, INC. ALL RIGHTS RESERVED. PROPRIETARY AND CONFIDENTIAL INFORMATION - THIS DOCUMENT IS THE PROPERTY OF REGAL BELOIT AMERICA, INC. (OWNER) AND CONTAINS OWNER'S PROPRIETARY INFORMATION. ANY PERSON, CORPORATION OR OTHER FIRM RECEIVING IT IS DEEMED, BY RECEIVING IT, TO AGREE THAT IT, AND/OR ANY PART OF IT, SHALL NOT BE DISCLOSED TO ANY PERSON, CORPORATION OR OTHER ENTITY, DUPLICATED, AND/OR USED, EXCEPT AS EXPRESSLY APPROVED IN WRITING IN ADVANCE BY OWNER. THIS DOCUMENT SHALL BE RETURNED TO OWNER UPON REQUEST. IT MAY BE SUBJECT TO CERTAIN RESTRICTIONS UNDER APPLICABLE EXPORT CONTROL LAWS AND REGULATIONS.				DATE 02-25-2021					
					REFERENCE -					
(P) PROCESS					THIRD ANGLE PROJECTION 	SIZE C	DRAWING NUMBER EVC165	PROCESS/FINISH -	SHEET 1 OF 1	
(E) ENGINEERING										MATERIAL -
(A) APPLICATION										
(R) REGULATORY										
(L) LIFE										