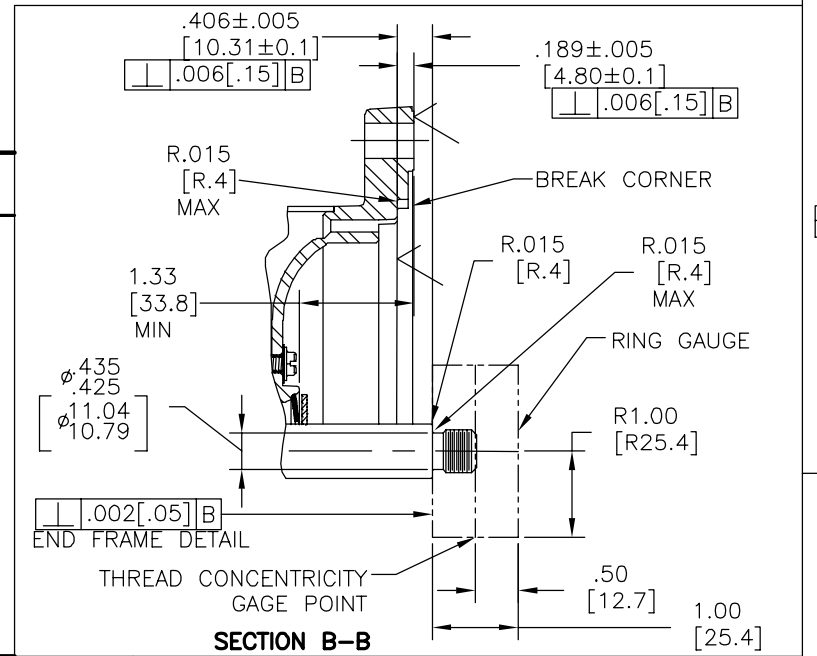
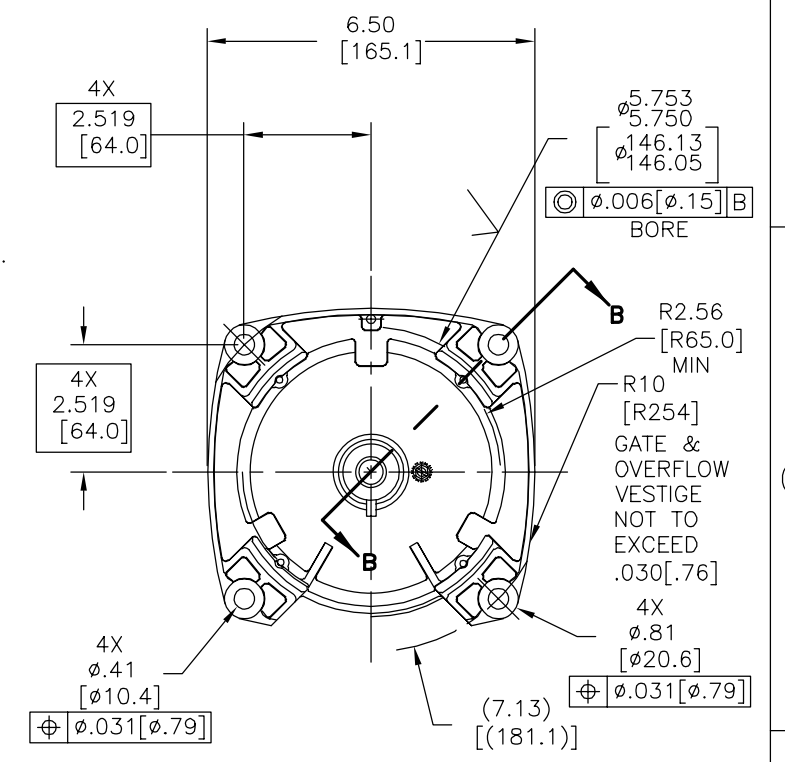
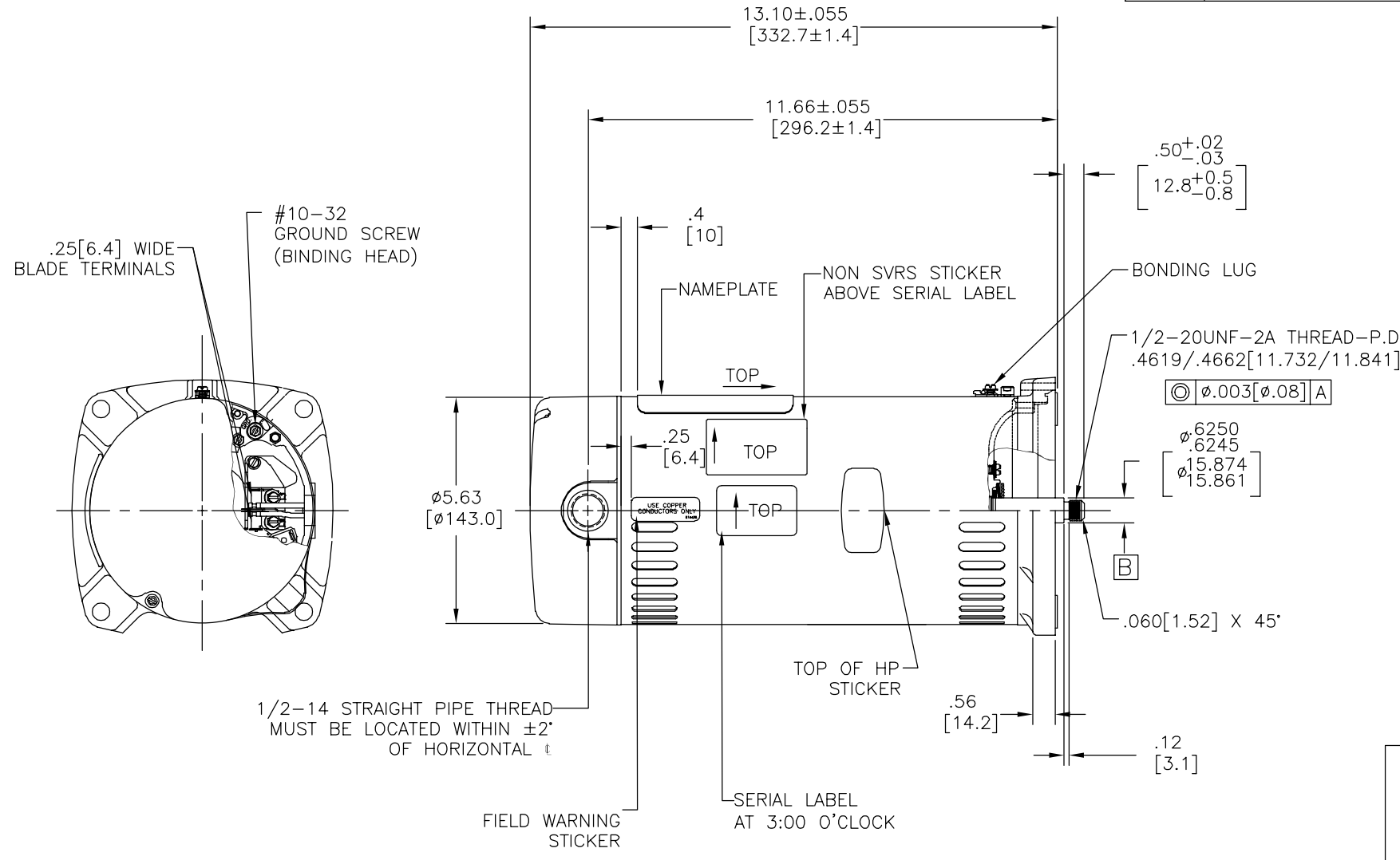


REV	ECO	REV BY	DATE	APPD	DATE
K	0025584	J.AGUILERA	04-25-2012	R.RASCON	04-25-2012



NAMEPLATE DATA	EXTERNAL CONNECTION DIAGRAM	NOTES
MODEL: C48L2PA105C5 CUST PN: USQ1152 HP: 1.5 SF: 1.1 ROT: CCWPE RPM: 3450 TYPE: UAC CODE: J FORM: FRAME: 48Y VOLTS: 115/230 AMPS: MAX AMPS: 19.2/9.6 SF AMPS: - PH: 1 HZ: 60 INS: B AMB: 50C DUTY: CONT ENCLOSURE: ODP THERMALLY-PROTECTED		<ol style="list-style-type: none"> 1. FINISH PAINT TO BE SATIN BLACK. 2. .44 [11.2] WRENCH FLATS ON SHAFT-FOR ACCESS TO THIS WRENCH FLAT REMOVE END COVER. 3. STAINLESS STEEL SHAFT EXT 4. LIMITS ON AMPLITUDE OF VIBRATION MEASURED AT BEARING HOUSING = .001 [.02] 5. CONNECTED FOR 230 VOLTS. QUICK VOLTAGE CHANGE DIAL INCLUDED ON THE TERMINAL BOARD. 6. SUPPORT PAD TO BE PACKED WITH EACH MOTOR

PERFORMANCE CURVE	APPROVED SAMPLE		
C48L2W27			
UL COMPONENT	CSA		
FILE#	CCN#	FILE#	GUIDE#
E46412	PRGY2	LR43341	4211-01
CUSTOMER	DIST. SERVICES		

GEOMETRIC CHARACTERISTICS & SYMBOLS

- FLATNESS
- STRAIGHTNESS
- ∠ ANGULARITY
- ⊥ PERPENDICULARITY (SQUARENESS)
- // PARALLELISM
- ROUNDNESS (CIRCULARITY)
- ∅ CYLINDRICITY
- △ PROFILE OF ANY SURFACE
- ∇ PROFILE OF ANY LINE
- ↑ RUNOUT
- ⊕ TRUE POSITION
- ◎ CONCENTRICITY
- ≡ SYMMETRY

ASME Y14.5M 1994

UNLESS OTHERWISE SPECIFIED DIM. TOLERANCES ARE AS FOLLOWS:

INCH	±.1	±.02	±.005	±.0005
mm	±0.5	±0.13	±0.013	

ANG. ±.50 DEG
 REMOVE BURRS & BREAK SHARP EDGES:
 INCH .003-.015 mm 0.1-0.4
 CORNER FILLETS TO:
 INCH .020 mm 0.5
 MACHINE SURFACES:
 INCH 125 mm 3.2

METRIC DIMS. SHOWN IN [BRACKETS]

DR BY: JLG 5-12-09

APPD:

THIRD ANGLE PROJECTION

EDS DATE 11-11-2011
 FORMAT REV G

CONFIDENTIAL: THIS DRAWING AND ITS INFORMATION ARE THE EXCLUSIVE AND CONFIDENTIAL PROPERTY OF REGAL-BELOIT CORPORATION AND ARE NOT TO BE DISCLOSED, DUPLICATED, DISTRIBUTED OR OTHERWISE USED WITHOUT THE WRITTEN CONSENT OF REGAL-BELOIT CORPORATION. -ALL RIGHTS RESERVED.

REGAL-BELOIT CORPORATION

DESCRIPTION: MODEL-PFHP-48FR OUTLINE

SIZE: C DWG NO: USQ1152

SCALE: NONE SHEET: 1

4

3

2

1

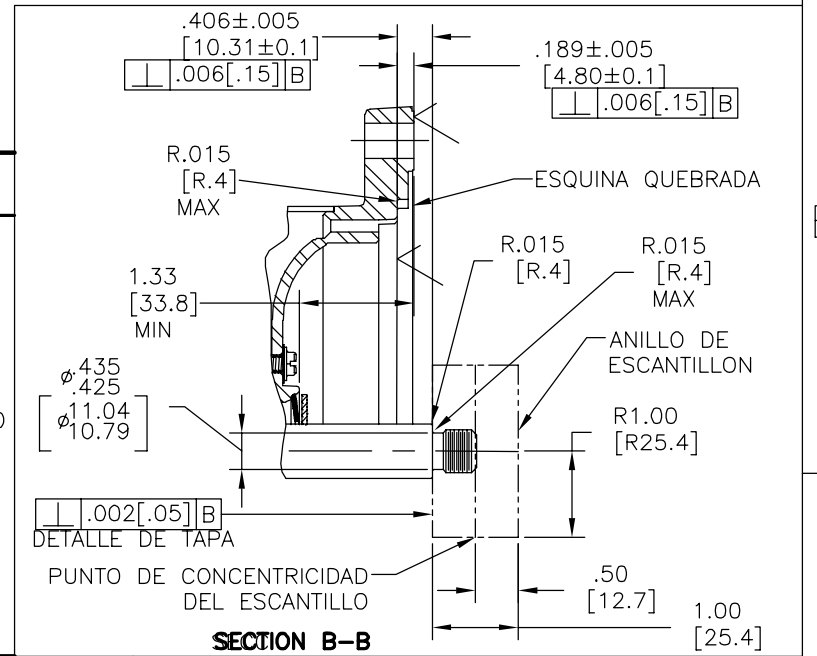
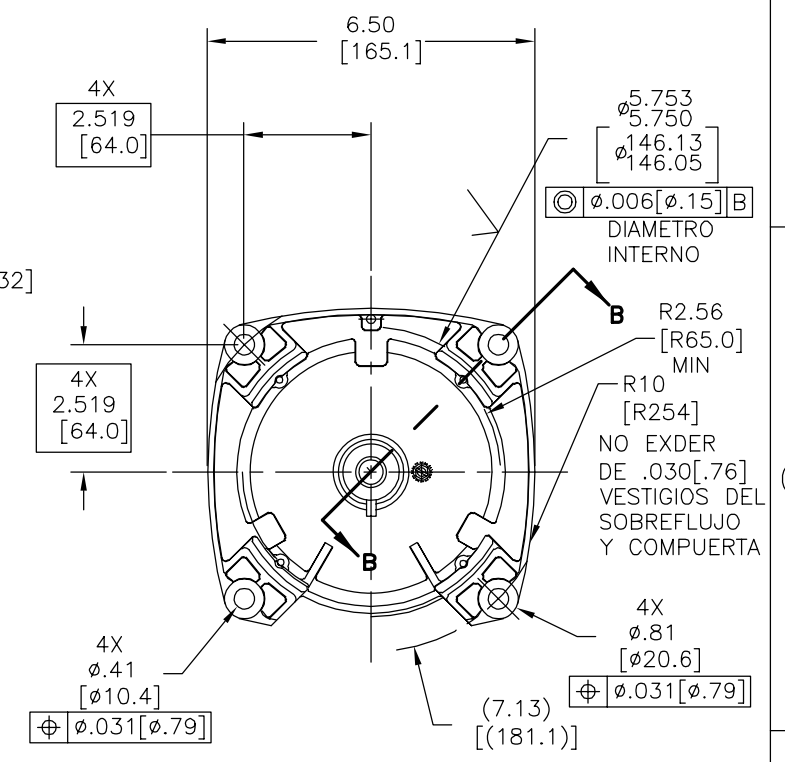
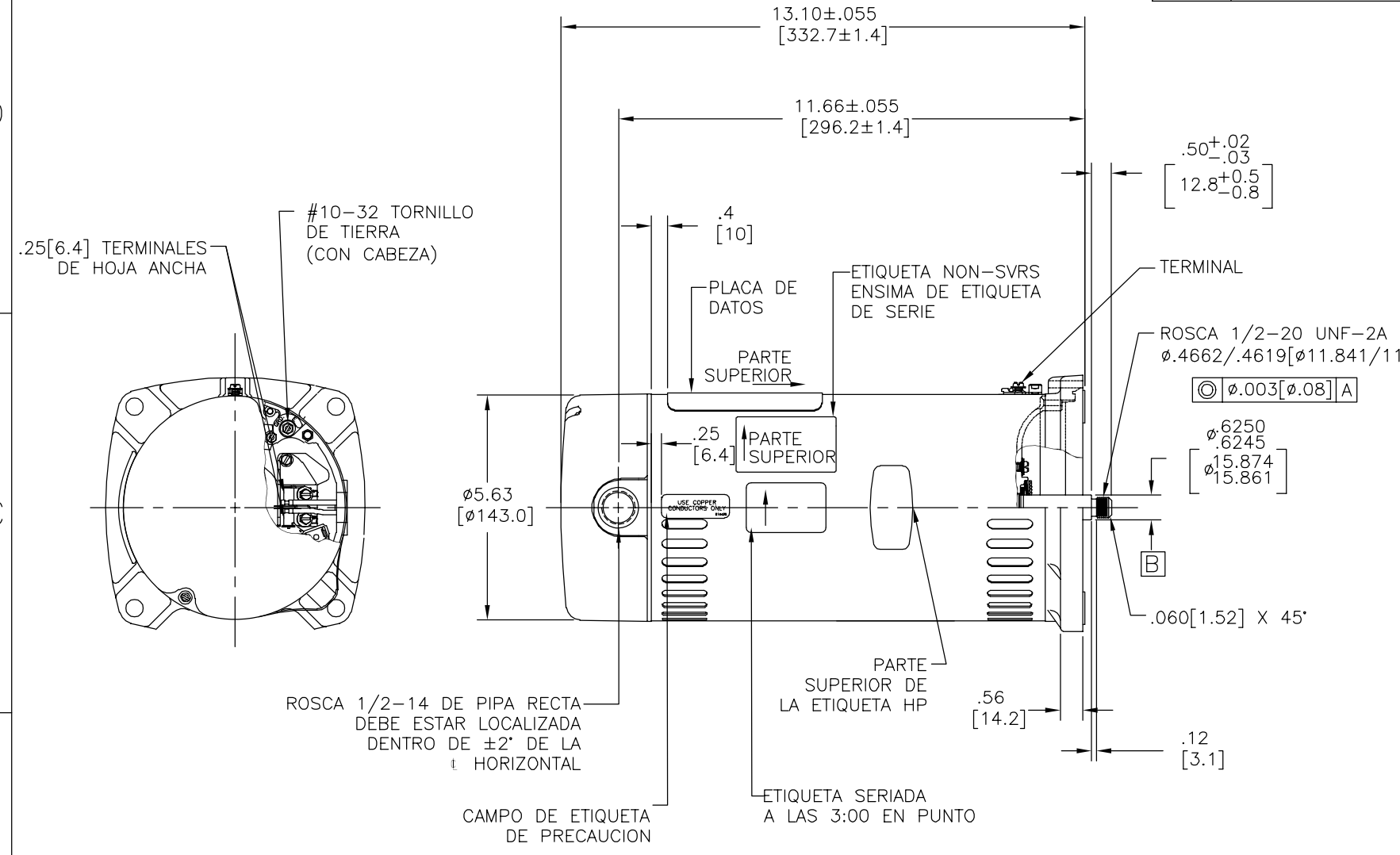
4

3

2

1

REVISION:	ECO	REVISADO POR:	FECHA:	APROBADO POR:	FECHA:
K	0025584	J.AGUILERA	04-25-2012	R.RASCON	04-25-2012



PLACA DE DATOS	DIAGRAMA EXTERNO DE CONEXION	NOTAS
MODEL: C48L2PA105C5 CUST PN: USQ1152 HP: 1.5 SF: 1.1 ROT: CCWPE RPM: 3450 TYPE: UAC CODE: J FORM: FRAME: 48Y VOLTS: 115/230 AMPS: MAX AMPS: 19.2/9.6 SF AMPS: - PH: 1 HZ: 60 INS: B AMB: 50C DUTY: CONT ENCLOSURE: ODP THERMALLY-PROTECTED	<p>GRD GREEN (GROUND)</p> <p>HIGH VOLTAGE SHOWN. ROTATE DIAL CCW TO 115 FOR LOW VOLTAGE.</p> <p>USE COPPER CONDUCTORS ONLY. INSTALL MOTOR WITH VENTS DOWN. ACCEPTABLE FOR FIELD WIRING</p>	1. EL ACABADO DE LA PINTURA DEBE SER NEGRO 2. LLAVE PLANA EN LA FLECHA .44[11.2] PARA ACCESAR A ESTA LLAVE PLANA REMOVER LA CUBIERTA 3. EXTENSION DE FLECHA DE ACERO INOXIDABLE 4. LIMITES PARA AMPLITUD DE VIBRACION MEDIDA EN LA CAVIDAD DEL BALERO = .001[.03] 5. CONECTADO A 230 VOLTIOS. MARCAR EL RAPIDO VOLTAJE INCLUIDA EN EL TABLERO DE TERMINALES 6. SOPORTE ATENUADOR DEBE SER EMPACADO CON CADA MOTOR

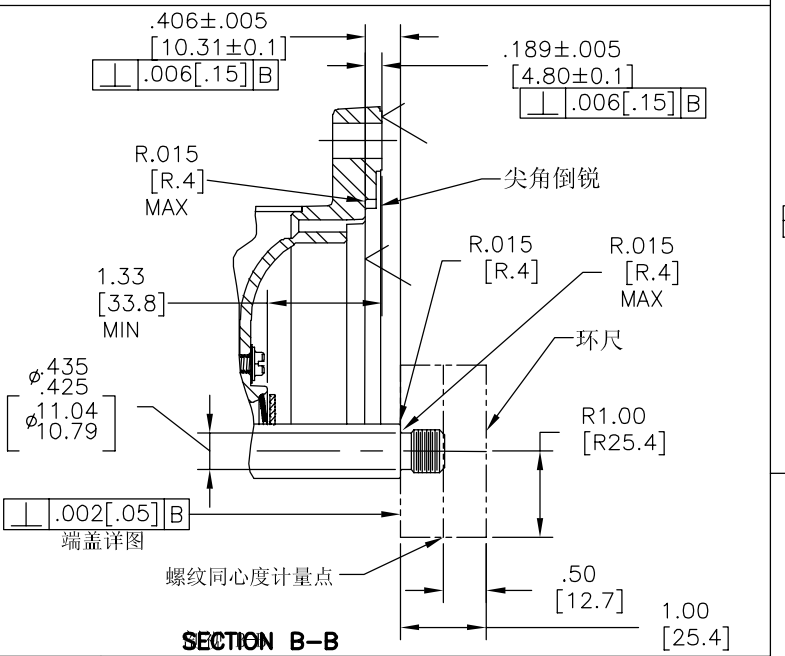
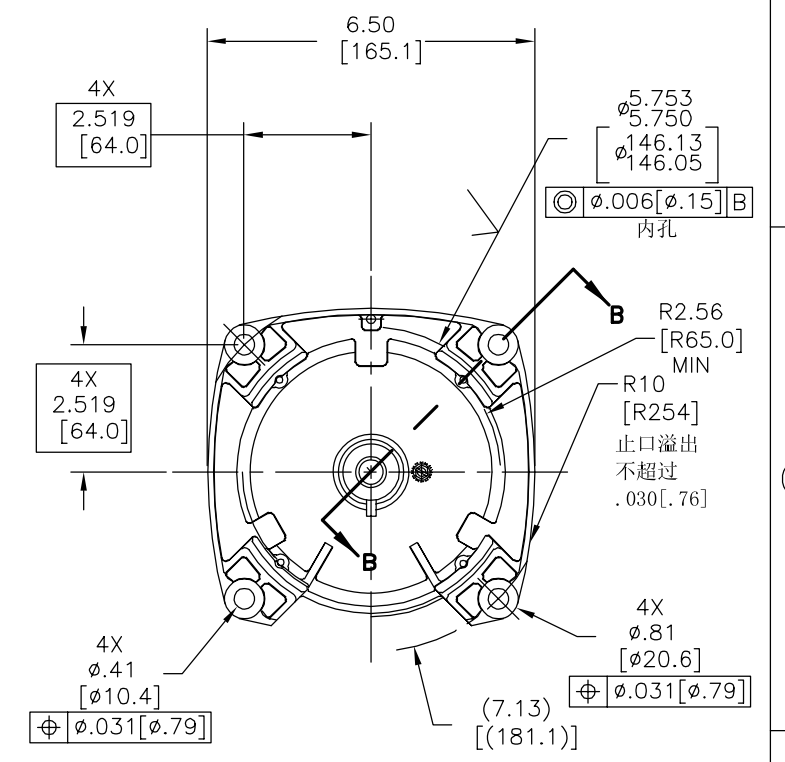
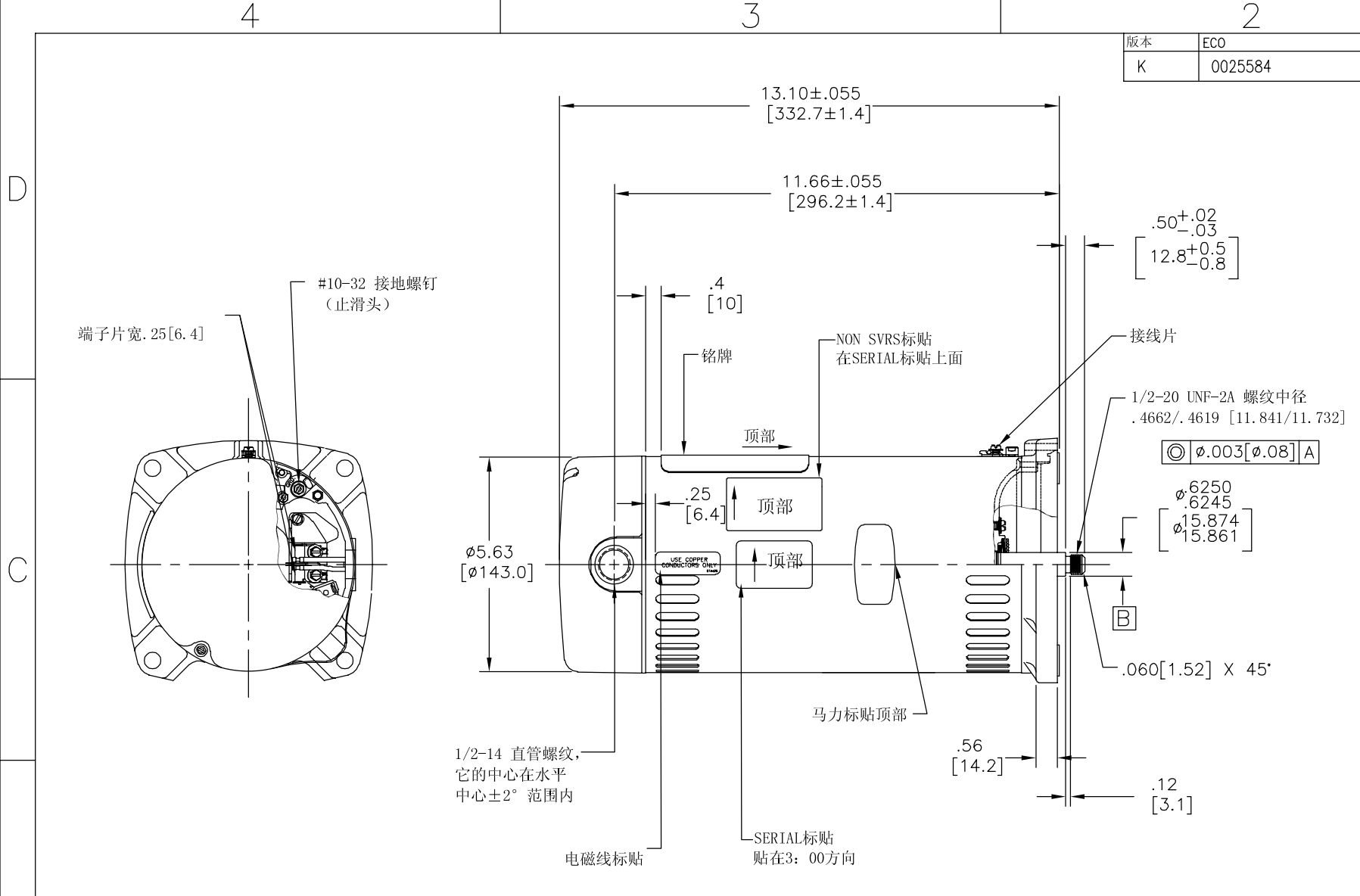
PERFORMANCE CURVE	APPROVED SAMPLE
C48L2W27	CSA
UL COMPONENT	FILE#
E46412	LR43341
CUSTOMER	DIST. SERVICES

CARACTERISTICAS DE GEOMETRIA Y SIMBOLOS □ PLANICIDAD - RECTITUD < ANGULARIDAD ⊥ PERPENDICULARIDAD (A ESCUADRA) // PARALELISMO ○ REDONDEZ (CIRCULARIDAD) ∅ CILINDRICIDAD △ PERFIL DE CUALQUIER SUPERFICIE ∇ PERFIL DE CUALQUIER LINEA ↑ VARIACION ⊕ POSICION REAL ⊙ CONCENTRICIDAD = SIMETRIA	A MENOS QUE SE ESPECIFIQUE DE OTRA MANERA, LAS TOLERANCIAS DE LAS DIMS; SON LAS SIGUIENTES: PULG ±.1 ±.02 ±.005 ±.0005 mm ±0.5 ±0.13 ±0.013 ANG. ±50 GRADOS ELIMINAR REBABAS Y ORILLAS FILOSAS DEL BORDE. PULG .003-.015 mm 0.1-0.4 FILETEAR ESQUINA: PULG .020 mm 0.5 MAQUINAR SUPERFICIES PULG 125 mm 3.2 DIMS METRICAS MOSTRADAS [PARENTESIS]
---	---

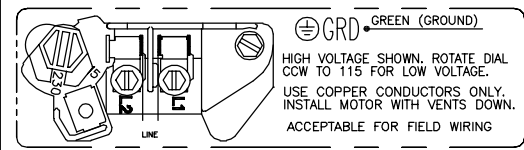
DIBUJADO POR:	5-12-09
APROBADO POR:	
TERCER ANGULO DE PROYECCION	FECHA EDS: 11-11-2011
	REV. FORMATO: G
CONFIDENCIAL: ESTE DIBUJO Y SU INFORMACION SON PROPIEDAD DE USO EXCLUSIVO Y CONFIDENCIAL DE REGAL-BELOIT CORPORATION. Y NO DEBERAN SER REVELADOS, DUPLICADOS, DISTRIBUIDOS O USARSE DE OTRA MANERA SIN EL CONSENTIMIENTO ESCRITO DE REGAL-BELOIT CORPORATION. -TODOS LOS DERECHOS RESERVADOS.	

DESCRIPCION:	
MODEL-PFHP-48FR OUTLINE	
TAMAÑO: C	NUMERO DE DIBUJO: USQ1152
ESCALA: NONE	HOJA: 1

版本	ECO	编制	日期	批准	日期
K	0025584	J.AGUILERA	04-25-2012	R.RASCON	04-25-2012



MODEL: C48L2PA105C5
 CUST PN: USQ1152
 HP: 1.5 SF: 1.1
 ROT: CCWPE
 RPM: 3450
 TYPE: UAC CODE: J
 FORM: FRAME: 48Y
 VOLTS: 115/230
 AMPS:
 MAX AMPS: 19.2/9.6
 SF AMPS: -
 PH: 1 HZ: 60
 INS: B AMB: 50C
 DUTY: CONT
 ENCLOSURE: ODP
 THERMALLY-PROTECTED



1. 表面处理喷黑漆。
2. 移去后盖可见.44 [11.2] 的扁身。
3. 不锈钢轴伸。
4. 在轴承室测量的振动值最大振幅=.001 [0.03]。
5. 电机接高电压。端子板上包括快速改变电压的插销。
6. 支撑衬垫需和电机一起包装

PERFORMANCE CURVE	APPROVED SAMPLE	形位公差	
C48L2W27		□ 平面度	除另有注明
UL COMPONENT	CSA	— 直线度	尺寸公差如下:
FILE#	CCN#	∠ 倾斜度	英寸 ±.1 ±.02 ±.005 ±.0005
E46412	PRGY2	⊥ 垂直度	毫米 ±0.5 ±0.13 ±0.013
		// 平行度	角度 ±.50 度
		○ 圆度	清理毛刺和尖棱
		⊘ 圆柱度	英寸 .003-.015 毫米 0.1-0.4
		△ 内圆角	内圆角
		∇ 面轮廓度	英寸 .020 毫米 0.5
		∩ 线轮廓度	表面粗糙度
CUSTOMER	DIST. SERVICES	⤴ 圆跳动	英制 125 米制 3.2
		⊕ 位置度	米制尺寸显示在 []
		⊙ 同轴度	
		≡ 对称度	

ASME Y14.5M 1994	除另有注明	绘图:	JLG	5-12-09	名称	REGAL-BELOIT CORPORATION
	尺寸公差如下:	批准:			MODEL-PFHP-48FR	REGAL-BELOIT CORPORATION
	英寸 ±.1 ±.02 ±.005 ±.0005	第三角投影			OUTLINE	
	毫米 ±0.5 ±0.13 ±0.013				USQ1152	
	角度 ±.50 度				图幅	C
	清理毛刺和尖棱				图号	USQ1152
	英寸 .003-.015 毫米 0.1-0.4				比例	NONE
	内圆角				页号	1
	英寸 .020 毫米 0.5					
	表面粗糙度					
	英制 125 米制 3.2					
	米制尺寸显示在 []					

机密: 本图纸及相关信息所有权归REGAL-BELOIT CORPORATION
 未经REGAL-BELOIT CORPORATION书面授权, 不得泄露、
 复制、传播或作其他用途。—版权所有

名称	REGAL-BELOIT CORPORATION
图幅	C
图号	USQ1152
比例	NONE
页号	1