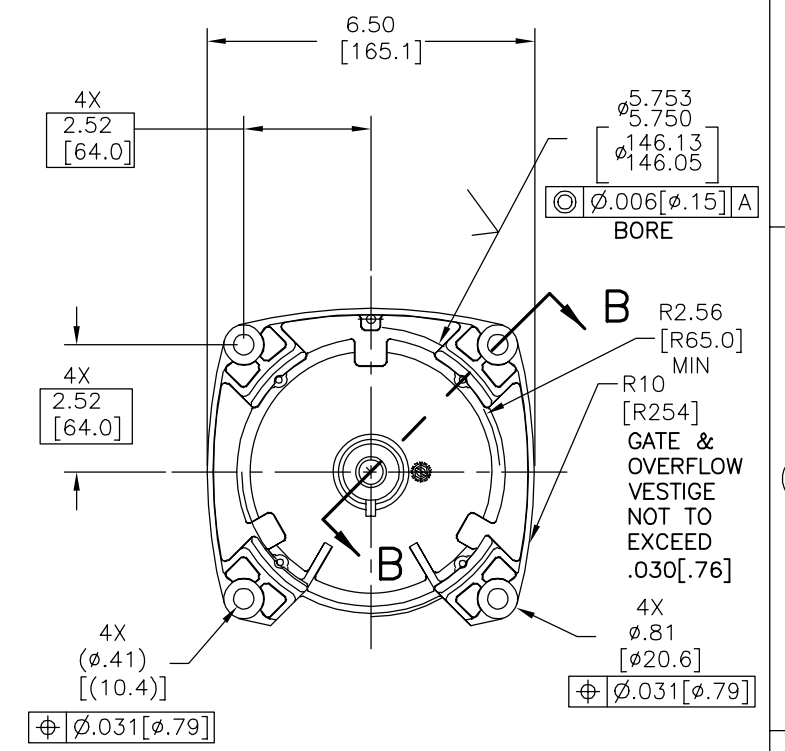
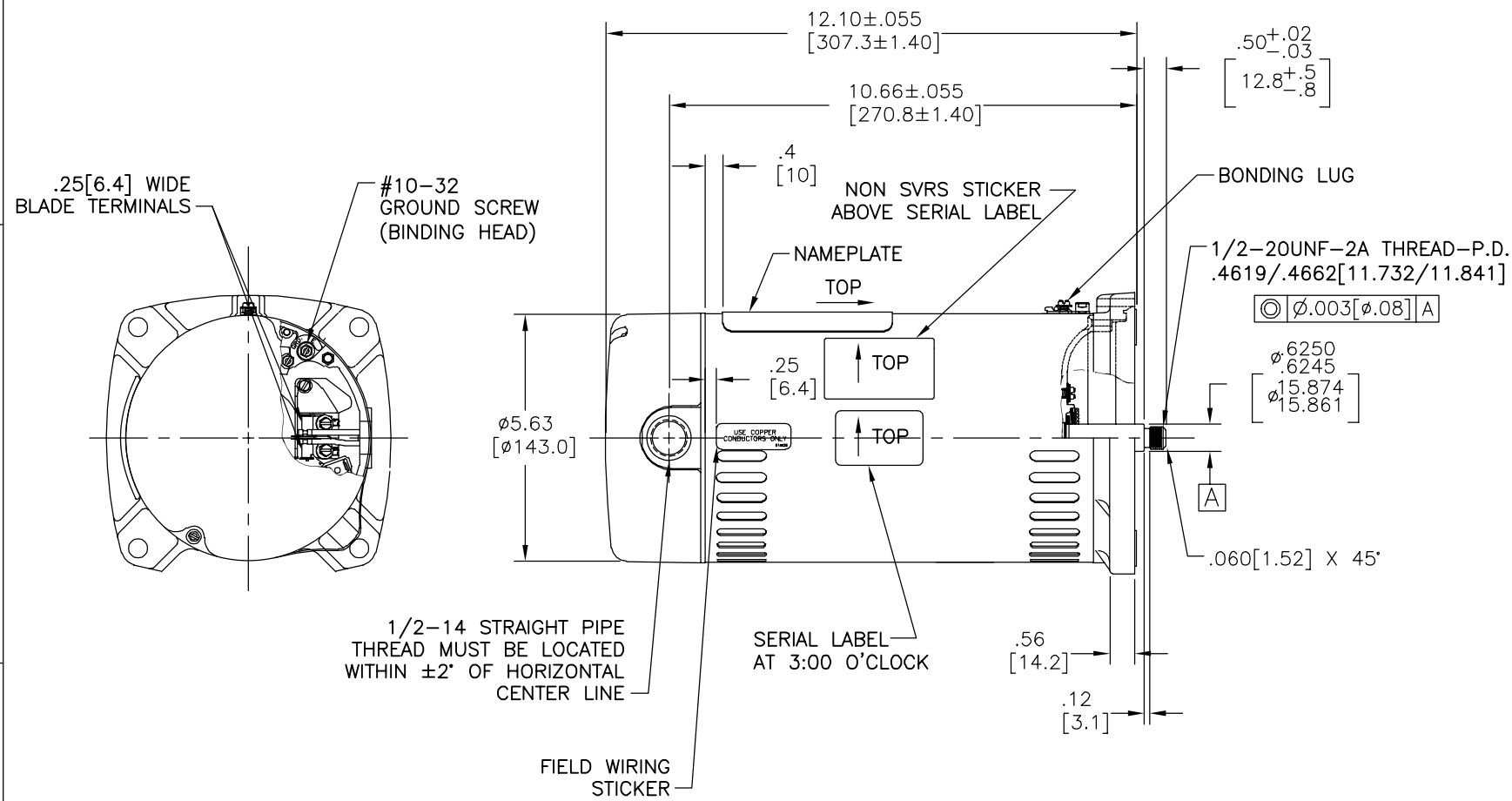
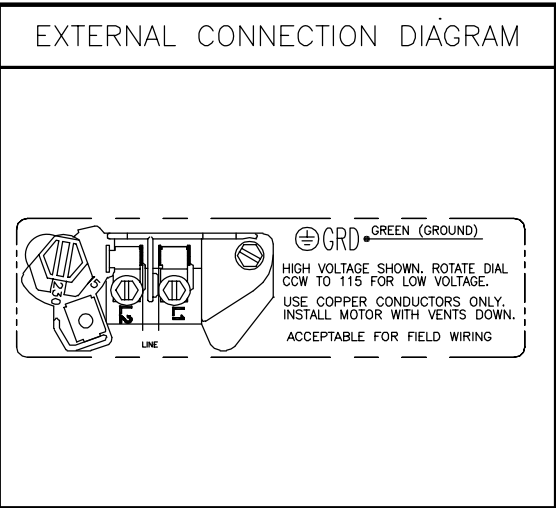


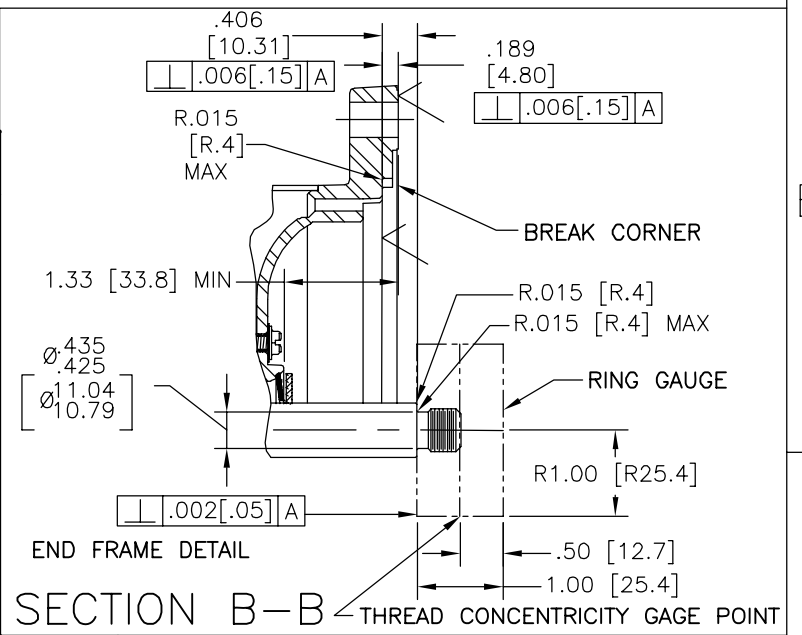
REV	ECO	REV BY	DATE	APPD	DATE
F	0025584	J.AGUILERA	04-25-2012	R.RASCON	04-25-2012



NAMEPLATE DATA	
MODEL: C48K2PA105C5	
CUST PN: USQ1102	
HP: 1.0	SF: 1.25
ROT: CCWPE	
RPM: 3450	
TYPE: UAC	CODE: K
FORM:	FRAME: 48 Y
VOLTS: 115/230	
AMPS:	
MAX AMPS: 15.3/7.6	
SF AMPS: -	
PH: 1	HZ: 60
INS: B	AMB: 52°C
DUTY: CONT	
ENCLOSURE: ODP	
THERMALLY PROTECTED	



- NOTES
1. FINISH PAINT TO BE SATIN BLACK.
  2. .44[11.2] WRENCH FLATS ON SHAFT-FOR ACCESS TO THIS WRENCH FLAT REMOVE END COVER.
  3. STAINLESS STEEL SHAFT EXT.
  4. LIMITS ON AMPLITUDE OF VIBRATION MEASURED AT BEARING HOUSING = .001.
  5. CONNECTED FOR 230 VOLTS. QUICK VOLTAGE CHANGE DIAL INCLUDED ON THE TERMINAL BOARD.
  6. SUPPORT PAD TO BE PACKED WITH EACH MOTOR



PERFORMANCE CURVE	APPROVED SAMPLE		
C48K2W52			
UL COMPONENT	CSA		
FILE#	CCN#	FILE#	GUIDE#
E25022	XEWR2	LR43341	4211-01
CUSTOMER	DISTRIBUTION SERVICES		

GEOMETRIC CHARACTERISTICS & SYMBOLS

- FLATNESS
- STRAIGHTNESS
- ∠ ANGULARITY
- ⊥ PERPENDICULARITY (SQUARENESS)
- // PARALLELISM
- ROUNDNESS (CIRCULARITY)
- ∅ CYLINDRICITY
- △ PROFILE OF ANY SURFACE
- ∩ PROFILE OF ANY LINE
- ↑ RUNOUT
- ⊕ TRUE POSITION
- ◎ CONCENTRICITY
- ≡ SYMMETRY

ASME Y14.5M 1994

UNLESS OTHERWISE SPECIFIED DIM. TOLERANCES ARE AS FOLLOWS:

INCH	±.1	±.02	±.005	±.0005
mm	±0.5	±0.13	±0.013	

ANG. ±.50 DEG  
REMOVE BURRS & BREAK SHARP EDGES:  
INCH .003-.015 mm 0.1-0.4  
CORNER FILLETS TO:  
INCH .020 mm 0.5  
MACHINE SURFACES:  
INCH 125 mm 3.2

METRIC DIMS. SHOWN IN [BRACKETS]

DR BY: JLG 5-12-09

APPD:

THIRD ANGLE PROJECTION

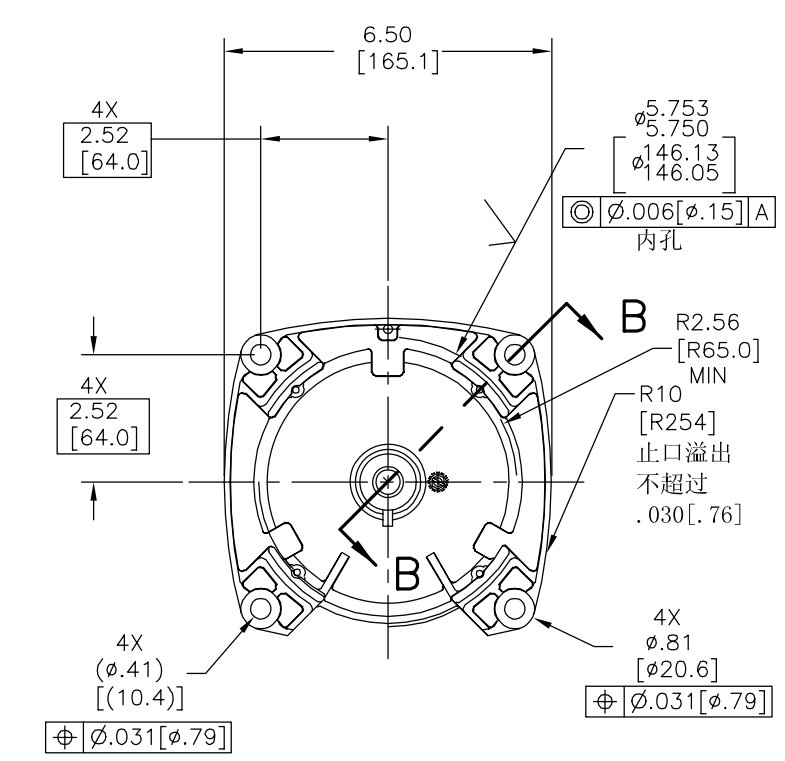
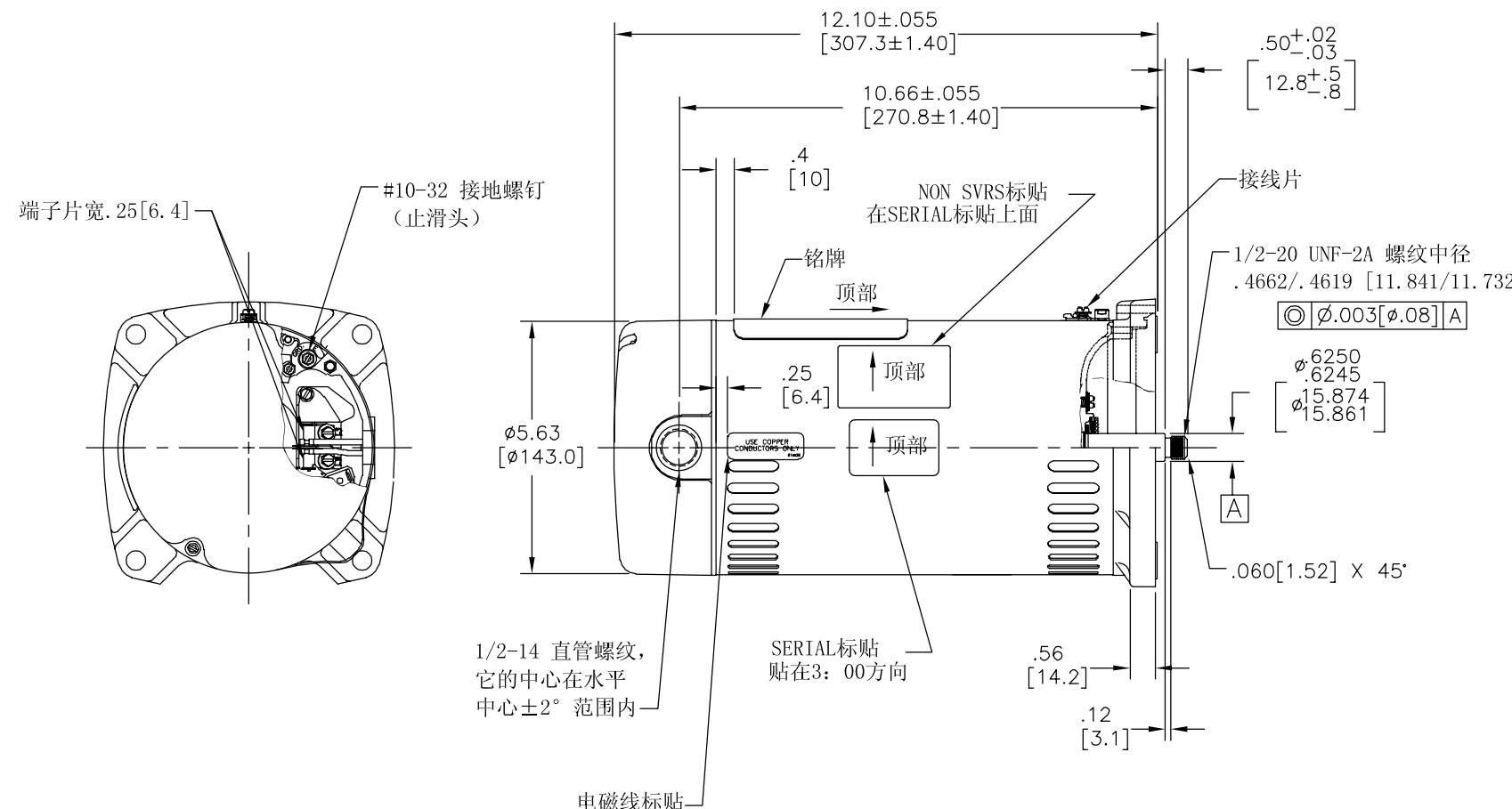
EDS DATE 11-11-2011  
FORMAT REV G

CONFIDENTIAL: THIS DRAWING AND ITS INFORMATION ARE THE EXCLUSIVE AND CONFIDENTIAL PROPERTY OF REGAL-BELOIT CORPORATION AND ARE NOT TO BE DISCLOSED, DUPLICATED, DISTRIBUTED OR OTHERWISE USED WITHOUT THE WRITTEN CONSENT OF REGAL-BELOIT CORPORATION. -ALL RIGHTS RESERVED.

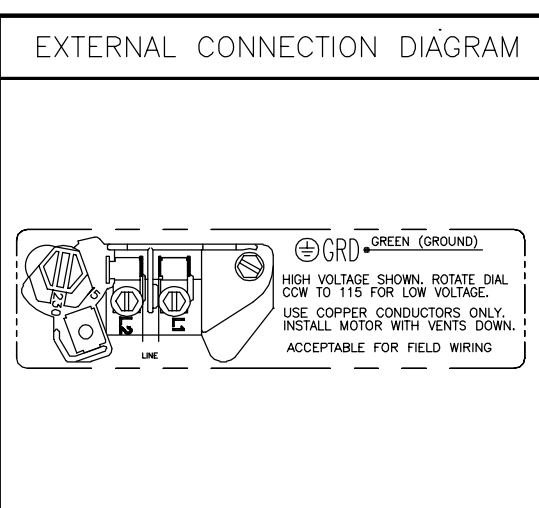
DESCRIPTION	
MODEL-PFHP-48FR OUTLINE	
SIZE C	DWG NO USQ1102
SCALE NONE	SHEET 1



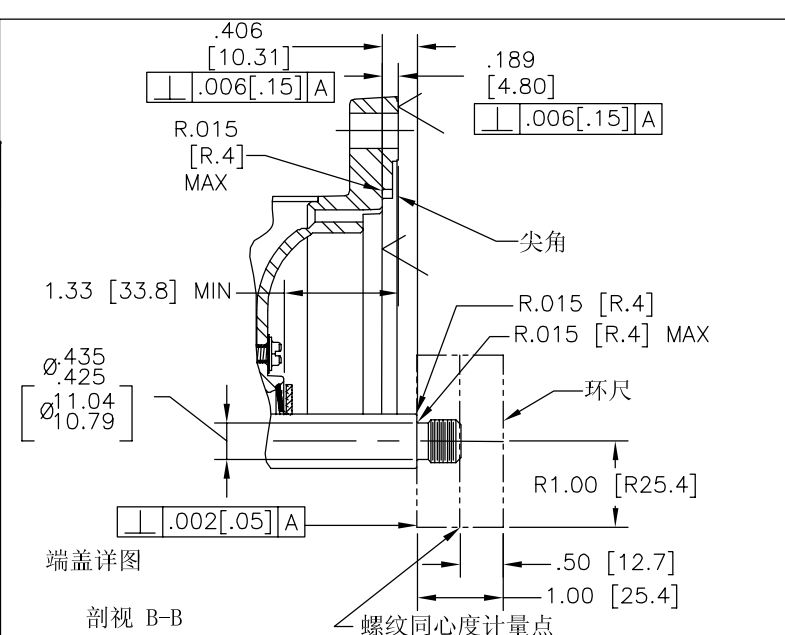
版本	ECO	编制	日期	批准	日期
F	0025584	J.AGUILERA	04-25-2012	R.RASCON	04-25-2012



NAMEPLATE DATA	
MODEL: C48K2PA105C5	
CUST PN: USQ1102	
HP: 1.0	SF: 1.25
ROT: CCWPE	
RPM: 3450	
TYPE: UAC	CODE: K
FORM:	FRAME: 48 Y
VOLTS: 115/230	
AMPS:	
MAX AMPS: 15.3/7.6	
SF AMPS: -	
PH: 1	HZ: 60
INS: B	AMB: 52°C
DUTY: CONT	
ENCLOSURE: ODP	
THERMALLY PROTECTED	



- NOTES
1. 表面处理喷黑漆。
  2. 移去后盖可见.44[11.2]的扁身。
  3. 不锈钢轴伸。
  4. 在轴承室测量的振动值最大震幅=.001[.03]。
  5. 电机接高电压。端子板上包括快速改变电压的插销。
  6. 支撑衬垫需和电机一起包装



PERFORMANCE CURVE	APPROVED SAMPLE		
C48K2W52			
UL COMPONENT	CSA		
FILE#	CCN#	FILE#	GUIDE#
E25022	XEWR2	LR43341	4211-01
CUSTOMER	DISTRIBUTION SERVICES		

形位公差	除另有注明
□ 平面度	尺寸公差如下:
— 直线度	英寸 X XX XXX XXXX
∠ 倾斜度	英寸 ±.1 ±.02 ±.005 ±.0005
⊥ 垂直度	毫米 ±0.5 ±0.13 ±0.013
// 平行度	角度 ±.50 度
○ 圆度	清理毛刺和尖棱
⊘ 圆柱度	英寸 .003-.015 毫米 0.1-0.4
△ 内圆角	英寸 .020 毫米 0.5
∩ 面轮廓度	表面粗糙度
∩ 线轮廓度	英制 125 米制 3.2
↗ 圆跳动	米制尺寸显示在 [ ]
↑ 位置度	
◎ 同轴度	
≡ 对称度	

绘图: JLG	5-12-09
批准:	
第三角投影	图纸格式发布日期 11-11-2011
	图纸格式版本 G
机密: 本图纸及相关信息所有权归REGAL-BELOIT CORPORATION. 未经REGAL-BELOIT CORPORATION书面授权, 不得泄露、复制、传播或作其他用途。—版权所有	

名称	
MODEL-PFHP-48FR	
OUTLINE	
图幅 C	图号 USQ1102
比例 NONE	页号 1

名称	
MODEL-PFHP-48FR	
OUTLINE	
图幅 C	图号 USQ1102
比例 NONE	页号 1