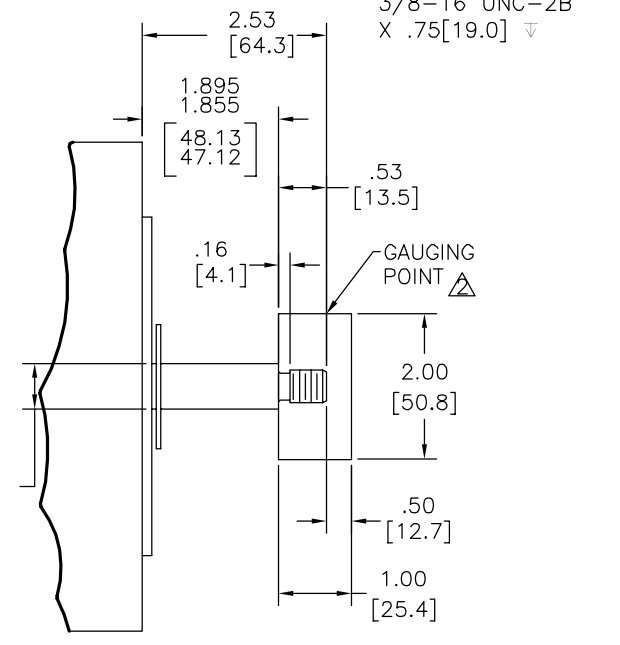
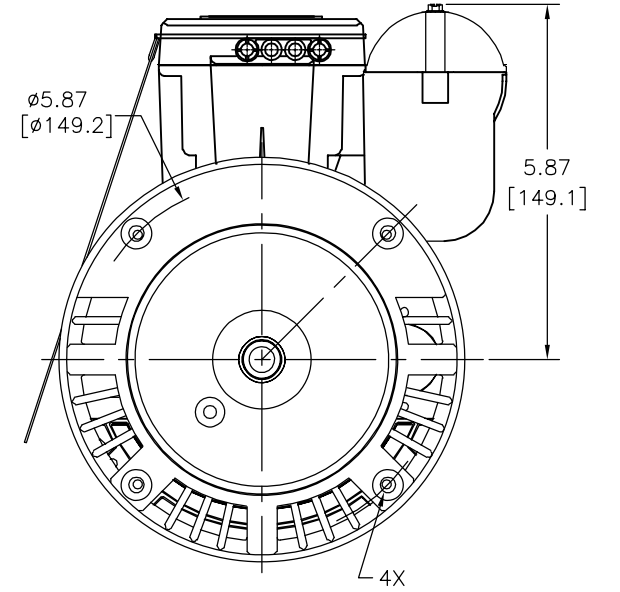
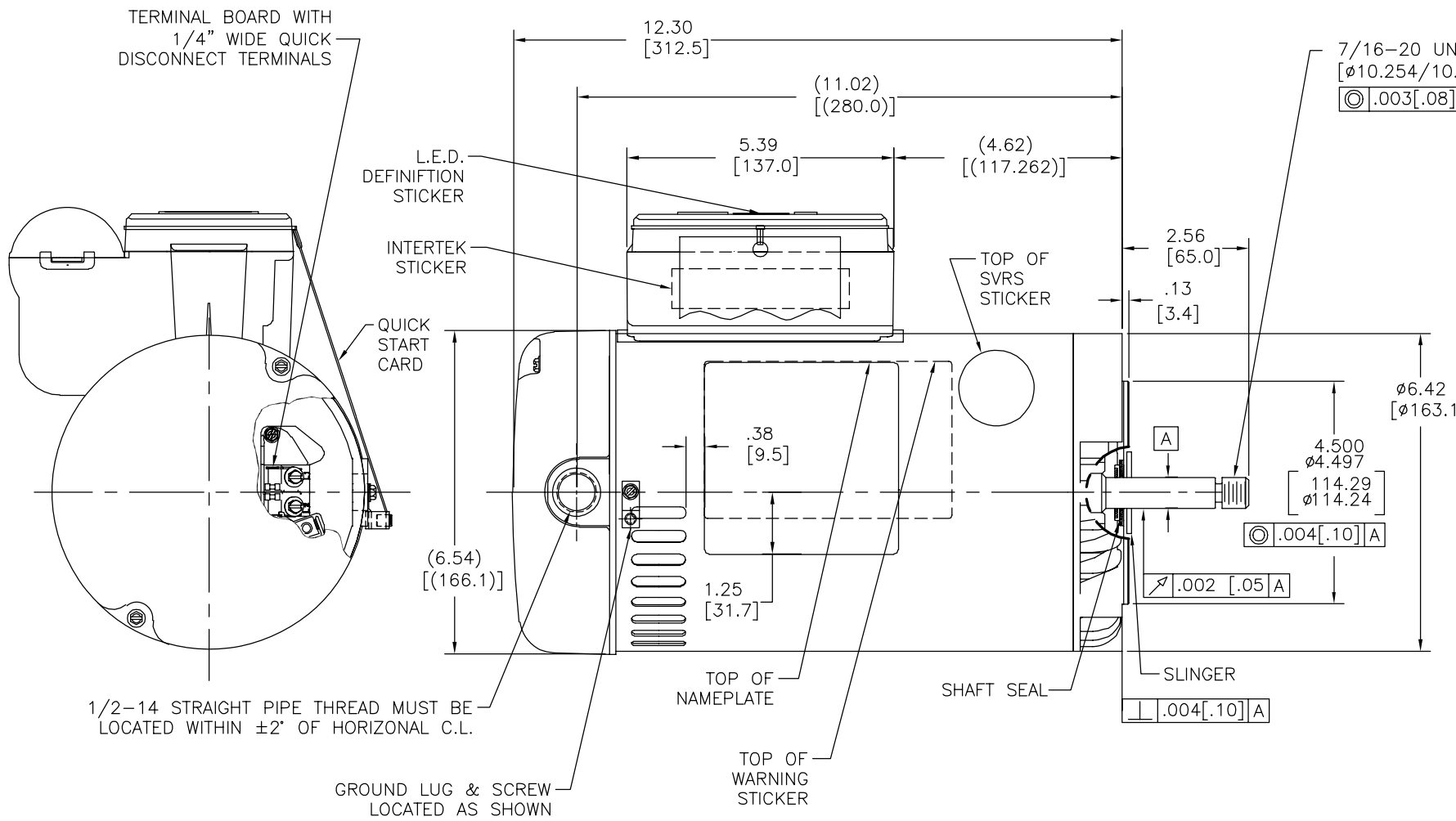


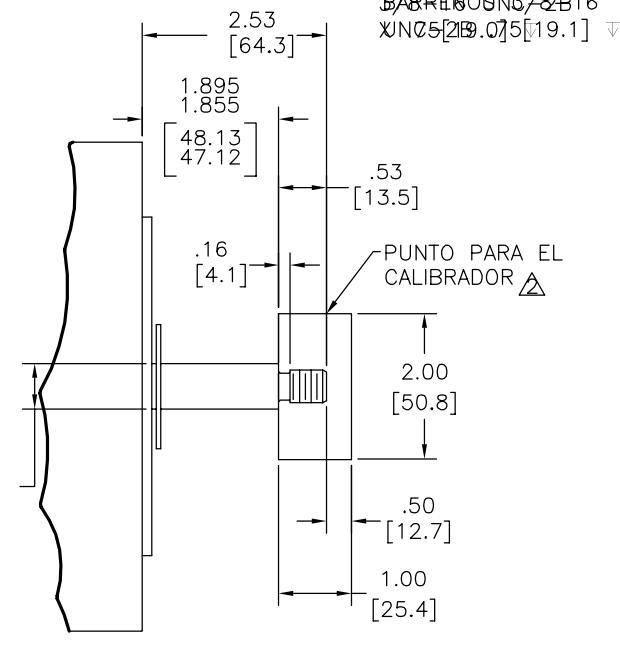
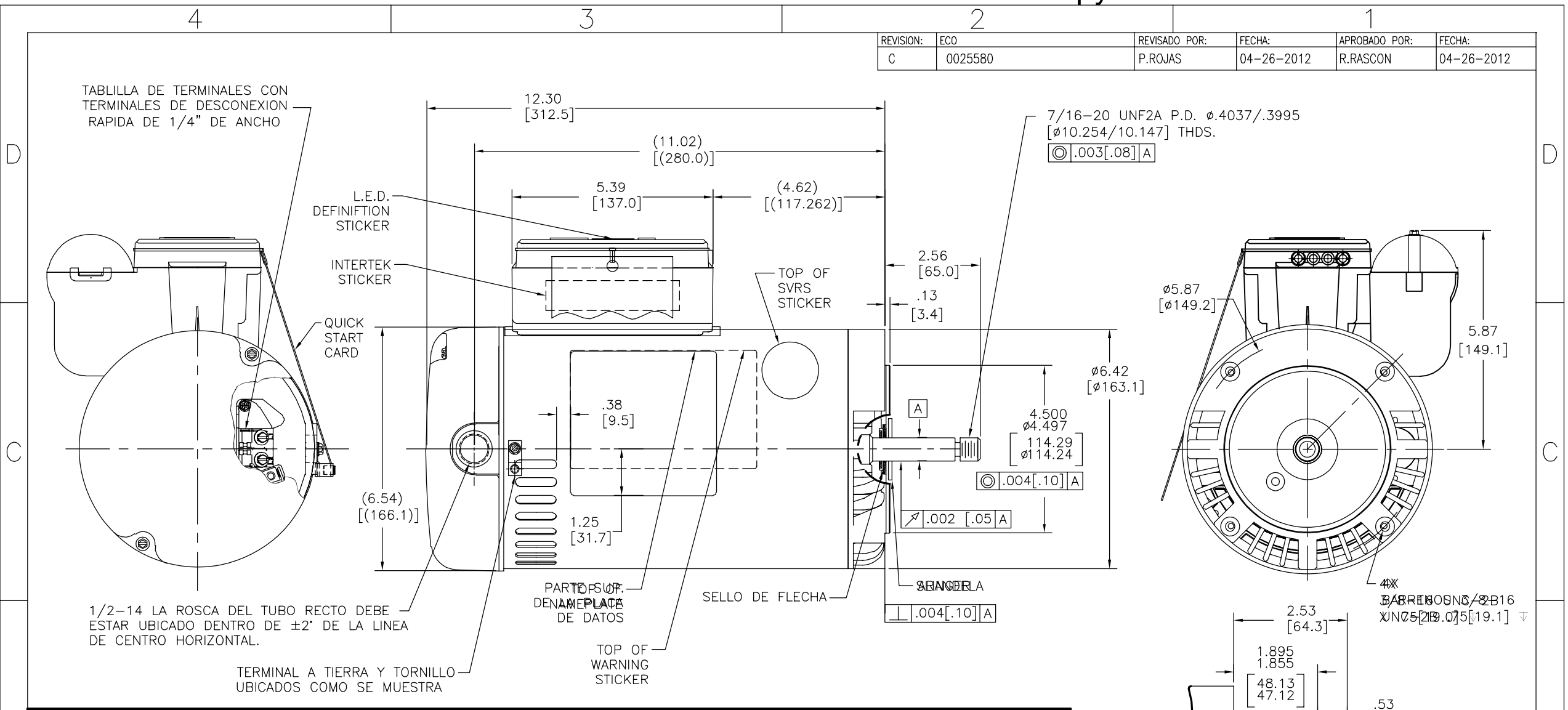
REV	ECO	REV BY	DATE	APPD	DATE
C	0025580	P.ROJAS	04-26-2012	R.RASCON	04-26-2012



NAMEPLATE DATA	EXTERNAL CONNECTION DIAGRAM	NOTES
MODEL: K56AA56A01 CUST PN: STG1302A HP: 3.0 SF: 1.15 ROT: CCWPE RPM: 3450 TYPE: CP CODE: G FORM: PHM FRAME: Y56J VOLTS: 208-230 AMPS: SF15.0-13.3 MAX AMPS: --- SF AMPS: --- PH: 1 HZ: 60 INS: B AMB: 50 DUTY: CONT ENCLOSURE: ODP THERMALLY PROTECTED	<p>GRD GREEN (GROUND)</p> <p>USE COPPER CONDUCTORS ONLY. INSTALL MOTOR WITH VENTS DOWN. ACCEPTABLE FOR FIELD WIRING</p>	1. END PLAY NOT TO EXCEED .010 [.25] MEASURED WITH NO THRUST. ∇ FOR THREADED SHAFT EXT. ECCENTRICITY OF THREADED PORTION OF SHAFT IS HELD WITHIN .004 [.10] TOTAL GAGE READING WITH THE INDICATOR ON O.D. OF GROUND RING GAGE AS SHOWN. THE GAGE BEING STATIONARY WITH RESPECT TO 3. FOR THREADED SHAFT EXT. MATING PARTS SHOULD BE RELIEVED ONE THREAD TO CLEAR FILLET. 4. FINISH PAINT TO BE BLACK LACQUER 5. STAINLES STEEL SHAFT 6. .44 [1.0] WRENCH FLATS ON SHAFT -FOR ACCESS TO THIS WRENCH FLAT REMOVE END COVER.

PERFORMANCE CURVE	APPROVED SAMPLE	GEOMETRIC CHARACTERISTICS & SYMBOLS ▽ FLATNESS - STRAIGHTNESS < ANGLARITY ⊥ PERPENDICULARITY (SQUARENESS) // PARALLELISM ○ ROUNDNESS (CIRCULARITY) ∅ CYLINDRICITY △ PROFILE OF ANY SURFACE ∩ PROFILE OF ANY LINE ↑ RUNOUT ⊕ TRUE POSITION ⊙ CONCENTRICITY = SYMMETRY ASME Y14.5M 1994	DR BY: JHENRY	08-13-09
101101011	-		UNLESS OTHERWISE SPECIFIED DIM. TOLERANCES ARE AS FOLLOWS: INCH X XX XXX XXXX ±.1 ±.02 ±.005 ±.0005 mm ±0.5 ±0.13 ±0.013 ANG. ±50 DEG REMOVE BURRS & BREAK SHARP EDGES: INCH .003-.015 mm 0.1-0.4 CORNER FILLETS TO: INCH .020 mm 0.5 MACHINE SURFACES: INCH \surd mm \surd METRIC DIMS. SHOWN IN [BRACKETS]	APPD:
UL COMPONENT	CSA		THIRD ANGLE PROJECTION	FORMAT REV G
FILE#	CCN#	FILE#	CONFIDENTIAL: THIS DRAWING AND ITS INFORMATION ARE THE EXCLUSIVE AND CONFIDENTIAL PROPERTY OF REGAL-BELOIT CORPORATION AND ARE NOT TO BE DISCLOSED, DUPLICATED, DISTRIBUTED OR OTHERWISE USED WITHOUT THE WRITTEN CONSENT OF REGAL-BELOIT CORPORATION. -ALL RIGHTS RESERVED.	
PENDING	PENDING	PENDING	DESCRIPTION	MODEL-PFHP-56FR OUTLINE
CUSTOMER	DISTRIBUTION		SIZE C	DWG NO STG1302A
			SCALE NONE	SHEET 1

REVISION:	ECO	REVISADO POR:	FECHA:	APROBADO POR:	FECHA:
C	0025580	P.ROJAS	04-26-2012	R.RASCON	04-26-2012



NAMEPLATE DATA	EXTERNAL CONNECTION DIAGRAM	NOTES
MODEL: K56AA56A01 CUST PN: STG1302A HP: 3.0 SF: 1.15 ROT: CCWPE RPM: 3450 TYPE: CP CODE: G FORM: PHM FRAME: Y56J VOLTS: 208-230 AMPS: SF15.0-13.3 MAX AMPS: --- SF AMPS: --- PH: 1 HZ: 60 INS: B AMB: 50 DUTY: CONT ENCLOSURE: ODP THERMALLY PROTECTED	<p>GRD GREEN (GROUND)</p> <p>LINE</p> <p>USE COPPER CONDUCTORS ONLY. INSTALL MOTOR WITH VENTS DOWN. ACCEPTABLE FOR FIELD WIRING</p>	<ol style="list-style-type: none"> JUEGO AXIAL NO DEBE EXCEDER .10[.25] MEDIDO SIN EMPUJE. Δ PARA EXTENSION DE FLECHAS ROSCADAS LA EXCENTRICIDAD DE LA PORCION DEL ROSCADO DE LA FLECHA ESTA SOSTENIDA DENTRO DE .004[.10] LECTURA TOTAL DEL INDICADOR EN EL DIAM. EXT. DE ANILLO DE TIERRA COMO SE MUESTRA. EL INDICADOR EMPIEZA ESTACIONARIO CON RESPECTO A PARA EXTENSION DE FLECHAS ROSCADAS LAS PARTES COINCIDENTES DEBEN ESTAR A UN HILO DE LA ROSCA PARA DESPEJAR DEL FILO. ACABADO DE PINTURA DEBE SER DE NEGRO LACQUER. FLECHA DE ACERO INOXIDABLE. .44[11.2] LLAVE PLANA EN LA FLECHA- PARA EL ACCESO A ESTA LLAVE PLANA REMUEVA LA CUBIERTA.

PERFORMANCE CURVE	APPROVED SAMPLE	CARACTERISTICAS DE GEOMETRIA Y SIMBOLOS Z PLANICIDAD - RECTITUD < ANGULARIDAD PERPENDICULARIDAD (A ESCUADRA) // PARALELISMO O REDONDEZ (CIRCULARIDAD) R CILINDRICIDAD ^ PERFIL DE CUALQUIER SUPERFICIE ~ PERFIL DE CUALQUIER LINEA / VARIACION + POSICION REAL @ CONCENTRICIDAD = SIMETRIA	A MENOS QUE SE ESPECIFIQUE DE OTRA MANERA, LAS TOLERANCIAS DE LAS DIMS; SON LAS SIGUIENTES: PULG ±.1 ±.02 ±.005 ±.0005 mm ±0.5 ±0.13 ±0.013 ANG. ±.50 GRADOS ELIMINAR REBABAS Y ORILLAS FILOSAS DEL BORDE. PULG .003-.015 mm 0.1-0.4 FILETEAR ESQUINA: PULG .020 mm 0.5 MAQUINAR SUPERFICIES PULG 125 mm 3.2	DIBUJADO POR: JHENRY	08-13-09
101101011	-			APROBADO POR:	
UL COMPONENT	CSA			TERCER ANGULO DE PROYECCION	FECHA EDS: 11-11-2011
FILE#	CCN#	FILE#	GUIDE#		REV. FORMATO: G
PENDING	PENDING	PENDING	PENDING		
CUSTOMER	DISTRIBUTION				

DESCRIPCION: MODEL-PFHP-56FR OUTLINE	
TAMAÑO: C	NUMERO DE DIBUJO: STG1302A
ESCALA: NONE	HOJA: 1

4

3

2

1

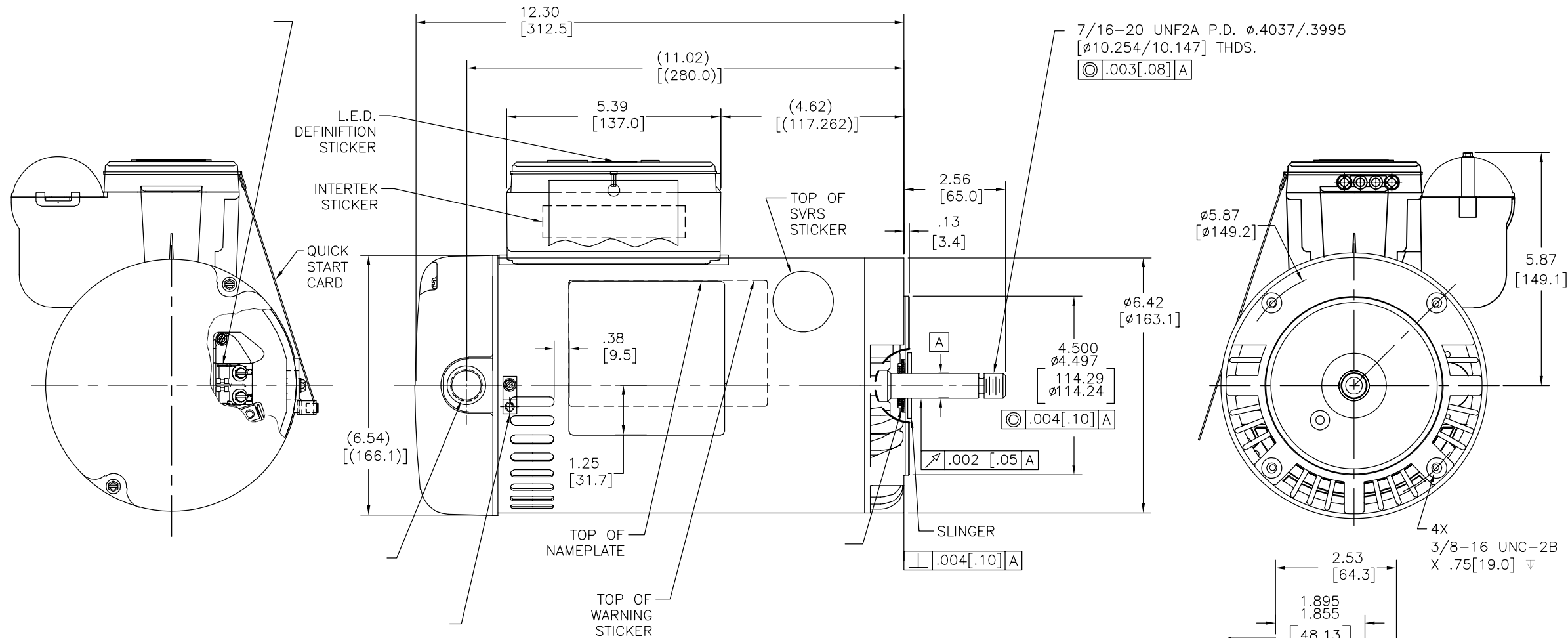
4

3

2

1

版本	ECO	编制	日期	批准	日期
C	0025580	P.ROJAS	04-26-2012	R.RASCON	04-26-2012



NAMEPLATE DATA	EXTERNAL CONNECTION DIAGRAM	NOTES
MODEL: K56AA56A01 CUST PN: STG1302A HP: 3.0 SF: 1.15 ROT: CCWPE RPM: 3450 TYPE: CP CODE: G FORM: PHM FRAME: Y56J VOLTS: 208-230 AMPS: SF15.0-13.3 MAX AMPS: --- SF AMPS: --- PH: 1 HZ: 60 INS: B AMB: 50 DUTY: CONT ENCLOSURE: ODP THERMALLY PROTECTED		

PERFORMANCE CURVE	APPROVED SAMPLE	形位公差 □ 平面度 〱 直线度 〳 倾斜度 ⊥ 垂直度 ∥ 平行度 ○ 圆度 ⊙ 圆柱度 面轮廓度 线轮廓度 圆跳动 ⊕ 位置度 ⊙ 同轴度 ≡ 对称度	除另有注明 尺寸公差如下: 英寸 X XX XXX XXXX 毫米 ±.1 ±.02 ±.005 ±.0005 毫米 ±0.5 ±0.13 ±0.013 角度 ±.50 度 清理毛刺和尖棱 英寸 .003-.015 毫米 0.1-0.4 内圆角 英寸 .020 毫米 0.5 表面粗糙度 英制 125 米制 3.2 米制尺寸显示在 []	绘图: JHENRY	08-13-09	REGAL-BELOIT CORPORATION MODEL-PFHP-56FR OUTLINE 图幅 C 图号 STG1302A 比例 NONE 页号 1
101101011	-			批准:	图格式发布日期 11-11-2011	
UL COMPONENT	CSA			第三角投影	图格式版本 G	
FILE# CCN# FILE# GUIDE#				机密: 本图纸及相关信息所有权归REGAL-BELOIT CORPORATION 未经REGAL-BELOIT CORPORATION书面授权, 不得泄露、 复制、传播或作其他用途。--版权所有		
PENDING PENDING PENDING PENDING						
CUSTOMER	DISTRIBUTION					

ASME Y14.5M 1994