



INSTALLATION INSTRUCTIONS

SAVI MELODY

NICHELESS, INTELLIGENT COLOR LED LIGHTING

LIMITED WARRANTY

Nexxus Lighting, Inc. warrants its products, excluding lamps, to be free from defects in material and/or workmanship, under normal condition, use and service, for a period of two (2) years from the original invoice date (Five (5) Years for Red, Amber and Orange FlexLED and Border Light LED products and one (1) Year for Non-UL Listed Power Supplies). If proof of purchase is provided, Nexxus Lighting will warranty the product for two (2) years from date of the purchase (Five (5) Years for Red, Amber and Orange FlexLED and Border Light products and one (1) Year for Non-UL Listed Power Supplies).

TERMS AND CONDITIONS:

This warranty only applies when Nexxus Lighting products are properly wired and installed together as a system; and operated within the electrical values shown on the Nexxus Lighting specification sheets; used in lighting equipment designed and approved for the application and environmental conditions (temperature, humidity) within the normal specified operating range of the system. This warranty does not apply to any abnormal use in violation of any applicable standard, code or instructions for use in installations including those contained in the latest National Electrical Code (NEC), the Standards for Safety of Underwriters Laboratory, Inc. (UL), Standards for the American National Standards Institute (ANSI), in Canada, the Canadian Standards Association (CSA), Europe (CE), Australia (C-Tick). This warranty will not apply in the event of conditions demonstrating abnormal use or stress, including under over voltage conditions, excessive switching cycles, excessive operating hours, alterations, accident, theft, misuse, abuse and damaged caused by negligent installation, improper maintenance or where adequate care has not been taken to prevent damage to the lighting system. Replacement of Nexxus Lighting components with any other manufacturer will void the entire warranty.

WARRANTY SERVICE CLAIMS:

Nexxus Lighting must issue a Return Material Authorization (RMA) number for all requests for warranty review. To expedite service, please contact Nexxus Lighting Customer Representative: 407-857-9900. If you are unsure whether a situation exists that is covered by this warranty, please contact Nexxus Lighting Customer Service for assistance. In the event of a defect in material or workmanship during the warranty period, Nexxus Lighting will repair or replace (at its own discretion) its products under the conditions of the warranty.

RETURN OF DEFECTIVE PRODUCT:

After contacting Nexxus Lighting, Inc. and receiving the RMA#, the purchaser / user shall promptly return the product after receiving instructions regarding if, when and where to ship product. Product must be returned within 30 days of receiving RMA#. Shipping box must be clearly marked with RMA#. Failure to follow this procedure shall void this warranty. Nexxus Lighting will cover expenses for material but will not cover shipping costs. Products returned without an RMA# will be refused and returned to sender at the sender's expense.

REPLACEMENT OF PRODUCT, LIMITS OF LIABILITY:

The foregoing shall constitute the exclusive remedy of the purchaser and the sole liability of Nexxus Lighting, Inc. regarding its products and component warranty. **NO WARRANTY OF MERCHANTABILITY OR FITNESS FOR A PARTICULAR PURPOSE IS MADE OR IS TO BE IMPLIED.** In no event shall Nexxus Lighting, Inc. be liable for any other costs or damages including labor charges, lost profits or revenues, incidental, special or consequential damages. Total liability shall not exceed the total extended purchase price for the product. Nexxus Lighting, Inc. reserves the right to examine all failed Nexxus Lighting, Inc. products and components to determine the cause of failure and patterns of usage and reserves the right to be the sole judge as to whether any product or component is defective and covered under this warranty.

12 VOLT

Requires the use of a UL Listed class 3 12VAC transformer



14 WATTS

1.2 AMPS

MODEL NUMBERS

SAVI-MELODY100 (100 ft. cord)
SAVI-MELODY150 (150 ft. cord)



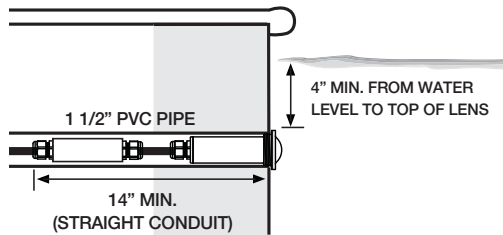
READ AND FOLLOW ALL INSTRUCTIONS CAREFULLY

SAFETY PRECAUTIONS

⚠ CAUTION

1. The SAVI Melody is a low voltage LED luminaire and should never be electrically connected to any power source other than an approved pool “safety rated” 12VAC transformer. Failure to comply will either damage or destroy the SAVI Melody and void the warranty.
2. There are no user serviceable components in the SAVI Melody.

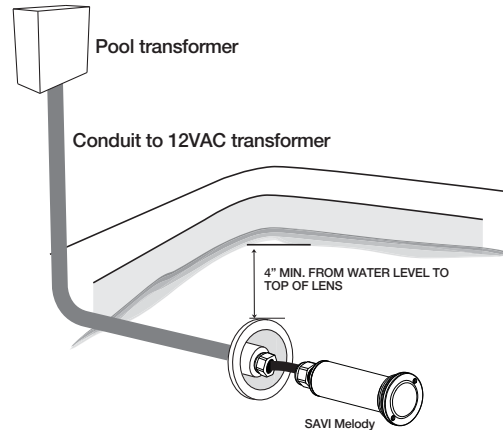
INSTALLATION INSTRUCTIONS



STEP 1

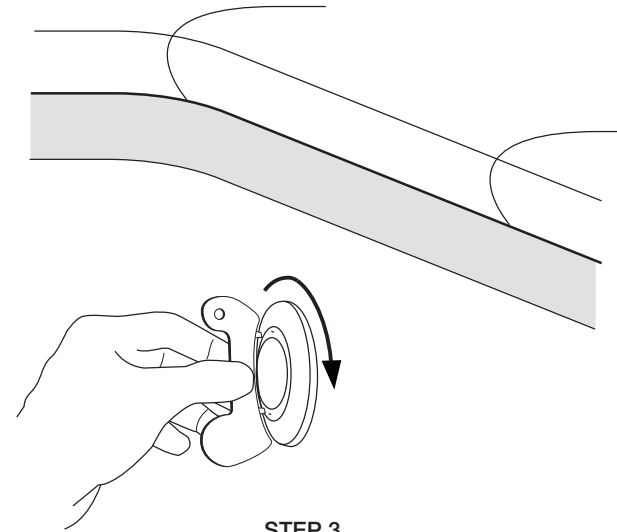
The light fixture must be installed in or on a wall of the pool (or water feature) with the top of the lens opening not less than 4 inches (10.16cm) below the normal water level of the pool except when the fixture is installed in an area of the swimming pool that is not used for swimming and the lens is adequately guarded.

(Note: requires use of 1 1/2" wall fittings)



STEP 2

Snake the 2-conductor electric cord through the conduit outlet of the wall fitting, into the conduit and up to the location of the 12VAC pool transformer. Cut off extra cord after, allowing for service and length of run to the transformer. Pull the fixture snug to the wall fitting.



STEP 3

Using the lens wrench (part # 13.6151), thread the fixture into the wall fitting until it is snug.

STEP 4


Prepare the end of the power cable and install to the 12VAC output wires of an approved pool “safety rated” transformer. Allow up to 1.2 amps of transformer output current per installed Melody†. No separate ground or bonding wire is required for the Melody (low voltage with no exposed metal) along with not requiring a niche.

STEP 5

Please make sure that all protective coverings have been removed.

† An example of an approved pool transformer would be the PX-100 or PX-300 model from Intermatic. Maximum of seven (7) SAVI Melodies per PX-100 or twenty-one (21) SAVI Melodies per PX-300.

NOTE: SAVI Melody's can be used with any UL Listed outdoor rated, class 3, 12 VAC transformer so long as the wattage and amperage of the transformer equals the total max wattage and amperage in use. Also, Savi Melody can be used with any UL Recognized class 3, 12 VAC transformer so long as the use of the transformer meets the appropriate application requirements of that transformer and meets or exceeds the total max wattage and amperage in use.

 Nexus Lighting patents pending. This product is covered by one or more of the following patents: 6,971,760. Features officially licensed technology from Color Kinetics; patent numbers 6.016.038, 6.150.774