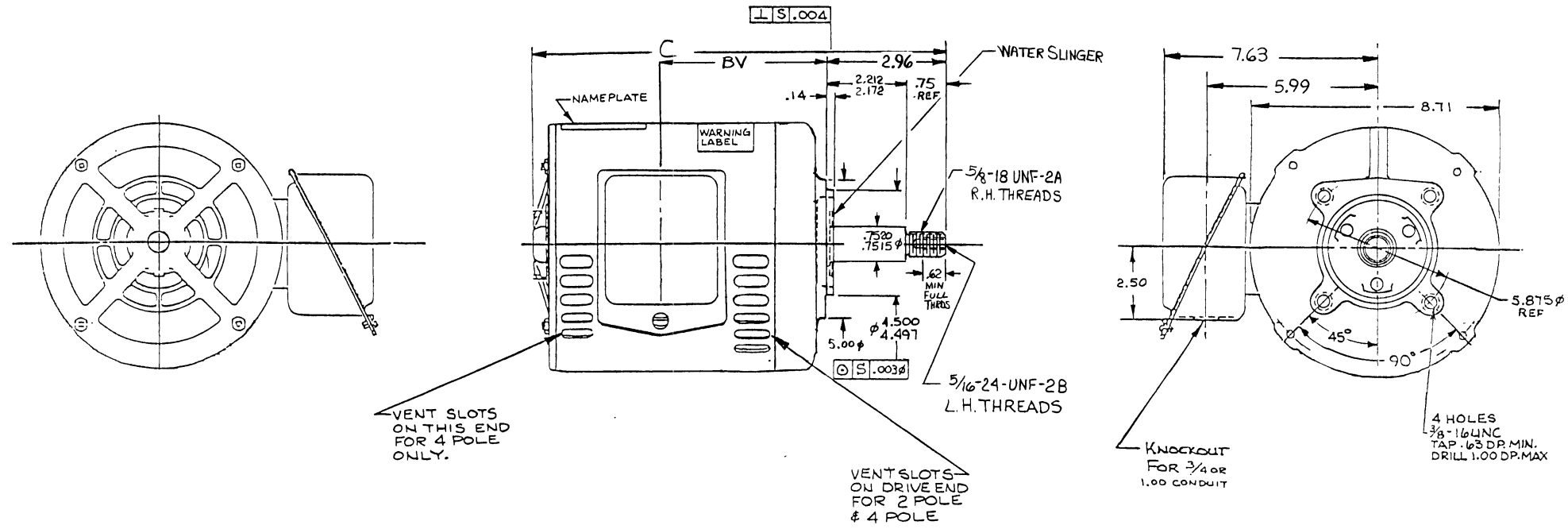


DO NOT SCALE DRAWING

| P/S | GRP NO | REFERENCE | | | C | BV |
|-----|--------|-----------|------------|------|-------|------|
| | | TYPE | FRAME SIZE | FORM | | |
| 4 | 01 | SC | H182TY | S | 15.58 | 6.88 |
| 4 | 02 | C | ER2TY | S | 15.08 | 6.63 |

NOTES:
 1) FINISHED MOTOR CANNOT BE CONVERTED FROM F1 TO F2 ASSEMBLY.
 2) WHEN TERMINAL BOX IS FURNISHED ON RIGHT OR LEFT SIDE DIMENSIONS WILL BE AS SHOWN.



REF 359553

SPEC 59157

∅ = DIA

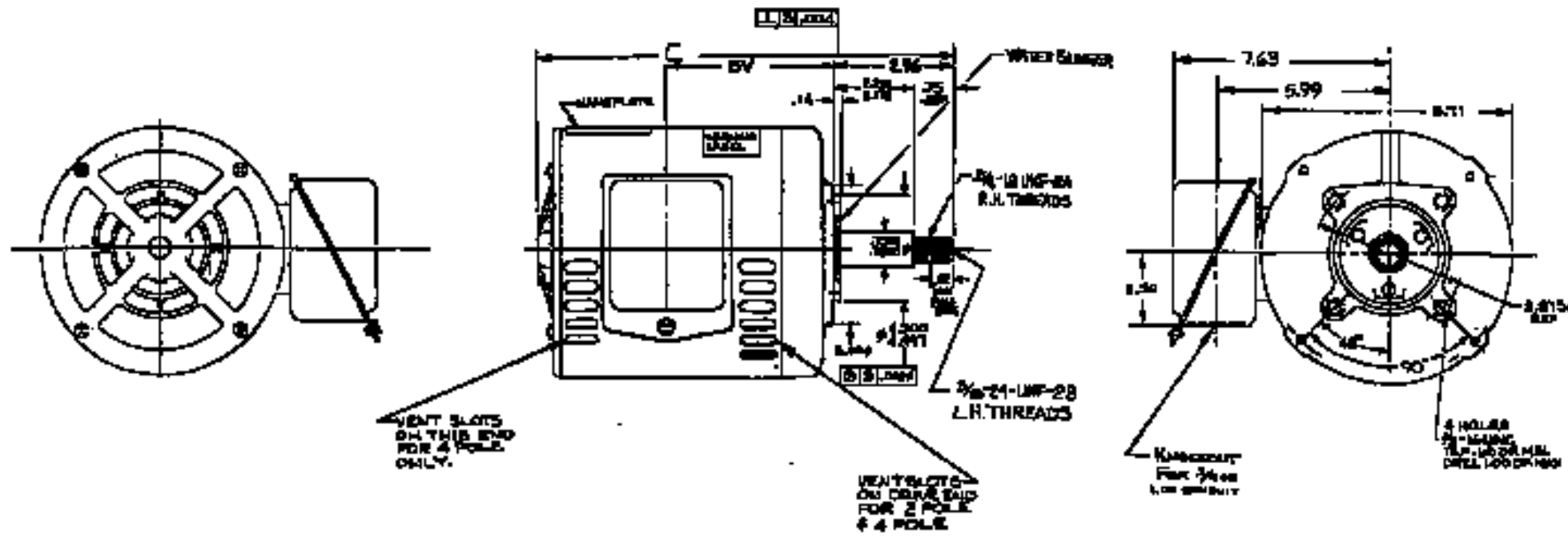
| REVISIONS | DATE | BY | DESCRIPTION |
|-----------|---------|-----|-------------|
| 1 | 6-30-34 | 00 | 1 |
| 2 | 7-1-34 | WPH | 7-1-34 |

| | | |
|---------------------------------|--|------------------|
| THIRD ANGLE PROJECTION | Century Electric, Inc 1831 Chestnut Street, St. Louis, Missouri 63106 | CENTURY |
| TITLE 180T DWG O-UNE BB OPEN | | |
| DRN 4-19-90 | CKD JJR 4-19-90 | CONT CODE 5 |
| APPD | SCALE | DRG NO 363159 |
| | | SIZE C |
| | | CLASS NO 1920 |

ALL DIMENSIONS IN INCHES UNLESS OTHERWISE SPECIFIED

| QTY | GRN NO | REFERENCE | | | C | BV |
|-----|--------|-----------|--------|-----|-------|------|
| | | TYPE | FORM | REV | | |
| 4 | 01 | SC | 118277 | 5 | 15.50 | 4.68 |
| 4 | 22 | 6 | 118277 | 3 | 11.60 | 4.68 |
| | | | | | | |

NOTES:
 1) FINISHED MOTOR CANNOT BE CONVERTED FROM FI TO F2 ASSEMBLY.
 2) WHEN TERMINAL BOX IS FURNISHED ON RIGHT OR LEFT SIDE DIMENSIONS WILL BE AS SHOWN.



REF 359553

SPEC 59157

D=DA

REVISIONS
 1. 11-20-54-00
 2. 11-20-54-00
 3. 11-20-54-00
 4. 11-20-54-00
 5. 11-20-54-00

| | | | |
|---|--------------------------|----|---------|
| THIS DRAWING IS THE PROPERTY OF GENERAL ELECTRIC COMPANY | © GEORV | | |
| | 1 BOT DWG O-LINE 88 OPEN | | |
| REV | DATE | BY | CHKD BY |
| 5 | | | |
| 363159 | | | c P20 |