

Aboveground Systems Mounting Base Installation Instructions

Kit Contents

- AG systems mounting base (“the system base”) — (Qty 1)
- 10-24 threaded brass insert — (Qty 2)
- Screw, 10-24 x 2 inch — (Qty 2)
- Washer, 10 x 7/16 — (Qty 2)
- 1/4-20 threaded brass insert — (Qty 2)
- Screw, 1/4-20 x 1-1/2 inch — (Qty 2)
- Washer, 1/4 x 5/8— (Qty 2)
- Christmas tree pin — (Qty 2)

Note: The 10-24 hardware is smaller than 1/4-20 hardware.



WARNING — Always disconnect power to the pool pump at the circuit breaker before servicing the pump. Failure to do so could result in death or serious injury to serviceman, pool users or others due to electric shock.



Read all servicing instructions before working on the pump.



WARNING — DO NOT open the strainer pot if pump fails to prime or if pump has been operating without water in the strainer pot. Pumps operated in these circumstances may experience a build up of vapor pressure and may contain scalding hot water. Opening the pump may cause serious personal injury. In order to avoid the possibility of personal injury, make sure the suction and discharge valves are open and strainer pot temperature is cool to touch, then open with extreme caution.

Technical support

Sanford, North Carolina (8 A.M. to 5 P.M. - ET)

Moorpark, California (8 A.M. to 5 P.M. - PT)

Phone: (800) 831-7133

Fax: (800) 284-4151

Web sites: www.pentairpool.com - www.staritepool.com

710042(Rev A) 2/1/2008



Pentair Water
Pool and Spa®

Introduction

The aboveground system mounting base installation kit contains everything you need to configure and position select Pentair aboveground pool pump/filter systems on a level area intended for use as the equipment pad for the pool.

Installation

⚠ WARNING! Risk of electrical shock or electrocution.

1. Make sure all electrical breakers and switches to the pump are turned off, and disconnect the communication cable from the pump before installing the base.

Seat the pump

1. Orient the pump so that the pump strainer pot faces in the direction of the arrow in Figure 1.

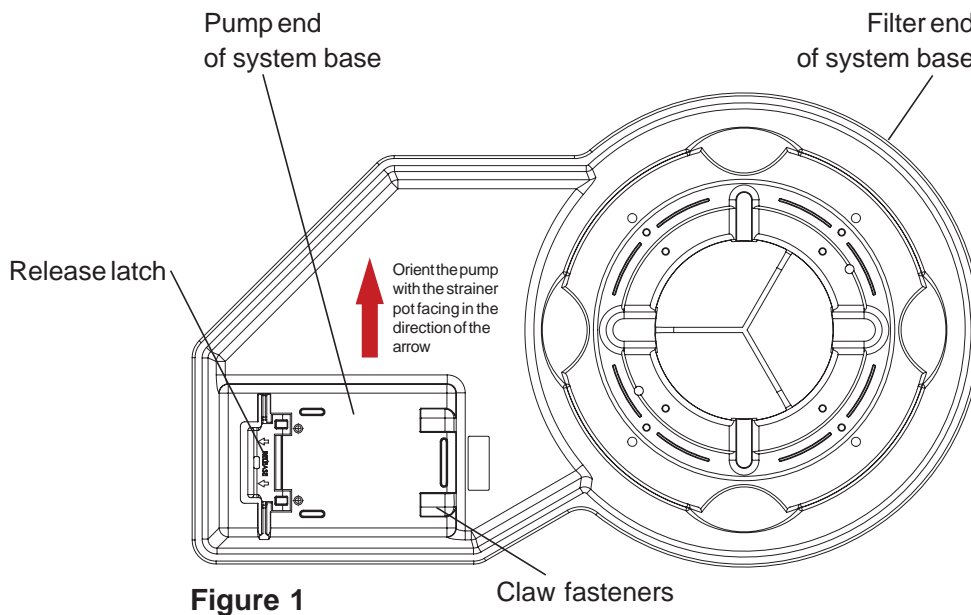


Figure 1

2. Slide the pump foot between the claw fasteners and the release latch (Figure 2). Seat the pump by pushing down on it until the release latch clicks into place on the pump foot (Figure 3).

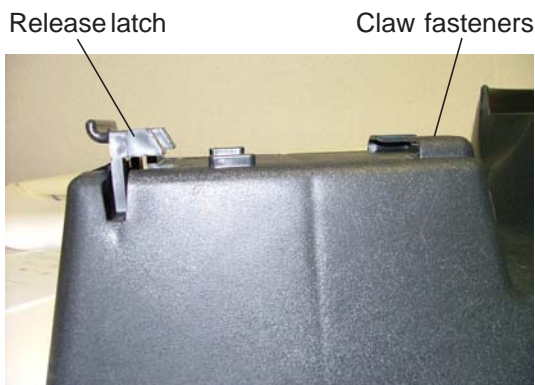


Figure 2

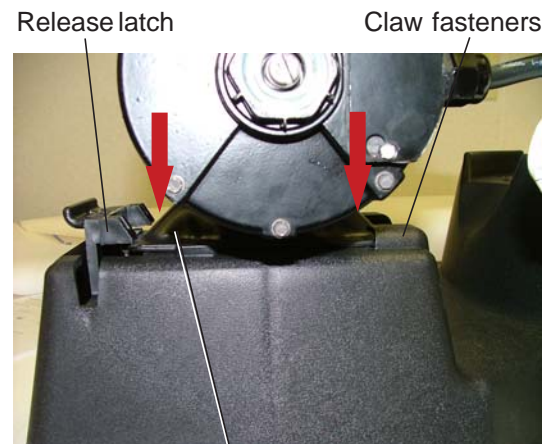


Figure 3 Pump foot

Seat the filter tank foot

1. Place the filter tank foot on the filter end of the system base (Figure 4).

Filter end of system base



Figure 4

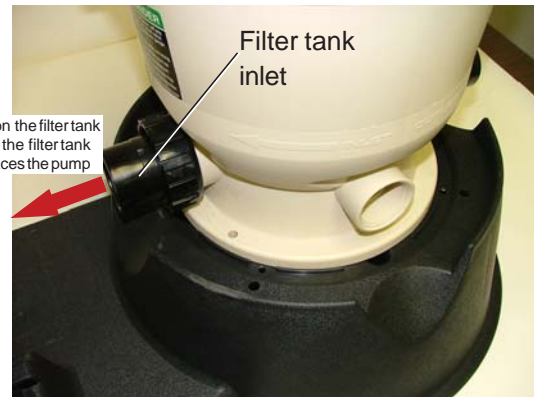


Figure 5

2. Position the filter tank foot so that the filter tank inlet faces the pump end of the system base (Figure 5).

Secure the filter tank foot

The system base provides screw holes to align with the screw holes* in the foot of the filter tank. The system base supports the following filter models: PLM, PLD, PXC, PRC, PRD, Clean & Clear®, Warrior® (Figure 6).

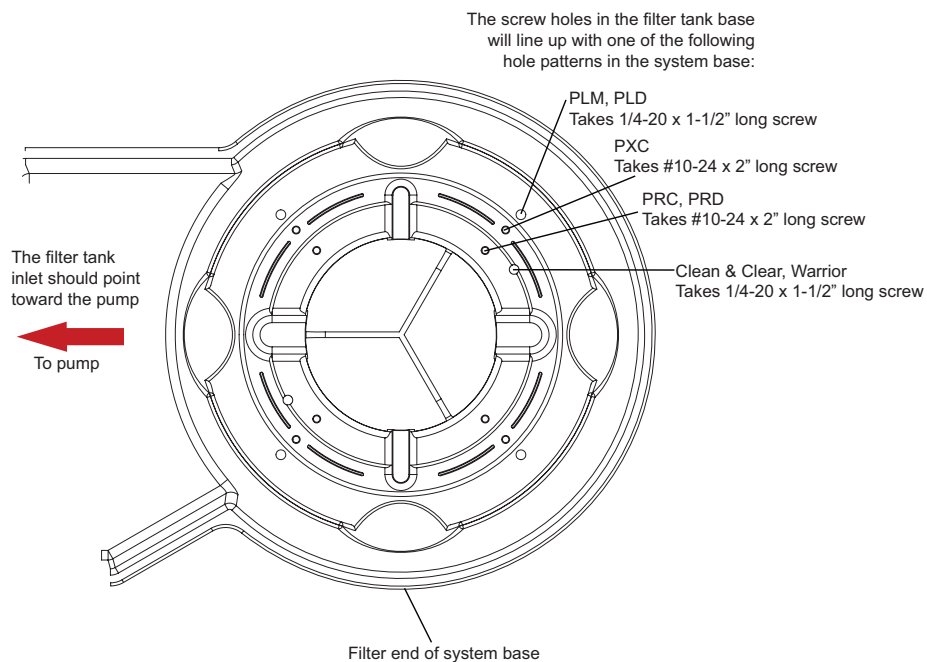


Figure 6

* Filter tanks for sand systems neither use nor require screw holes.

Secure the filter tank foot (continued)

1. With the filter tank inlet aligned toward the pump, identify which screw holes in the system base align with the screw holes in the filter tank foot (Figure 7).

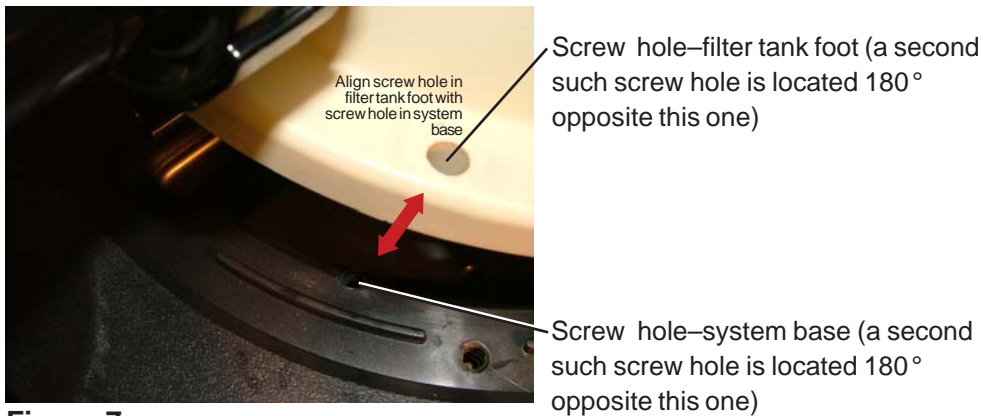


Figure 7

2. Refer to Figure 6 on the previous page, and to the table below to determine the correct washer/screw/threaded brass insert set for the hole pattern. **Note:** Each filter model will use *either* the 1/4-20 or the 10-24 hardware—never both.

<u>Filter model</u>	<u>Screw</u>	<u>Brass Insert</u>	<u>Washer</u>
PLM, PLD	1/4-20 x 1-1/2" Long	1/4-20	1/4 x 5/8
PXC	#10-24 x 2" Long	10-24	10 x 7/16
PRC, PRD	#10-24 x 2" Long	10-24	10 x 7/16
Clean & Clear, Warrior	1/4-20 x 1-1/2" Long	1/4-20	1/4 x 5/8

3. Remove the filter tank base from the system base.

For the 1/4-20 x 1-1/2" screw, the 1/4-20 brass insert, and the 1/4 x 5/8 washer

4. Hand seat the 1/4-20 brass insert into the appropriate screw hole in the system base (Figure 8)



Figure 8



Figure 9

5. Using a flat-head screw driver, drive the 1/4-20 brass insert into the hole in the system base. The blade of the screw driver must be wide enough to catch both slots in the end of the insert (Figure 9).

6. The top of the brass insert should be flush with the system base (Figure 10).



Figure 10

Both brass inserts in place

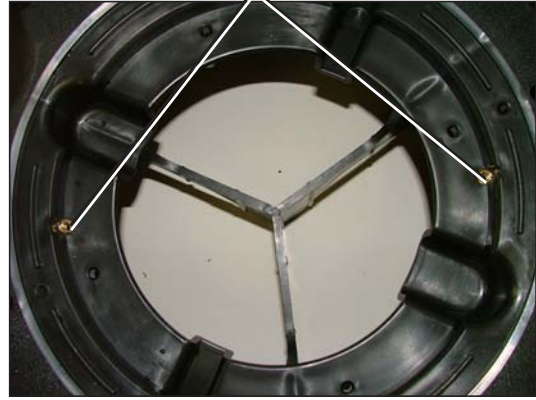


Figure 11

7. Repeat steps 4 through 6 for the screw hole located 180° from the already installed brass insert (Figure 11).
8. Place the filter tank foot on the filter end of the system base and align the two screw holes in the tank foot with the two holes in the system base that now contain the brass inserts.



Figure 12

9. Install a screw and washer through one of the screw holes in the tank foot. Tighten the screw into the brass insert in the system base (Figure 12). Repeat with the other hole located 180° opposite the first one.

For the #10-24 x 2" screw, the 10-24 brass insert, and the 10 x 7/16 washer

4. Place a #10-24 x 2" screw through a 10-24 brass insert and insert the screw and insert into the appropriate screw hole in the system base (Figure 13).



Figure 13



Figure 14

5. Using a Phillips head screwdriver, drive the screw into the hole in the system base until the top of the brass insert is flush with the system base (Figure 14).



Figure 15



Figure 16

6. Back the screw out, leaving the brass insert imbedded in the system base (Figure 15).
7. Repeat steps 4 through 6 for the screw hole located 180° from the already installed brass insert (Figure 16).
8. Place the filter tank foot on the filter end of the system base and align the two screw holes in the tank foot with the two holes in the system base that now contain the brass inserts.

9. Install a screw and washer through one of the screw holes in the tank foot. Tighten the screw into the brass insert in the system base (Figure 17). Repeat with the other hole located 180° opposite the first one.



Figure 17

Secure the pump

1. Complete the pump/filter connection by connecting the plumbing between the pump volute and the filter inlet.
2. Secure the pump foot to the system base by inserting Christmas tree pins through the slots in the pump foot into the two corresponding holes in the system base next to the release latch (Figure 18). Push down on the Christmas tree pins until they are flush with the slots in the pump foot (Figure 19).



Figure 18 Release latch



Figure 19 Christmas tree pins flush with system base

Removal

⚠ WARNING! Risk of electrical shock or electrocution.

1. Make sure all electrical breakers and switches to the pump are turned off, and disconnect the communication cable from the pump before removing the system base.

Remove the pump

1. Disconnect the pump/filter connection.
2. Press the release latch and pull upward on the rear of the pump motor assembly.
3. Rock the rear of the pump motor assembly up and down until the Christmas tree pins pull free of the system base.
4. Lift the pump off the system base.



© 2008 Pentair Water Pool and Spa, Inc. All rights reserved.

This document is subject to change without notice.

1620 Hawkins Ave., Sanford, NC 27330 • (919) 566-8000

10951 West Los Angeles Ave., Moorpark, CA 93021 • (805) 553-5000

Trademarks and Disclaimers:

PLM™, PLD™, PXC™, PRC™, PRD™, Clean and Clear®, Warrior® and Pentair Water Pool and Spa® are trademarks and/or registered trademarks of Pentair Water Pool and Spa, Inc. and/or its affiliated companies in the United States and/or other countries. Unless noted, names and brands of others that may be used in this document are not used to indicate an affiliation or endorsement between the proprietors of these names and brands and Pentair Water Pool and Spa, Inc. Those names and brands may be the trademarks or registered trademarks of those parties or others.

Printed in U.S.A.

710042 (Rev A)