



Super Pump® VS

VARIABLE-SPEED PUMP SERIES

PUMPS



Energy Savings You Control

Hayward®'s best selling Super Pump just got even better! The new variable-speed Super Pump VS takes efficiency to the next level with up to 80% energy cost savings over traditional single-speed pumps. Featuring an integrated variable-speed drive and a totally-enclosed, permanent magnet motor for even greater reliability and energy efficiency, Super Pump VS offers complete control for in-ground pools and spas.



Upgrade to Super Pump VS and save energy...and money!



Integrated, Programmable Interface
 Customize speed, duration, and priming time while monitoring power consumption.



The digital interface shows power consumption for immediate feedback to maximize energy savings.

Exclusive, Swing-Away Hand Knobs

Allow easy strainer cover removal without tools.

110 Cubic-Inch Basket

Extra leaf-holding capacity.

See-Through Strainer Cover

Easy to see when the basket requires cleaning.

Self-Priming Capability

Suction lift up to 10' above water level.



Advanced Motor Design
 Permanent magnet, totally-enclosed fan cooled (TEFC) design provides incredible energy efficiency and reliability.

Incredibly quiet operation, especially at energy-saving, lower speeds.

Super Pump® VS

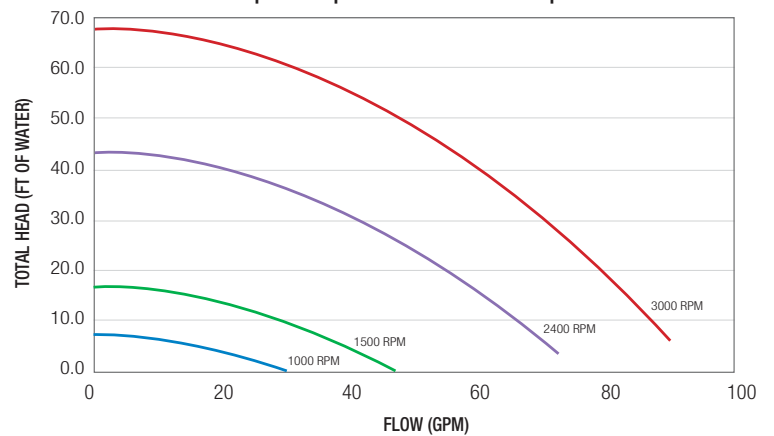
Variable-speed pumps are the ultimate way to save energy while enjoying your pool. Most other variable-speed models, however, are oversized when compared to medium-head pumps such as Hayward®'s Super Pump. The all-new Super Pump VS is right-sized, particularly for applications with 1.5" plumbing, providing tremendous energy savings that result in an even faster return on your investment.

The digital interface shows power consumption for immediate feedback to maximize energy savings.

Super Pump VS provides customizable speed, duration, and priming time to match the needs of both aftermarket and new construction installations. Programmable timers and a permanent magnet motor mean this pump meets the requirements of swimming pool efficiency standards such as Title 20 and APSP-15.

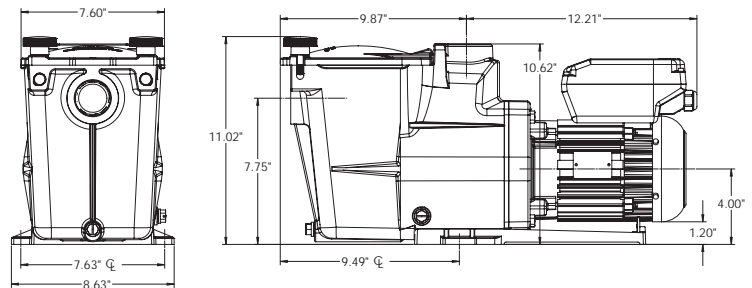
Upgrade and save with Super Pump VS!

Super Pump VS Performance Comparison



SUPER PUMP VS PUMP BUYING GUIDE

MODEL NUMBER	SP2600VSP
TOTAL HP	1.50
MOTOR DESIGN	PERMANENT MAGNET, TOTALLY-ENCLOSED
SPEED RANGE	600 - 3000 RPM
VOLTAGE	230V SINGLE PHASE
PORT SIZE	1 1/2"



To take a closer look at the Super Pump VS or other Hayward products, go to www.hayward.com or call 1-888-HAYWARD.

Super Pump VS Pumps are listed by:

