

# FRONTIER IV DIVING BOARD



## Fiberglass ASSEMBLY AND INSTALLATION INSTRUCTIONS - PLEASE READ CAREFULLY -



### CAUTION

ALL MINIMUM WATER ENVELOPE DIMENSIONS FOR RESIDENTIAL INGROUND SWIMMING POOLS MUST MEET THE ANSI/APSP/ICC-5 2011 AMERICAN NATIONAL STANDARD FOR RESIDENTIAL INGROUND SWIMMING POOLS (REFERENCED THROUGHOUT THESE ASSEMBLY AND INSTALLATION INSTRUCTIONS AS "ANSI/APSP/ICC-5 2011"). ALL WATER ENVELOPE DIMENSIONS FOR PUBLIC SWIMMING POOLS MUST MEET THE ANSI/NSPI-1 2003 STANDARD FOR PUBLIC SWIMMING POOLS (REFERENCED THROUGHOUT THESE ASSEMBLY AND INSTALLATION INSTRUCTIONS AS "ANSI/NSP-1 2003"). COMPLY WITH LOCAL GOVERNMENT REGULATIONS IF THEY EXCEED ANSI/NSPI OR ANSI/APSP/ICC STANDARDS.

All diving boards and related equipment are manufactured for inground swimming pools ONLY. The S.R. Smith Diving Boards are designed to be easily transported and installed. Follow all instructions carefully and inspect closely to assure proper and safe installation.

PROPER INSTALLATION CANNOT BE OVERSTATED. IMPROPER INSTALLATION VOIDS S.R. SMITH'S WARRANTY AND MAY AFFECT THE SAFETY OF THE USER.

### WESTERN SALES AND MANUFACTURING PLANT CORPORATE HEADQUARTERS

P.O. Box 400 • 1017 S.W. Berg Parkway  
Canby, Oregon 97013  
Phone (503) 266-2231 • Fax (503) 266-4334

### EASTERN MANUFACTURING PLANT

105 Challenger Drive  
Portland, Tennessee 37148  
Phone (615) 325-0770 • Fax (615) 325-0775

[www.srsmith.com](http://www.srsmith.com)

## FRONTIER IV 8'

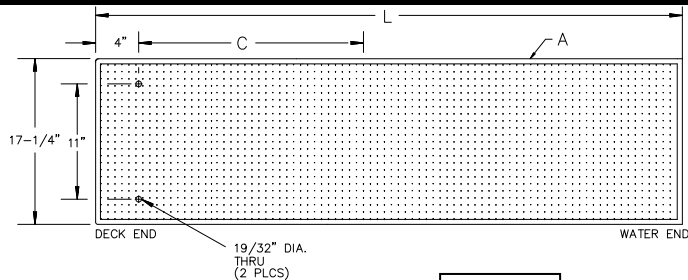


FIG. 1

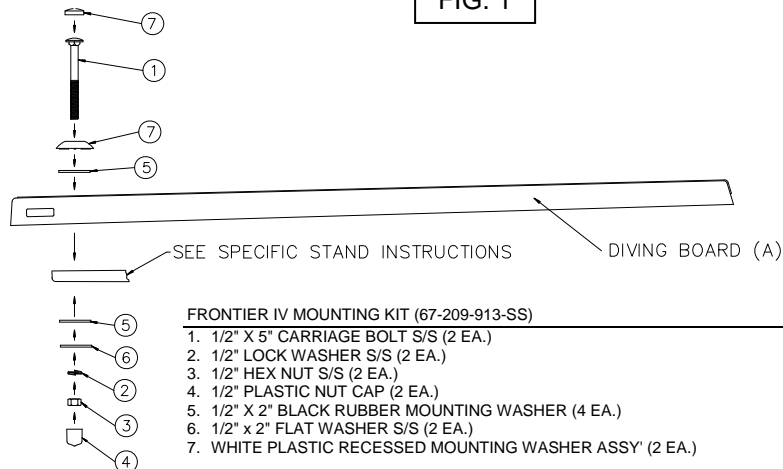


FIG. 2

## INSTALLATION INSTRUCTIONS

CONCRETE DECK AROUND JIG MUST BE 6" THICK MINIMUM.

- RESIDENTIAL:** READ CAREFULLY the following, and pages 1 through 8, which have been extracted from ANSI/APSP/ICC-5 2011 provided with the diving board and pay particular attention to Figure 3 and Table 1 set forth therein.
- COMMERCIAL:** READ CAREFULLY the following, and the Commercial Diving Board Instructions which have been provided with the diving board and pay particular attention to Figure 1 and Table 2 set forth therein extracted from ANSI/NSPI-1 2003.
- When mounting a diving board to a newly installed stand with a permanently fixed fulcrum, the correct measurement between the mounting holes and the fulcrum must be maintained so as not to void warranty. See Fulcrum Setting Chart below.

### FULCRUM SETTING CHART

Refer to Fig. 1

Model	Board A	Fulcrum Setting C	Actual Length L
FRONTIER IV	8'	40" ± 4"	94-1/2"

- The Rubber Fulcrum Pad MUST be used so as not to void S.R. Smith's warranty.
- Tighten hex nuts between 20 and 25 ft-lbs for fiberglass boards. DO NOT OVERTIGHTEN.

ONLY ONE PERSON ON A FRONTIER IV DIVING BOARD  
AT A TIME, WITH A MAXIMUM WEIGHT OF 400 LBS.