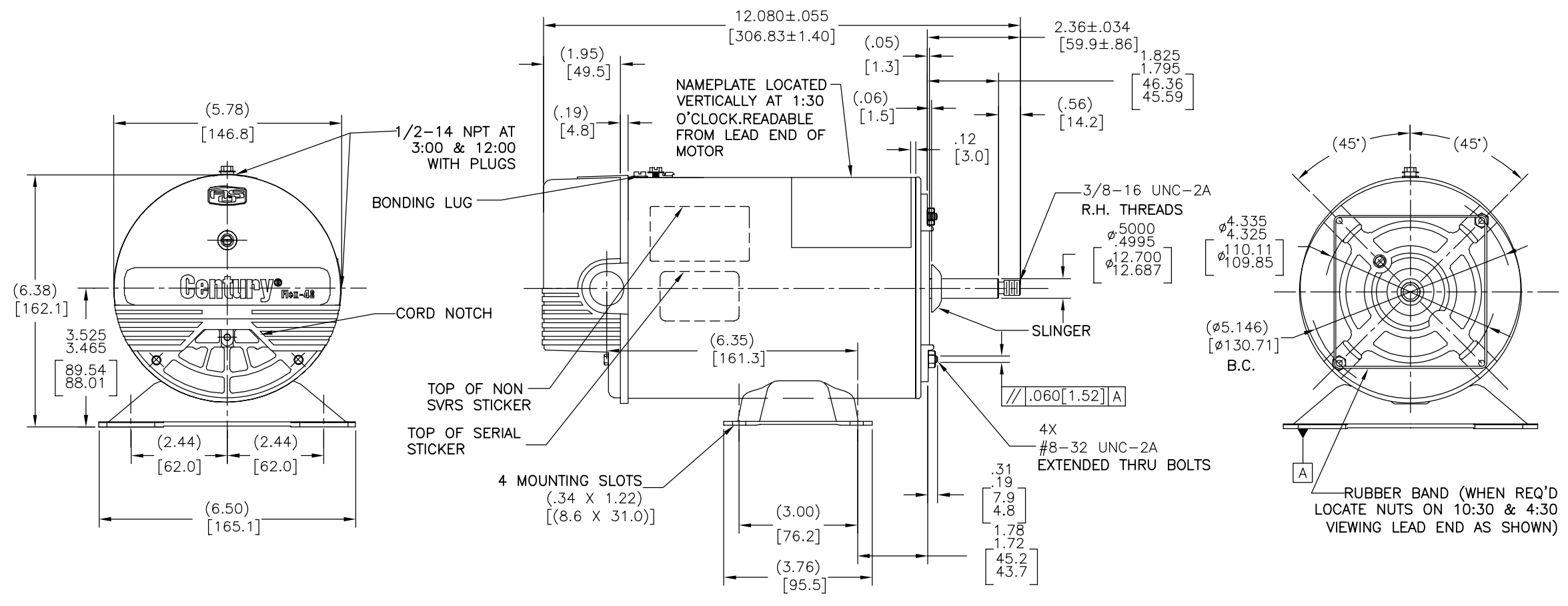
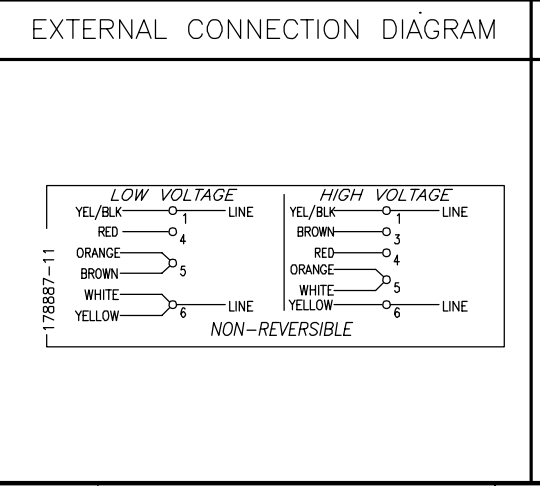


REV	ECO	REV BY	DATE	APPD	DATE
H	0025539	O. CARVAJAL	04-24-2012	D. BALDERRAMA	04-24-2012

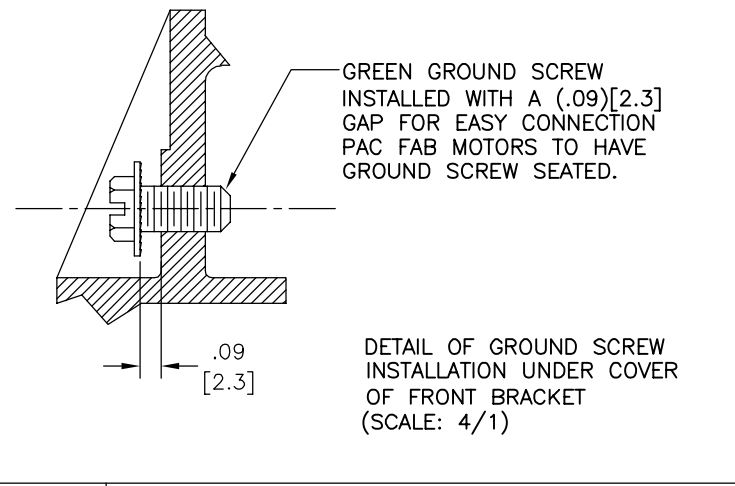


NAMEPLATE DATA	
MODEL: 186886	CUST PN: BN35SS
HP: 1.5	SF: 1.00
ROT: CCWPE	TYPE: CS
RPM: 3450	FORM: PHM
VOLTS: 230/115	CODE: G
AMPS: 8.0/16.0	FRAME: R 48 Y
MAX AMPS: -	
SF AMPS: -	
PH: 1	HZ: 60
INS: B	AMB: 40°C
DUTY: CONT	
ENCLOSURE: ODP	
THERMALLY PROTECTED	



NOTES

1. LEAD END FRAME TO BE ORIENTED TO DRIVE END FRAME TO WITHIN ±2'.
2. ALL DIMENSIONS SHOWN IN PARENTHESIS ARE REFERENCE DIMENSIONS. ANGULAR DIMS. = ±2'



PERFORMANCE CURVE	APPROVED SAMPLE		
16354011			
UL COMPONENT	CSA		
FILE#	CCN#	FILE#	GUIDE#
E14663	XEWR2	LR4642	4211-01
CUSTOMER			

GEOMETRIC CHARACTERISTICS & SYMBOLS

- FLATNESS
- STRAIGHTNESS
- ANGULARITY
- PERPENDICULARITY (SQUARENESS)
- PARALLELISM
- ROUNDNESS (CIRCULARITY)
- CYLINDRICITY
- PROFILE OF ANY SURFACE
- PROFILE OF ANY LINE
- RUNOUT
- TRUE POSITION
- CONCENTRICITY
- SYMMETRY

ASME Y14.5M 1994

UNLESS OTHERWISE SPECIFIED DIM. TOLERANCES ARE AS FOLLOWS:

INCH X XX XXX XXXX

mm ±0.5 ±0.13 ±0.013 ±0.005

ANG. ±50 DEG

REMOVE BURRS & BREAK SHARP EDGES:

INCH .003-.015 mm 0.1-0.4

CORNER FILLETS TO:

INCH .020 mm 0.5

MACHINE SURFACES:

INCH 125 mm 3.2

METRIC DIMS. SHOWN IN [BRACKETS]

DR BY: D. SCHUBERT 06-14-2006

APPD:

THIRD ANGLE PROJECTION

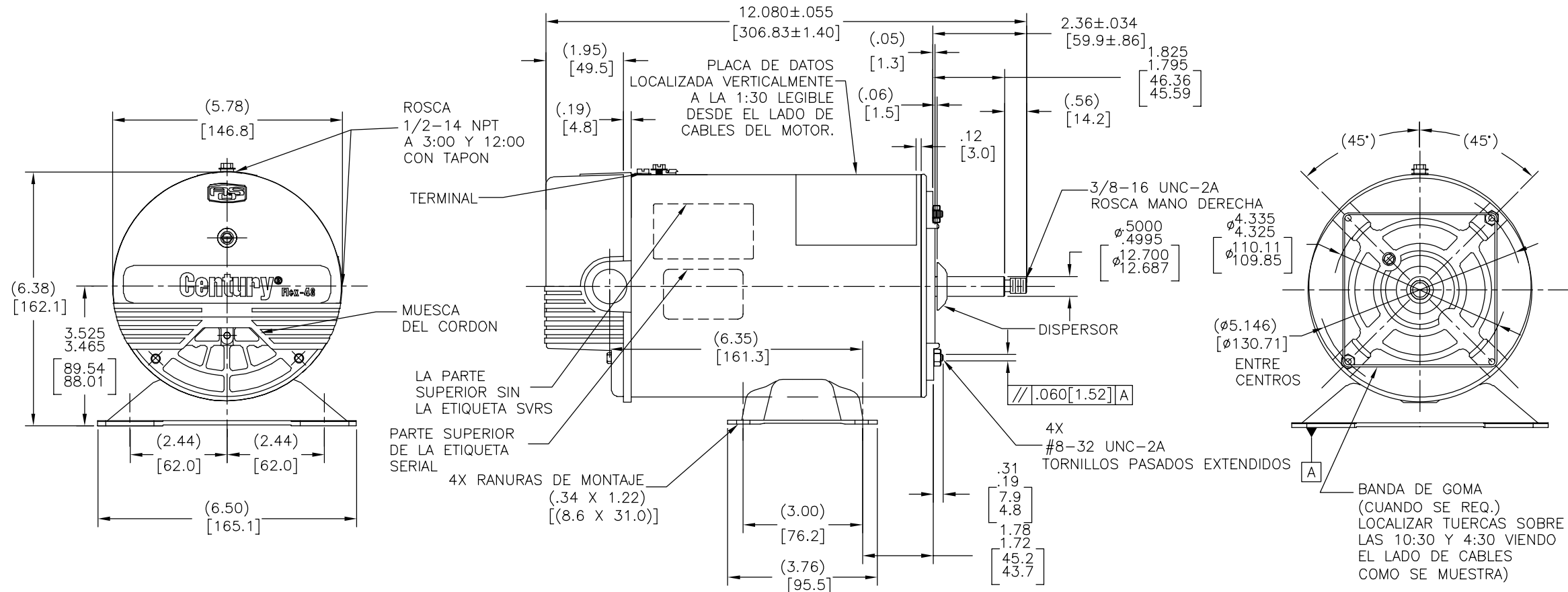
EDS DATE 11-11-2011

FORMAT REV G

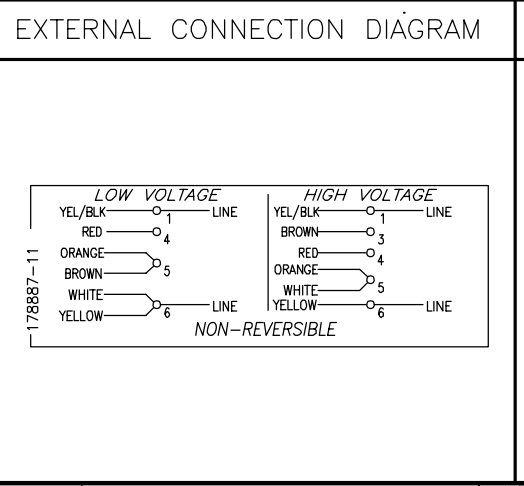
CONFIDENTIAL: THIS DRAWING AND ITS INFORMATION ARE THE EXCLUSIVE AND CONFIDENTIAL PROPERTY OF REGAL-BELOIT CORPORATION AND ARE NOT TO BE DISCLOSED, DUPLICATED, DISTRIBUTED OR OTHERWISE USED WITHOUT THE WRITTEN CONSENT OF REGAL-BELOIT CORPORATION. -ALL RIGHTS RESERVED.

REGAL-BELOIT CORPORATION	
DESCRIPTION	OUTLINE
SIZE	C
DWG NO	BN35SS
SCALE	NONE
SHEET	1

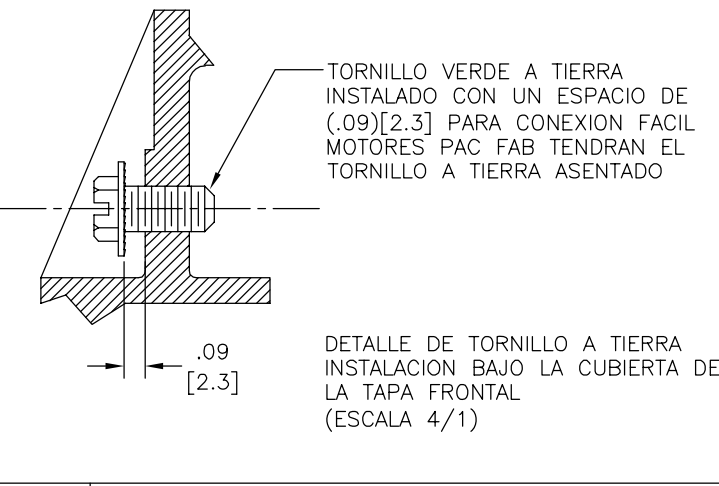
REVISION:	ECO	REVISADO POR:	FECHA:	APROBADO POR:	FECHA:
H	0025539	O. CARVAJAL	04-24-2012	D. BALDERRAMA	04-24-2012



NAMEPLATE DATA	
MODEL: 186886	CUST PN: BN35SS
HP: 1.5	SF: 1.00
ROT: CCWPE	RPM: 3450
TYPE: CS	CODE: G
FORM: PHM	FRAME: R 48 Y
VOLTS: 230/115	
AMPS: 8.0/16.0	
MAX AMPS:	
SF AMPS: -	
PH: 1	HZ: 60
INS: B	AMB: 40°C
DUTY: CONT	
ENCLOSURE: ODP	
THERMALLY PROTECTED	



- NOTES
- LADO DE CABLES DE CARCASA SERA ORIENTADA A LADO MOTRIZ DE LA CARCASA DENTRO DE ±2°.
  - TODAS LAS DIMENSIONES MOSTRADAS EN PARENTESIS SON DIMENSIONES DE REFERENCIA. DIMENSIONES ANGULARES = ±2°



PERFORMANCE CURVE	APPROVED SAMPLE
16354011	CSA
UL COMPONENT	FILE#
E14663	XEWR2
CUSTOMER	FILE#
	LR4642
	GUIDE#
	4211-01

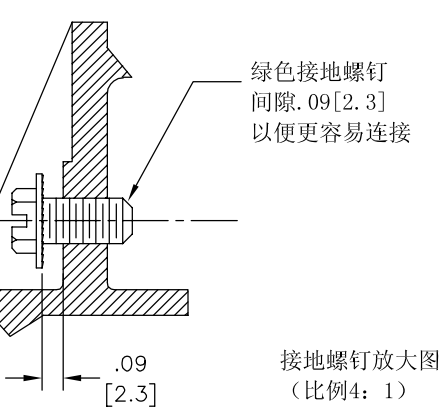
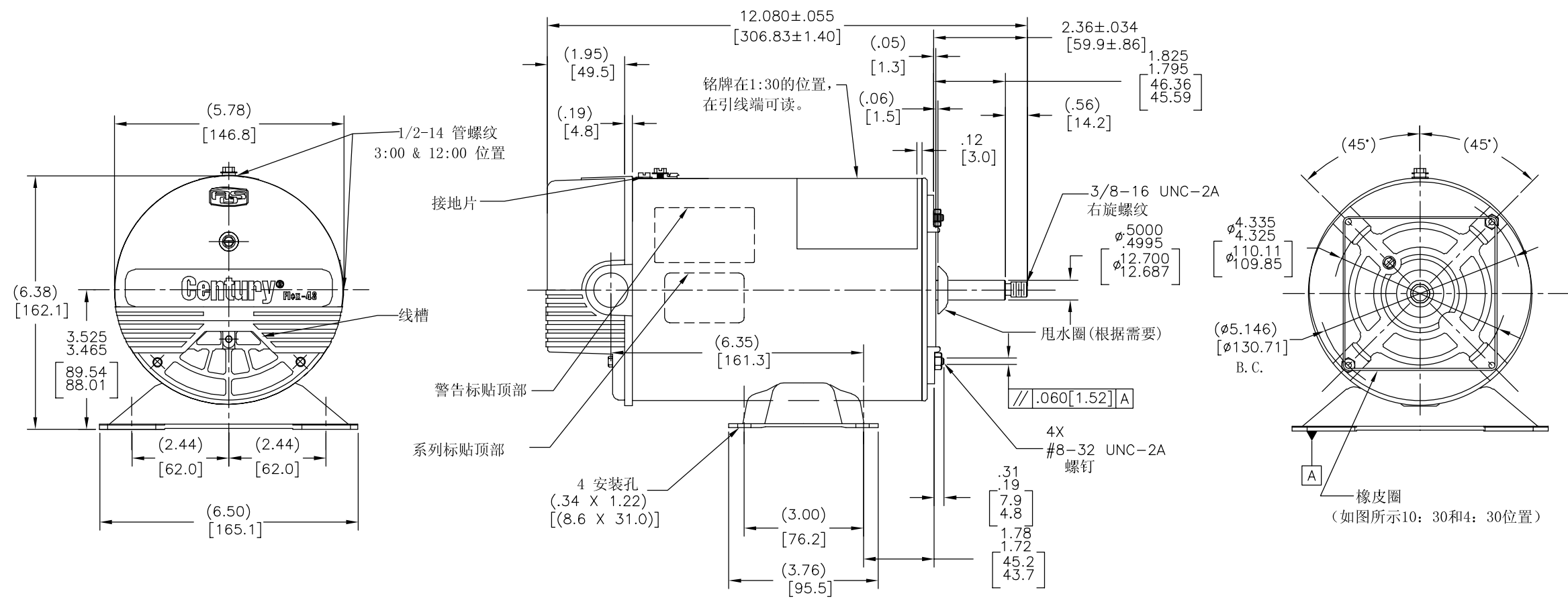
CARACTERISTICAS DE GEOMETRIA Y SIMBOLOS	A MENOS QUE SE ESPECIFIQUE DE OTRA MANERA, LAS TOLERANCIAS DE LAS DIMS; SON LAS SIGUIENTES:
<ul style="list-style-type: none"> <li>□ PLANICIDAD</li> <li>— RECTITUD</li> <li>∠ ANGULARIDAD</li> <li>⊥ PERPENDICULARIDAD (A ESCUADRA)</li> <li>// PARALELISMO</li> <li>○ REDONDEZ (CIRCULARIDAD)</li> <li>⊘ CILINDRICIDAD</li> <li>△ PERFIL DE CUALQUIER SUPERFICIE</li> <li>∩ PERFIL DE CUALQUIER LINEA</li> <li>↑ VARIACION</li> <li>⊕ POSICION REAL</li> <li>⊙ CONCENTRICIDAD</li> <li>= SIMETRIA</li> </ul>	<p>PULG ±.1 ±.02 ±.005 ±.0005</p> <p>mm ±0.5 ±0.13 ±0.013</p> <p>ANG. ±.50 GRADOS</p> <p>ELIMINAR REBABAS Y ORILLAS FILOSAS DEL BORDE.</p> <p>PULG .003-.015 mm 0.1-0.4</p> <p>FILETEAR ESQUINA: PULG .020 mm 0.5</p> <p>MAQUINAR SUPERFICIES</p> <p>PULG 125 mm 3.2</p>
ASME Y14.5M 1994	DIMS METRICAS MOSTRADAS [PARENTESIS]

DIBUJADO POR:	06-14-2006
D. SCHUBERT	
APROBADO POR:	
TERCER ANGULO DE PROYECCION	FECHA EDS: 11-11-2011
	REV. FORMATO: G

CONFIDENCIAL: ESTE DIBUJO Y SU INFORMACION SON PROPIEDAD DE USO EXCLUSIVO Y CONFIDENCIAL DE REGAL-BELOIT CORPORATION. Y NO DEBERAN SER REVELADOS, DUPLICADOS, DISTRIBUIDOS O USARSE DE OTRA MANERA SIN EL CONSENTIMIENTO ESCRITO DE REGAL-BELOIT CORPORATION. -TODOS LOS DERECHOS RESERVADOS.

DESCRIPCION:	OUTLINE
TAMAÑO: C	NUMERO DE DIBUJO: BN35SS
ESCALA: NONE	HOJA: 1

版本	ECO	编制	日期	批准	日期
H	0025539	O. CARVAJAL	04-24-2012	D. BALDERRAMA	04-24-2012



NAMEPLATE DATA	EXTERNAL CONNECTION DIAGRAM	NOTES
MODEL: 186886 CUST PN: BN35SS HP: 1.5 SF: 1.00 ROT: CCWPE RPM: 3450 TYPE: CS CODE: G FORM: PHM FRAME: R 48 Y VOLTS: 230/115 AMPS: 8.0/16.0 MAX AMPS: SF AMPS: - PH: 1 HZ: 60 INS: B AMB: 40°C DUTY: CONT ENCLOSURE: ODP THERMALLY PROTECTED		1. 引出线端的端盖与驱动端的端盖位置公差±2° 2. 括号内的尺寸为参考尺寸。

PERFORMANCE CURVE	APPROVED SAMPLE	形位公差 □ 平面度 ⊥ 垂直度 ∠ 倾斜度 ∥ 平行度 ○ 圆度 ⊙ 圆柱度 ⌒ 面轮廓度 ⊖ 线轮廓度 ↗ 圆跳动 ⊕ 位置度 ⊙ 同轴度 ≡ 对称度	除另有注明 尺寸公差如下: 英寸 X XX XXX XXXX 毫米 ±.1 ±.02 ±.005 ±.0005 ±0.5 ±0.13 ±0.013 角度 ±.50 度 清理毛刺和尖棱 英寸 .003-.015 毫米 0.1-0.4 内圆角 英寸 .020 毫米 0.5 表面粗糙度 英制 125 米制 3.2 米制尺寸显示在 [ ]	绘图: D. SCHUBERT	06-14-2006				
16354011	CSA			图纸格式发布日期 11-11-2011 图纸格式版本 G	名称		OUTLINE		
UL COMPONENT	CSA			第三角投影		图幅	C	图号	BN35SS
FILE#	CCN#	FILE#	GUIDE#	机密: 本图纸及相关信息所有权归REGAL-BELOIT CORPORATION。未经REGAL-BELOIT CORPORATION书面授权, 不得泄露、复制、传播或作其他用途。--版权所有		比例	NONE	页号	1
E14663	XEWR2	LR4642	4211-01						