

4

3

2

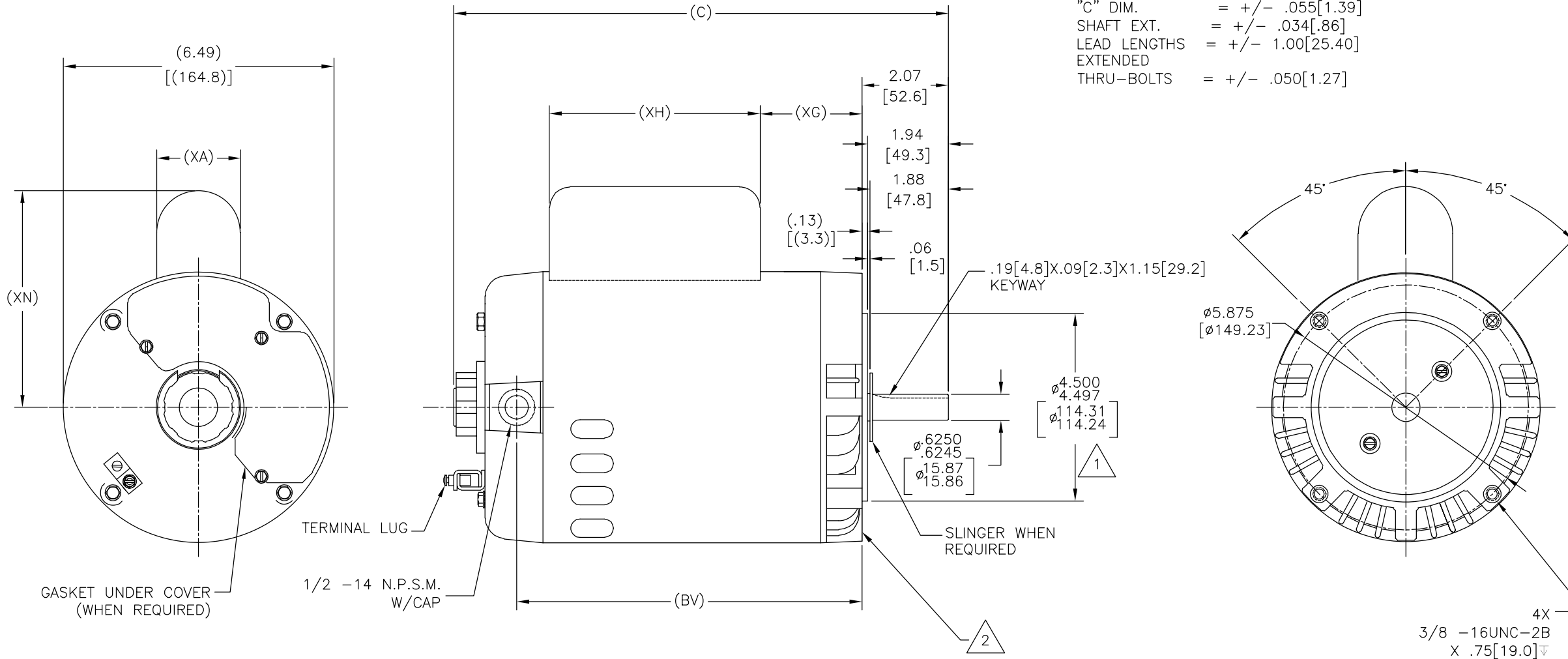
1

PART NO.	FRAME	(C)	(BV)	(XA)	(XG)	(XH)	(XN)
195005-01	X56C	12.54[318.5]	9.03[229.3]	2.01[51.1]	3.19[81.0]	5.06[128.5]	5.20[132.1]
195005-02	P56C	13.04[331.2]	9.53[242.1]	2.01[51.1]	3.19[81.0]	5.06[128.5]	5.20[132.1]
195005-03	U56C	12.04[305.8]	8.53[216.7]	2.01[51.1]	2.69[68.3]	5.06[128.5]	5.20[132.1]

REV	ECO	REV BY	DATE	APPD	DATE
C	ECO-0008802	IVAN LOPEZ	01-04-2010	D.JUAREZ	01-04-2010

ALL DIMENSIONS SHOWN IN PARENTHESIS ARE REFERENCE DIMENSIONS. ALL OTHER DIMENSIONS ARE TOLERANCED PER THE FOLLOWING CHART UNLESS OTHERWISE SPECIFIED.

"C" DIM. = +/- .055[1.39]  
 SHAFT EXT. = +/- .034[.86]  
 LEAD LENGTHS = +/- 1.00[25.40]  
 EXTENDED  
 THRU-BOLTS = +/- .050[1.27]



NOTES:

1. PILOT DIAMETER IS CONCENTRIC WITH SHAFT  $\pm$  WITHIN .004[.10] T.I.R.
2. FACE OF MOUNTING FLANGE IS PERPENDICULAR TO SHAFT  $\pm$  WITHIN .004[.10] T.I.R.
3. SHAFT RUNOUT NOT TO EXCEED .002[.05] T.I.R.
4. FOR THREADED SHAFT EXT. MATING PARTS SHOULD BE RELIEVED ON THREAD TO CLEAR FILLET.

GEOMETRIC CHARACTERISTICS & SYMBOLS

- ▭ FLATNESS
- STRAIGHTNESS
- ∠ ANGULARITY
- ⊥ PERPENDICULARITY (SQUARENESS)
- ∥ PARALLELISM
- ROUNDNESS (CIRCULARITY)
- ⊘ CYLINDRICITY
- △ PROFILE OF ANY SURFACE
- ∩ PROFILE OF ANY LINE
- ↗ RUNOUT
- ⊕ TRUE POSITION
- ◎ CONCENTRICITY
- ≡ SYMMETRY

UNLESS OTHERWISE SPECIFIED DIM. TOLERANCES ARE AS FOLLOWS:

INCH	±.1	±.02	±.005	±.0005
mm	±0.5	±0.13	±0.013	

ANG. ±.50 DEG  
 REMOVE BURRS & BREAK SHARP EDGES:  
 INCH .003-.015 mm 0.1-0.4  
 CORNER FILLETS TO:  
 INCH .020 mm 0.5  
 MACHINE SURFACES:  
 INCH 125 mm 3.2  
 METRIC DIMS. SHOWN IN [BRACKETS]

DR BY: VIVWHI 11-29-1999

APPD:

THIRD ANGLE PROJECTION

EDS DATE 02-22-2008  
 FORMAT REV F

CONFIDENTIAL: THIS DRAWING AND ITS INFORMATION ARE THE EXCLUSIVE AND CONFIDENTIAL PROPERTY OF A.O. SMITH CORP. AND ARE NOT TO BE DISCLOSED, DUPLICATED, DISTRIBUTED OR OTHERWISE USED WITHOUT THE WRITTEN CONSENT OF A.O. SMITH CORP.  
 -ALL RIGHTS RESERVED. ASME Y14.5M 1994

**ACSmith** **ELECTRICAL PRODUCTS COMPANY**  
 Innovation has a name. A DIVISION OF A. O. SMITH CORPORATION

DESCRIPTION: **OUTLINE**

SIZE: C DWG NO: 195005

SCALE: NONE SHEET 1

4

3

2

1

4

3

2

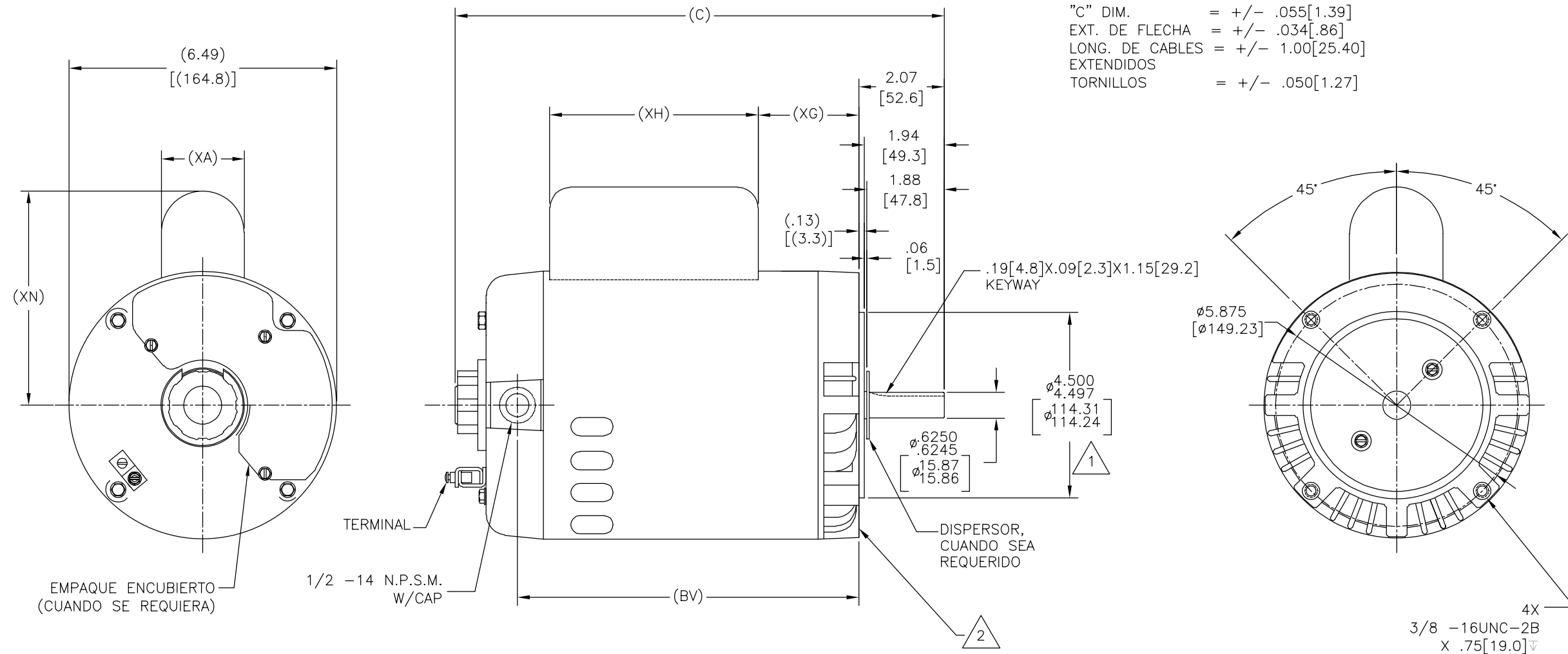
1

NO. DE PARTE	CARCAZA	(C)	(BV)	(XA)	(XG)	(XH)	(XN)
195005-01	X56C	12.54[318.5]	9.03[229.3]	2.01[51.1]	3.19[81.0]	5.06[128.5]	5.20[132.1]
195005-02	P56C	13.04[331.2]	9.53[242.1]	2.01[51.1]	3.19[81.0]	5.06[128.5]	5.20[132.1]
195005-03	U56C	12.04[305.8]	8.53[216.7]	2.01[51.1]	2.69[68.3]	5.06[128.5]	5.20[132.1]

REVISION:	ECO	REVISADO POR:	FECHA:	APROBADO POR:	FECHA:
C	ECO-0008802	IVAN LOPEZ	01-04-2010	D.JUAREZ	01-04-2010

TODAS LAS DIMENSIONES EN PARENTESIS SON DE REFERENCIA. TODAS LAS OTRAS DIMENSIONES SON TOLERANCIAS ESPECIFICADAS EN LA SIGUIENTE TABLA, A MENOS QUE SE ESPECIFIQUE DE OTRA MANERA

"C" DIM. = +/- .055[1.39]  
 EXT. DE FLECHA = +/- .034[.86]  
 LONG. DE CABLES = +/- 1.00[25.40]  
 EXTENDIDOS  
 TORNILLOS = +/- .050[1.27]



- NOTAS:
1. EL DIAMETRO GUIA ES CONCENTRICO CON LA  $\perp$  DE LA FLECHA DENTRO DE .004[.10]L.T.I.
  2. LA CARA DEL REBORDE DE MONTAJE ES PERPENDICULAR A LA  $\perp$  DE LA FLECHA DENTRO DE .004[.10] L.T.I.
  3. JUEGO AXIAL MAXIMO NO EXEDERA DE .002[.05] L.T.I.
  4. PARA EXTENSION ROSCADA DE FLECHA .PARTES COINCIDENTES DEBEN ENSAMBLAR LIBRES EN LA ROSCA

CARACTERISTICAS DE GEOMETRIA Y SIMBOLOS ▽ PLANICIDAD — RECTITUD < ANGULARIDAD ⊥ PERPENDICULARIDAD (A ESCUADRA) // PARALELISMO ○ REDONDEZ (CIRCULARIDAD) ∅ CILINDRICIDAD △ PERFIL DE CUALQUIER SUPERFICIE ▲ PERFIL DE CUALQUIER LINEA ↗ VARIACION ⊕ POSICION REAL ⊙ CONCENTRICIDAD = SIMETRIA	A MENOS QUE SE ESPECIFIQUE DE OTRA MANERA, LAS TOLERANCIAS DE LAS DIMS; SON LAS SIGUIENTES: PULG ±.1 ±.02 ±.005 ±.0005 mm ±0.5 ±0.13 ±0.013 ANG. ±50 GRADOS ELIMINAR REBABAS Y ORILLAS FILOSAS DEL BORDE. PULG .003-.015 mm 0.1-0.4 FILETEAR ESQUINA: PULG .020 mm 0.5 MAQUINAR SUPERFICIES PULG 125 mm 3.2 DIMS METRICAS MOSTRADAS [PARENTESIS]	DIBUJADO POR: VIVWHI 11-29-1999	AOSmith Innovation has a name. <b>ELECTRICAL PRODUCTS COMPANY</b> A DIVISION OF A. O. SMITH CORPORATION
		APROBADO POR: . TERCER ANGULO DE PROYECCION 3/4	

4

3

2

1

4

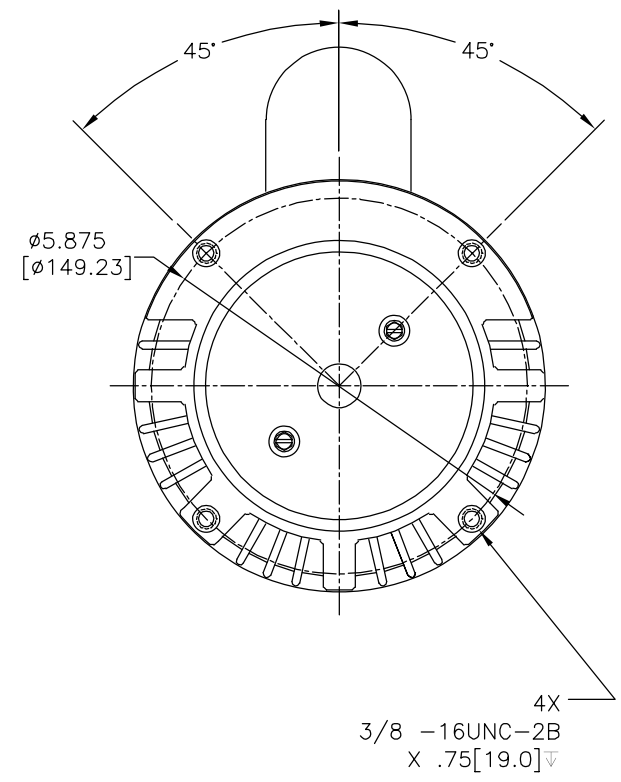
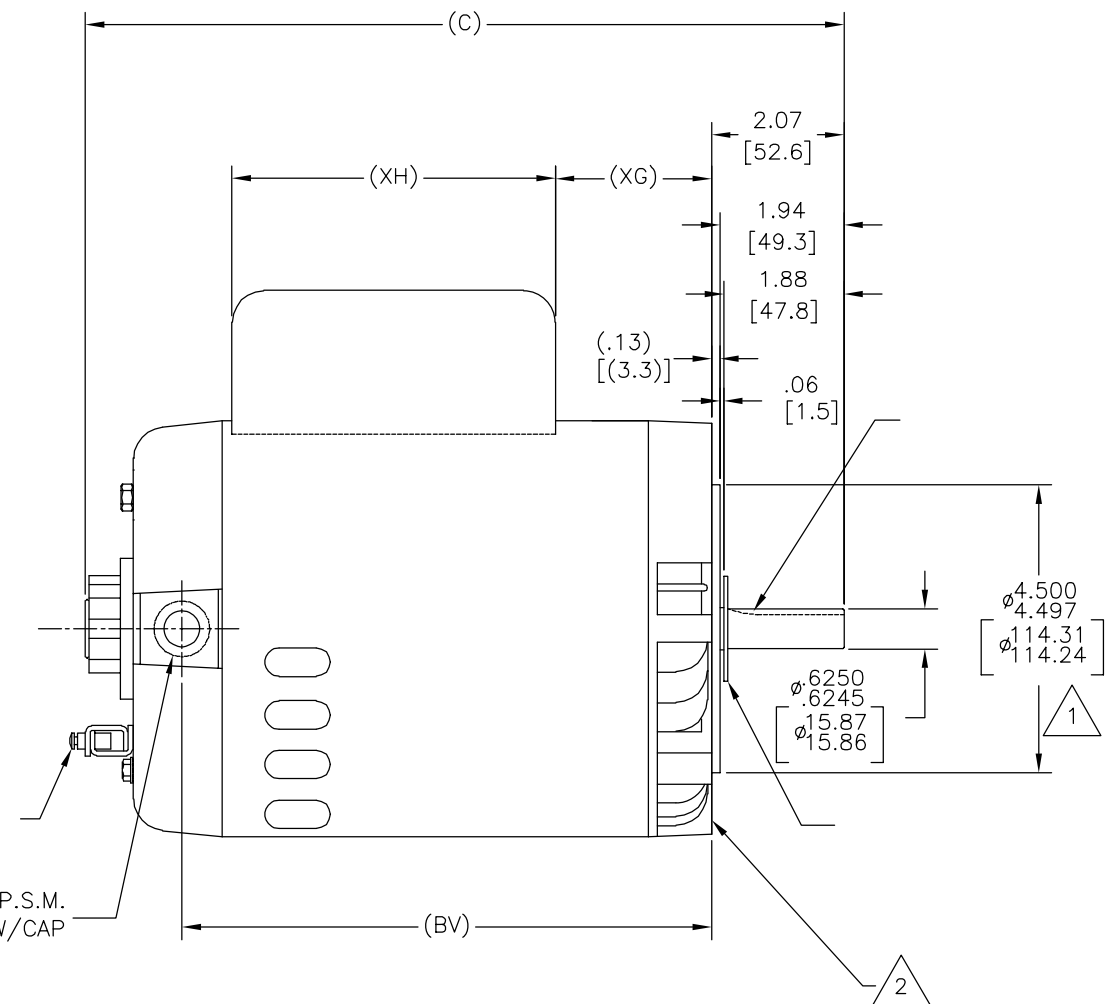
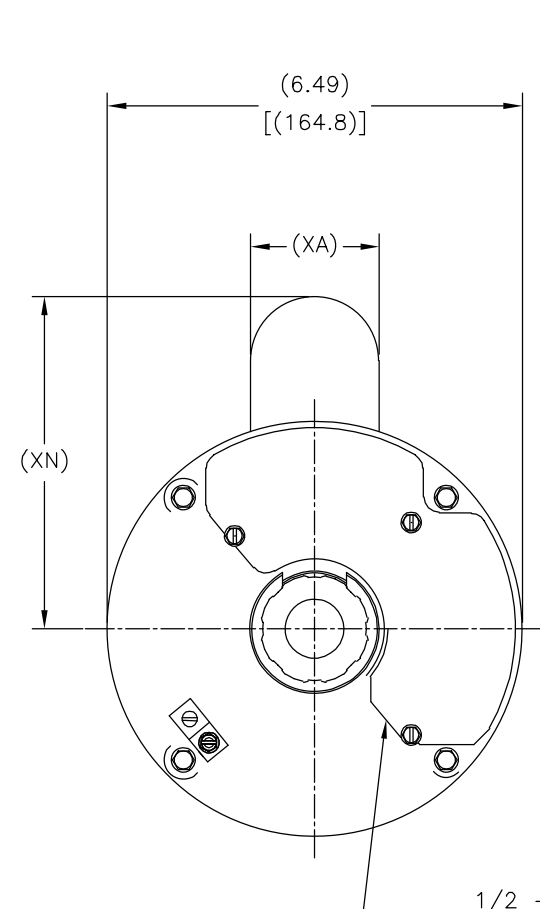
3

2

1

		(C)	(BV)	(XA)	(XG)	(XH)	(XN)
195005-01	X56C	12.54[318.5]	9.03[229.3]	2.01[51.1]	3.19[81.0]	5.06[128.5]	5.20[132.1]
195005-02	P56C	13.04[331.2]	9.53[242.1]	2.01[51.1]	3.19[81.0]	5.06[128.5]	5.20[132.1]
195005-03	U56C	12.04[305.8]	8.53[216.7]	2.01[51.1]	2.69[68.3]	5.06[128.5]	5.20[132.1]

版本	ECO	编制	日期	批准	日期
C	ECO-0008802	IVAN LOPEZ	01-04-2010	D.JUAREZ	01-04-2010



形位公差	除另有注明 尺寸公差如下:
□ 平面度	英寸 X ±.1 ±.02 ±.005 ±.0005
— 直线度	毫米 ±0.5 ±0.13 ±0.013
∠ 倾斜度	角度 ±.50 度
⊥ 垂直度	清理毛刺和尖棱
∥ 平行度	英寸 .003-.015 毫米 0.1-0.4
○ 圆度	内圆角
⊙ 圆柱度	英寸 .020 毫米 0.5
△ 面轮廓度	表面粗糙度
∩ 线轮廓度	英制 125 米制 3.2
↗ 圆跳动	米制尺寸显示在 [ ]
⊕ 位置度	
◎ 同轴度	
≡ 对称度	

绘图:	VIVWHI	11-29-1999
批准:		
第三角投影		图纸格式发布日期 02-22-2008 图纸格式版本 F
机密: 本图纸及相关信息所有权归A. O. SMITH公司所有。未经A. O. SMITH公司书面授权, 不得泄露、复制、传播或作其他用途。—版权所有		
ASME Y14.5M 1994		

<b>ACSmith</b> Innovation has a name.		<b>ELECTRICAL PRODUCTS COMPANY</b> A DIVISION OF A. O. SMITH CORPORATION	
名称 <b>OUTLINE</b>			
图幅	C	图号	195005
比例	NONE	页号	1

4

3

2

1