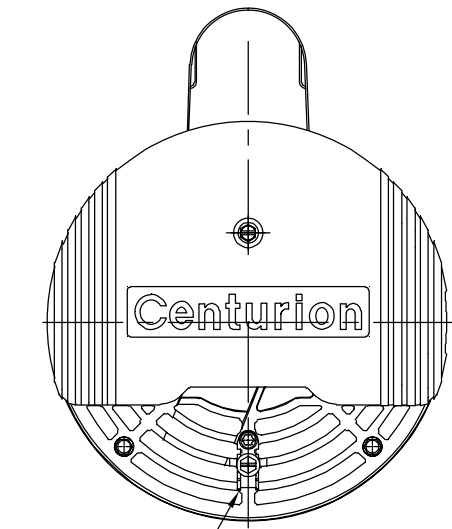
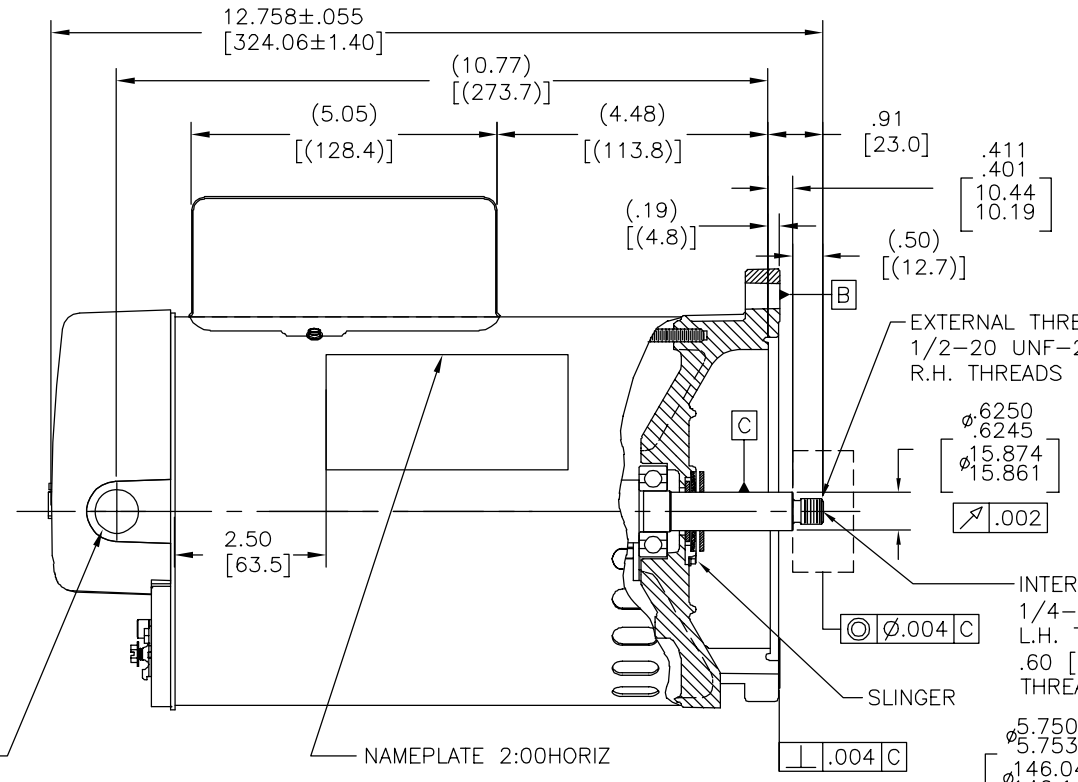


REV	ECO	REV BY	DATE	APPD	DATE
D	0025531	F.NAVARRO	04-24-2012	R.RASCON	04-24-2012



BONDING LUG

1/2-14 N.P.S.M. WITH CAP



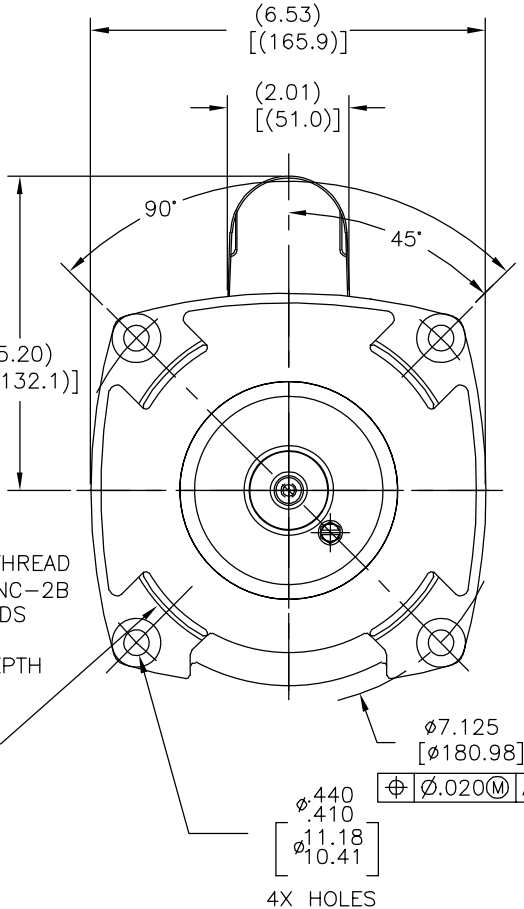
EXTERNAL THREADS  
1/2-20 UNF-2A  
R.H. THREADS

φ.6250  
φ.6245  
φ.15.874  
φ.15.861  
[.002]

INTERNAL THREAD  
1/4-20 UNC-2B  
L.H. THREADS  
.60 [15.2]  
THREAD DEPTH

SLINGER

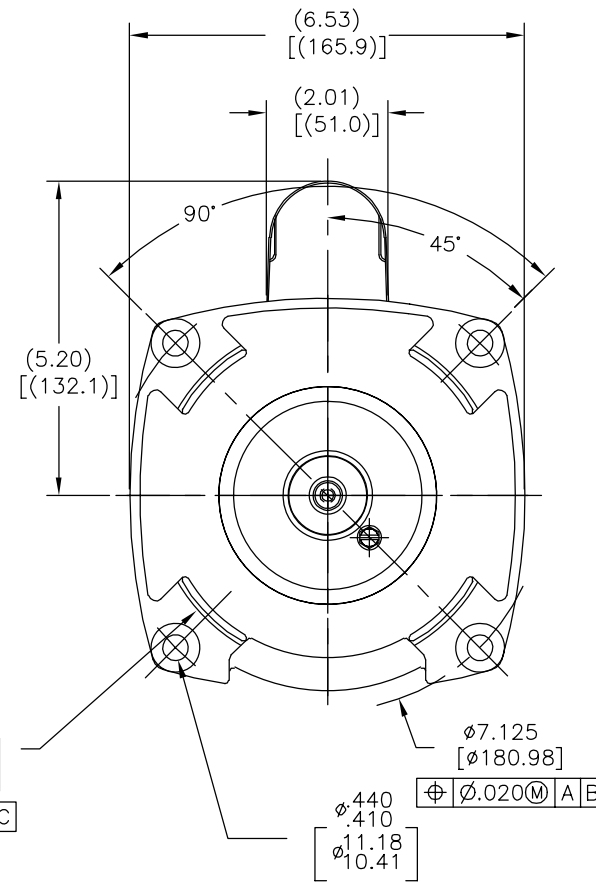
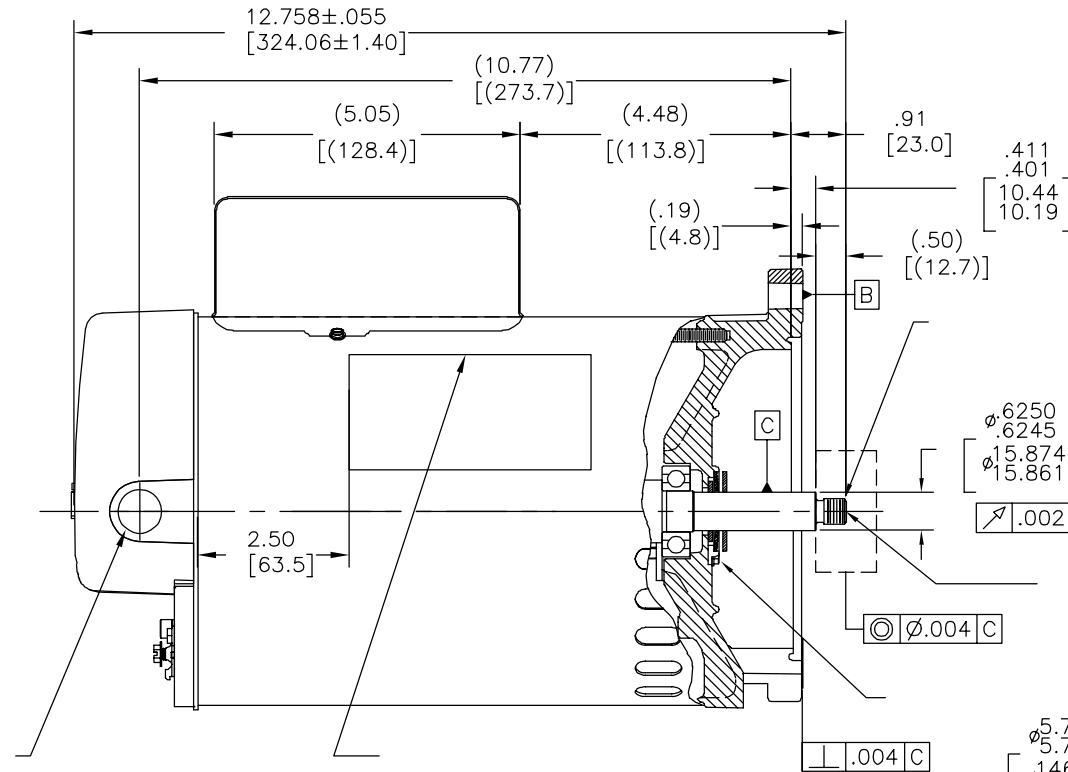
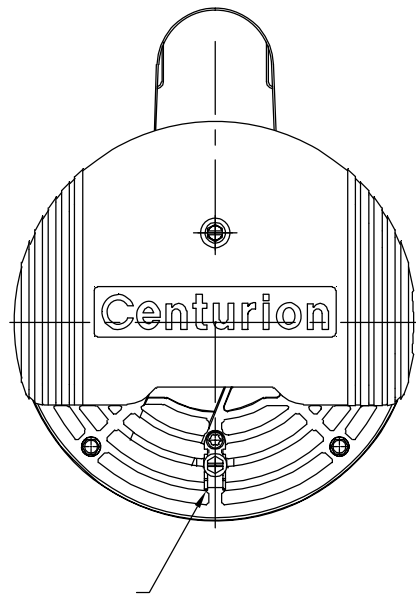
φ.750  
φ.753  
φ.146.04  
φ.146.11  
[.004 C]  
[.006 C]  
-A-



NAMEPLATE DATA	EXTERNAL CONNECTION DIAGRAM	NOTES
MODEL: F56AA40A01 CUST PN: B2854 HP: 1.5 SF: 1.10 ROT: CCWPE RPM: 3450 TYPE: CX CODE: J FORM: FRAME: Y 56 Y VOLTS: 230/115 AMPS: - MAX AMPS: SF AMPS: 8.0/16.0 PH: 1 HZ: 60 INS: F AMB: 50 C DUTY: CONT ENCLOSURE: ODP THERMALLY PROTECTED	<p>175367-29</p> <p>HIGH VOLTAGE SHOWN, ROTATE DIAL CCW TO 115° FOR LOW VOLTAGE.                      USE COPPER CONDUCTORS ONLY.                      INSTALL MOTOR WITH VENTS DOWN.                      ACCEPTABLE FOR FIELD WIRING</p>	1. FOR THREADED SHAFT EXTENSION ECCENTRICITY OF THREADED PORTION OF SHAFT IS HELD WITHIN .004[.01] TOTAL GAGE READING WITH THE INDICATOR ON O.D. OF GROUND RING GAGE AS SHOWN. THE GAGE BEING STATIONARY WITH RESPECT TO THE ROTOR. 2. END PLAY NOT TO EXCEED .010[.25] MEASURED WITH NO THRUST. 3. FINISH PAINT TO BE BLACK.

PERFORMANCE CURVE	APPROVED SAMPLE	GEOMETRIC CHARACTERISTICS & SYMBOLS ▽ FLATNESS - STRAIGHTNESS < ANGLARITY ⊥ PERPENDICULARITY (SQUARENESS) // PARALLELISM ○ ROUNDNESS (CIRCULARITY) ∅ CYLINDRICITY △ PROFILE OF ANY SURFACE ∩ PROFILE OF ANY LINE ↑ RUNOUT ⊕ TRUE POSITION ⊙ CONCENTRICITY = SYMMETRY	UNLESS OTHERWISE SPECIFIED DIM. TOLERANCES ARE AS FOLLOWS: INCH X XX XXX XXXX ±.1 ±.02 ±.005 ±.0005 mm ±0.5 ±0.13 ±0.013 ANG. ±.50 DEG REMOVE BURRS & BREAK SHARP EDGES: INCH .003-.015 mm 0.1-0.4 CORNER FILLETS TO: INCH .020 mm 0.5 MACHINE SURFACES: INCH 125 mm 3.2 METRIC DIMS. SHOWN IN [BRACKETS]	DR BY: JLHESS	06-11-2009
16381811	B2848			APPD: D.FOX	06-11-2009
UL COMPONENT	CSA	THIRD ANGLE PROJECTION	EDS DATE 11-11-2011 FORMAT REV G	REGAL-BELOIT CORPORATION	
FILE# CCN# FILE# GUIDE#	PENDING PENDING PENDING PENDING			DESCRIPTION OUTLINE	
CUSTOMER	DISTRIBUTION	CONFIDENTIAL: THIS DRAWING AND ITS INFORMATION ARE THE EXCLUSIVE AND CONFIDENTIAL PROPERTY OF REGAL-BELOIT CORPORATION AND ARE NOT TO BE DISCLOSED, DUPLICATED, DISTRIBUTED OR OTHERWISE USED WITHOUT THE WRITTEN CONSENT OF REGAL-BELOIT CORPORATION. -ALL RIGHTS RESERVED.		SIZE C	DWG NO B2854
		SCALE NONE		SHEET 1	

REVISION:	ECO	REVISADO POR:	F.NAVARRO	FECHA:	04-24-2012	APROBADO POR:	R.RASCON	FECHA:	04-24-2012
D	0025531								



NAMEPLATE DATA	EXTERNAL CONNECTION DIAGRAM	NOTES
MODEL: F56AA40A01 CUST PN: B2854 HP: 1.5 SF: 1.10 ROT: CCWPE RPM: 3450 TYPE: CX CODE: J FORM: FRAME: Y 56 Y VOLTS: 230/115 AMPS: - MAX AMPS: SF AMPS: 8.0/16.0 PH: 1 HZ: 60 INS: F AMB: 50 C DUTY: CONT ENCLOSURE: ODP THERMALLY PROTECTED	<p>175367-29</p> <p>HIGH VOLTAGE SHOWN. ROTATE DIAL CCW TO 115 FOR LOW VOLTAGE.                      USE COPPER CONDUCTORS ONLY.                      INSTALL MOTOR WITH VENTS DOWN.                      ACCEPTABLE FOR FIELD WIRING</p>	

PERFORMANCE CURVE	APPROVED SAMPLE	CARACTERISTICAS DE GEOMETRIA Y SIMBOLOS Z PLANICIDAD - RECTITUD < ANGULARIDAD ⊥ PERPENDICULARIDAD (A ESCUADRA) // PARALELISMO ○ REDONDEZ (CIRCULARIDAD) ∅ CILINDRICIDAD △ PERFIL DE CUALQUIER SUPERFICIE ∩ PERFIL DE CUALQUIER LINEA / VARIACION ⊕ POSICION REAL ⊙ CONCENTRICIDAD = SIMETRIA	A MENOS QUE SE ESPECIFIQUE DE OTRA MANERA, LAS TOLERANCIAS DE LAS DIMS; SON LAS SIGUIENTES: PULG ±.1 ±.02 ±.005 ±.0005 mm ±0.5 ±0.13 ±0.013 ANG. ±.50 GRADOS ELIMINAR REBABAS Y ORILLAS FILASAS DEL BORDE. PULG .003-.015 mm 0.1-0.4 FILETEAR ESQUINA: PULG .020 mm 0.5 MAQUINAR SUPERFICIES PULG 125 mm 3.2 DIMS METRICAS MOSTRADAS [PARENTESIS]	DIBUJADO POR: JLHESS	06-11-2009
16381811	B2848			APROBADO POR: D.FOX	06-11-2009
UL COMPONENT	CSA			TERCER ANGULO DE PROYECCION	FECHA EDS: 11-11-2011 REV. FORMATO: G
FILE#	CCN#			FILE#	GUIDE#
PENDING	PENDING	PENDING	PENDING		
CUSTOMER	DISTRIBUTION				

DESCRIPCION:	OUTLINE
TAMAÑO: C	NUMERO DE DIBUJO: B2854
ESCALA: NONE	HOJA: 1

4

3

2

1

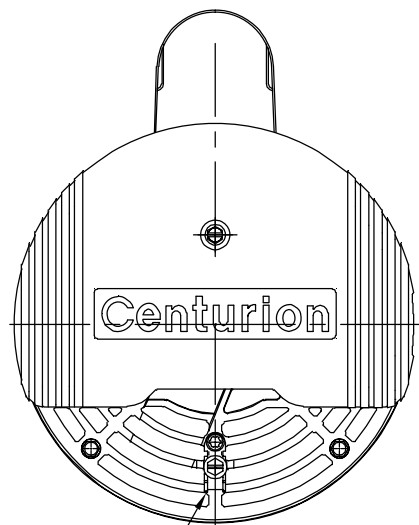
4

3

2

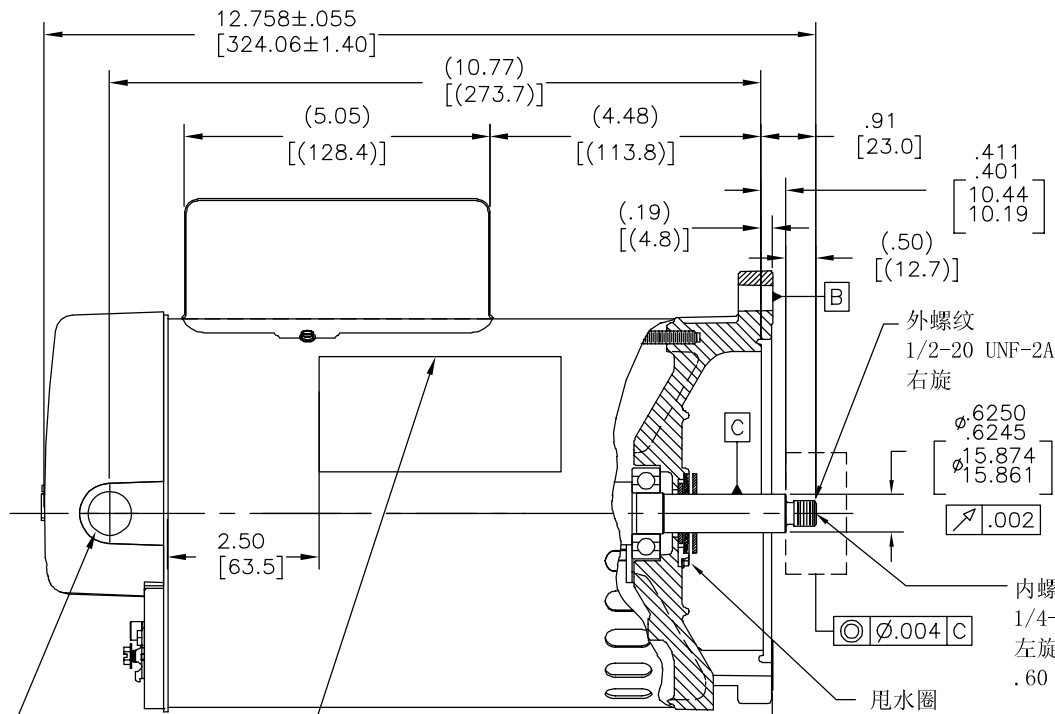
1

版本	ECO	编制	日期	批准	日期
D	0025531	F.NAVARRO	04-24-2012	R.RASCON	04-24-2012

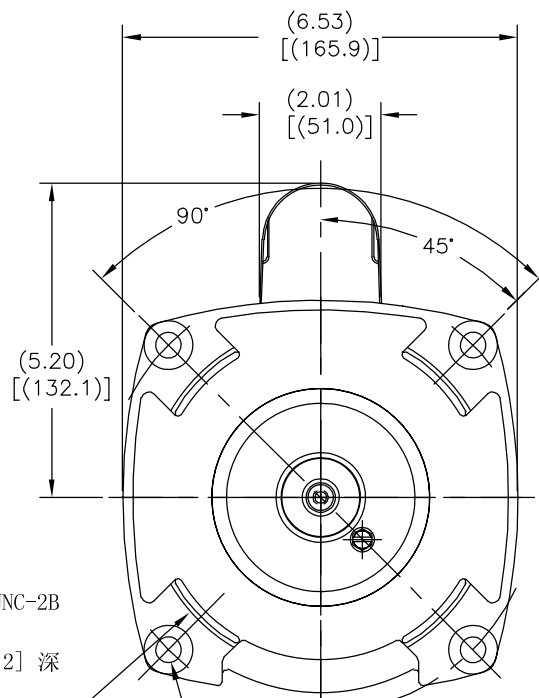


接线片

1/2-14 N. P. S. M.  
带塞子



铭牌粘贴在水平2点位置



NAMEPLATE DATA	EXTERNAL CONNECTION DIAGRAM	NOTES
MODEL: F56AA40A01 CUST PN: B2854 HP: 1.5 SF: 1.10 ROT: CCWPE RPM: 3450 TYPE: CX CODE: J FORM: FRAME: Y 56 Y VOLTS: 230/115 AMPS: - MAX AMPS: SF AMPS: 8.0/16.0 PH: 1 HZ: 60 INS: F AMB: 50 C DUTY: CONT ENCLOSURE: ODP THERMALLY PROTECTED	<p>175367-29</p> <p>HIGH VOLTAGE SHOWN, ROTATE DIAL CCW TO 115 FOR LOW VOLTAGE. USE COPPER CONDUCTORS ONLY. INSTALL MOTOR WITH VENTS DOWN. ACCEPTABLE FOR FIELD WIRING</p>	技术要求: 1. 量规测量方法如图所示, 螺纹外径与中心的同心度为.004[.10] 2. 轴向窜动不超过.010[.25] 3. 表面最终颜色为黑色。

PERFORMANCE CURVE	APPROVED SAMPLE	形位公差 □ 平面度 〱 直线度 〳 倾斜度 ⊥ 垂直度 〰 平行度 ○ 圆度 ⊙ 圆柱度 〰 面轮廓度 〰 线轮廓度 〰 圆跳动 ⊕ 位置度 ⊙ 同轴度 ≡ 对称度	除另有注明 尺寸公差如下: 英寸 X XX XXX XXXX 毫米 ±.1 ±.02 ±.005 ±.0005 ±0.5 ±0.13 ±0.013 角度 ±.50 度 清理毛刺和尖棱 英寸 .003-.015 毫米 0.1-0.4 内圆角 英寸 .020 毫米 0.5 表面粗糙度 英制 125 米制 3.2 米制尺寸显示在[ ]	绘图: JLHESS	06-11-2009	<p>名称: OUTLINE</p> <p>图幅: C 图号: B2854</p> <p>比例: NONE 页号: 1</p>
16381811	B2848			批准: D.FOX	06-11-2009	
UL COMPONENT	CSA			第三角投影	图纸格式发布日期 11-11-2011 图纸格式版本 G	
FILE# CCN# FILE# GUIDE#	PENDING PENDING PENDING PENDING			机密: 本图纸及相关信息所有权归REGAL-BELOIT CORPORATION。 未经REGAL-BELOIT CORPORATION书面授权, 不得泄露、复制、传播或作其他用途。--版权所有		
CUSTOMER	DISTRIBUTION					

ASME Y14.5M 1994