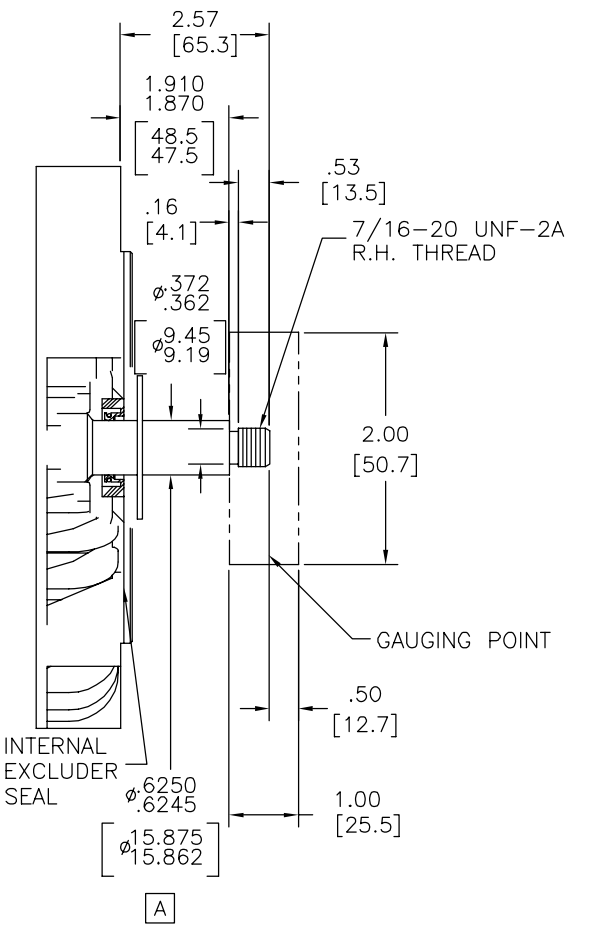
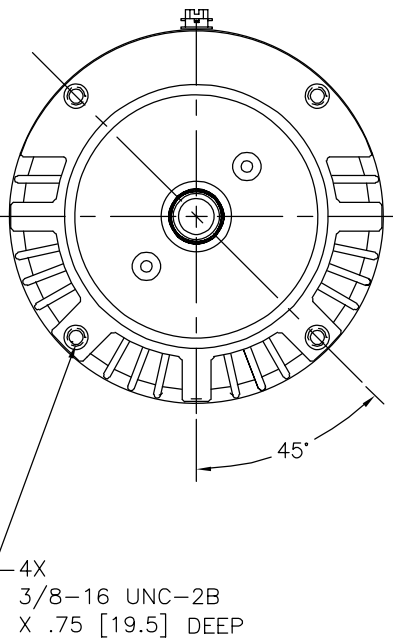
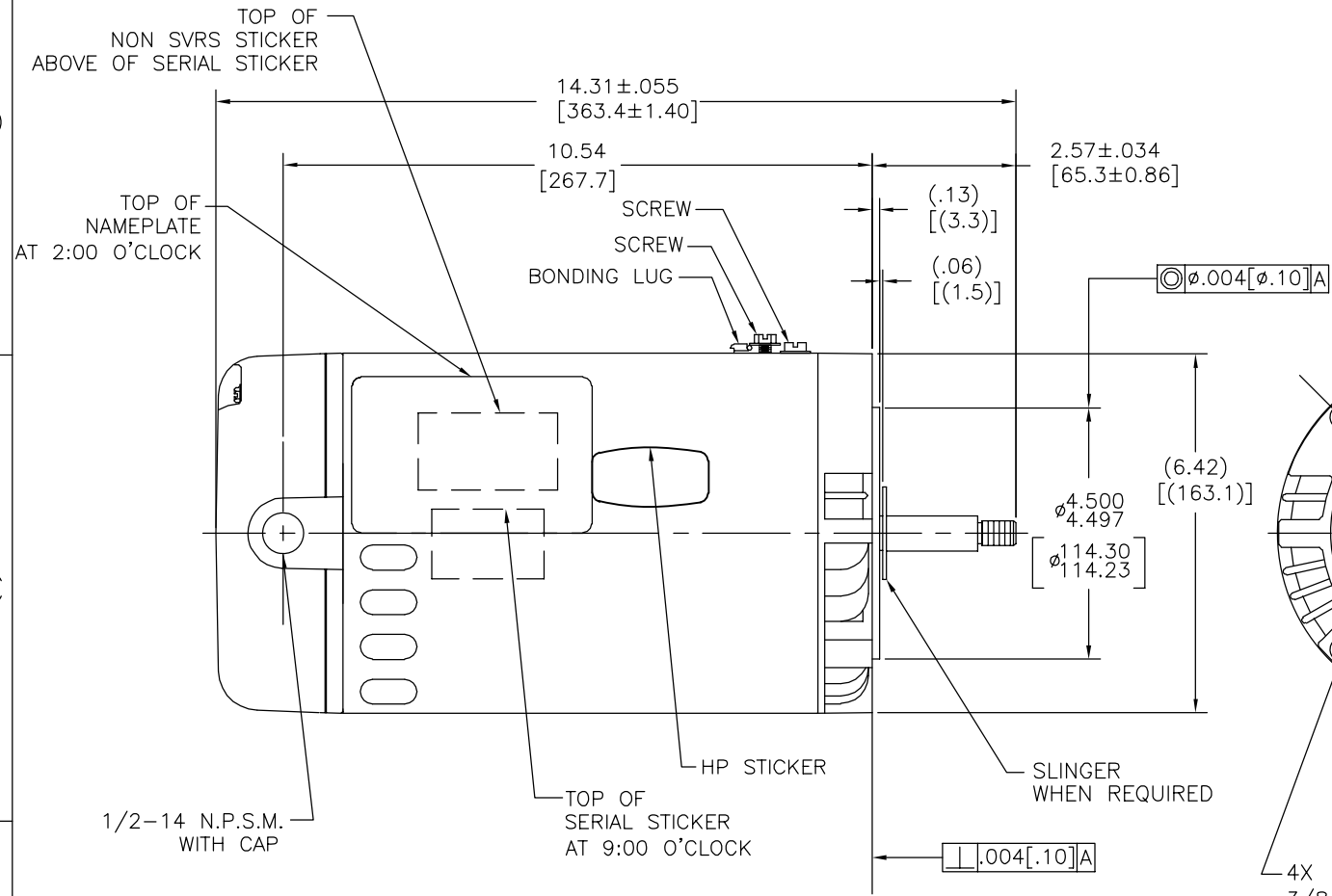


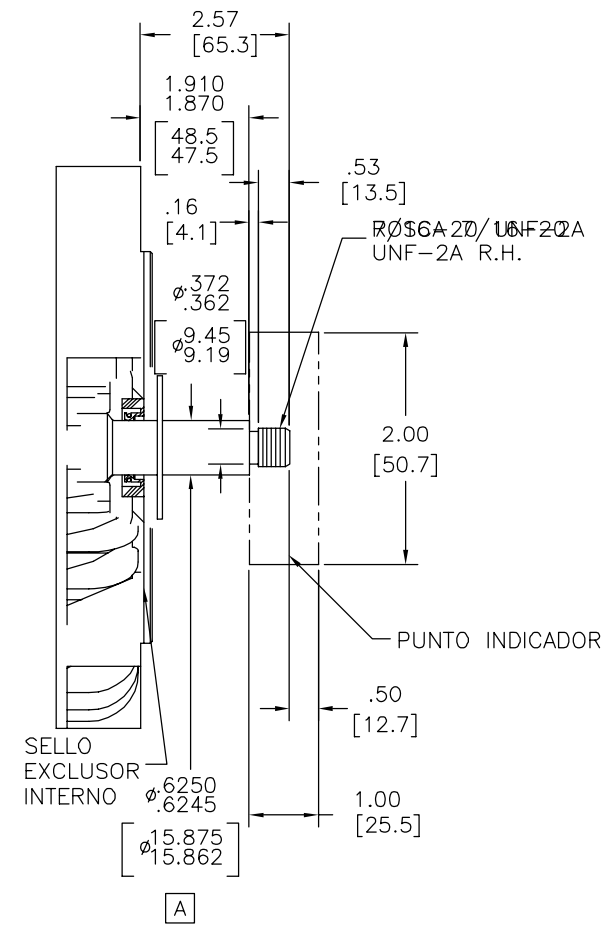
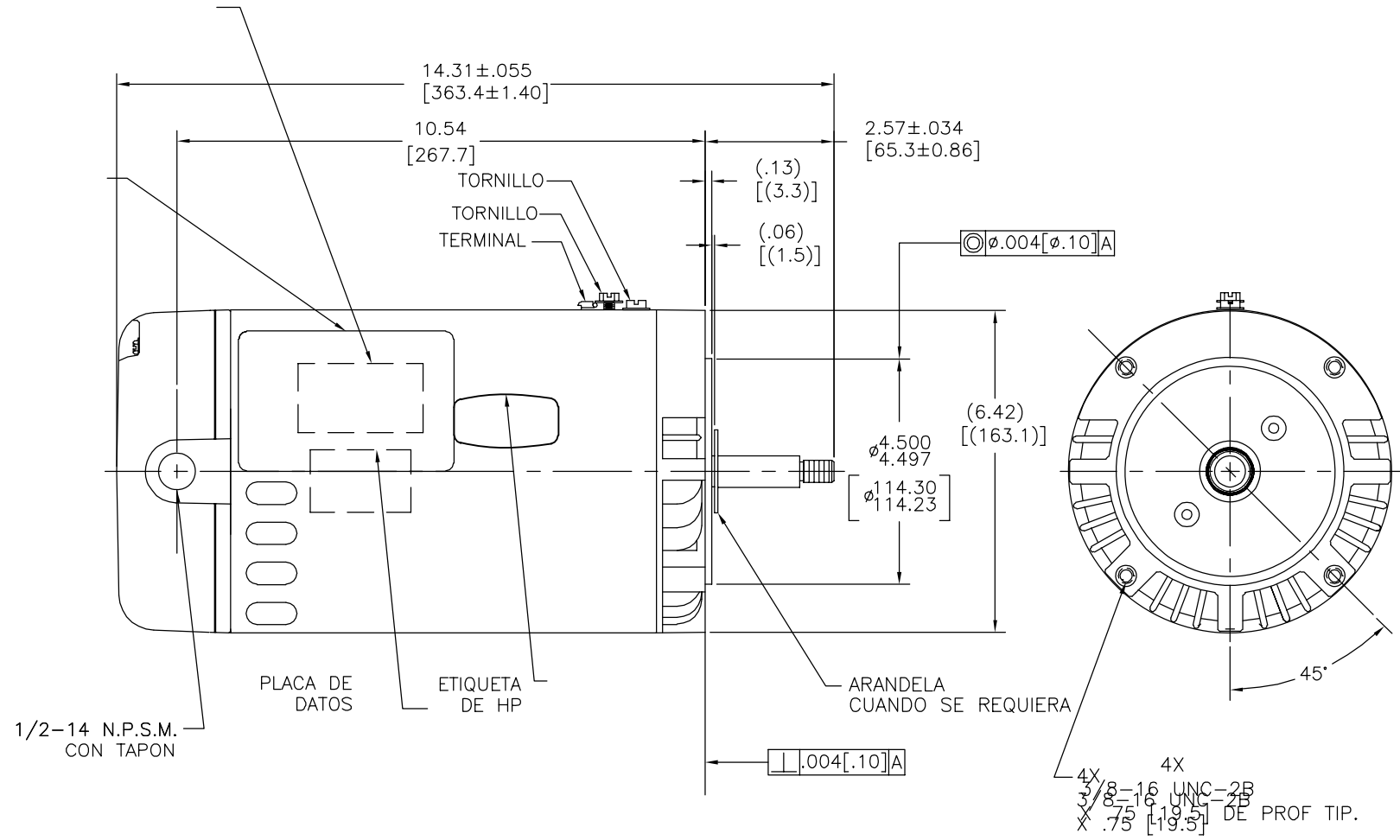
REV	ECO	REV BY	DATE	APPD	DATE
C	0025530	J.M.RAMIREZ	04-25-2012	R.RASCON	04-25-2012



NAMEPLATE DATA	EXTERNAL CONNECTION DIAGRAM	NOTES
MODEL: 184983 CUST PN: B230SE HP: 2.0 SF: 1.0 ROT: CCWPE RPM: 3450 TYPE: CX CODE: E FORM: FRAME: Y 56 J VOLTS: 230/115 AMPS: 9.2/18.4 MAX AMPS: SF AMPS: - PH: 1 HZ: 60 INS: B AMB: 50°C DUTY: CONT ENCLOSURE: ODP THERMALLY PROTECTED		1. SHAFT RUNOUT NOT TO EXCEED .002 [.05]. 2. FOR THREADED SHAFT EXT. MATING PARTS SHOULD BE RELIEVED ONE THREAD TO CLEAR FILLET. 3. FOR THREADED SHAFT EXT. ECCENTRICITY OF THREADED PORTION OF SHAFT IS HELD WITHIN .004 [.10] TOTAL GAGE READING WITH THE INDICATOR ON O.D. OF GROUND RING GAGE AS SHOWN. THE GAGE BEING STATIONARY WITH RESPECT TO THE ROTOR. 4. END PLAY NOT TO EXCEED .010 [.25] MEASURED WITH NO THRUST.

PERFORMANCE CURVE	APPROVED SAMPLE	GEOMETRIC CHARACTERISTICS & SYMBOLS ▽ FLATNESS - STRAIGHTNESS ∟ ANGULARITY ⊥ PERPENDICULARITY (SQUARENESS) // PARALLELISM ○ ROUNDNESS (CIRCULARITY) ∅ CYLINDRICITY △ PROFILE OF ANY SURFACE ∩ PROFILE OF ANY LINE ↗ RUNOUT ⊕ TRUE POSITION ⊙ CONCENTRICITY = SYMMETRY	UNLESS OTHERWISE SPECIFIED DIM. TOLERANCES ARE AS FOLLOWS: INCH X XX XXX XXXX ±.1 ±.02 ±.005 ±.0005 mm ±0.5 ±0.13 ±0.013 ANG. ±50 DEG REMOVE BURRS & BREAK SHARP EDGES: INCH .003-.015 mm 0.1-0.4 CORNER FILLETS TO: INCH .020 mm 0.5 MACHINE SURFACES: INCH 125 mm 3.2 METRIC DIMS. SHOWN IN [BRACKETS]	DR BY: PZ	09-08-2010	REGAL-BELOIT CORPORATION REGAL-BELOIT		
16345311	CSA			APPD: CZ	09-08-2010		DESCRIPTION	MODEL-CFHP-56FR OUTLINE
UL COMPONENT	FILE#	CCN#	FILE#	GUIDE#	THIRD ANGLE PROJECTION	EDS DATE 11-11-2011	SIZE C	DWG NO B230SE
E14663	XEWR2	LR4642	4211-01		CONFIDENTIAL: THIS DRAWING AND ITS INFORMATION ARE THE EXCLUSIVE AND CONFIDENTIAL PROPERTY OF REGAL-BELOIT CORPORATION AND ARE NOT TO BE DISCLOSED, DUPLICATED, DISTRIBUTED OR OTHERWISE USED WITHOUT THE WRITTEN CONSENT OF REGAL-BELOIT CORPORATION. -ALL RIGHTS RESERVED.	FORMAT REV G	SCALE NONE	SHEET 1

REVISION:	ECO	REVISADO POR:	FECHA:	APROBADO POR:	FECHA:
C	0025530	J.M.RAMIREZ	04-25-2012	R.RASCON	04-25-2012

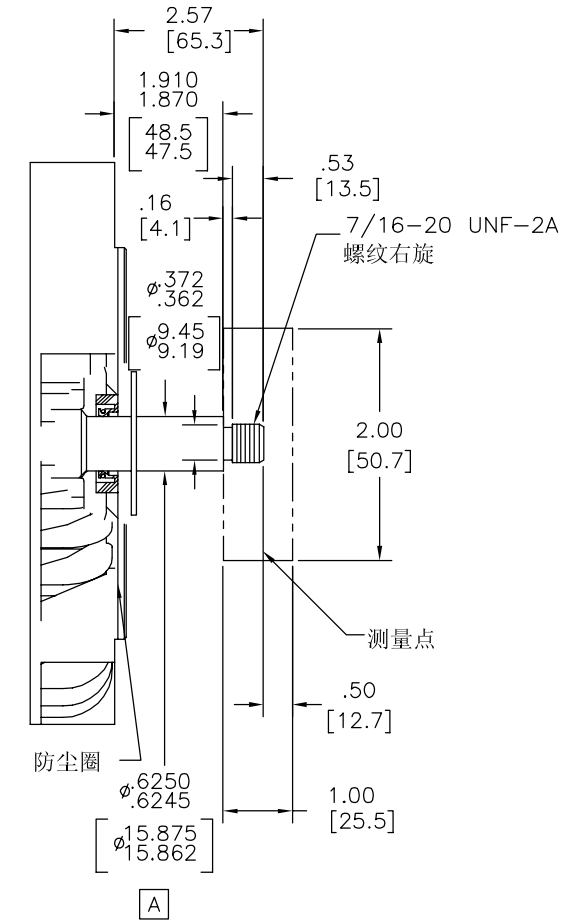
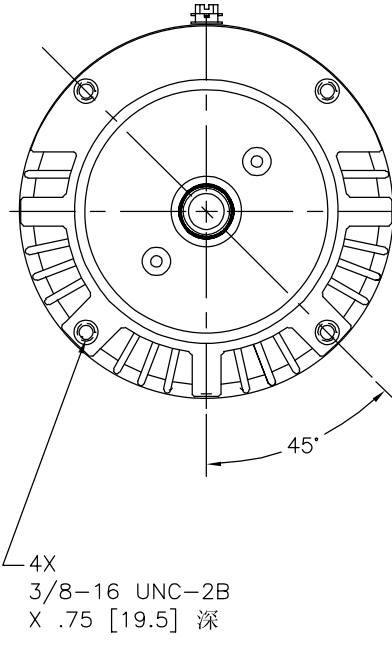
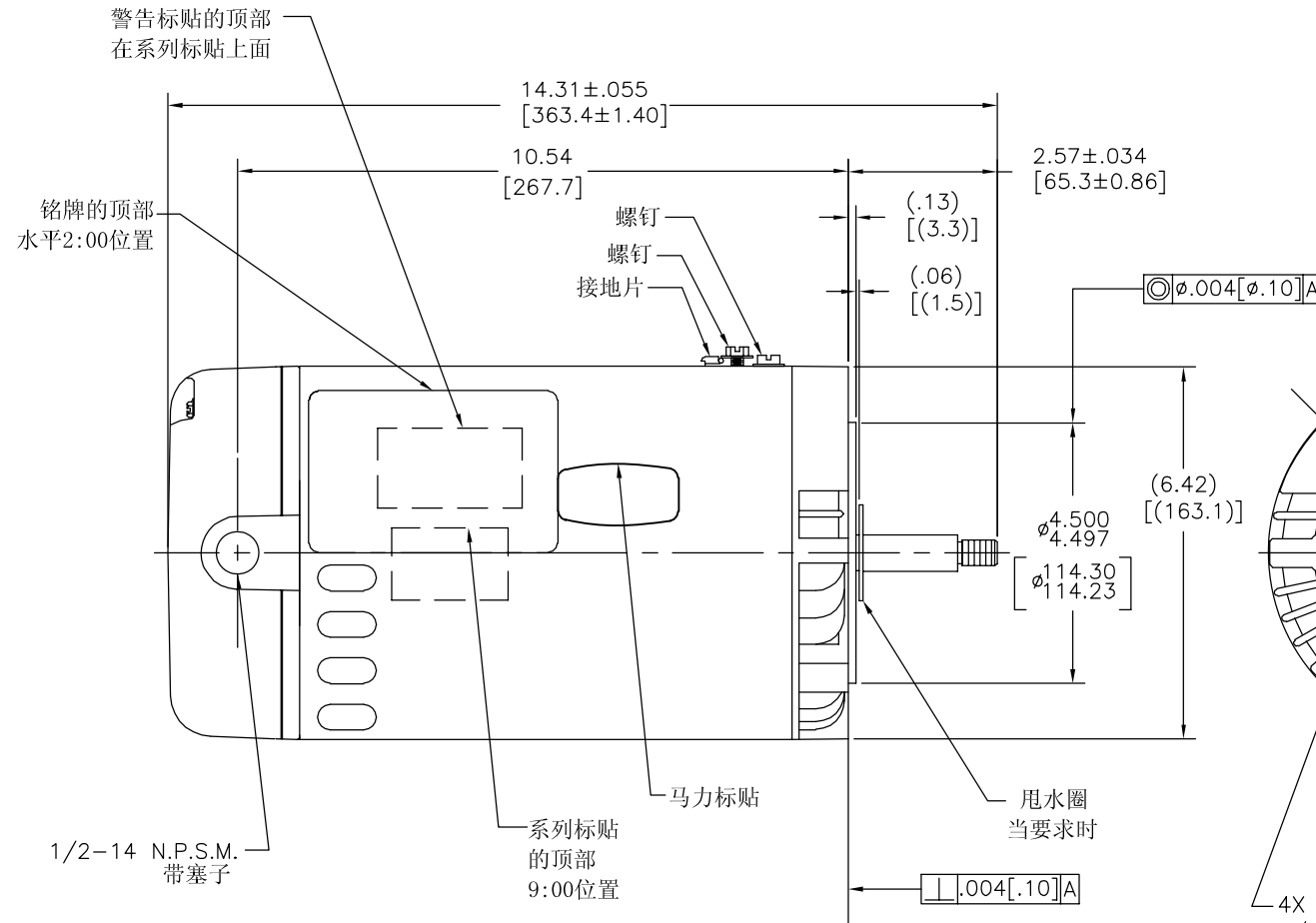


NAMEPLATE DATA	EXTERNAL CONNECTION DIAGRAM	NOTES
MODEL: 184983 CUST PN: B230SE HP: 2.0 SF: 1.0 ROT: CCWPE RPM: 3450 TYPE: CX FORM: CODE: E FRAME: Y 56 J VOLTS: 230/115 AMPS: 9.2/18.4 MAX AMPS: SF AMPS: - PH: 1 HZ: 60 INS: B AMB: 50°C DUTY: CONT ENCLOSURE: ODP THERMALLY PROTECTED	<p>DUAL VOLTAGE</p>	NOTAS: 1 DIAMETRO PILOTO ES CONCENTRICO CON LA LINEA DE CENTRO DE LA FLECHA DENTRO DE .004 [.10] L.T.I. 2 LA CARA DEL MONTAJE ES PERPENDICULAR A LA LINEA DE CENTRO DE LA FLECHA DENTRO DE .004 [.10] L.T.I. 3 EL OSCILAMIENTO DE LA FLECHA NO EXCEDERA DE .002 [.05] L.T.I. 4 PARA FLECHAS DE ROSCA EXTERNA LAS PARTES QUE SE ACOPLAN DEBEN SER LIBERADAS UNA ROSCA PARA LIBRAR EL FILO.

- 5 PARA EXT. DE FLECHA CON ROSCA, LA EXCENTRICIDAD DE LA PORCION ROSCADA DE LA FLECHA ES SOSTENIDA DENTRO DE .004 [.10] TOTAL. EL MEDIDOR CON EL INDICADOR SOBRE EL DIAM. EXT. INDICADOR DEL ANILLO DE TIERRA COMO SE MUESTRA. SIENDO EL MEDIDOR ESTACIONARIO CON RESPECTO AL ROTOR.
- 6 JUEGO AXIAL NO EXCEDERA DE .010 [.25] MEDIDO SIN EMPUJE.

PERFORMANCE CURVE	APPROVED SAMPLE	CARACTERISTICAS DE GEOMETRIA Y SIMBOLOS Z PLANICIDAD - RECTITUD / ANGULARIDAD ⊥ PERPENDICULARIDAD (A ESCUADRA) // PARALELISMO ○ REDONDEZ (CIRCULARIDAD) ∅ CILINDRICIDAD △ PERFIL DE CUALQUIER SUPERFICIE ∩ PERFIL DE CUALQUIER LINEA † VARIACION ⊕ POSICION REAL ⊙ CONCENTRICIDAD = SIMETRIA	DIBUJADO POR: PZ	09-08-2010	DESCRIPCION: MODEL-CFHP-56FR OUTLINE		
16345311	CSA		APROBADO POR: CZ	09-08-2010		TAMAÑO: C	NUMERO DE DIBUJO: B230SE
FILE#	CCN#	FILE#	GUIDE#	TERCER ANGULO DE PROYECCION	FECHA EDS: 11-11-2011	ESCALA: NONE	HOJA: 1
E14663	XEWR2	LR4642	4211-01	CONFIDENCIAL: ESTE DIBUJO Y SU INFORMACION SON PROPIEDAD DE USO EXCLUSIVO Y CONFIDENCIAL DE REGAL-BELOIT CORPORATION. Y NO DEBERAN SER REVELADOS, DUPLICADOS, DISTRIBUIDOS O USARSE DE OTRA MANERA SIN EL CONSENTIMIENTO ESCRITO DE REGAL-BELOIT CORPORATION. -TODOS LOS DERECHOS RESERVADOS.	REV. FORMATO: G		

版本	ECO	编制	日期	批准	日期
C	0025530	J.M.RAMIREZ	04-25-2012	R.RASCON	04-25-2012



NAMEPLATE DATA	EXTERNAL CONNECTION DIAGRAM	NOTES
MODEL: 184983 CUST PN: B230SE HP: 2.0 SF: 1.0 ROT: CCWPE RPM: 3450 TYPE: CX FORM: CODE: E FRAME: Y 56 J VOLTS: 230/115 AMPS: 9.2/18.4 MAX AMPS: SF AMPS: - PH: 1 HZ: 60 INS: B AMB: 50°C DUTY: CONT ENCLOSURE: ODP THERMALLY PROTECTED	<p>DUAL VOLTAGE</p>	1. 转轴跳动不超过.002[.05]. 2. 螺纹端面应能旋紧至与轴肩齐平处。 3. 使用量规测量轴螺纹同心度(如图所示)与轴的同轴度不超过.004[.10] 4. 在无外推力情况下, 轴窜不超过.010[.25]

PERFORMANCE CURVE	APPROVED SAMPLE	形位公差 平面度 直线度 倾斜度 垂直度 平行度 圆度 圆柱度 面轮廓度 线轮廓度 圆跳动 位置度 同轴度 对称度	除另有注明尺寸公差如下: 英寸 X XX XXX XXXX 毫米 ±.1 ±.02 ±.005 ±.0005 ±0.5 ±0.13 ±0.013 角度 ±.50 度 清理毛刺和尖棱 英寸 .003-.015 毫米 0.1-0.4 内圆角 英寸 .020 毫米 0.5 表面粗糙度 英制 125 米制 3.2 米制尺寸显示在 []	绘图: PZ 批准: CZ 第三角投影	09-08-2010 09-08-2010 11-11-2011 G	MODEL-CFHP-56FR OUTLINE 图幅 C 图号 B230SE 比例 NONE 页号 1
16345311	CSA			机密: 本图纸及相关信息所有权归REGAL-BELOIT CORPORATION. 未经REGAL-BELOIT CORPORATION书面授权, 不得泄露、复制、传播或作其他用途。--版权所有		