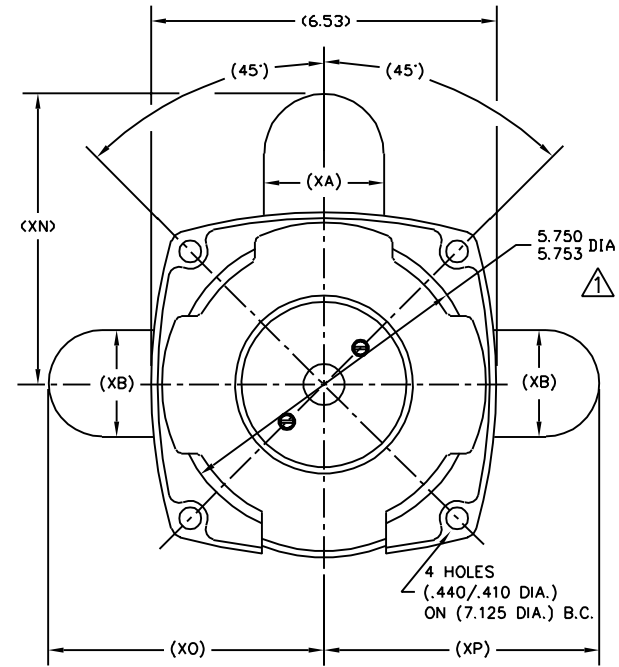
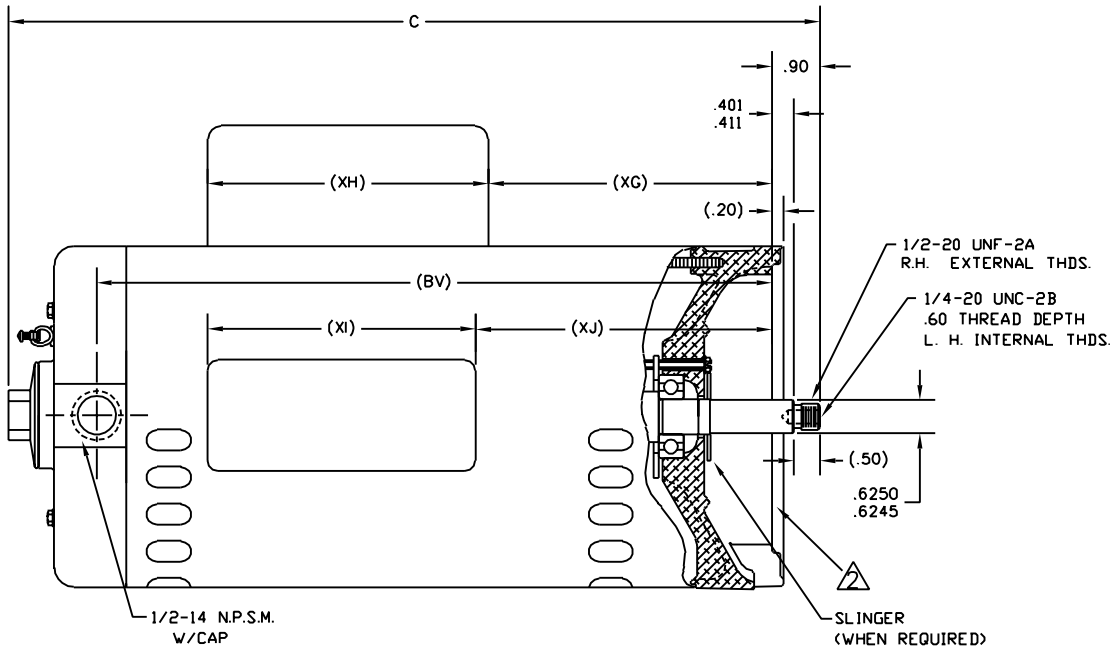


REV	DATE	PROJECT	DESCRIPTION	REV BY	APPD
F	10/16/2003	00131101	ADDED HEX CAP	margue	mguerr

GRP	TYPE	FRAME	C	XA	XB	XH	XG	XI	XJ	BV	XN	XO	XP
-01	CX	Y56Y	14.94	2.27	2.01	5.30	5.11	5.06	5.35	12.50	5.50	5.20	5.20
-02													
-03													

ALL DIMENSIONS SHOWN IN PARENTHESIS ARE REFERENCE DIMENSIONS. ALL OTHER DIMENSIONS ARE TOLERANCED PER THE FOLLOWING CHART UNLESS OTHERWISE SPECIFIED.

"C" DIM. = +/- .055
 SHAFT EXT. = +/- .034
 LEAD LENGTHS = +/- 1.00
 EXTENDED THRU-BOLTS = +/- .050



NOTES:

- ⚠️ PILOT DIAMETER IS CONCENTRIC WITH SHAFT CENTERLINE WITHIN .006 T.I.R.
- ⚠️ FACE OF MOUNTING FLANGE IS PERPENDICULAR TO SHAFT CENTERLINE WITHIN .004 T.I.R.
- 3 SHAFT RUNOUT NOT TO EXCEED .002 T.I.R.
- 4 FOR THREADED SHAFT EXT. MATING PARTS SHOULD BE RELIEVED ONE THREAD TO CLEAR FILLET

- 5 FOR THREADED SHAFT EXT. ECCENTRICITY OF THREADED PORTION OF SHAFT IS HELD WITHIN .004 TOTAL GAGE READING WITH THE INDICATOR ON O.D. OF GROUND RING GAGE AS SHOWN. THE GAGE BEING STATIONARY WITH RESPECT TO THE ROTOR.
- 6 END PLAY NOT TO EXCEED .010 MEASURED WITH NO THRUST

C-CODE:	UNLESS OTHERWISE SPECIFIED DIM ARE IN INCHES	DR BY:	A. O. SMITH	A DIVISION OF A. O. SMITH CORPORATION ELECTRICAL PRODUCTS COMPANY TYP CITY, OHIO
CLASS:	X = ± .1 XX = ± .02 XXX = ± .005 XXXX = ± .0005 ANG = ± .3	CK BY:	TITLE SQUARE FLANGENE BB OP/EN	
CONFIDENTIAL DRAWING AND ITS INFORMATION ARE THE EXCLUSIVE AND CONFIDENTIAL PROPERTY OF A. O. SMITH CORP. AND ARE NOT TO BE DISCLOSED, DUPLICATED, DISTRIBUTED OR OTHERWISE USED WITHOUT THE WRITTEN CONSENT OF A. O. SMITH CORP. - ALL RIGHTS RESERVED.		APPD:	SIZE C	DWG NO 185413
AUTOCAD FORM 3		ISS:	SCALE	REV F
		THIRD ANGLE PROJECTION	SHEET 1 OF 01	